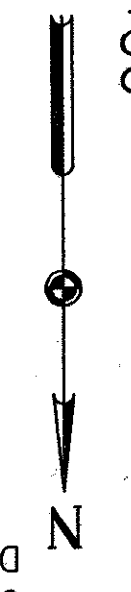
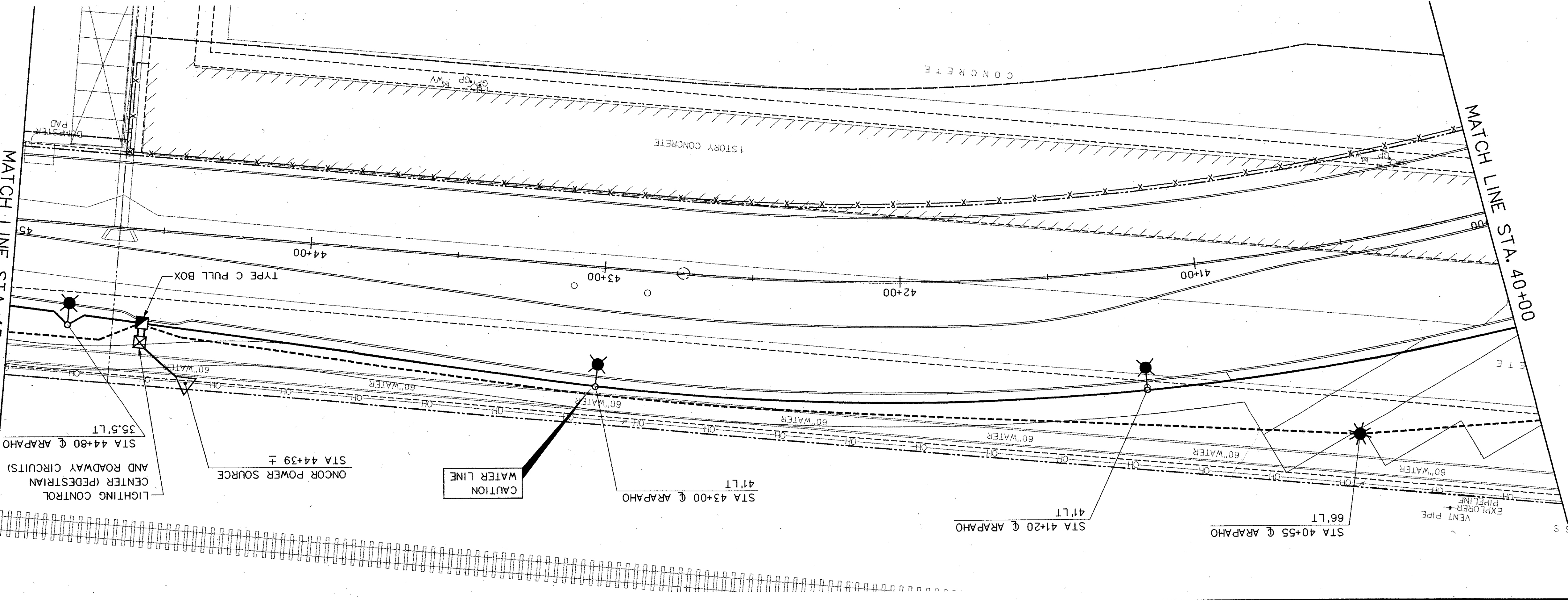


MATCH LINE STA. 45+00

STA. 50+00



3. SEE SHEET BR-68, LIGHT POLE ANCHORAGE DETAILS, FOR MOUNTING DETAIL.



MATCH LINE STA. 40+00

MATCH LINE STA. 45+00



SCALE IN FEET
 0 20 40 60 80

- NOTES:
- CONTRACTOR TO INSTALL POLE FOUNDATIONS, CONDUIT, CIRCUIT CONDUCTORS AND STREET LIGHTING STANDARDS.
 - SEE SPECIFICATIONS FOR TOWN OF ADDISON LIGHTING DETAILS.
 - SEE SHEET BR-68, LIGHT POLE ANCHORAGE DETAILS, FOR MOUNTING DETAIL.

- LEGEND:
- STREET LIGHTING STANDARD, SEE NOTE 1
 - PEDESTRIAN LIGHTING STANDARD
 - COMBINATION STREET LIGHT STANDARD AND PEDESTRIAN LUMINAIRE
 - CONDUIT, 2" SCH 40 PVC W/2#6, 1#6 GND (ROADWAY CIRCUIT)
 - CONDUIT, 2" SCH 40 PVC W/2#6, 1#6 GND (PEDESTRIAN CIRCUIT)
 - GROUND MOUNTED PULLBOX, TYPE A
 - POWER SOURCE
 - LIGHTING CONTROL CENTER

VOID