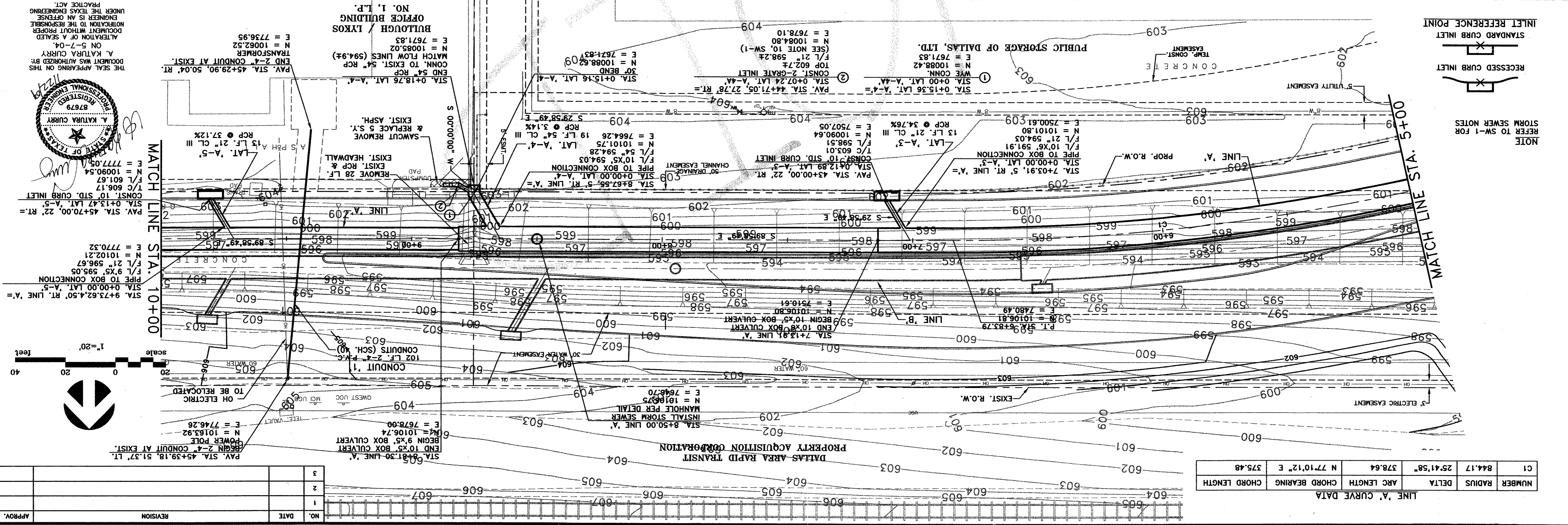


NUMBER	RADIUS	DELTA	ARC LENGTH	CHORD BEARING	CHORD LENGTH
C1	844.17	25°41'58"	378.64	N 77°10'12" E	375.48

LINE 'A' CURVE DATA

NO.	DATE	REVISION	APPROV.
3			
2			
1			

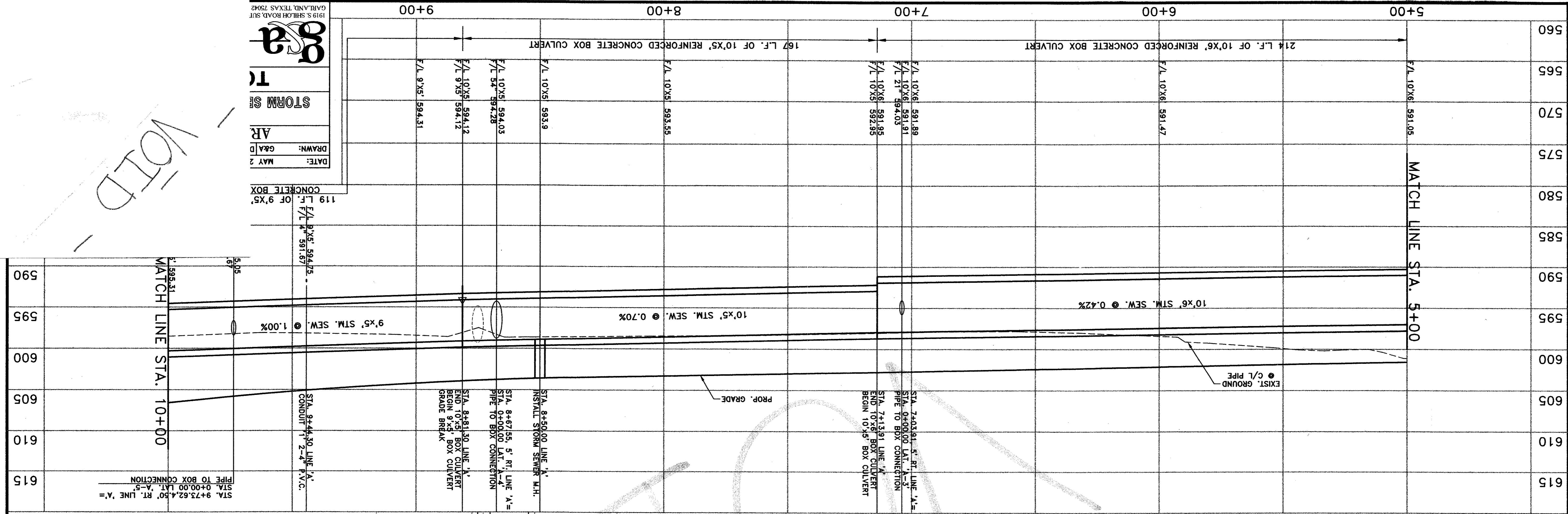


NOTE
REFER TO SW-1 FOR
STORM SEWER NOTES

RECESSED CURB INLET

STANDARD CURB INLET

INLET REFERENCE POINT



DATE: MAY 2
DRAWN: G&A/D

STORM SEWER

CONCRETE BOX

119 L.F. OF 9'X5'
F/L 9'X5' 594.75
F/L 9'X5' 591.67

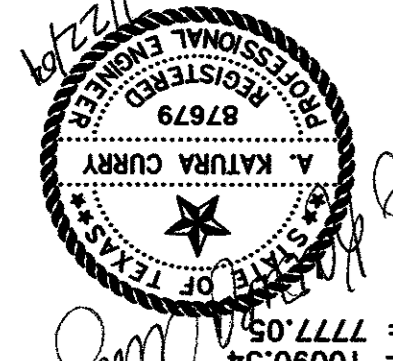
167 L.F. OF 10'X5' REINFORCED CONCRETE BOX CULVERT
F/L 10'X5' 593.55
F/L 10'X5' 594.03
F/L 10'X5' 594.28
F/L 10'X5' 594.12
F/L 9'X5' 594.31

214 L.F. OF 10'X6' REINFORCED CONCRETE BOX CULVERT
F/L 10'X6' 591.47
F/L 10'X6' 591.89
F/L 10'X6' 591.91
F/L 21' 594.03
F/L 10'X6' 591.95
F/L 10'X5' 592.95

5+00 **6+00** **7+00** **8+00** **9+00**

560 **565** **570** **575** **580** **585** **590** **595** **600** **605** **610** **615**

MATCH LINE STA. 5+00 **MATCH LINE STA. 10+00**



THE SEAL APPEARING ON THIS DOCUMENT WAS AUTHORIZED BY A. KATURRA CURRY, TRANSFORMER
ALTERNATION OF A SEALED DOCUMENT WITHOUT PROPER NOTIFICATION TO THE RESPONSIBLE ENGINEER IS AN OFFENSE UNDER THE TEXAS ENGINEERING PRACTICE ACT.

VOID