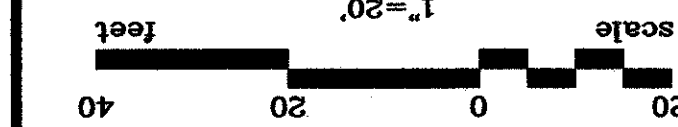


NO.	DATE	REVISION
3	06/28/04	REVISED PER G & A
2	06/28/04	REVISED PER ADDENDA
1		



NOTE
REFER TO SW-1 FOR
STORM SEWER NOTES

STA. 14+88.78 LINE 'A' =
STA. -0+05.19 LAT. 'A'-5A'
PIPE TO BOX CONNECTION
CONN. TO TOP OF 9"x5" B.C.

STA. 14+94.66
P.I. STA. 14+94.66
N = 10101.62
E = 8291.20

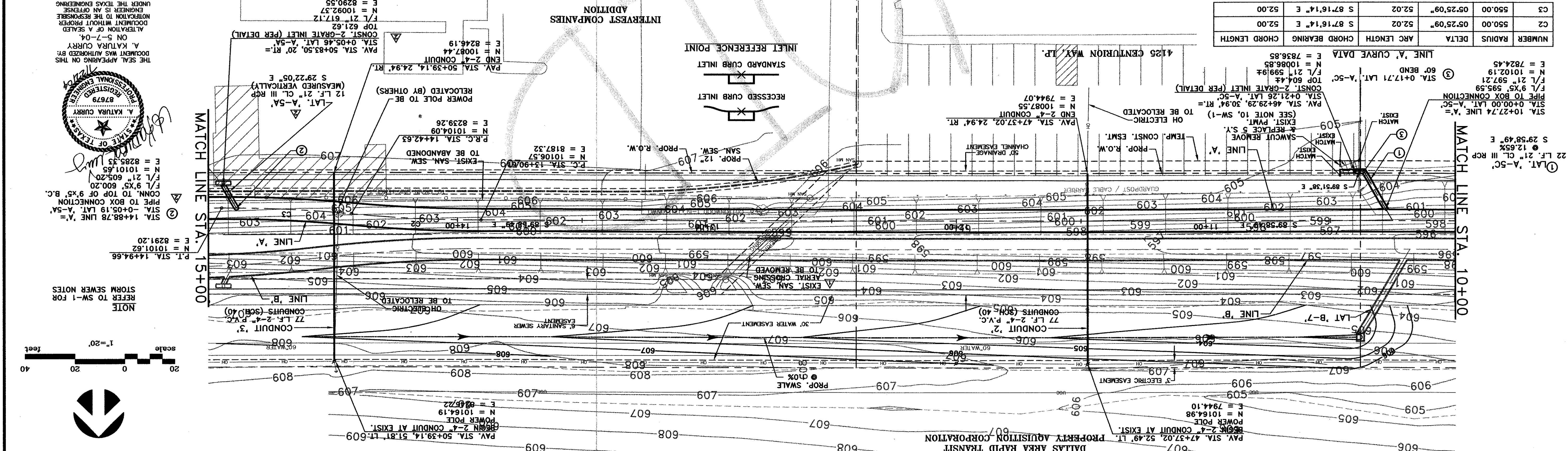
STA. 14+88.78 LINE 'A' =
STA. -0+05.19 LAT. 'A'-5A'
PIPE TO BOX CONNECTION
CONN. TO TOP OF 9"x5" B.C.

F/L 9"x5" 595.59
N = 10101.65
E = 8285.45

STA. 14+88.78 LINE 'A' =
STA. -0+05.19 LAT. 'A'-5A'
PIPE TO BOX CONNECTION
CONN. TO TOP OF 9"x5" B.C.

STA. 14+88.78 LINE 'A' =
STA. -0+05.19 LAT. 'A'-5A'
PIPE TO BOX CONNECTION
CONN. TO TOP OF 9"x5" B.C.

STA. 14+88.78 LINE 'A' =
STA. -0+05.19 LAT. 'A'-5A'
PIPE TO BOX CONNECTION
CONN. TO TOP OF 9"x5" B.C.



NUMBER	RADIUS	DELTA	ARC LENGTH	CHORD BEARING	CHORD LENGTH
C2	550.00	05°25'09"	52.02	S 87°16'14" E	52.00
C3	550.00	05°25'09"	52.02	S 87°16'14" E	52.00

LINE 'A' CURVE DATA
E = 7838.85
N = 10088.85
F/L 21" 599.94
TOP 604.44
P.I. STA. 0+17.71 LAT. 'A'-5C'
CONST. 2-GRATE INLET (PER DETAIL)

PAV. STA. 46+29.29, 30.94' RT. =
OH ELECTRIC
TO BE RELOCATED
TEMP. CONST. ESMT.
PROP. R.O.W.

PAV. STA. 47+37.02, 24.94' RT.
END 2-4" CONDUIT
N = 10087.55
E = 7944.07

PAV. STA. 50+39.14, 24.94' RT.
END 2-4" CONDUIT
N = 10087.44
E = 8246.19

P.C. STA. 13+90.00
N = 10106.57
E = 8187.32

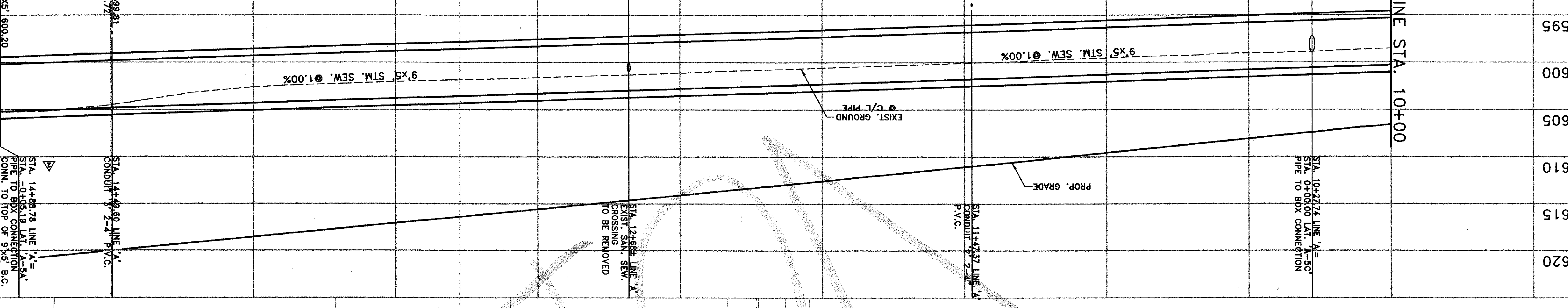
P.R.C. STA. 14+42.63
N = 10104.09
E = 8239.26

POWER POLE TO BE
RELOCATED (BY OTHERS)

12 L.F. 21" CL III RCP
LAT. 'A'-5A'
S 29°22'05" E

CONST. 2-GRATE INLET (PER DETAIL)

TOP 621.62
N = 10092.37
E = 8290.55



STATION	ELEVATION	PIPE TYPE
10+00	595.51	F/L 9"x5" 595.51
11+00	596.31	F/L 9"x5" 596.31
12+00	597.31	F/L 9"x5" 597.31
13+00	598.31	F/L 9"x5" 598.31
14+00	599.31	F/L 9"x5" 599.31

DATE: MAY 20
DRAWN: G&A DE
AREA
TO
STORM SE
1919 S. SHILOH ROAD, SUITE 75042 GARLAND, TEXAS 75042

VOID