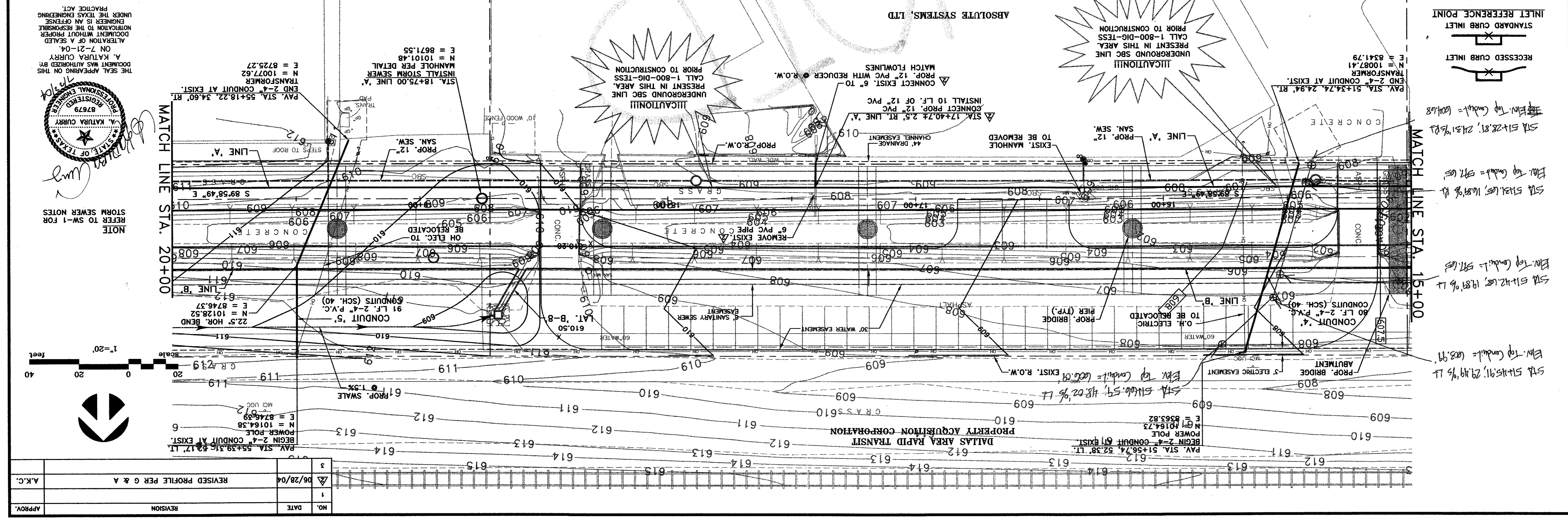


DATE: MAY 200  
 DRAWN: G&A/DES  
 ARAJ  
 STORM SEW  
 TOI

1919 S. SHILOH ROAD, SUITE 31  
 GARLAND, TEXAS 75042

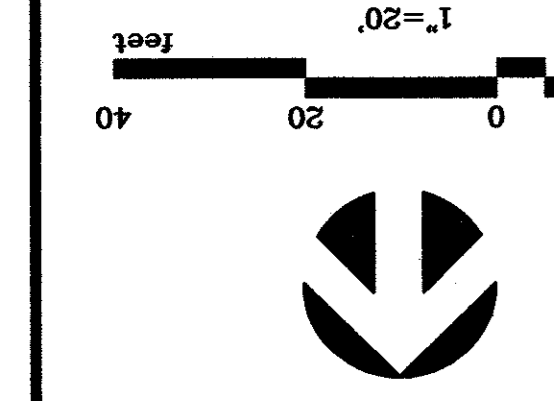
MATCH LINE STA. 20+00  
 9\"/>

MATCH LINE STA. 15+00



MATCH LINE STA. 20+00

MATCH LINE STA. 15+00



NO.	DATE	REVISION
1	06/28/04	REVISED PROFILE PER G & A
3		

APPROV. \_\_\_\_\_  
 A.K.C.

NOTE REFER TO SW-1 FOR STORM SEWER NOTES

STATE OF TEXAS  
 PROFESSIONAL ENGINEER  
 REG. NO. 87679  
 A. KATURA CURRY

THE SEAL APPEARING ON THIS DOCUMENT WAS AUTHORIZED BY A. KATURA CURRY ON 7-21-04. ALTERATION OF A SEALED DOCUMENT WITHOUT PROPER NOTIFICATION TO THE RESPONSIBLE ENGINEER IS AN OFFENSE UNDER THE TEXAS ENGINEERING PRACTICE ACT.

STANDARD CURB INLET  
 RECESSED CURB INLET

STA 51+28.81, 24.31% LT  
 Elev. top Conduit = 604.68

STA 51+12.81, 16.87% RT  
 Elev. top Conduit = 591.65

STA 51+12.81, 19.87% LT  
 Elev. top Conduit = 591.65

STA 51+15.91, 29.19% LT  
 Elev. top Conduit = 602.99

CAUTION!!!  
 UNDERGROUND SBC LINE  
 PRESENT IN THIS AREA.  
 CALL 1-800-DIG-TESS  
 PRIOR TO CONSTRUCTION

CAUTION!!!  
 UNDERGROUND SBC LINE  
 PRESENT IN THIS AREA.  
 CALL 1-800-DIG-TESS  
 PRIOR TO CONSTRUCTION

CAUTION!!!  
 UNDERGROUND SBC LINE  
 PRESENT IN THIS AREA.  
 CALL 1-800-DIG-TESS  
 PRIOR TO CONSTRUCTION

END 2-4" CONDUIT AT EXIST. TRANSFORMER  
 N = 10087.41  
 E = 8341.79

END 2-4" CONDUIT AT EXIST. TRANSFORMER  
 N = 10077.62  
 E = 8725.27

INSTALL STORM SEWER MANHOLE PER DETAIL  
 N = 10101.48  
 E = 8671.55

BEGIN 2-4" CONDUIT AT EXIST. POWER POLE  
 N = 10164.38  
 E = 8746.37

BEGIN 2-4" CONDUIT AT EXIST. POWER POLE  
 N = 10164.73  
 E = 8563.82

22.5" HOR. BEND  
 N = 10128.52  
 E = 8746.37

O.H. ELECTRIC  
 TO BE RELOCATED

STEPS TO ROOF  
 LINE 'A'

PAV. STA. 55+18.22, 34.60' RT  
 END 2-4" CONDUIT AT EXIST.

PAV. STA. 51+34.74, 24.94' RT  
 END 2-4" CONDUIT AT EXIST. TRANSFORMER

CONCRETE

CONCRETE

CONCRETE

CONCRETE

CONCRETE

CONCRETE

CONCRETE

CONCRETE