
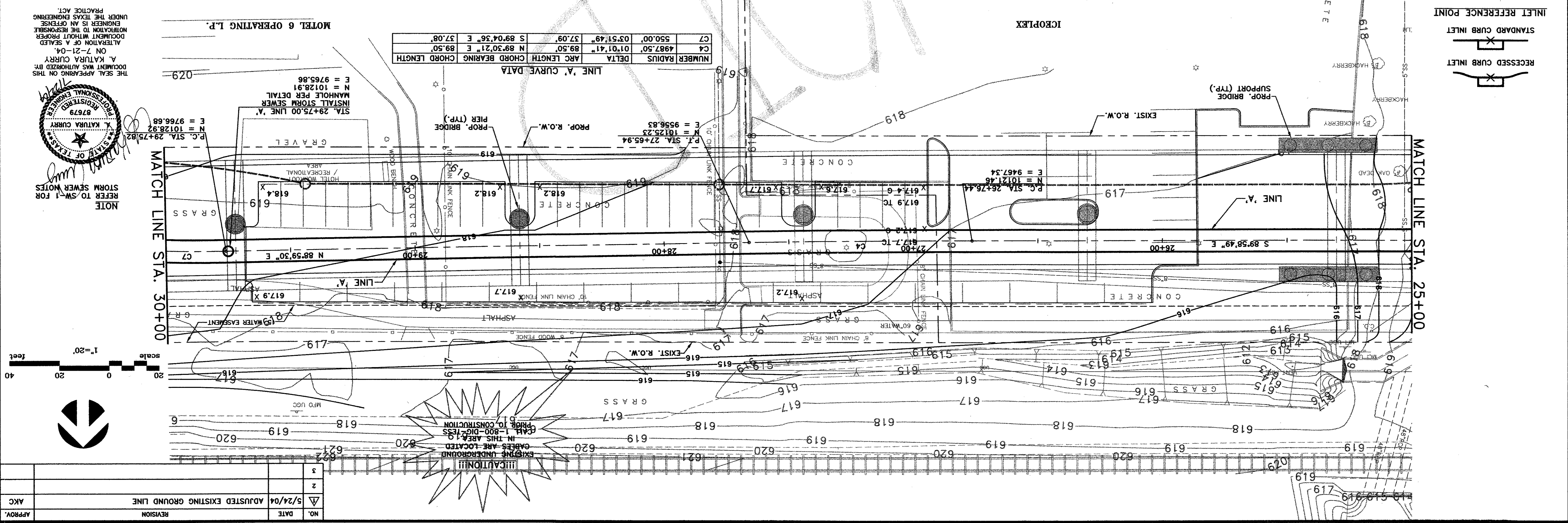
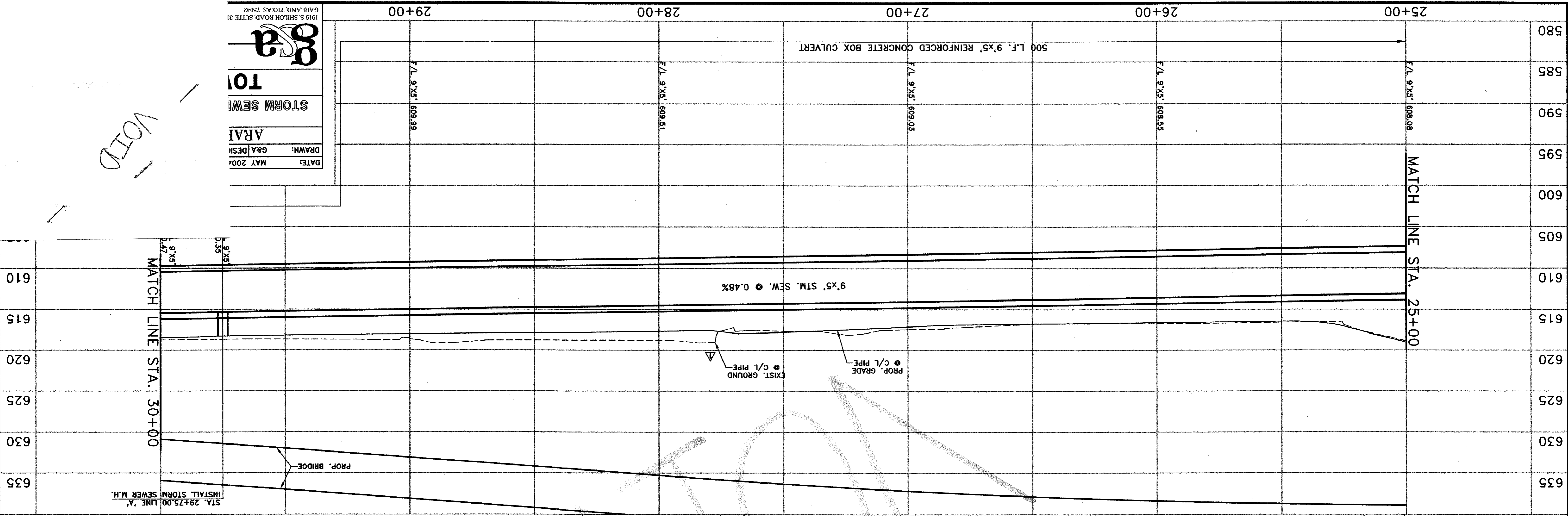


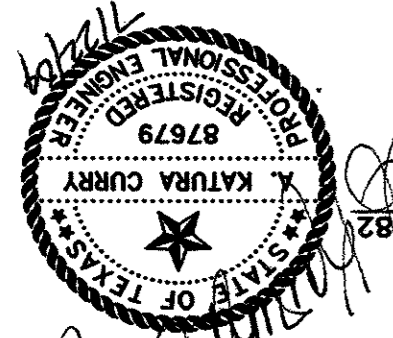
DATE: MAY 2004
 DRAWN: G&A DESI
 ARAI
 STORM SEWER
 TO


1919 S. SHILOH ROAD SUITE 81
 GARLAND, TEXAS 75042

VOID



NOTE
 REFER TO SW-1 FOR
 STORM SEWER NOTES



THE SEAL APPEARING ON THIS DOCUMENT WAS AUTHORED BY: A. KATURA CURRY, ON 7-21-04. ALTERATION OF A SEALED DOCUMENT WITHOUT PROPER NOTIFICATION TO THE RESPONSIBLE ENGINEER IS AN OFFENSE UNDER THE TEXAS ENGINEERING PRACTICE ACT.

NO.	DATE	REVISION
3		
2	5/24/04	ADJUSTED EXISTING GROUND LINE
1		

APPROV. AKC