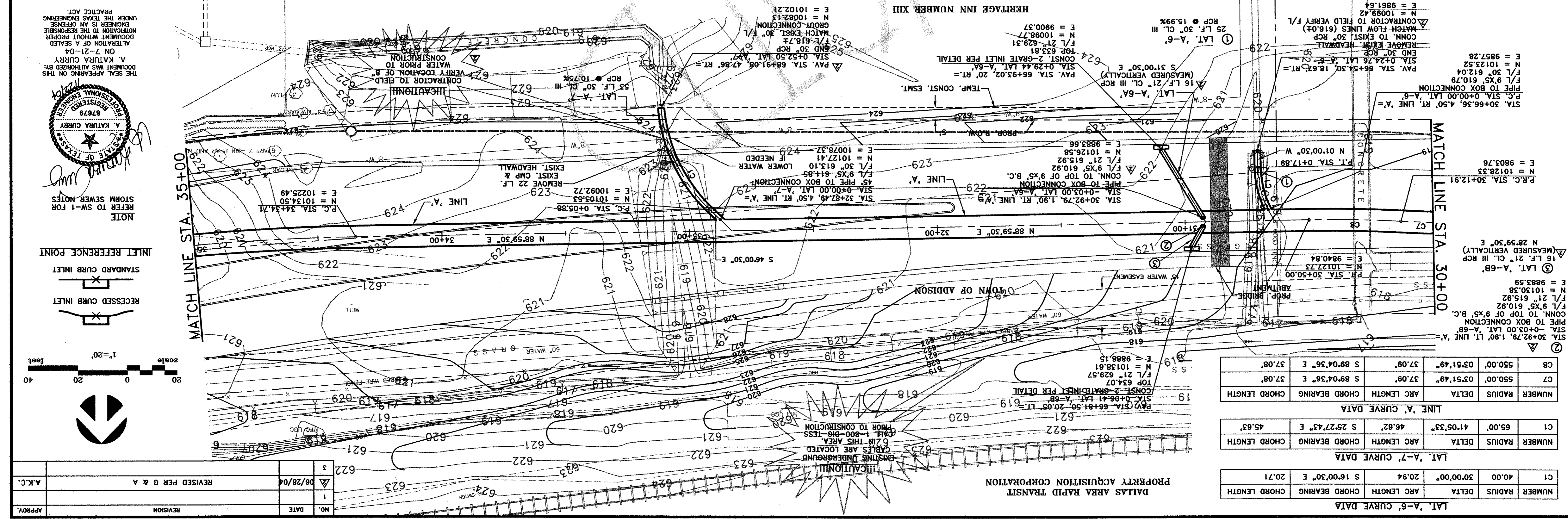
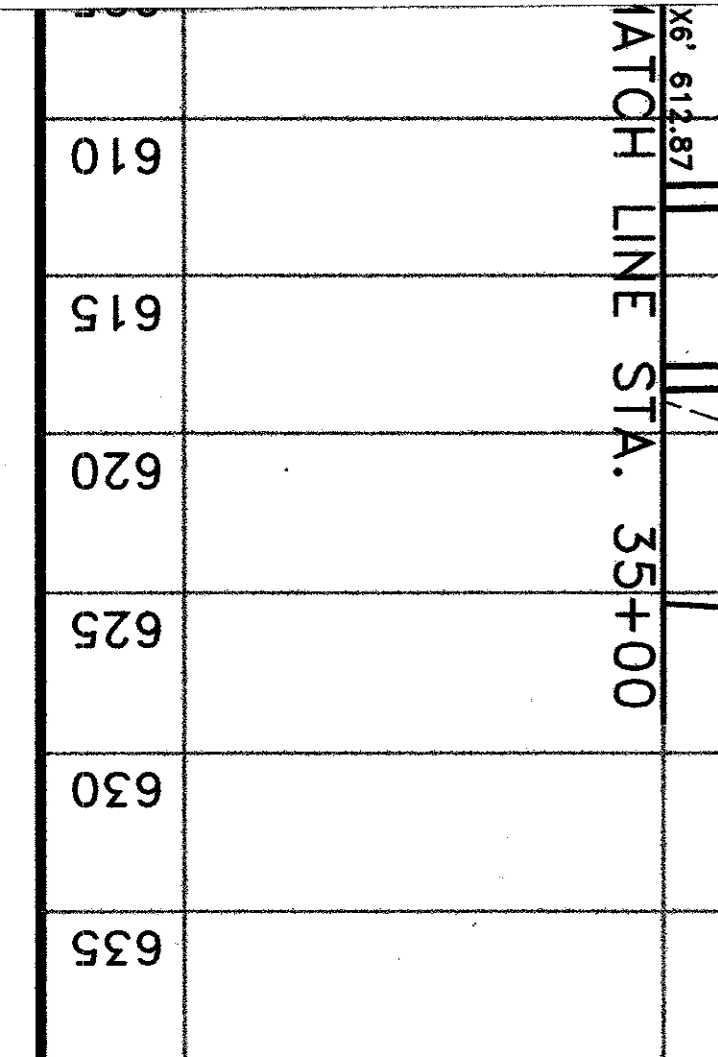
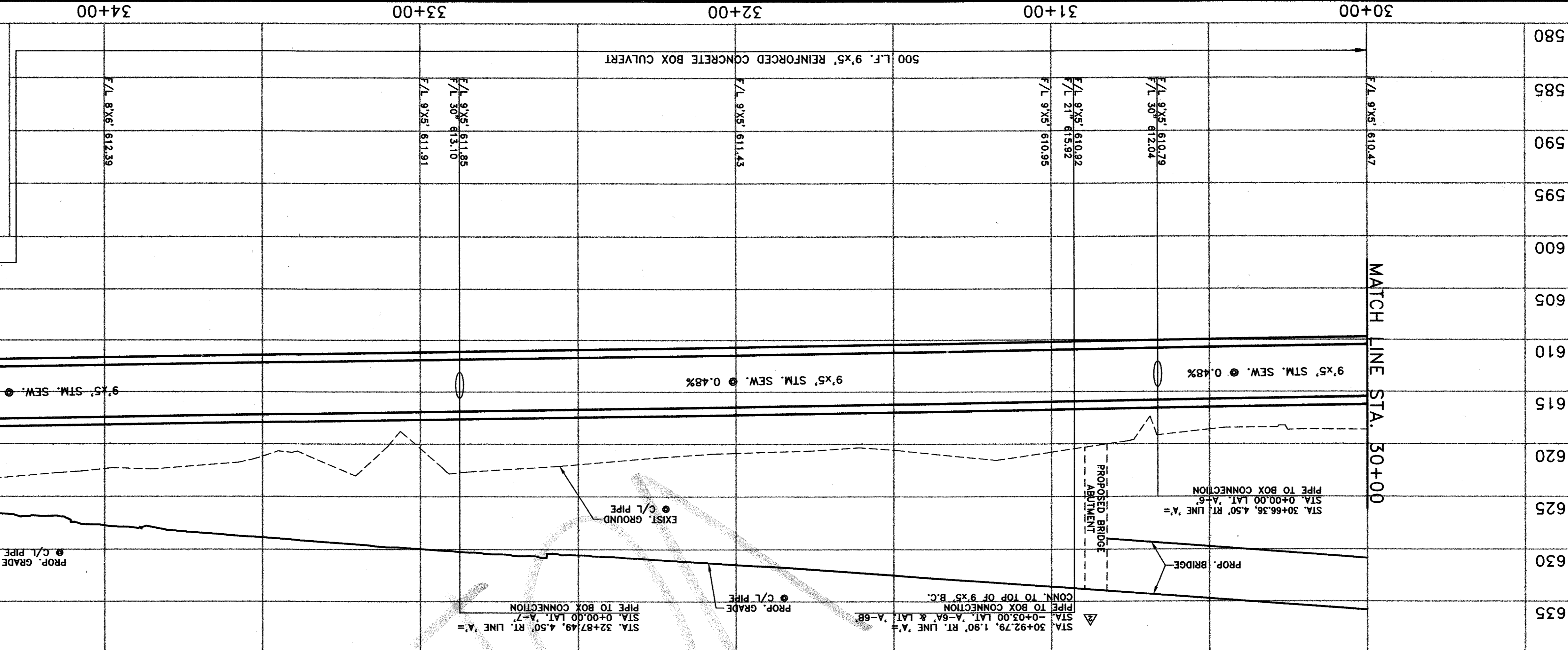


DATE: MAY 2004  
 DRAWN: G&A DESIGN  
 ARAP  
 STORM SEWE  
 TOI

1919 S. SHILOH ROAD, SUITE 311  
 GARLAND, TEXAS 75042



**LAT. 'A-6' CURVE DATA**

NUMBER	RADIUS	DELTA	ARC LENGTH	CHORD BEARING	CHORD LENGTH
C1	40.00	30°00'00"	20.94	S 16°00'30" E	20.71

**LAT. 'A-7' CURVE DATA**

NUMBER	RADIUS	DELTA	ARC LENGTH	CHORD BEARING	CHORD LENGTH
C1	65.00'	41°05'33"	46.62'	S 25°27'43" E	45.63'

**LINE 'A' CURVE DATA**

NUMBER	RADIUS	DELTA	ARC LENGTH	CHORD BEARING	CHORD LENGTH
C7	550.00'	03°51'49"	37.06'	S 89°04'36" E	37.08'
C8	550.00'	03°51'49"	37.09'	S 89°04'36" E	37.08'

NOTE  
 REFER TO SW-1 FOR  
 STORM SEWER NOTES

THE SEAL APPEARING ON THIS DOCUMENT WAS AUTHORIZED BY A. KATURRA CURRY ON 7-21-04 ALTERATION OF A SEALED DOCUMENT WITHOUT PROPER NOTIFICATION TO THE RESPONSIBLE ENGINEER IS AN OFFENSE UNDER THE TEXAS ENGINEERING PRACTICE ACT.

INLET REFERENCE POINT

scale 1"=20'

40 20 0 20

feet

NO.	DATE	REVISION
1	06/28/04	REVISED PER G & A
3		

APPROV. A.K.C.