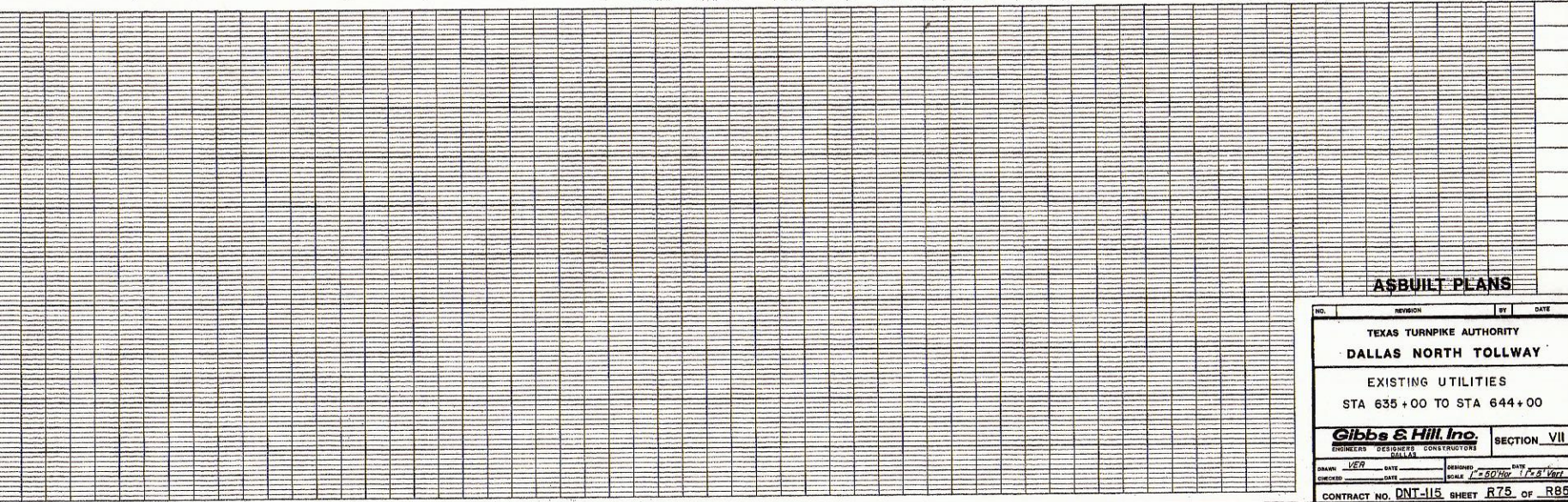
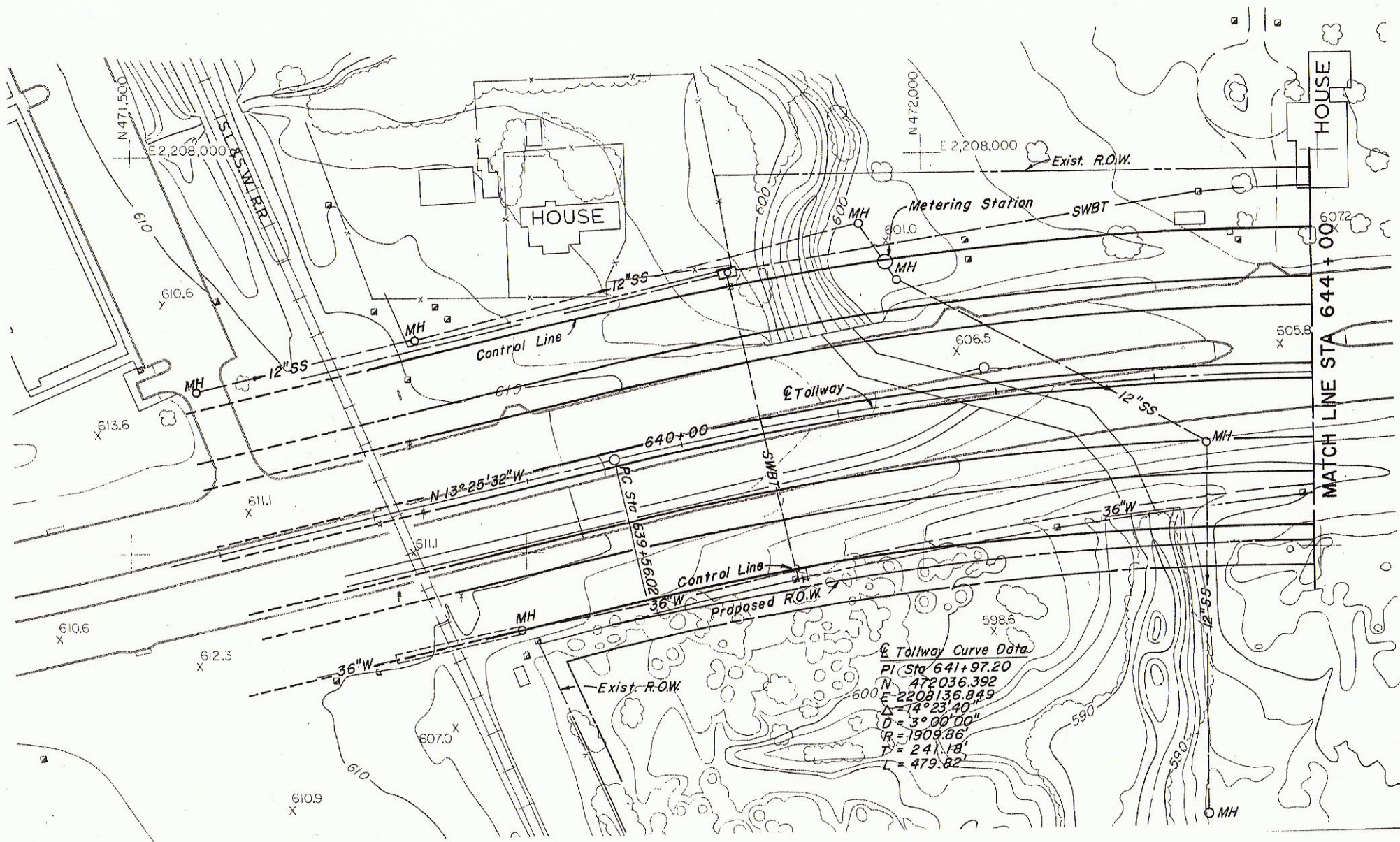


NOTE  
 The information shown on this drawing concerning type and location of underground utilities is not guaranteed to be accurate or all-inclusive. The Contractor is responsible for making his own determinations as to type and location of underground utilities as may be necessary to avoid damage thereto. The Contractor shall verify location of underground pipe lines, conduits, and structures by contacting owners of underground utilities and by prospecting in advance of excavation operations.



**A\$BUILT PLANS**

NO.	REVISION	BY	DATE
<b>TEXAS TURNPIKE AUTHORITY</b> <b>DALLAS NORTH TOLLWAY</b>			
<b>EXISTING UTILITIES</b> <b>STA 635+00 TO STA 644+00</b>			
<b>Gibbs &amp; Hill, Inc.</b> ENGINEERS DESIGNERS CONSTRUCTORS DALLAS			<b>SECTION VII</b>
DRAWN	VER	DATE	DESIGNED
CHECKED	DATE	SCALE	DATE
SCALE = 1" = 60' HOR 1" = 8' VERT			
CONTRACT NO. DNT-115 SHEET R75 OF R85			



Tollway Curve Data  
 PI STA 641+97.20  
 N = 472036.392  
 E = 2208136.849  
 $\Delta = 74^{\circ}23'40''$   
 $D = 3^{\circ}00'00''$   
 $R = 1909.86'$   
 $T = 241.18'$   
 $L = 479.82'$

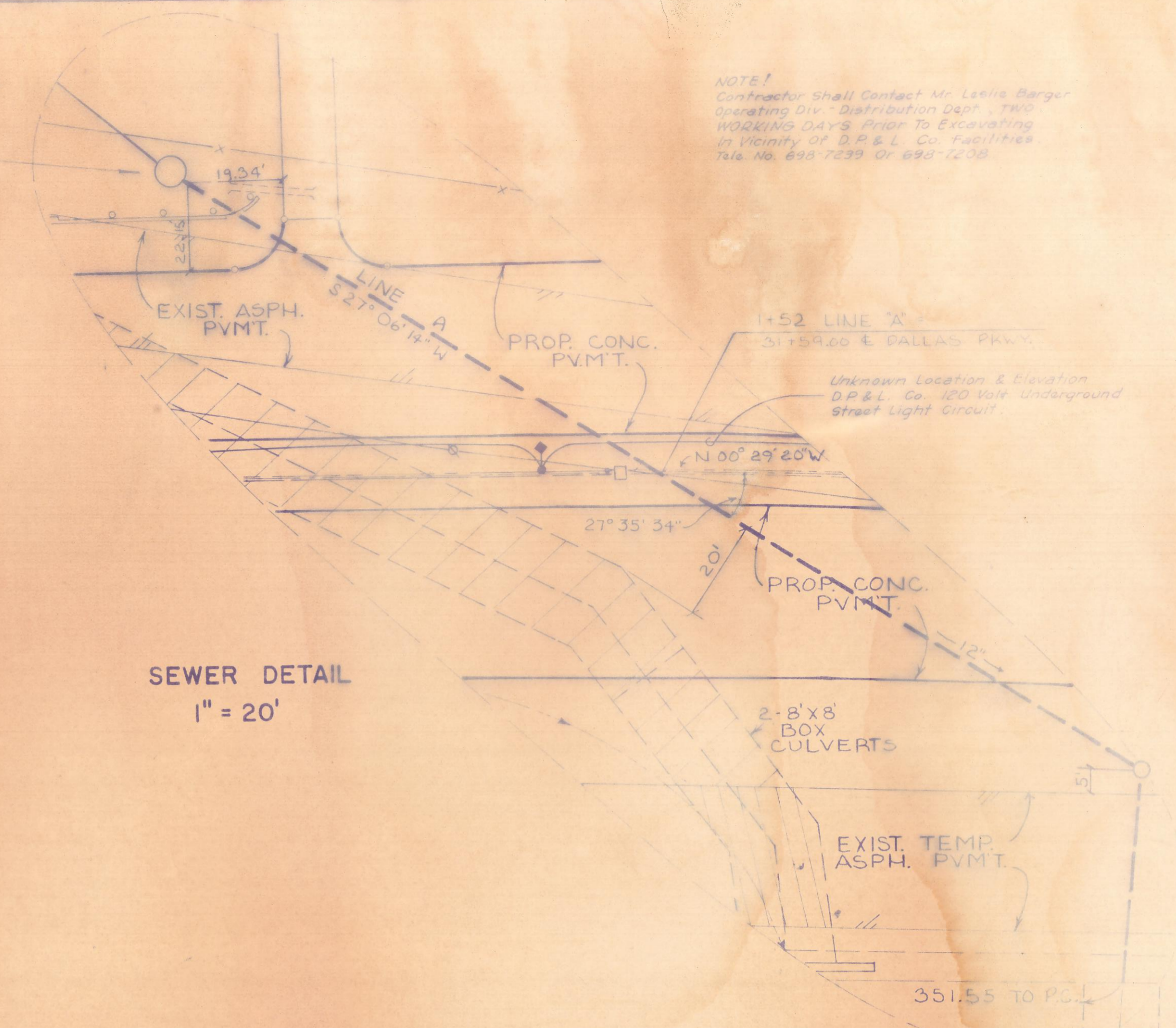
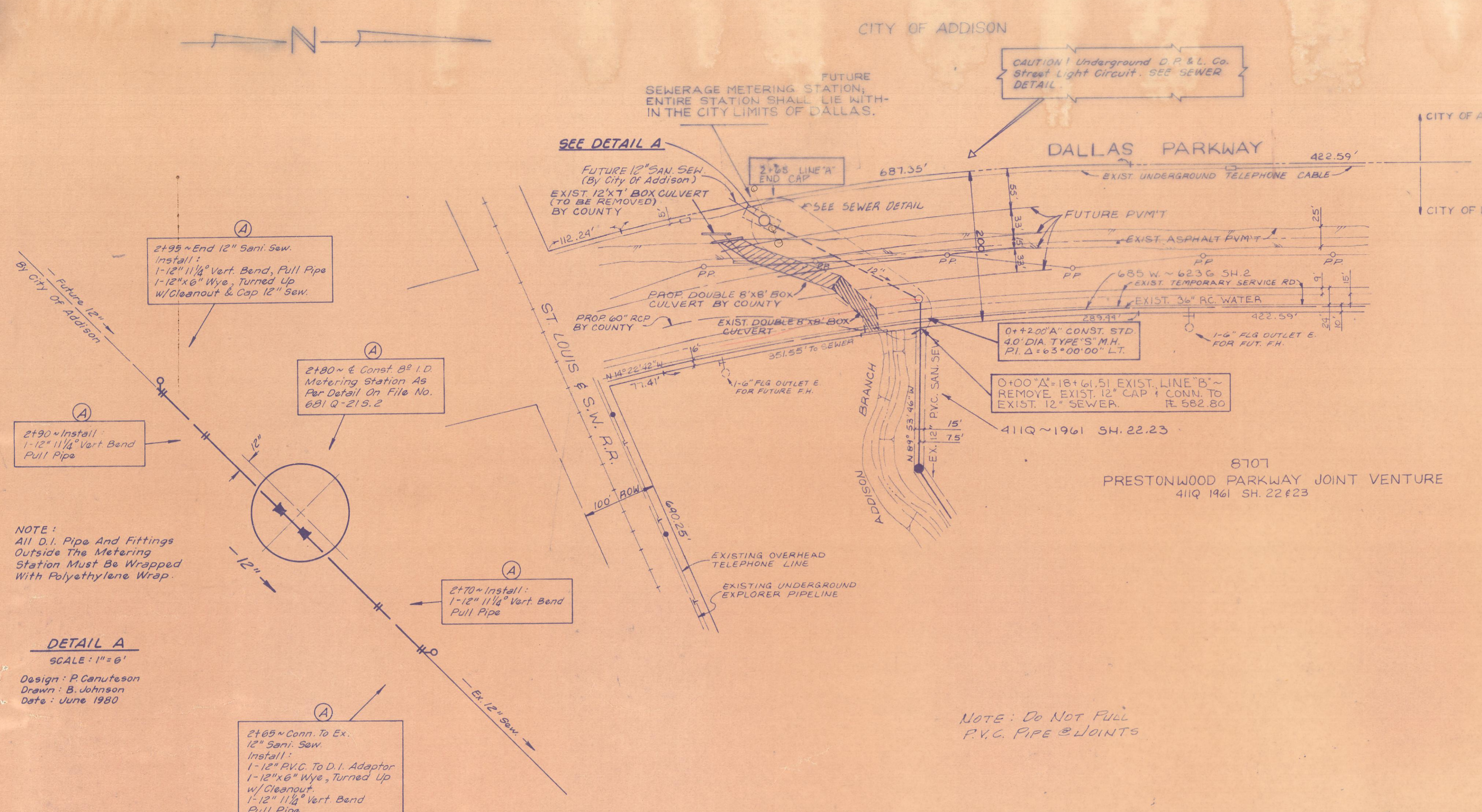
15525 Dallas Parkway

TTA  
 Gibbs & Hill, Inc.  
 DNT-115 Sheet R75 of R85

FF-13 DNT Sec VII 1984  
 Ex. U.F.I. STA 635-644

NOTE: A SEWERAGE METERING STATION DESIGNED BY THE CITY OF ADDISON SHALL BE INSTALLED IN THE AREA INDICATED AT SUCH TIME THAT THE 12" SANITARY SEWER IS EXTENDED.

NOTE: Contractor shall contact Mr. Leslie Berger, Engineering Div., Distribution Dept., TRS, WOKR/MS DAVIS, prior to excavating in vicinity of D.P. & L. Co. Facilities. Tel. No. 692-7239 or 692-7238.



NOTE: All D.I. Pipe And Fittings Outside The Metering Station Must Be Wrapped With Polyethylene Wrap.

DETAIL A  
SCALE: 1" = 6'

Design: P. Canufeson  
Drawn: B. Johnson  
Date: June 1980

NOTE: Do NOT Fill P.V.C. PIPE & JOINTS

REVISED SEWER ALIGNMENT

M. Paul Sears DATE: 8-29-79

C. Westlund DATE: 9-30-79

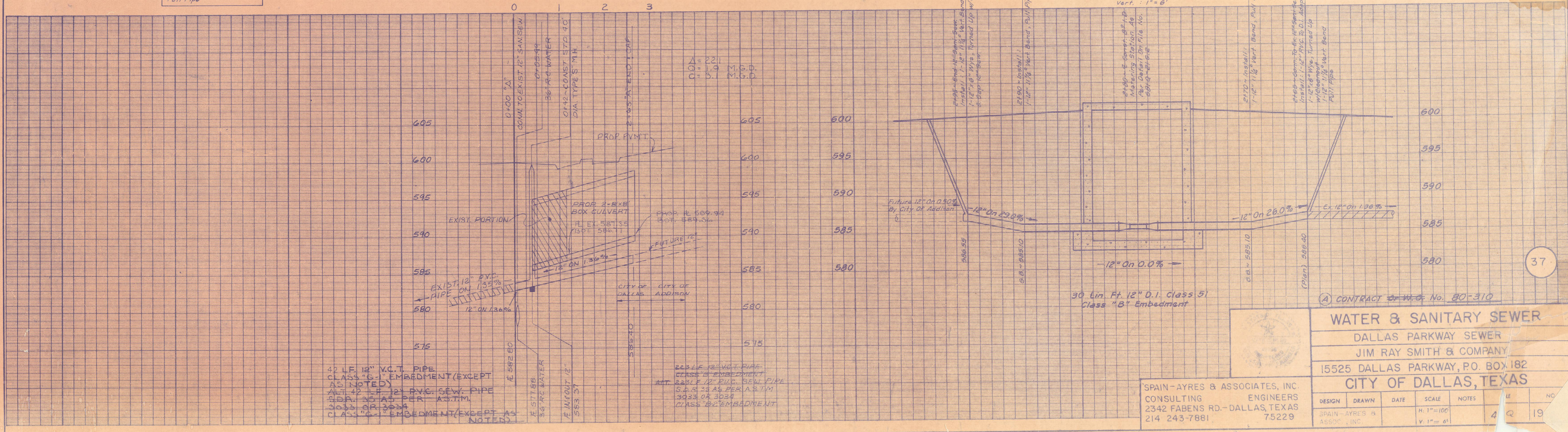
ENGINEER OF DESIGN ~ DALLAS WATER UTILITY DEPARTMENT.

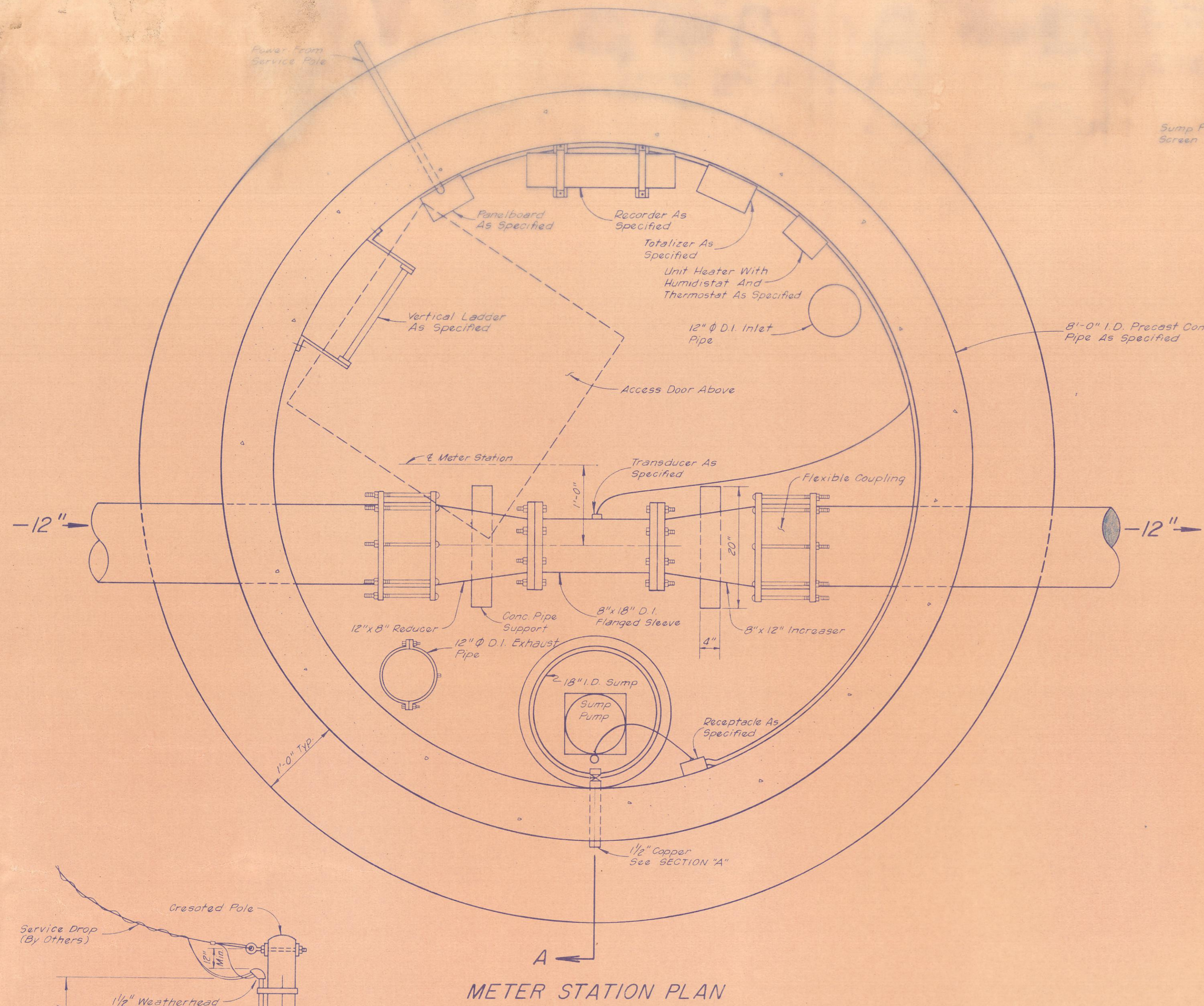
DESIGN BY: Mark C. Walsh  
SPAIN-AYRES ASSOC., INC. ENGINEERS DATE: 8-29-79

R.O.W. APPROVED: H. J. ... DATE: 6-25-79

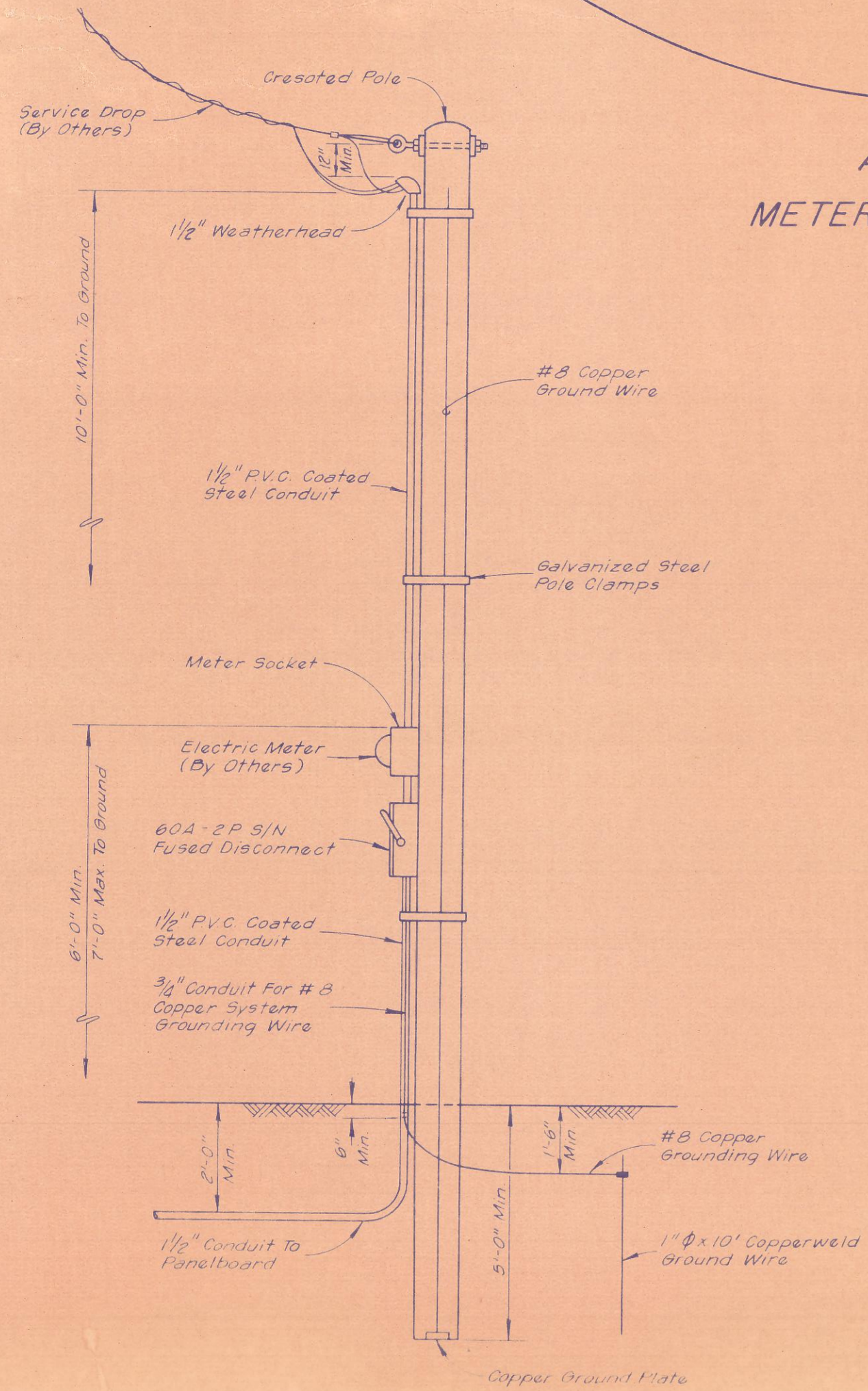
ENGINEERS OF DESIGN ~ DALLAS WATER UTILITIES (Sewer Only)

CONTRACT NO. 79-366-B - Cullum Construction Co. Inc. - 6-19-79

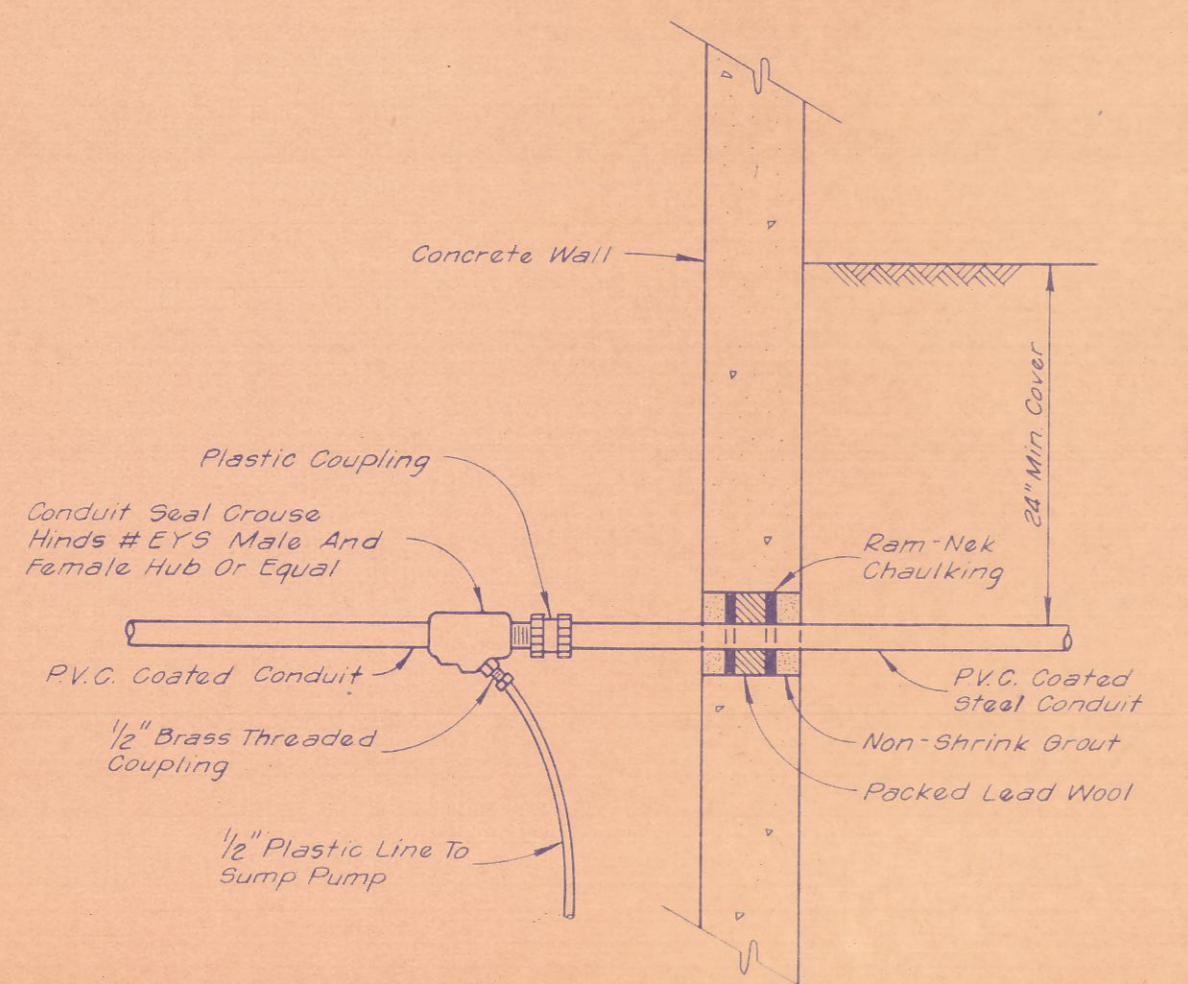




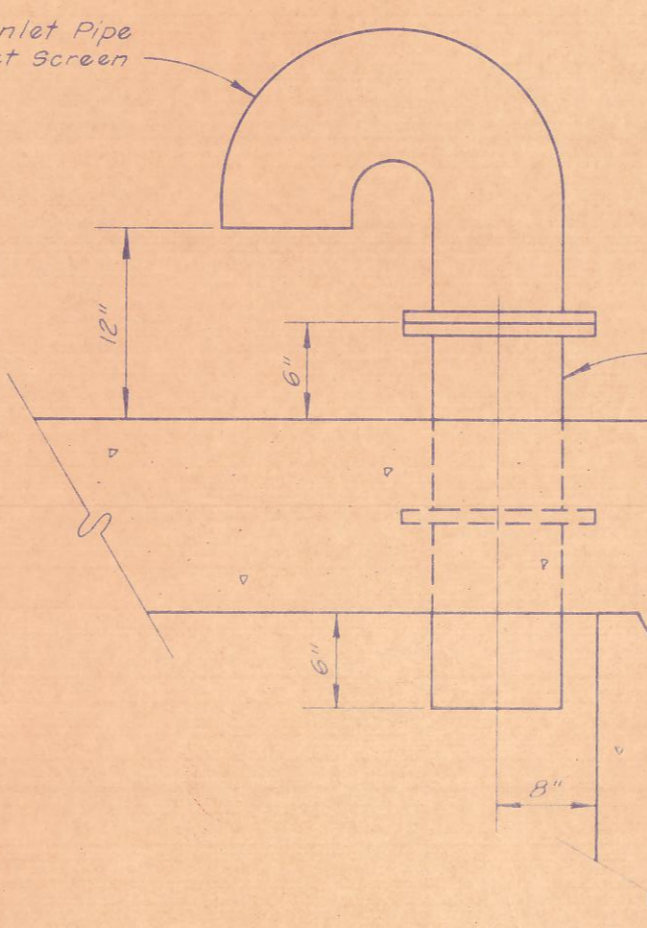
METER STATION PLAN



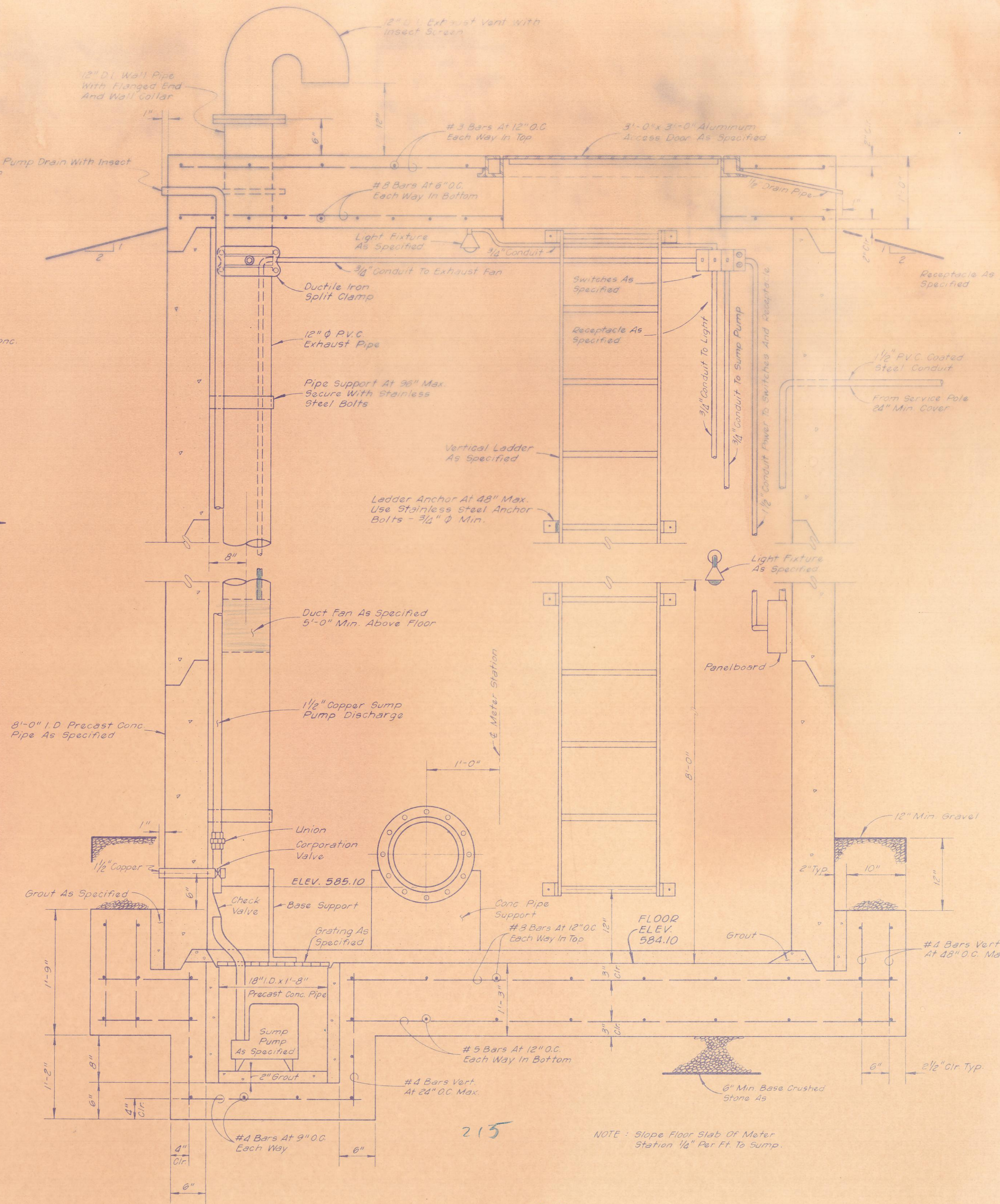
SERVICE POLE DETAIL



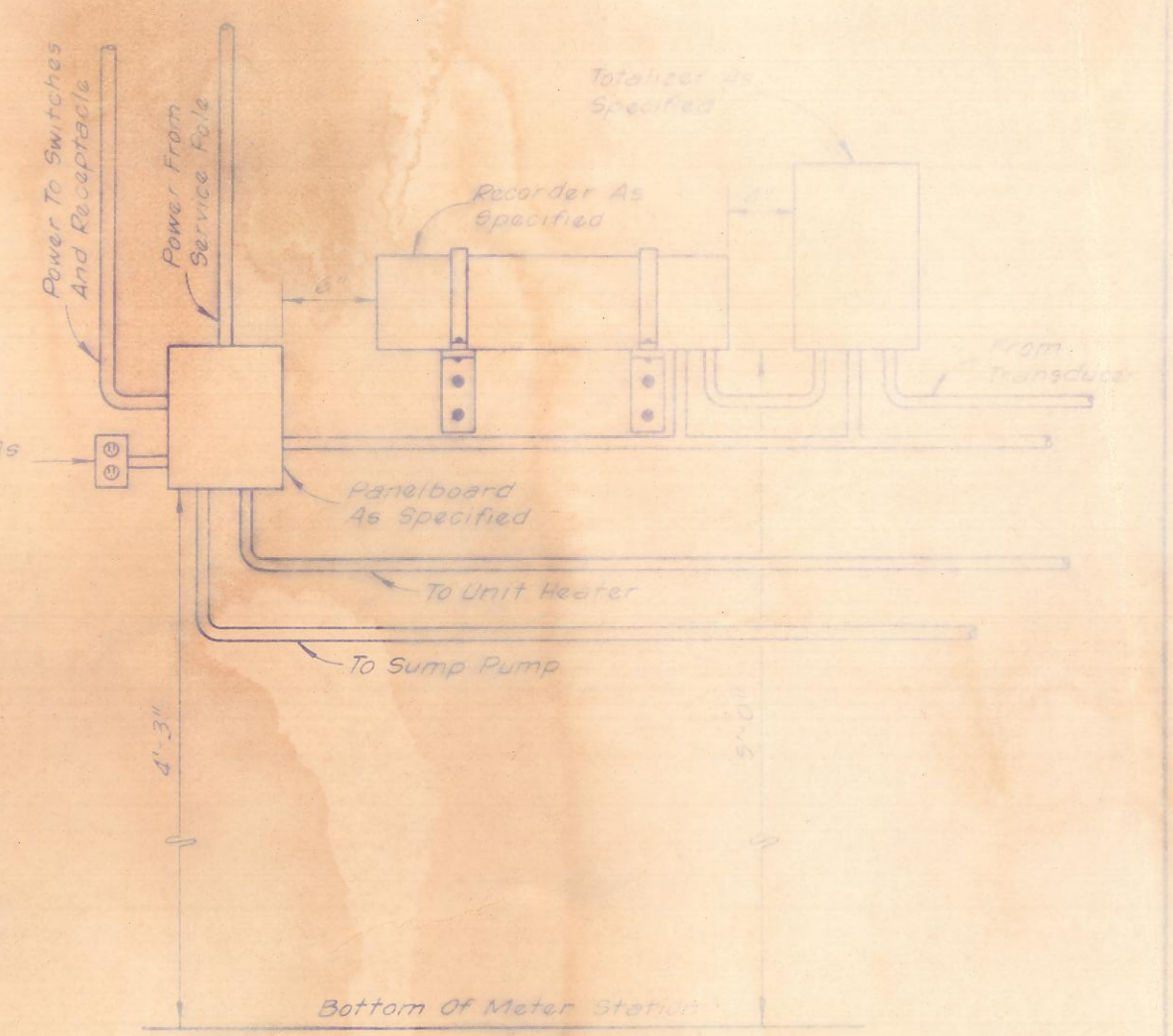
CONDUIT ENTRANCE & DRAIN DETAIL



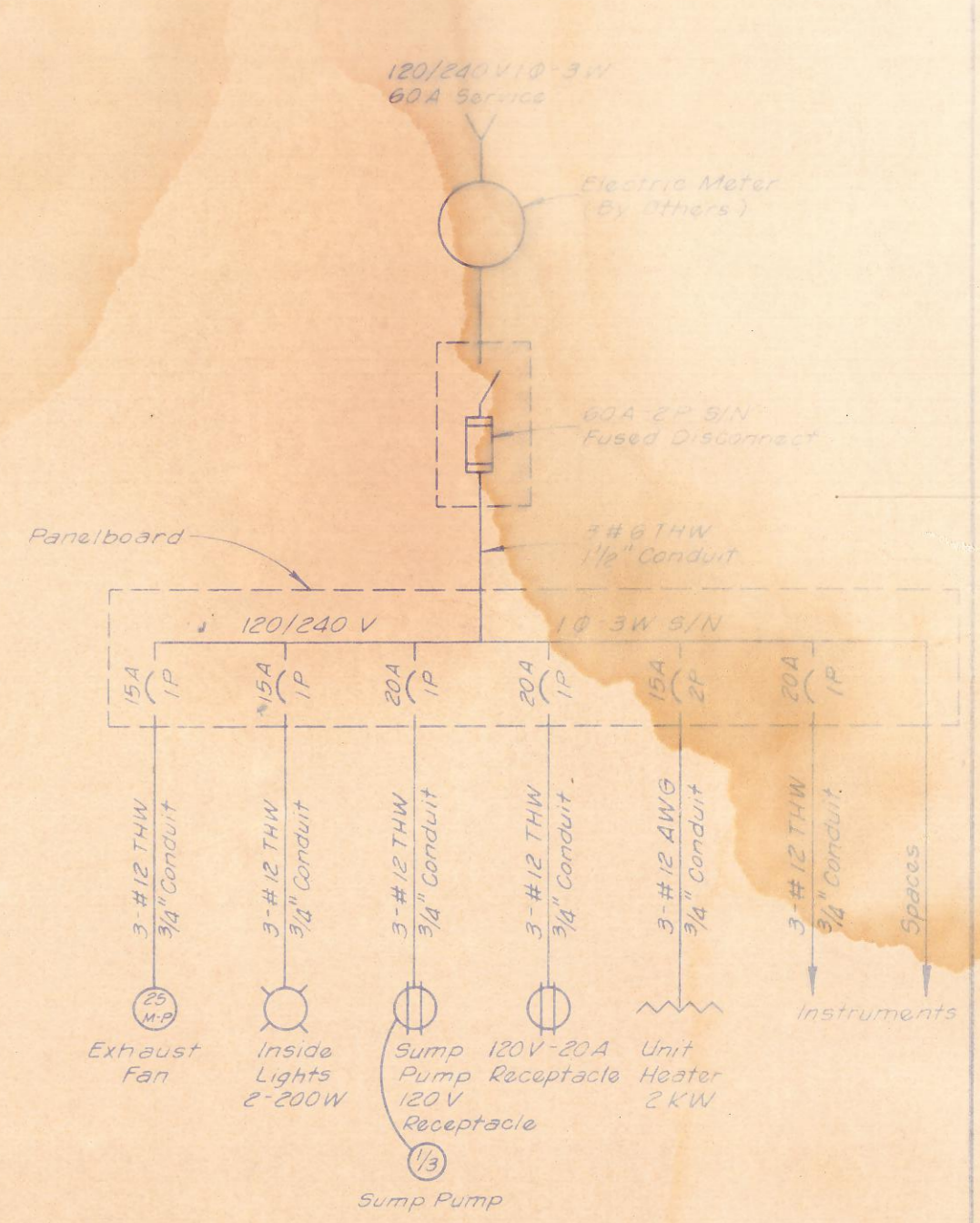
INLET PIPE DETAIL



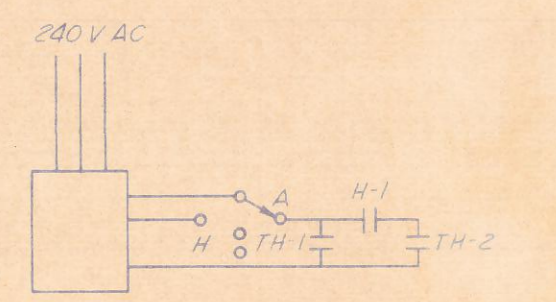
SECTION "A"



EQUIPMENT LAYOUT



ELECTRICAL DIAGRAM



CONTROL SETTINGS:  
 TH-1 - 50°F  
 TH-2 - 75°F  
 H-1 - 65% Closes On Rising Humidity

HEATER CONTROL DIAGRAM

Design Criteria Using Ultimate Strength

- $f_c' = 4,000 \text{ PSI}$
- $f_y = 60,000 \text{ PSI}$
- Safety Factor = 1.7
- Live Load = 17
- Dead Load = 14
- Dead Load =  $150 \text{ #/ft}^2$
- Live Load On Roof & Mat =  $125 \text{ #/ft}^2$
- Unit Wt. of Soil =  $120 \text{ #/ft}^3$
- A.C.I. Bldg. Code Provisions

NOTE: Slope floor slab of Meter Station  $1/8"$  Per Ft. To Sump.

CONTRACT NO. 80-310

**METER STATION**

ADDISON CREEK METERING STATION  
 IN ADDISON BRANCH  
 AT DALLAS PARKWAY  
 CITY OF DALLAS, TEXAS

DESIGN	DRAWN	DATE	SCALE	NOTES	FILE NO.
Limitation Johnson		June 1960	No Scale		681Q-215.2

