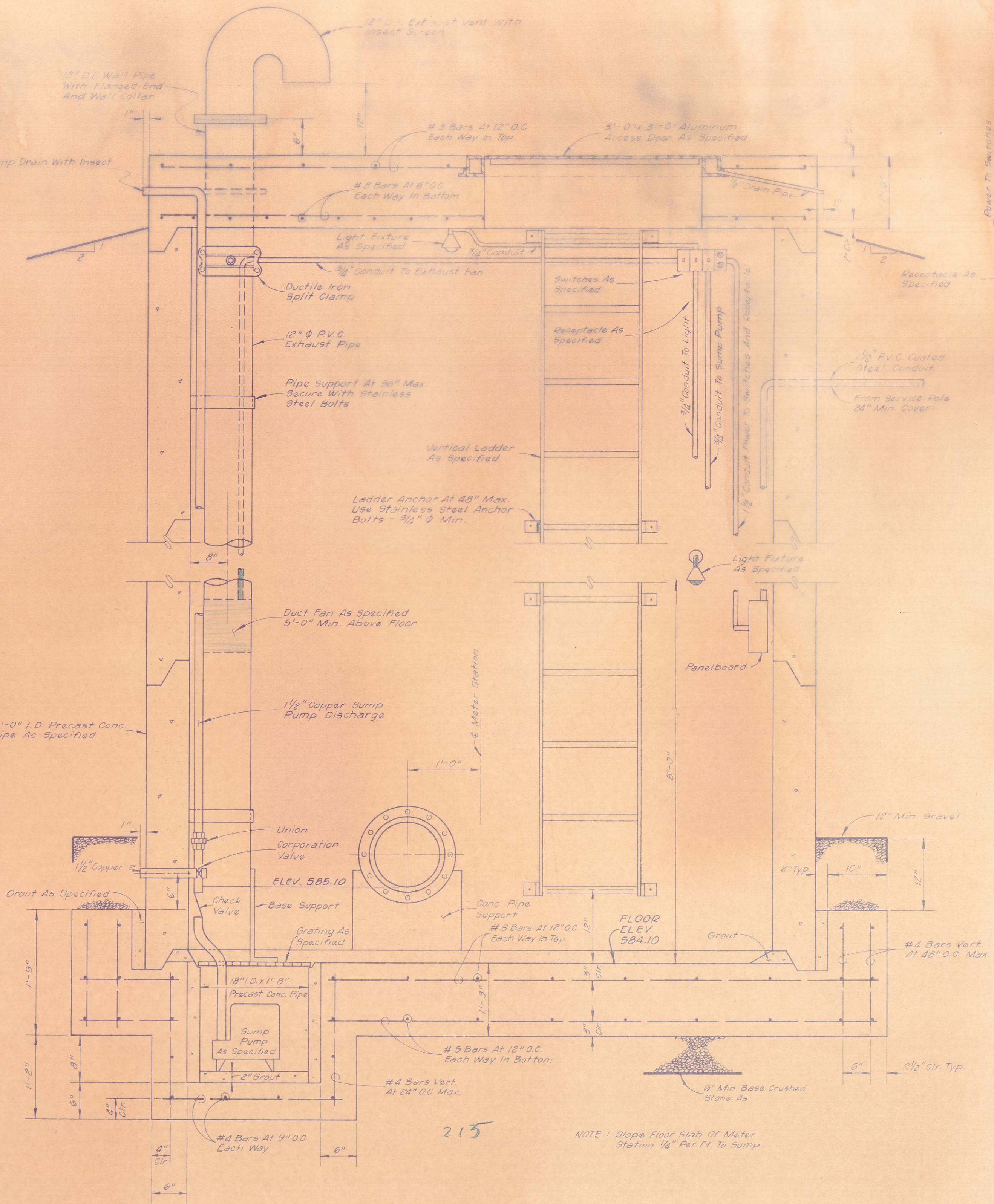
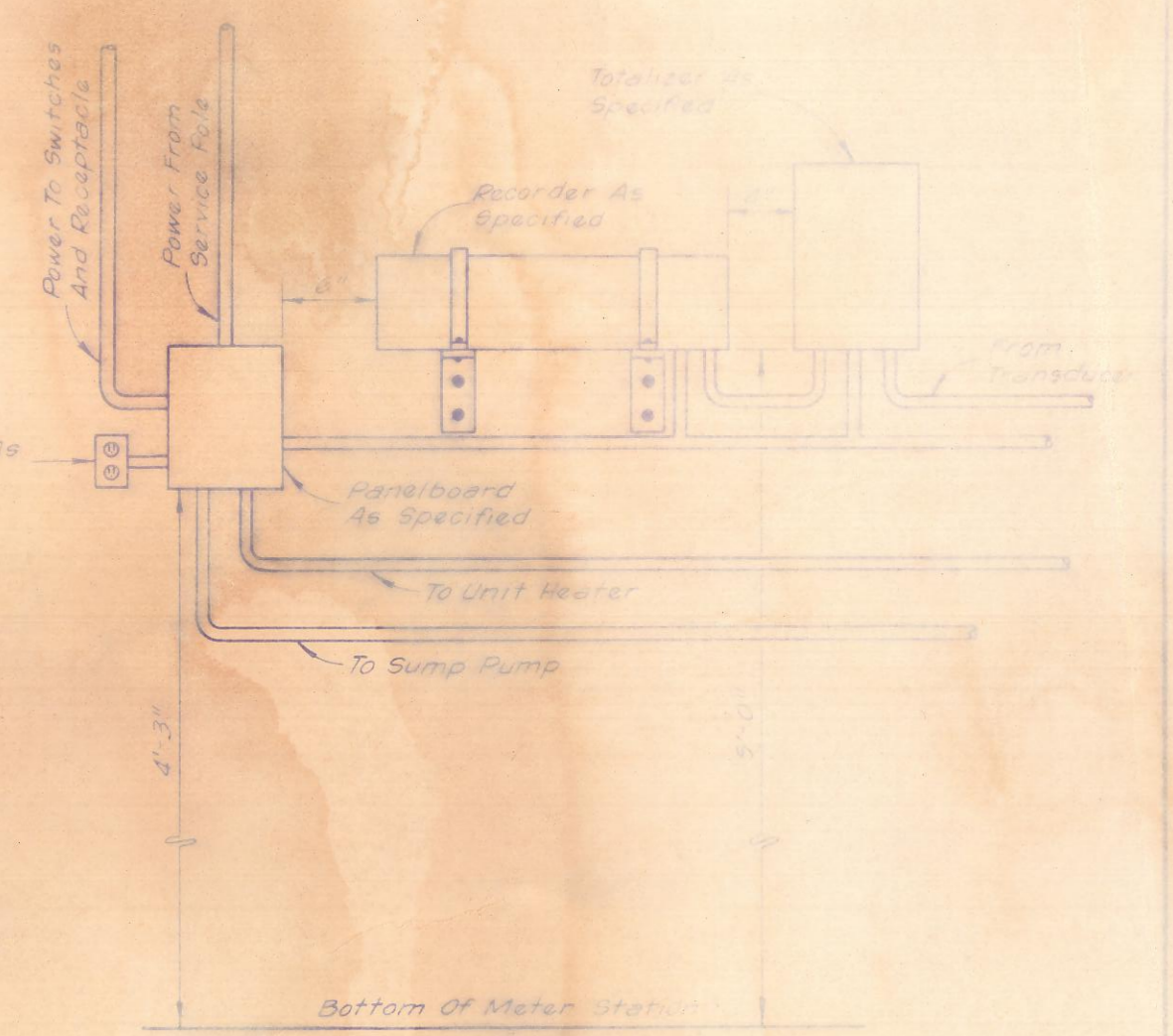


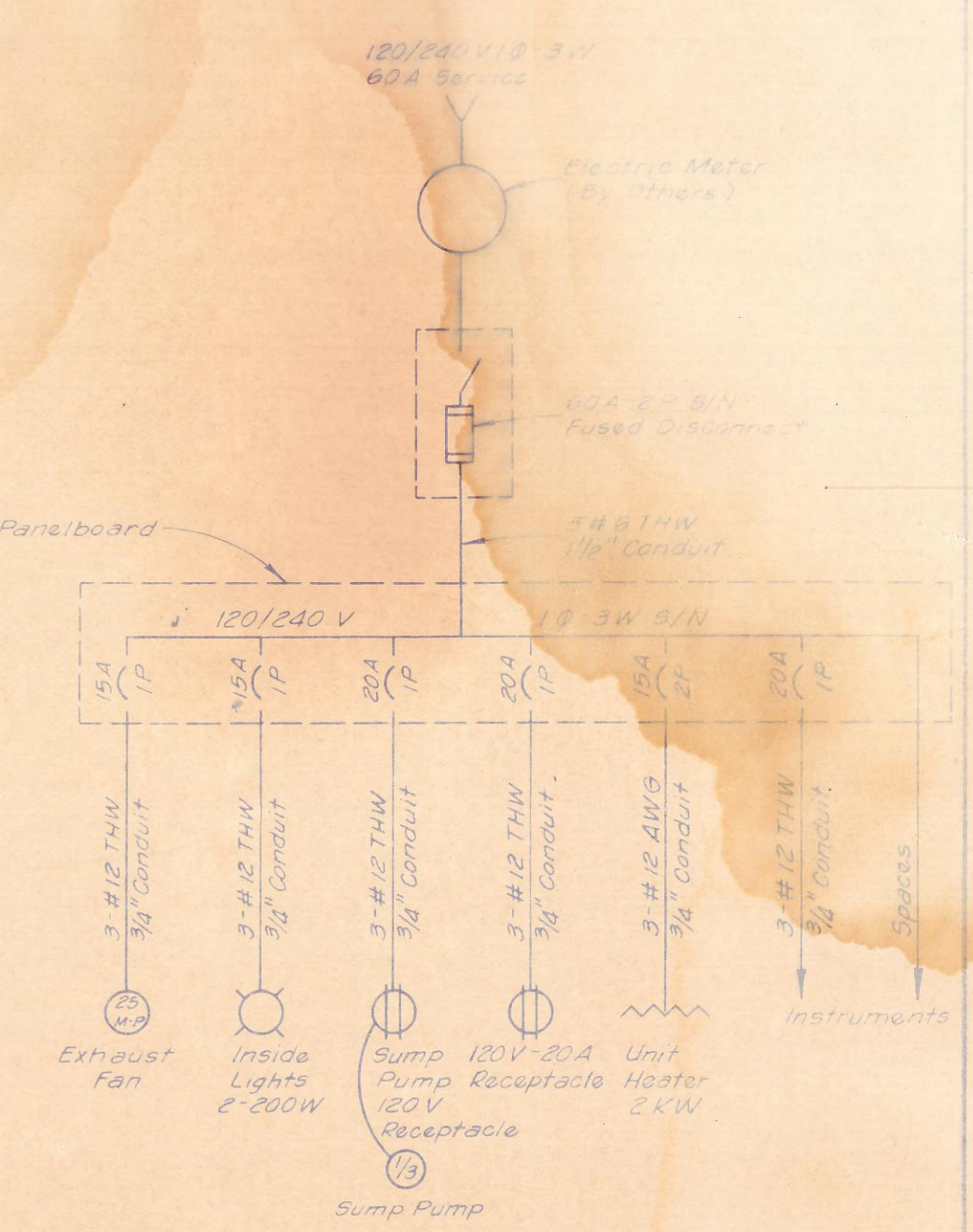
METER STATION PLAN



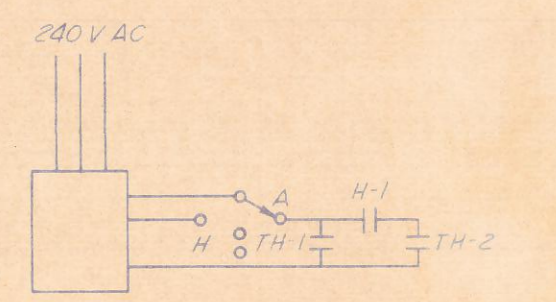
SECTION "A"



EQUIPMENT LAYOUT

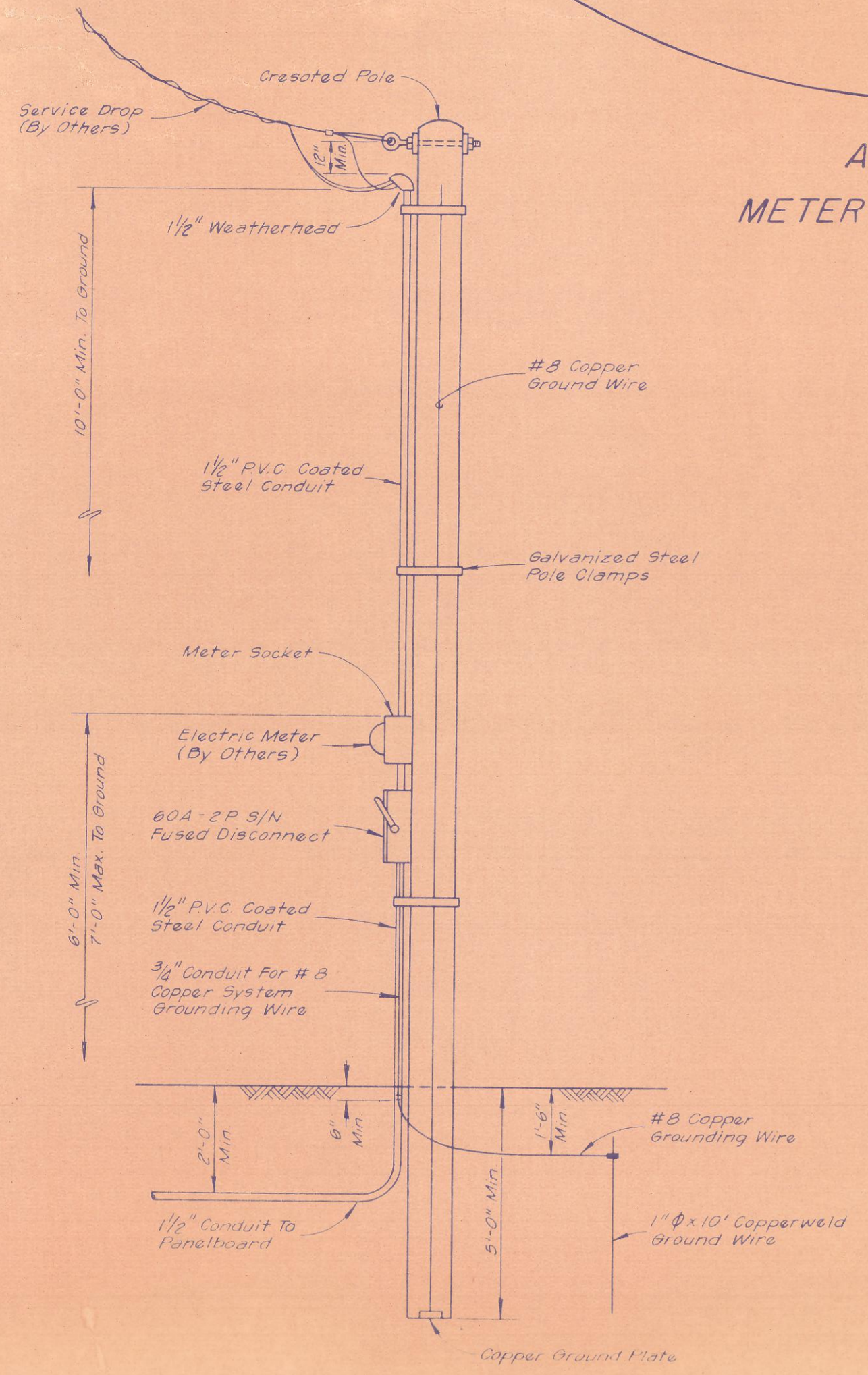


ELECTRICAL DIAGRAM

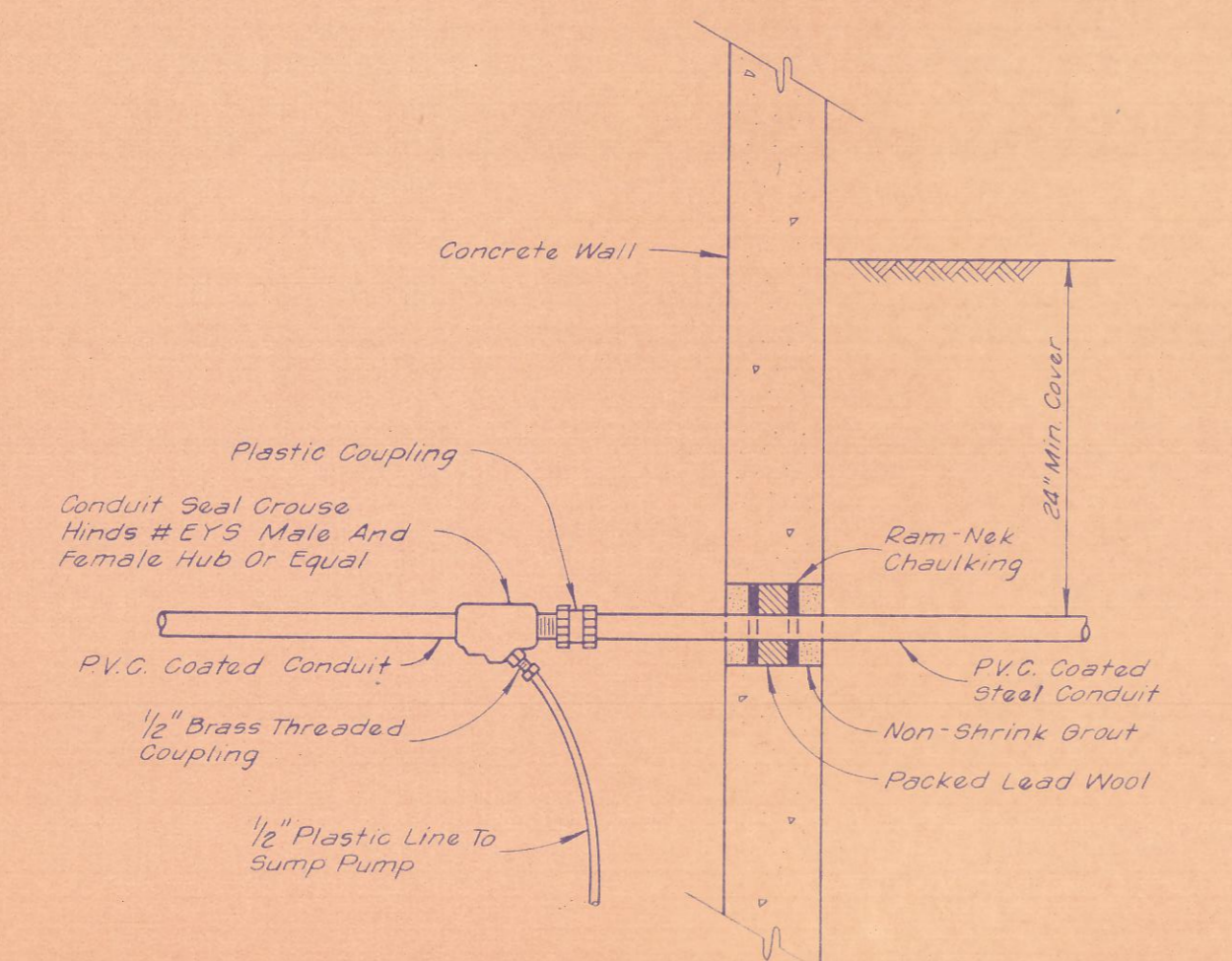


CONTROL SETTINGS:  
 TH-1 - 50°F  
 TH-2 - 75°F  
 H-1 - 65% Closes On Rising Humidity

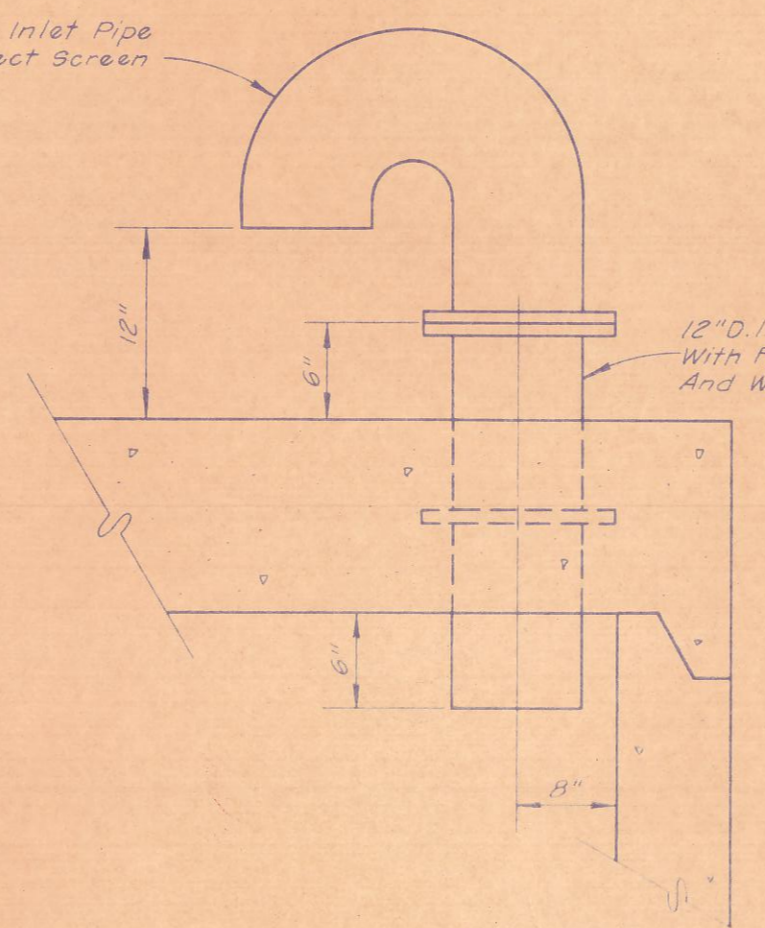
HEATER CONTROL DIAGRAM



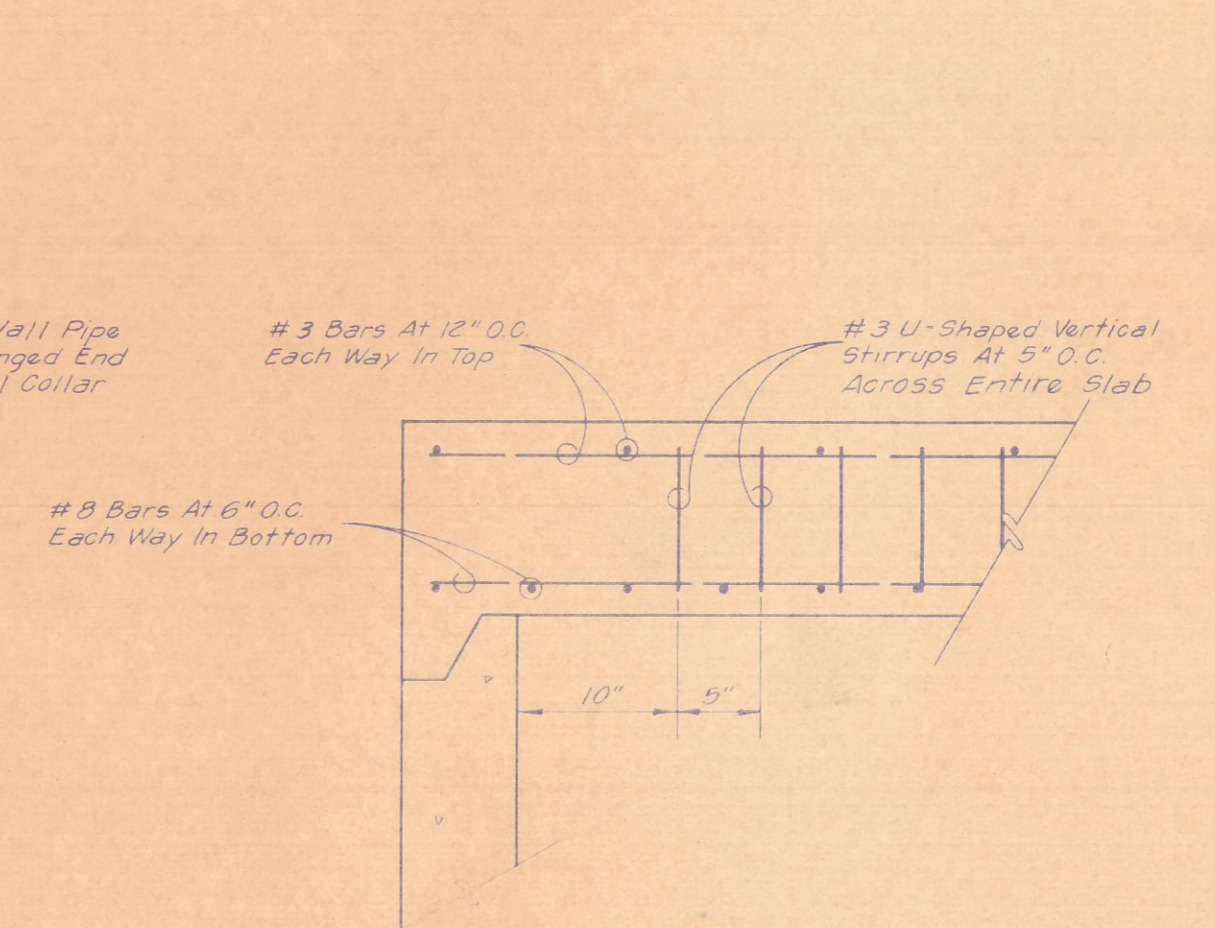
SERVICE POLE DETAIL



CONDUIT ENTRANCE & DRAIN DETAIL



INLET PIPE DETAIL



SHEAR REIN IN TOP SLAB

NOTE: Slope floor slab of Meter Station 1/8" Per Ft. To Sump.

Design Criteria Using Ultimate Strength

- $f_c' = 4,000 \text{ PSI}$
- $f_y = 60,000 \text{ PSI}$
- Safety Factor = 1.7
- Live Load = 17
- Dead Load = 14
- Dead Load = 150 #/ft<sup>2</sup>
- Live Load on Roof & Mat = 125 #/ft<sup>2</sup>
- Unit Wt. of Soil = 120 #/ft<sup>3</sup>
- A.C.I. Bldg. Code Provisions

CONTRACT NO. 80-310

**METER STATION**

ADDISON CREEK METERING STATION  
 IN ADDISON BRANCH  
 AT DALLAS PARKWAY  
 CITY OF DALLAS, TEXAS

DESIGN	DRAWN	DATE	SCALE	NOTES	FILE	NO.
Limitson	J Johnson	June 1960	No Scale			681Q-215.2