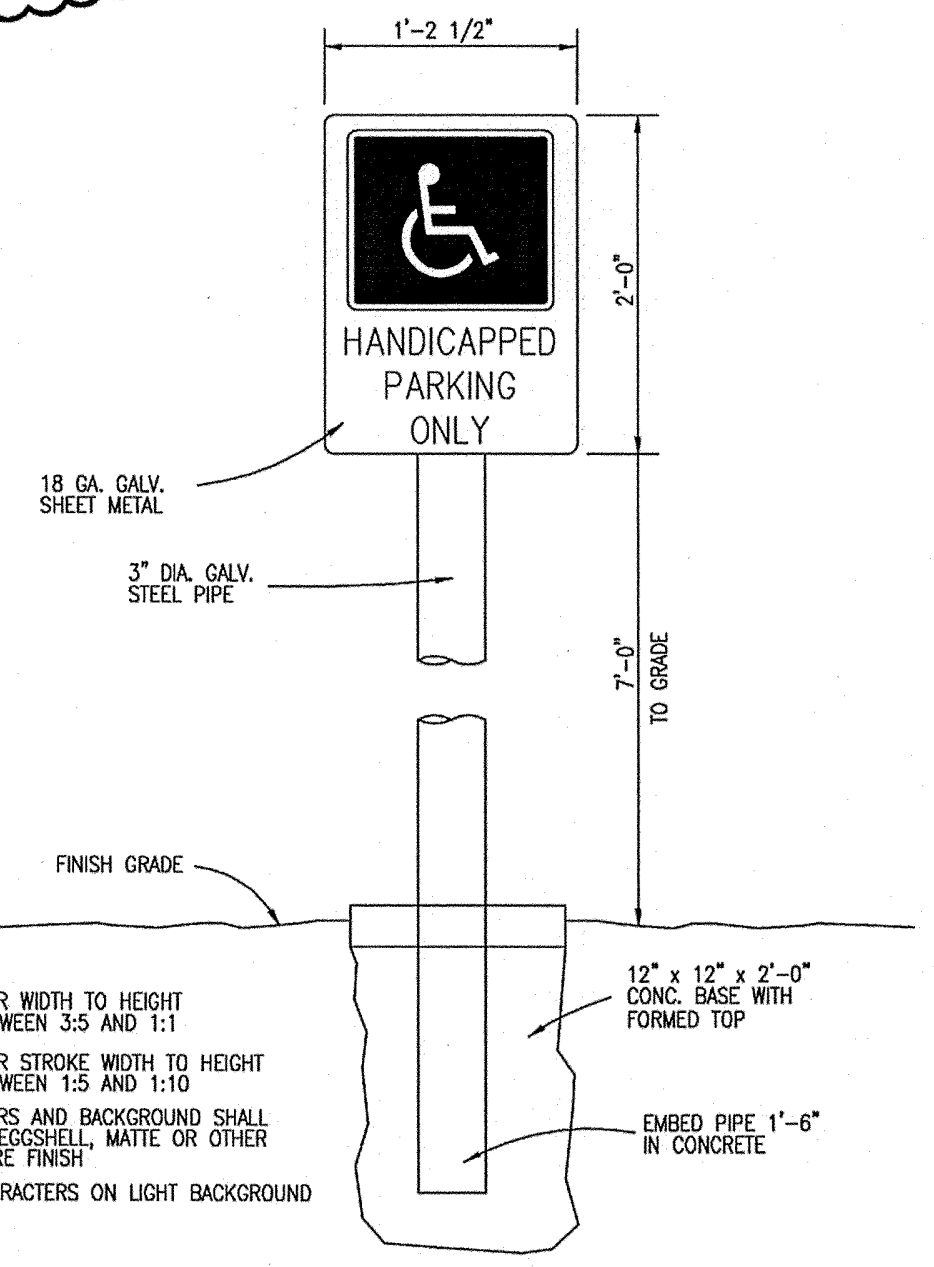


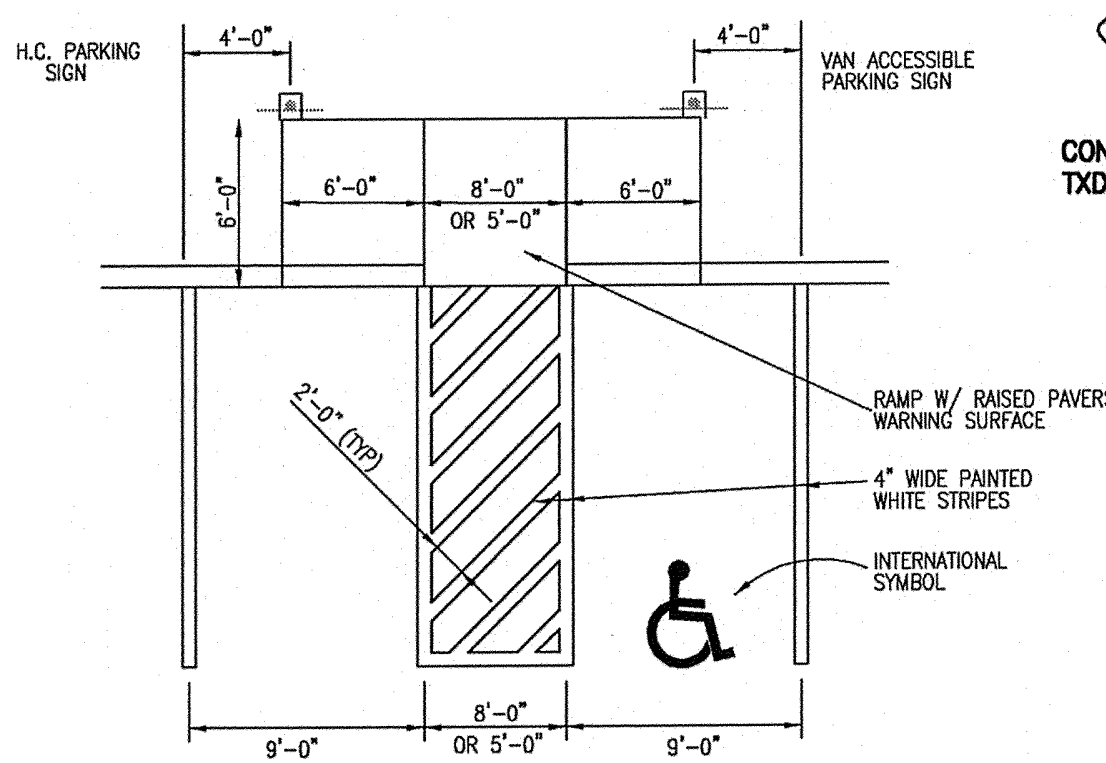
- COMMERCIAL DRIVE PAVEMENT SECTION (REFERENCE PAVING DETAIL SHEET)
- 23' B-B PAVEMENT SECTION (REFERENCE PAVING DETAIL SHEET)
- ALLEY PAVEMENT SECTION (REFERENCE PAVING DETAIL SHEET)

NOTE:
REFERENCE HARDSCAPE PLANS (SHEET L1.1 TO L1.3)
FOR SIDEWALK LOCATIONS. REFERENCE PLATE 12 FOR
BRICK SIDEWALK INSTALLATION DETAILS.

BARRIER FREE RAMP TOTALS:
 TYPE 1 - 5
 TYPE 2 - 2
 TYPE 7 - 8
 TYPE 8 - 7
 TYPE 10 - 6
 TYPE 21 - 1



HANDICAP PARKING SIGN
NOT TO SCALE



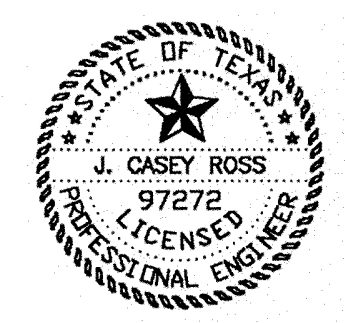
HANDICAP PARKING DETAIL
NOT TO SCALE

BENCHMARKS:
 CITY OF ADDISON BENCHMARK NO. 13:
 SQUARE CUT ON THE BACK OF CURB AT THE CENTER OF AN INLET
 AT THE SOUTHEAST CORNER OF BELTLINE ROAD AND SURVEYOR
 BOULEVARD.
 ELEVATION = 594.94'

CITY OF ADDISON BENCHMARK NO. 18:
 SQUARE CUT ON COSERVY ELECTRIC VAULT AT THE NORTHEAST
 CORNER OF BELTLINE ROAD AND MIDWAY ROAD.
 ELEVATION = 627.93'

THESE CONSTRUCTION PLANS WERE PREPARED
 UNDER THE RESPONSIBLE SUPERVISION OF J.
 CASEY ROSS, LICENSED PROFESSIONAL ENGINEER
 NO. 97272

J. Casey Ross 1/3/08



NO.	DATE	BY	REVISION
1	1/2/08	JCR	REV ALL TYPE 5 TO TYPE 8 & ADD ONE TYPE 7 RAMP

PAVING PLAN						
ASBURY CIRCLE						
TOWN OF ADDISON						
DALLAS COUNTY, TEXAS						
DOWDEY, ANDERSON & ASSOCIATES, INC.						
5225 Village Creek Drive, Suite 200 Plano, Texas 75093 972-931-0694						
DESIGN	DRAWN	CHECKED	DATE	SCALE	JOB	SHEET
JCR	MMP	JCR	10/20/06	1"=40'	06010	1