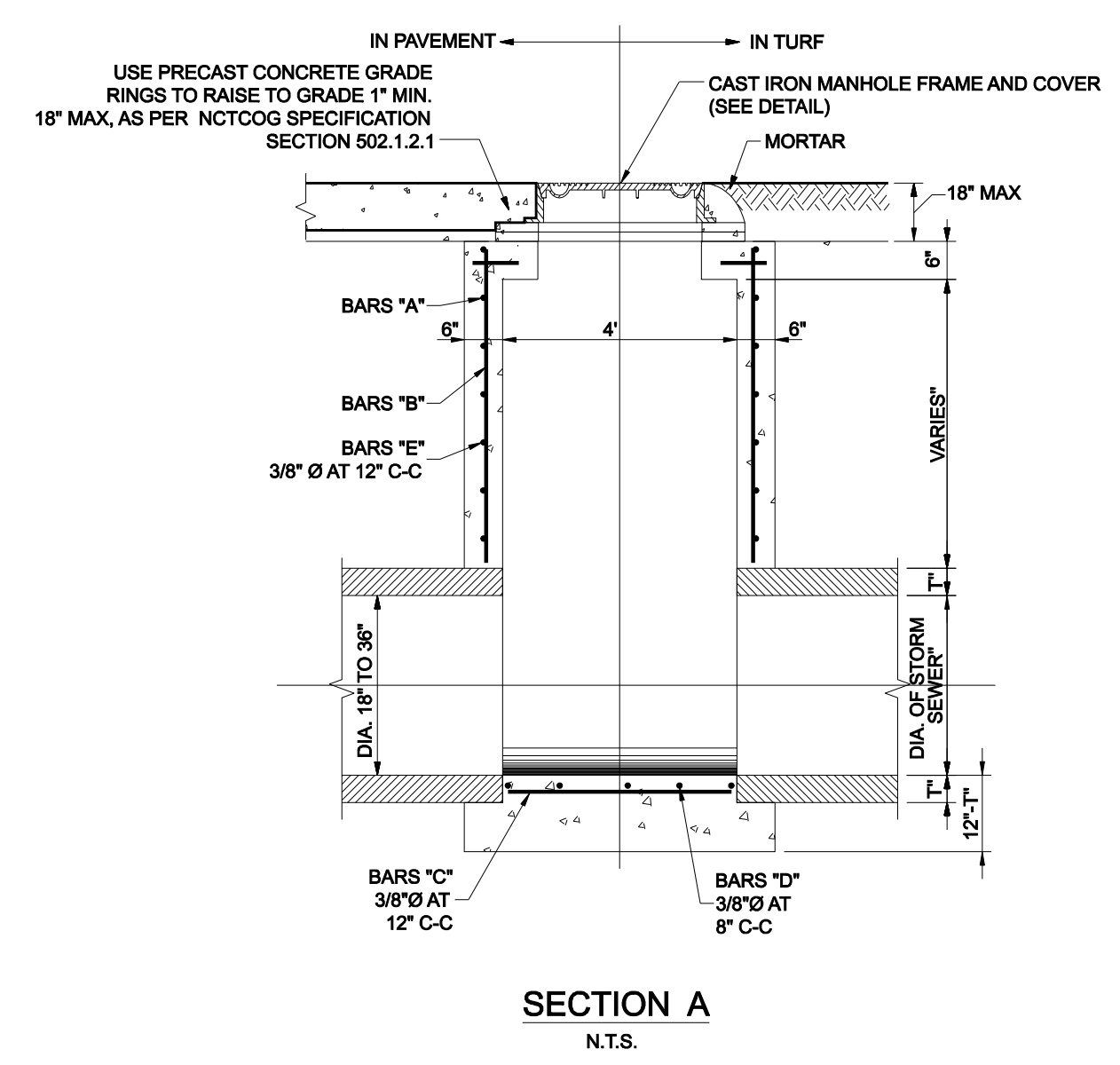
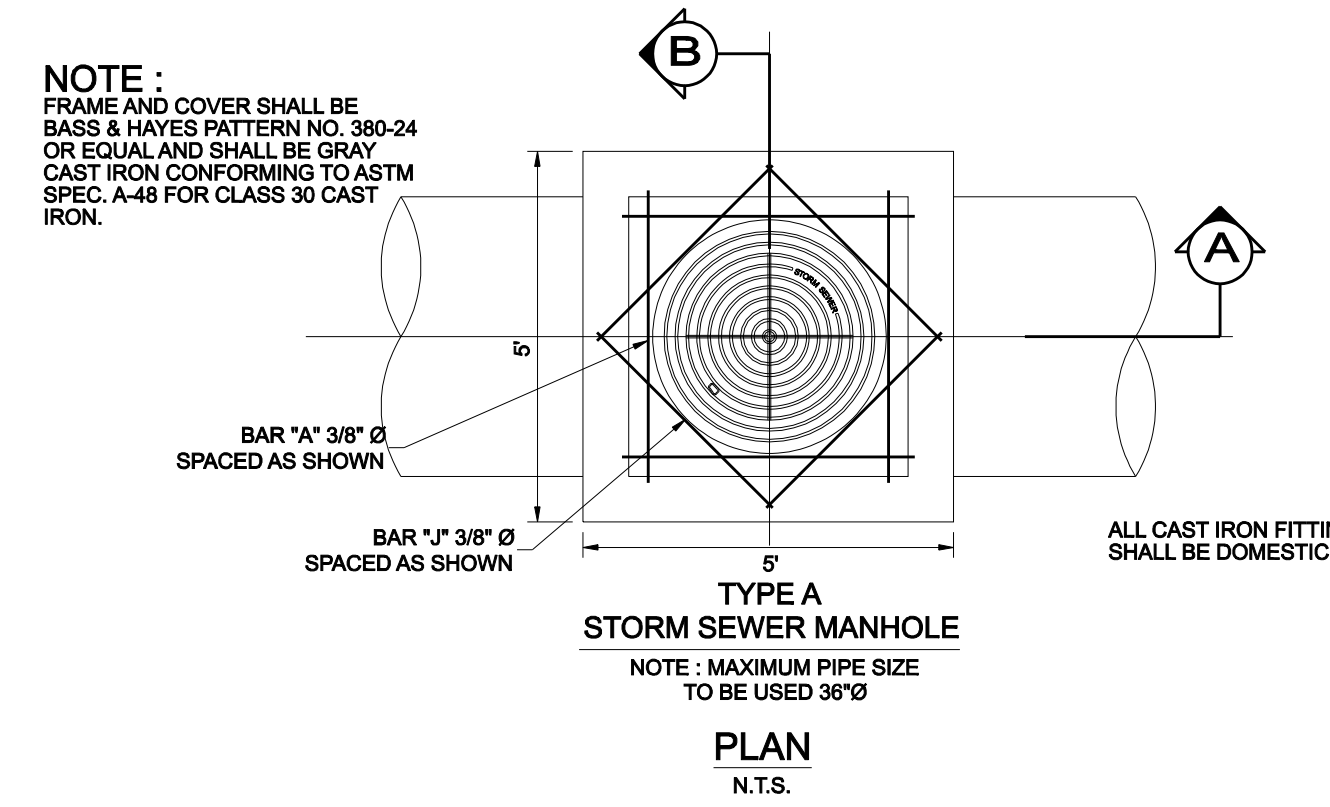


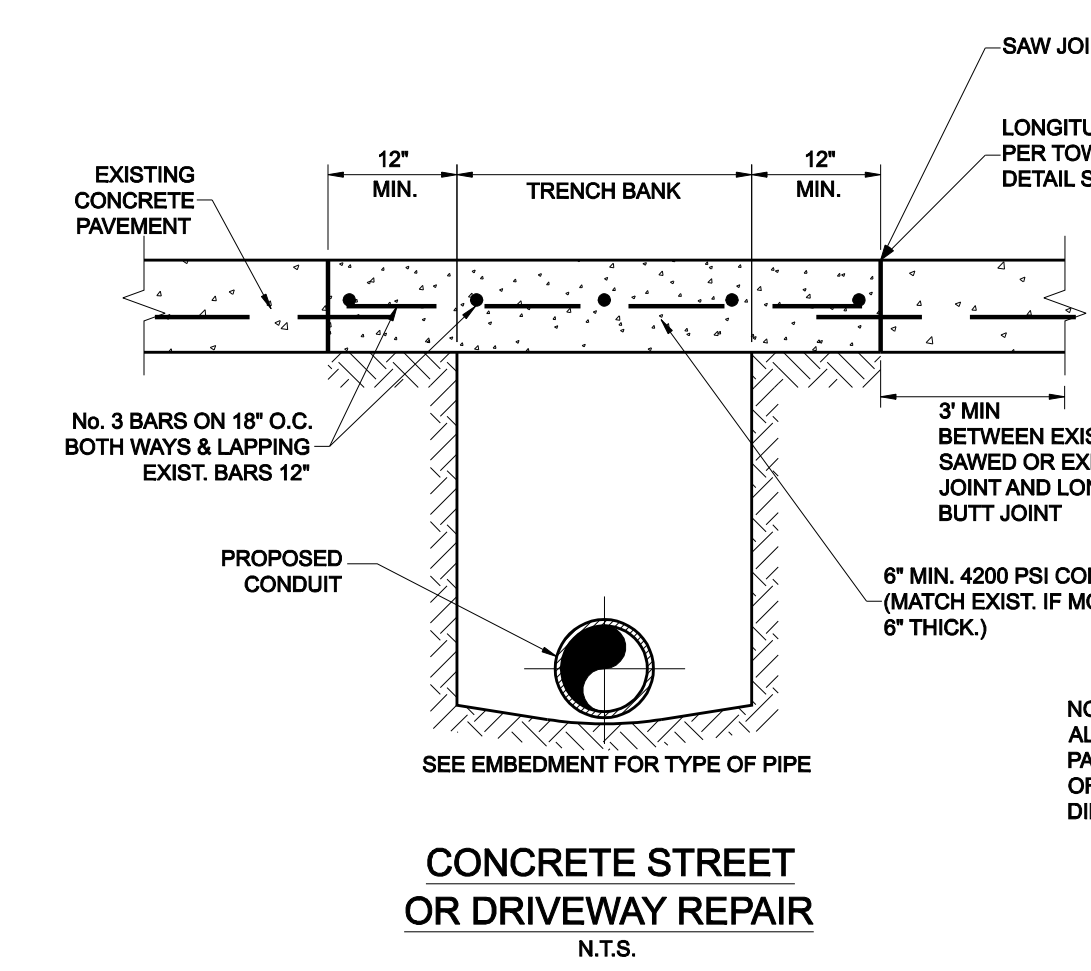
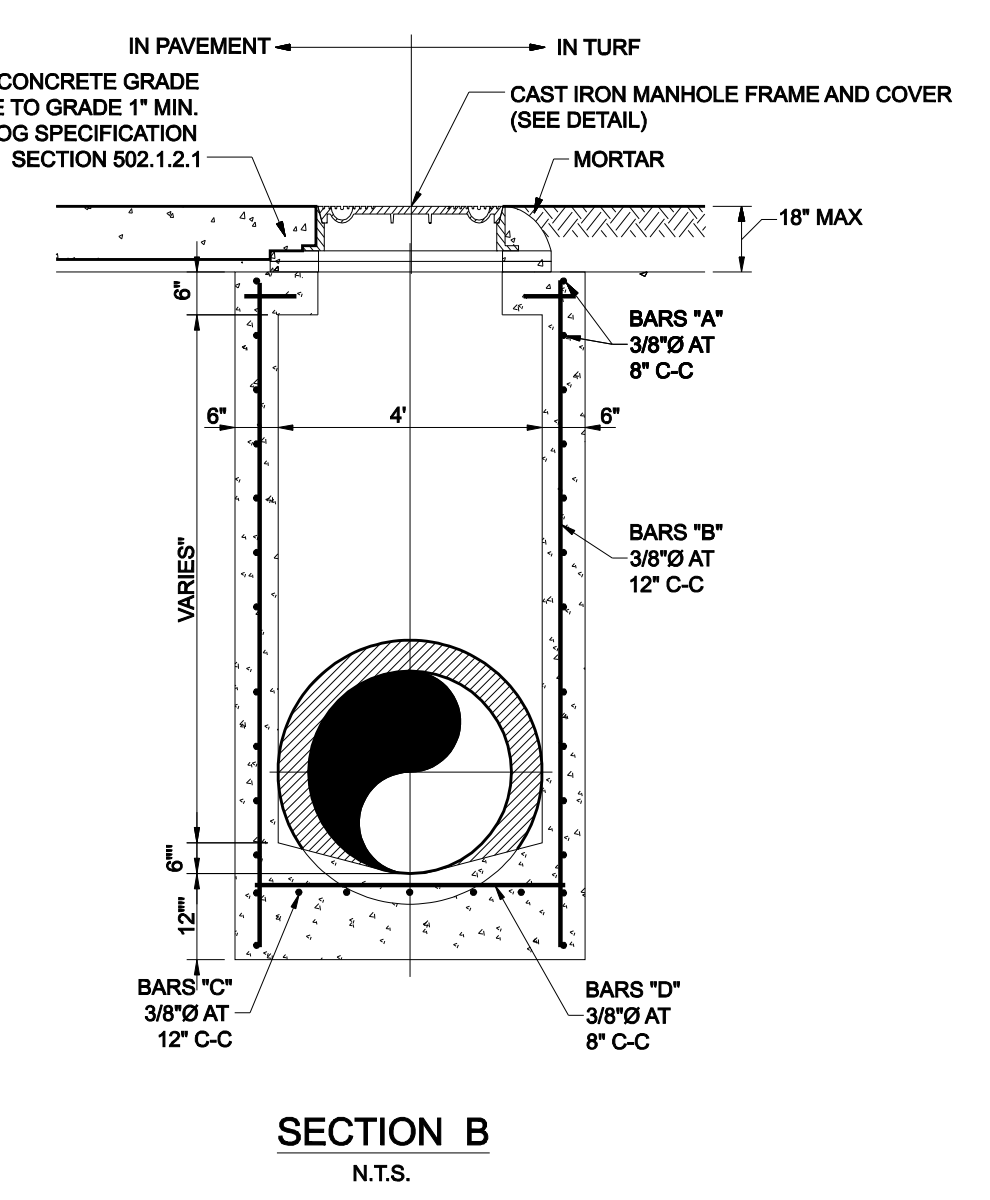
LOAD RATING <b>HEAVY DUTY</b>	COATING <b>DIPPED</b>	ESTIMATED WEIGHT COVER: 193 LBS FRAME: 151 LBS	MATERIAL SPECIFICATION COVER - GRAY IRON ASTM A48 CL35B FRAME - GRAY IRON ASTM A48 CL35B
----------------------------------	--------------------------	--	--

DESIGNATES MACHINE SURFACE

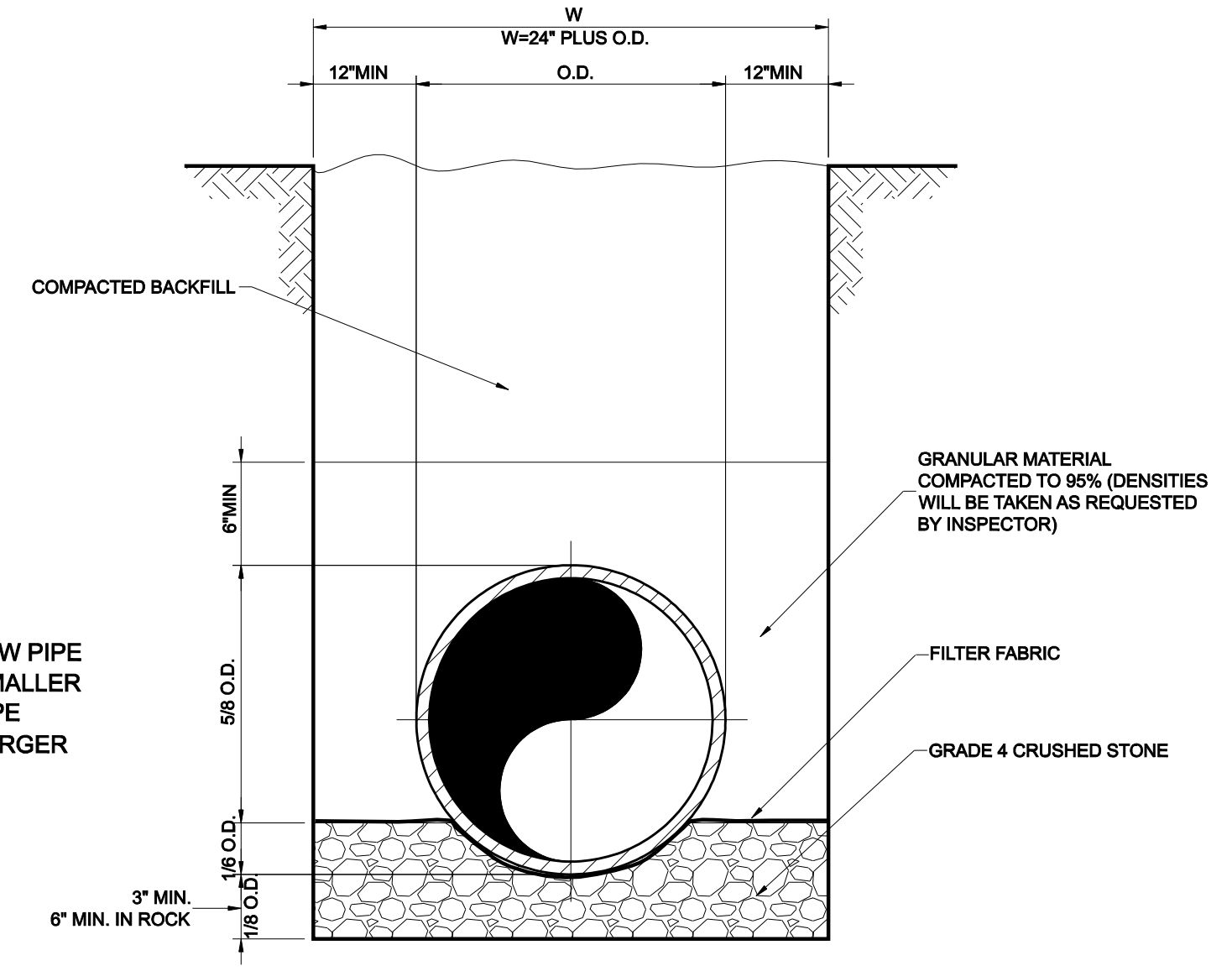
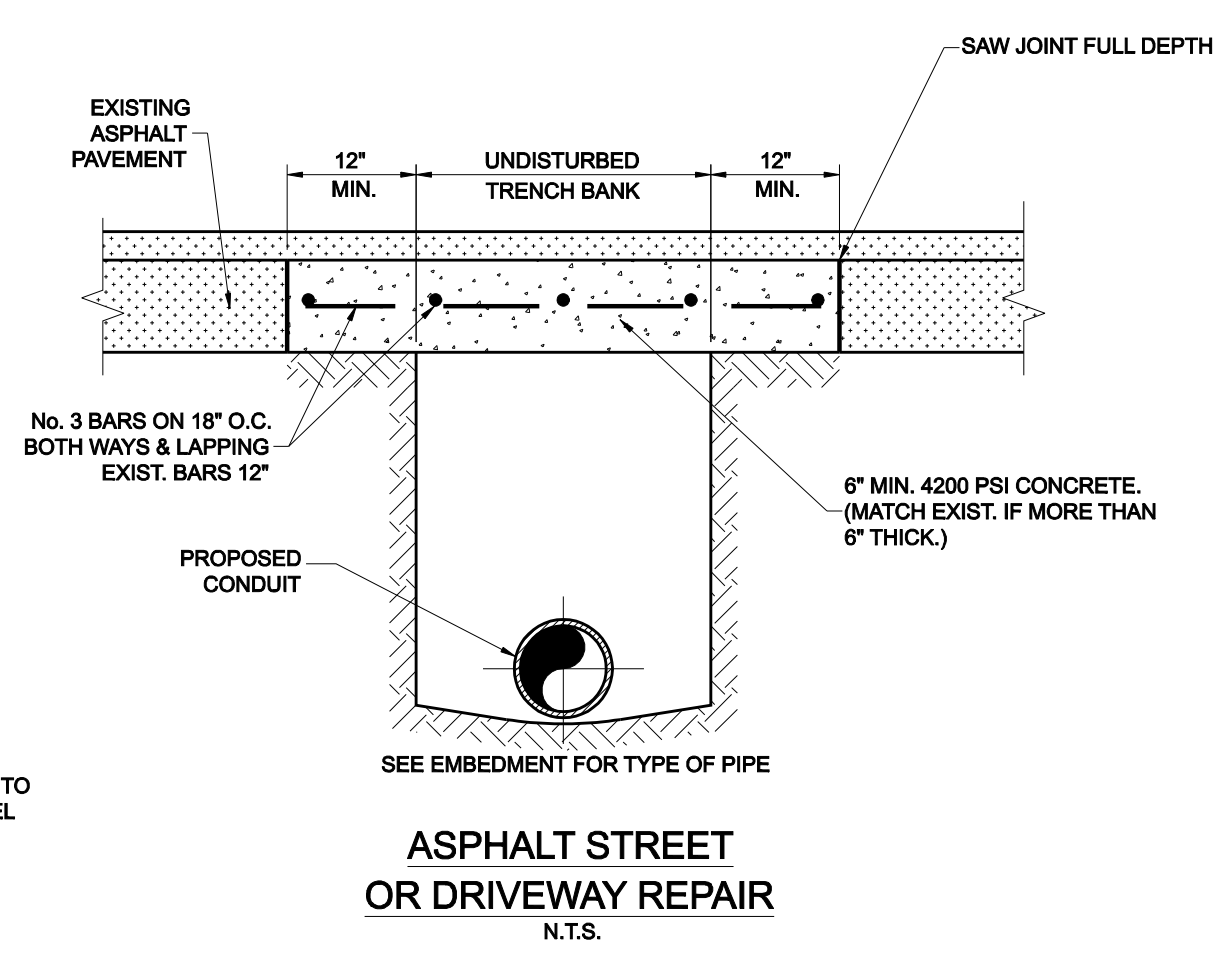
**CAST IRON FRAME AND COVER**



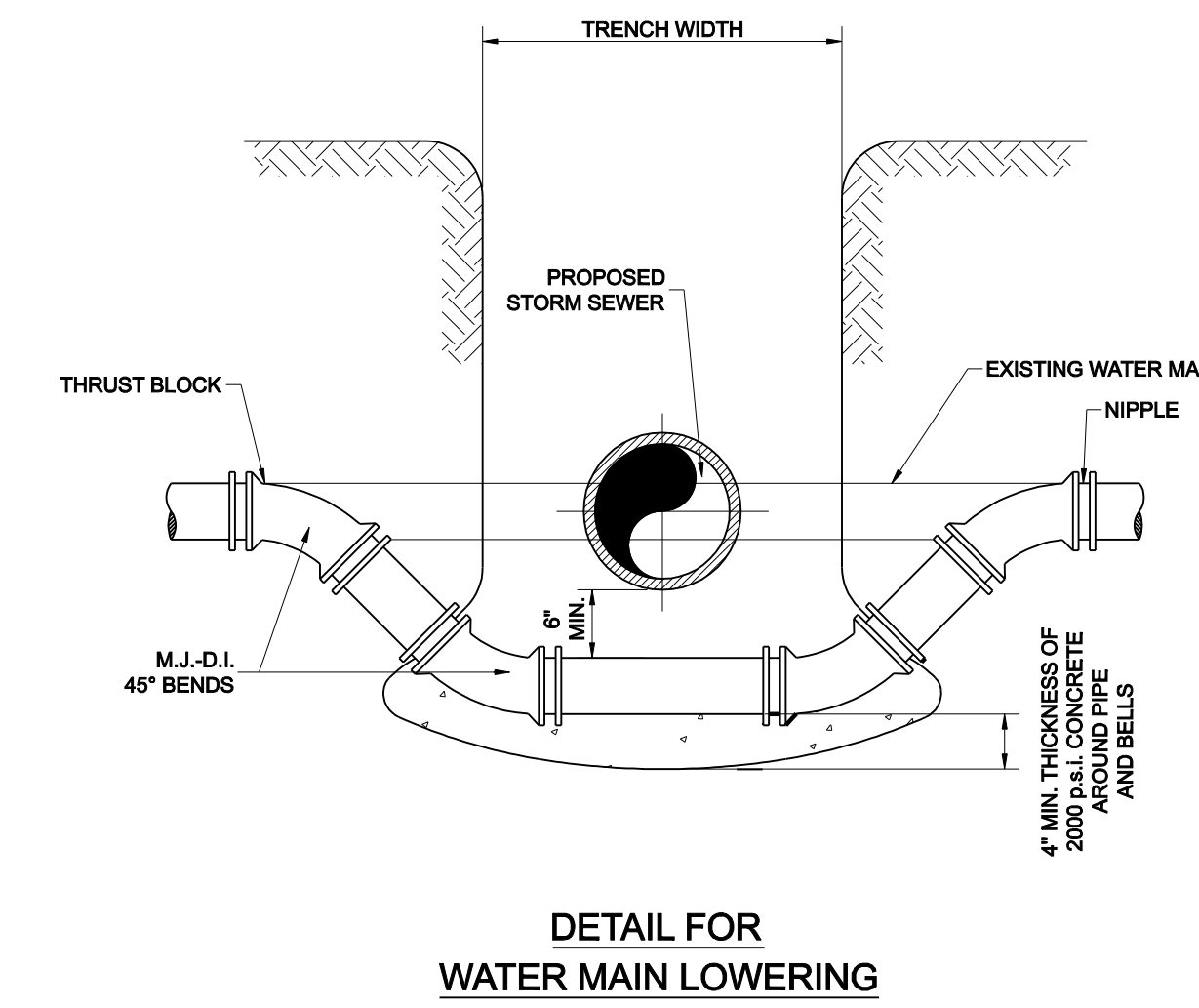
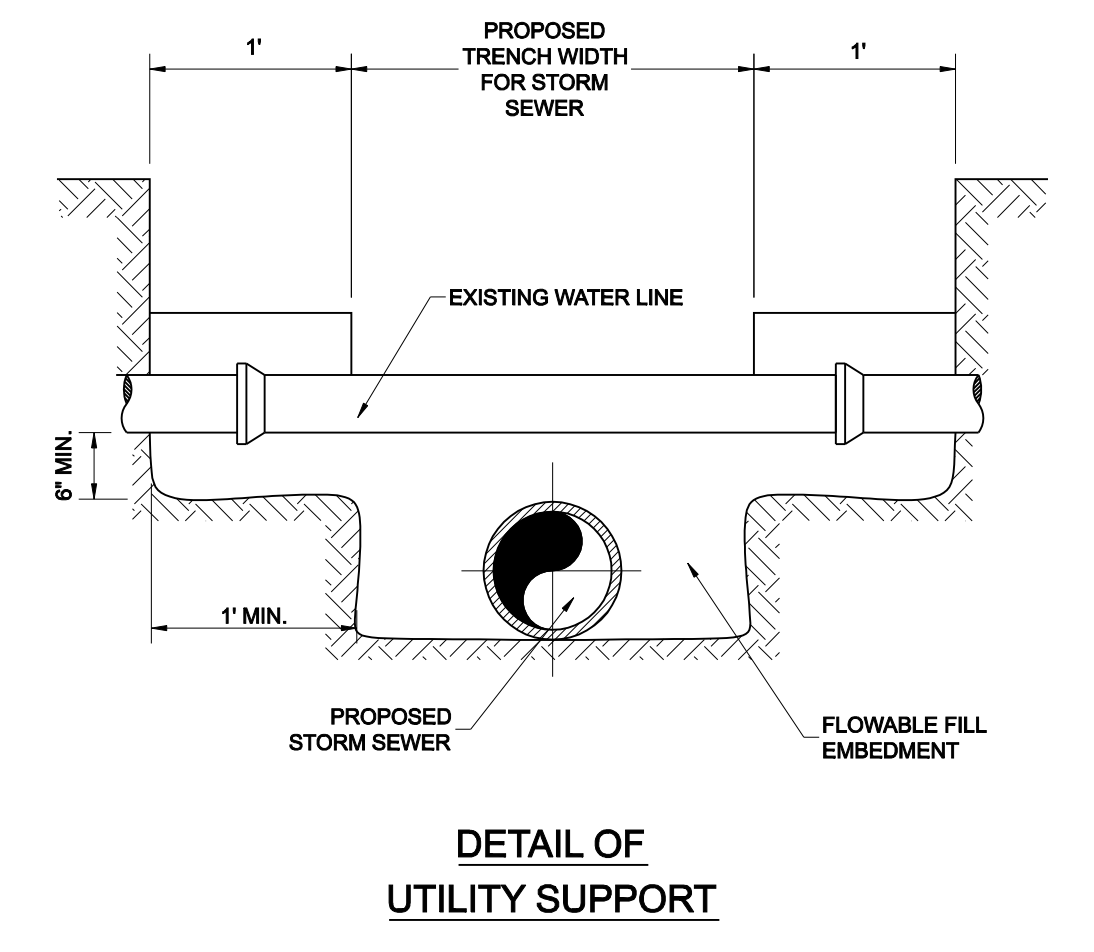
**TYPE 'A' STORM DRAIN MANHOLE**  
 N.T.S.



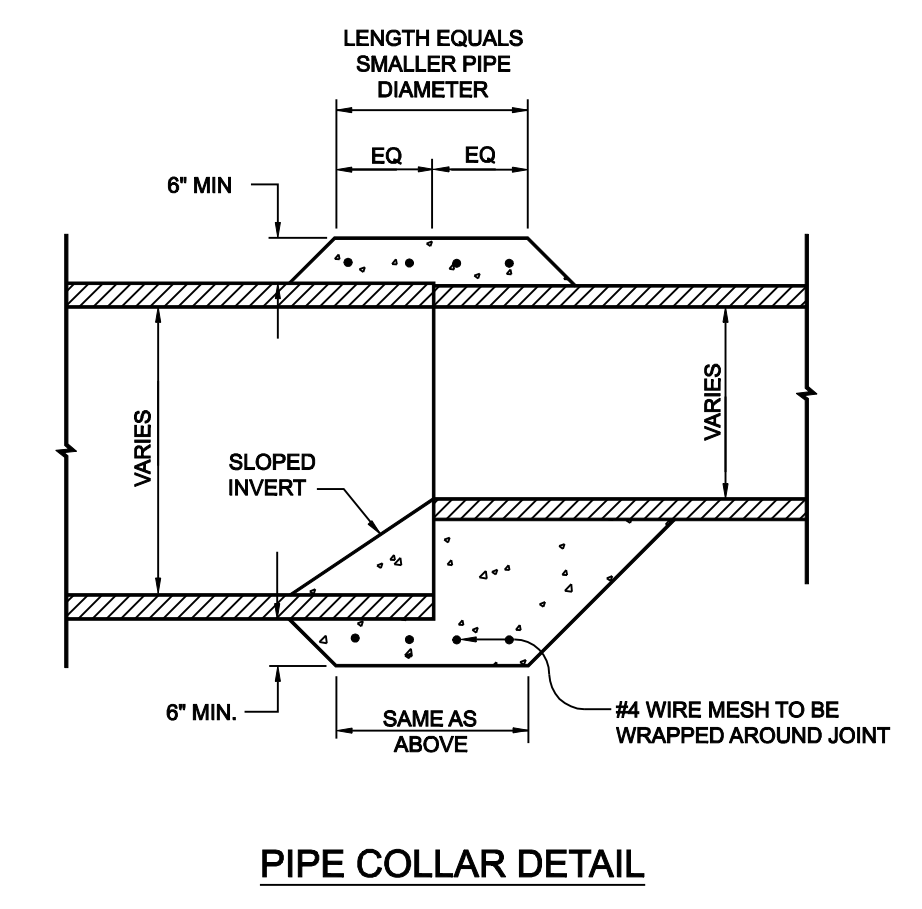
NOTE: ALL JOINTS WILL BE PARALLEL OR PERPENDICULAR TO DIRECTION OF TRAVEL



**NOTE:**  
 DEPTH OF TRENCH BELOW PIPE  
 3" MIN. FOR 27" PIPE & SMALLER  
 4" MIN. FOR 30" TO 60" PIPE  
 6" MIN. FOR 66" PIPE & LARGER



**RCP STORM SEWER PIPE BEDDING**



**NOTES**  
 1. THIS PROCEDURE/DETAIL WILL ONLY BE USED WHEN 1 PREFAB REDUCTION IS NOT POSSIBLE.  
 2. CONCRETE FOR COLLAR WILL NOT BE PAID FOR DIRECTLY, BUT WILL BE CONSIDERED SUBSIDIARY TO THE VARIOUS OTHER BIDS.  
 3. CONCRETE SHALL BE 5 SACK 3000 PSI.

**GENERAL NOTES**

- ALL CONCRETE DRAINAGE STRUCTURES SHALL HAVE A MINIMUM COMPRESSED STRENGTH OF 3600 P.S.I.
- ALL CRUSHED STONE SHALL BE 3/4", PASSING #4 SIEVE.
- ALL FIELD JOINTS WILL BE APPROVED BY THE CITY ENGINEER IF NECESSARY. FIELD JOINTS SHALL BE WIPED ON THE INSIDE AND OUTSIDE TO PROVIDE FOR SMOOTH FLOW OF WATER.
- RAMNECK COMPOUND OR APPROVED EQUAL SHALL BE USED FOR JOINT SEALS.
- ALL STORM SEWER PIPE SHALL BE CAMERA INSPECTED AFTER THE INSTALLATION OF ALL PAVING, UTILITIES, AND PRIOR TO FINAL ACCEPTANCE OF THE PROJECT.



NO.	REVISION	BY	DATE

**Addison!** TOWN OF ADDISON  
 DALLAS COUNTY, TEXAS  
 PAVING, DRAINAGE & UTILITY IMPROVEMENTS  
 BELLA LANE

**STORM DRAIN DETAILS**

<b>icon Consulting Engineers, Inc.</b> Civil Engineers - Designers - Planners		250 W. Southlake Blvd., Suite 117 Southlake, TX 76092 (817) 552-6210	
PROJECT 5029-03	DESIGN ICE	DRAWN ICE	DATE FEB 01, 2011
FILE PW # 2010-08	SHEET 17		

PAVING, DRAINAGE, & UTILITY IMPROVEMENTS - BELLA LANE