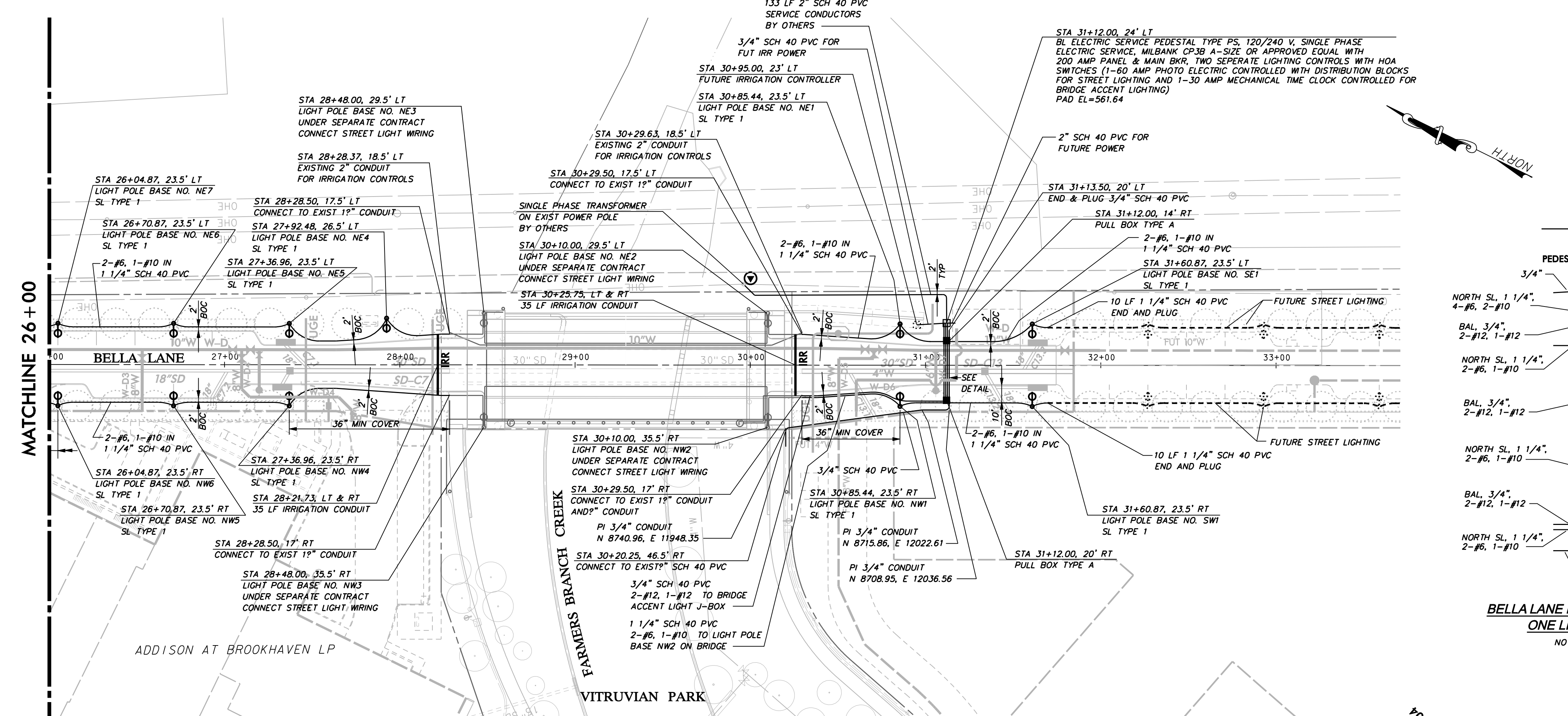


**LEGEND**

- PULL BOX (GROUND BOX)
- PVC CONDUIT (LIGHTING)
- TRANSFORMER ON POLE
- STREET LIGHT - 400W
- STREET LIGHT - FUTURE 400W
- STREET LIGHT - 100W
- STREET LIGHT - FUTURE 100W
- \* PROVIDED BY POWER COMPANY

- STREET LIGHTING & CONDUIT NOTES**
- REFER TO SHEET 3 "GENERAL CONSTRUCTION NOTES, LEGEND AND ABBREVIATIONS" FOR THE GENERAL CONSTRUCTION NOTES FOR THE PROJECT.
  - REFER TO SHEET ED(1)-03 FOR ELECTRIC DETAILS - CONDUIT. RIGID METAL CONDUIT ELBOWS ARE NOT REQUIRED.
  - REFER TO SHEET ED(2)-03 FOR ELECTRIC DETAILS - CONDUCTORS.
  - REFER TO SHEET ED(3)-03 FOR ELECTRIC DETAILS - GROUND BOXES. RIGID METAL CONDUIT ELBOWS ARE NOT REQUIRED. CONCRETE APRON IS NOT REQUIRED.
  - REFER TO SHEET ED(8)-03 FOR ELECTRIC DETAILS - ELECTRICAL SERVICE SUPPORT. PEDESTAL SERVICE TYPE PS. PEDESTAL SERVICE SHALL BE ALUMINUM, COLOR LIGHT GRAY. RIGID METAL ELBOWS ARE NOT REQUIRED.
  - WATER, SANITARY SEWER, AND STORM DRAIN LINES ARE SHOWN FOR REFERENCE ONLY. CONTRACTOR SHALL LOCATE ALL UTILITY LINES IN THE AREA PRIOR TO DIGGING.
  - INSTALL SCHEDULE 40 PVC UNDERGROUND (24" MIN COVER). ALL STREET AND DRIVEWAY CROSSINGS (36" MIN COVER). ALL BENDS TO BE LONG RADIUS.
  - ALL CONDUIT AT POLE BASES TO BE WITHIN THE DRILLED SHAFT FOUNDATION. NO EXPOSED CONDUIT AT POLE BASES WILL BE ALLOWED.
  - SL TYPE 1 - SINGLE 100W 240V MH LUMINAIRE ON 11'-8" POLE, COLOR SILVER- REFERENCE SPECIAL PROVISIONS.
  - CONNECTION TO POWER COMPANY CIRCUITS TO BE MADE ONLY BY POWER COMPANY.
  - UNLESS OTHERWISE INDICATED ALL WORK SHALL CONFORM TO THE 2008 NATIONAL ELECTRICAL CODE (NFPA 70) AND THE 2007 NATIONAL ELECTRICAL SAFETY CODE (ANSI C2).
  - ALL EMPTY CONDUIT INSTALLED FOR FUTURE EXTENSION SHALL BE TURNED UP AND EXTENDED UP TO FINISHED GRADE. CAP ENDS OF ALL CONDUITS. ALL EMPTY CONDUIT SHALL CONTAIN A PULL LINE - 200 LB TEST NYLON.
  - REFER TO REFERENCED SHEETS FOR STREET LIGHTING DETAILS.
  - IRRIGATION SLEEVES "IRR" SHALL CONSIST OF 1-6" SCH 40 PVC AND 1-2" SCH 40 PVC INSTALLED WITH MINIMUM 24" COVER AND EXTENDING 2' BEYOND THE BACKS OF CURB OR EDGE OF PAVEMENT AND UP TO FINISHED GRADE. CAP ENDS OF ALL CONDUITS.
  - STREET LIGHTING BASE AND CONDUIT LOCATIONS ARE CRITICAL FOR COORDINATION WITH FUTURE STREETScape AND ADJACENT PRIVATE IMPROVEMENTS. INSTALL ONLY AT SPECIFIC LOCATIONS PROVIDED.



**WARNING**

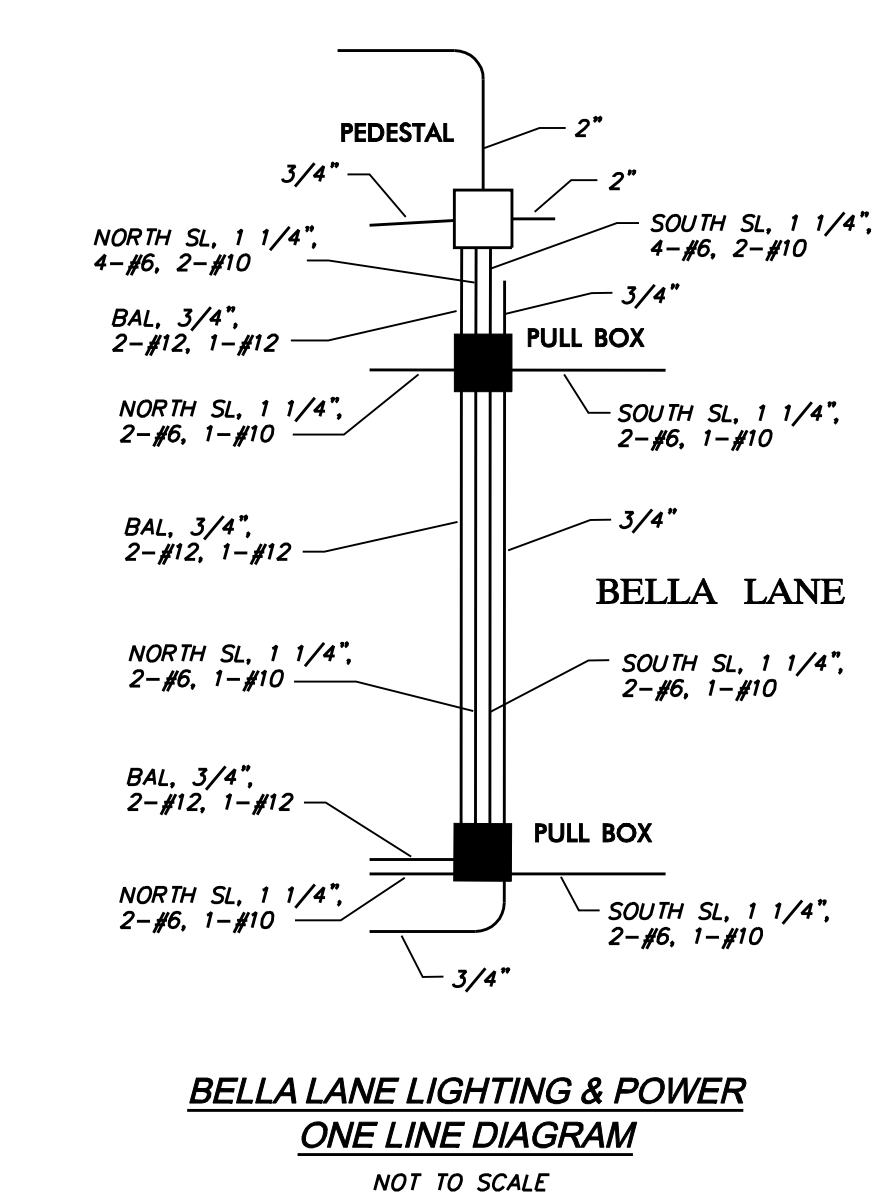
CONTRACTOR IS TO CONTACT TEXAS ONE-CALL SYSTEM (1-800-245-4545) OR OTHER UTILITY LOCATING SERVICES AT LEAST 48 HOURS PRIOR TO CONSTRUCTION ACTIVITIES. ICON CONSULTING ENGINEERS, INC. IS NOT RESPONSIBLE FOR KNOWING ALL EXISTING UTILITIES IN THE PROJECT AREA NOR FOR DEPICTING THE EXACT LOCATIONS OF UTILITIES ON THESE DRAWINGS.

BM #1 REF. ELEVATION = 559.47  
 SQUARE CUT IN TOP OF CURB, SOUTH MEDIAN END NOSE, MARSH LANE 1127' NORTH OF VITRUVIAN WAY

BM #2 REF. ELEVATION = 547.84  
 SQUARE CUT IN TOP OF CURB, NORTH MEDIAN END NOSE, AT INTERSECTION OF VITRUVIAN WAY AND MARSH LANE.

0 20 40 60 80  
 GRAPHIC SCALE IN FEET  
 SCALE: 1"=40'

STATE OF TEXAS  
 BRUCE F. DUNNE  
 62654  
 LICENSED PROFESSIONAL ENGINEER



NO.	REVISION	BY	DATE

**TOWN OF ADDISON**  
 DALLAS COUNTY, TEXAS

**PAVING, DRAINAGE & UTILITY IMPROVEMENTS**  
 BELLA LANE

**STREET LIGHT & CONDUIT PLAN**

<b>icon</b> Consulting Engineers, Inc. Civil Engineers - Designers - Planners	250 W. Southlake Blvd., Suite 117 Southlake, TX 76092 (817) 552-8210				
PROJECT: 5029-03	DESIGN: ICE	DRAWN: ICE	DATE: FEB 01, 2011	FILE: PW # 2010-08	SHEET: 21

RECORD DRAWINGS 06/13/12