

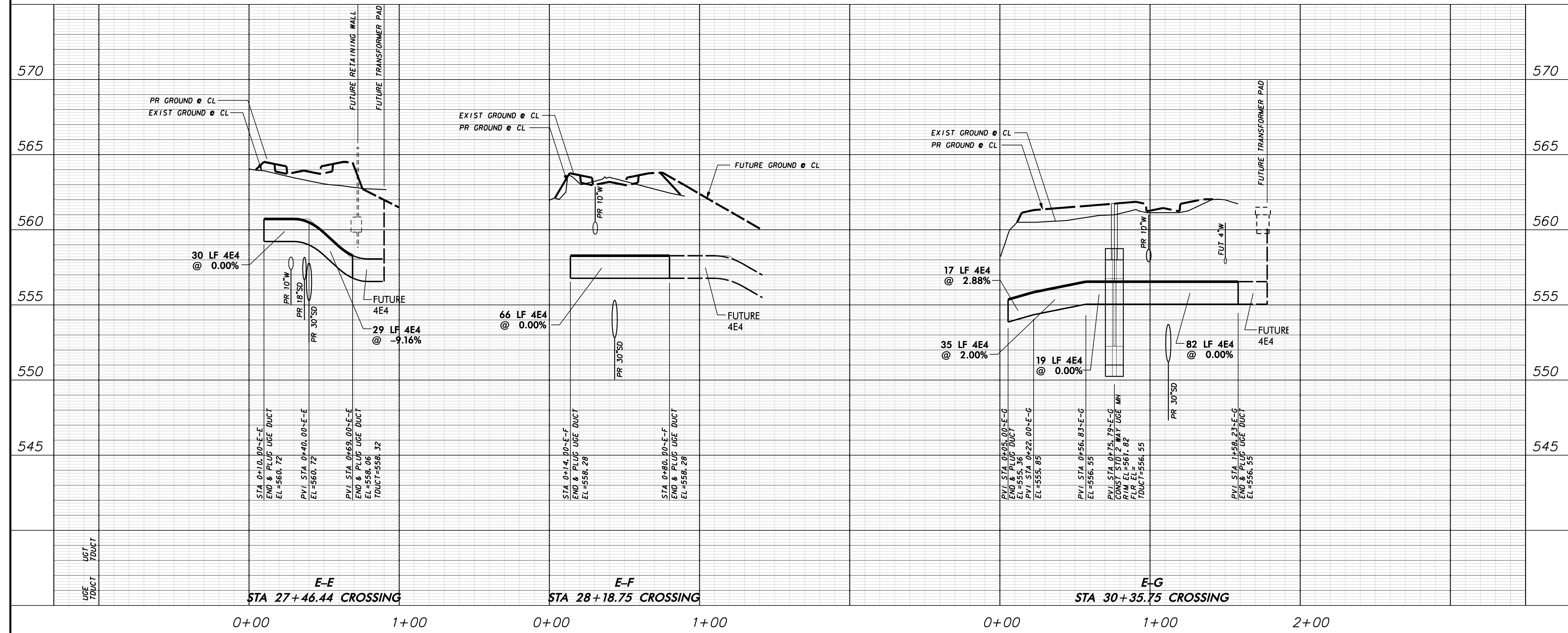
NOTE:
1. SEE OVERALL DUCT BANK LAYOUT SHEET FOR UGE AND UGT GENERAL NOTES.

WARNING

CONTRACTOR IS TO CONTACT TEXAS ONE-CALL SYSTEM (1-800-245-4545) OR OTHER UTILITY LOCATING SERVICES AT LEAST 48 HOURS PRIOR TO CONSTRUCTION ACTIVITIES. ICON CONSULTING ENGINEERS, INC. IS NOT RESPONSIBLE FOR KNOWING ALL EXISTING UTILITIES IN THE PROJECT AREA NOR FOR DEPICTING THE EXACT LOCATIONS OF UTILITIES ON THESE DRAWINGS.

BM #1 REF. ELEVATION = 559.47
SQUARE CUT IN TOP OF CURB, SOUTH MEDIAN END NOSE, MARSH LANE
1127' NORTH OF VITRUVIAN WAY

BM #2 REF. ELEVATION = 547.84
SQUARE CUT IN TOP OF CURB, NORTH MEDIAN END NOSE, AT INTERSECTION OF VITRUVIAN WAY AND MARSH LANE.



NO.	REVISION	BY	DATE

TOWN OF ADDISON
 DALLAS COUNTY, TEXAS

PAVING, DRAINAGE & UTILITY IMPROVEMENTS
BELLA LANE

DUCT BANK PLAN & PROFILE
BELLA LANE CROSSINGS

icon Consulting Engineers, Inc.
 Civil Engineers - Designers - Planners
 250 W. Southlake Blvd., Suite 117
 Southlake, TX 76092 (817) 552-8210

PROJECT	DESIGN	DRAWN	DATE	FILE	SHEET
5029-03	ICE	ICE	FEB 01, 2011	PW # 2010-08	37

RECORD DRAWINGS 06/13/12

PAVING, DRAINAGE, & UTILITY IMPROVEMENTS - BELLA LANE