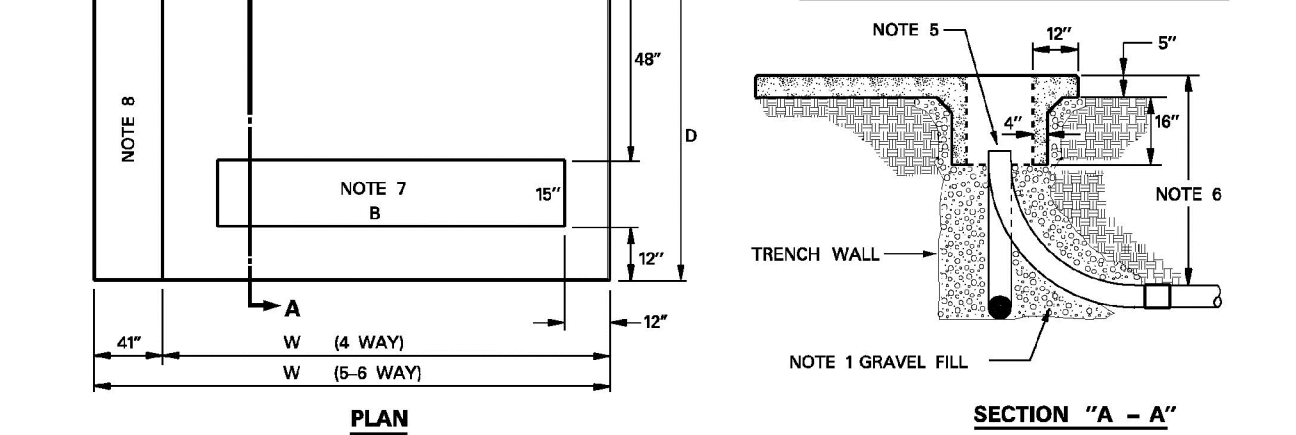


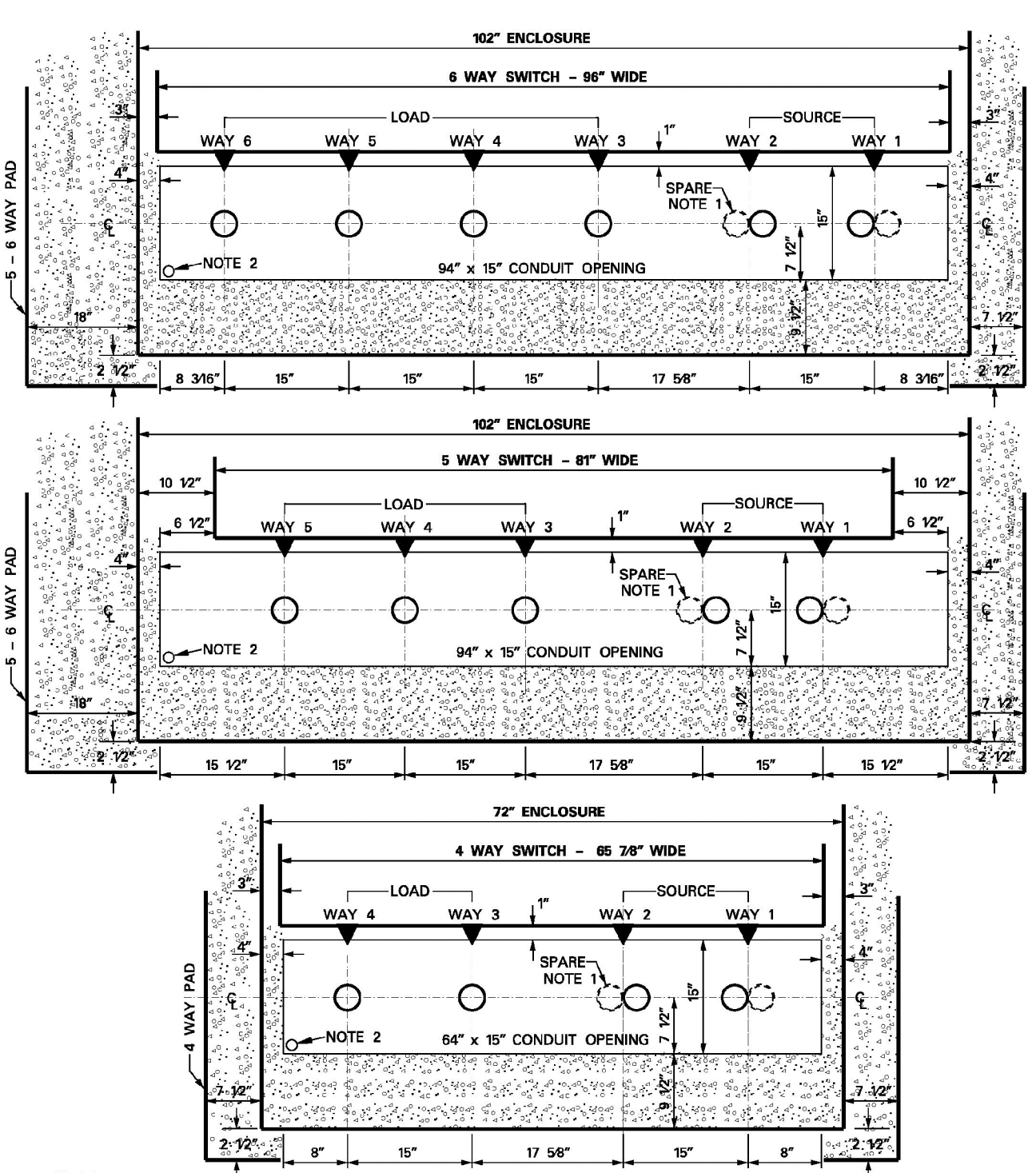
SWITCHGEAR WAYS				
SWITCH	W	B	D	WEIGHT
4-WAY	87	84	75	3750LBS
5-6 WAY	127	12	94	75
4-5 WAY ATO	127	12	94	6488LBS
4-5 WAY RSC	127	12	94	75



- NOTES:
- FOR STABILIZATION AND DRAINAGE INSTALL SMALL TO MEDIUM GRAVEL UNDER PAD DEEP WELL.
 - FOR CLEARANCES ON ALL SIDES OF THE SWITCHGEAR SEE REFERENCE DRAWING 202-100.
 - FOR PIER INSTALLATION SEE DRAWING #205-307.
 - LEFT PAD WITH PROVIDED LIFTING POINTS ONLY. SEE LIFTING RINGS INSIDE WALL OF DEEP WELL.
 - CONDUIT NOT TO EXTEND MORE THAN 3" ABOVE BOTTOM OF DEEP WELL.
 - MINIMUM TRENCH DEPTH AT PAD TO TOP OF CONDUIT FOR THE FOLLOWING CONDUITS:
 6" CONDUIT - 61"
 4" CONDUIT - 47"
 2" CONDUIT - 40"
 - REFER TO STANDARD DWG #205-346 FOR CONDUIT LOCATIONS.
 - ADDITIONAL AREA FOR CONTROL CABINET WHEN MOUNTING ATO (AUTO-TRANSFER) OR RSC (REMOTE SUPERVISORY CONTROLLED) SWITCHGEAR.

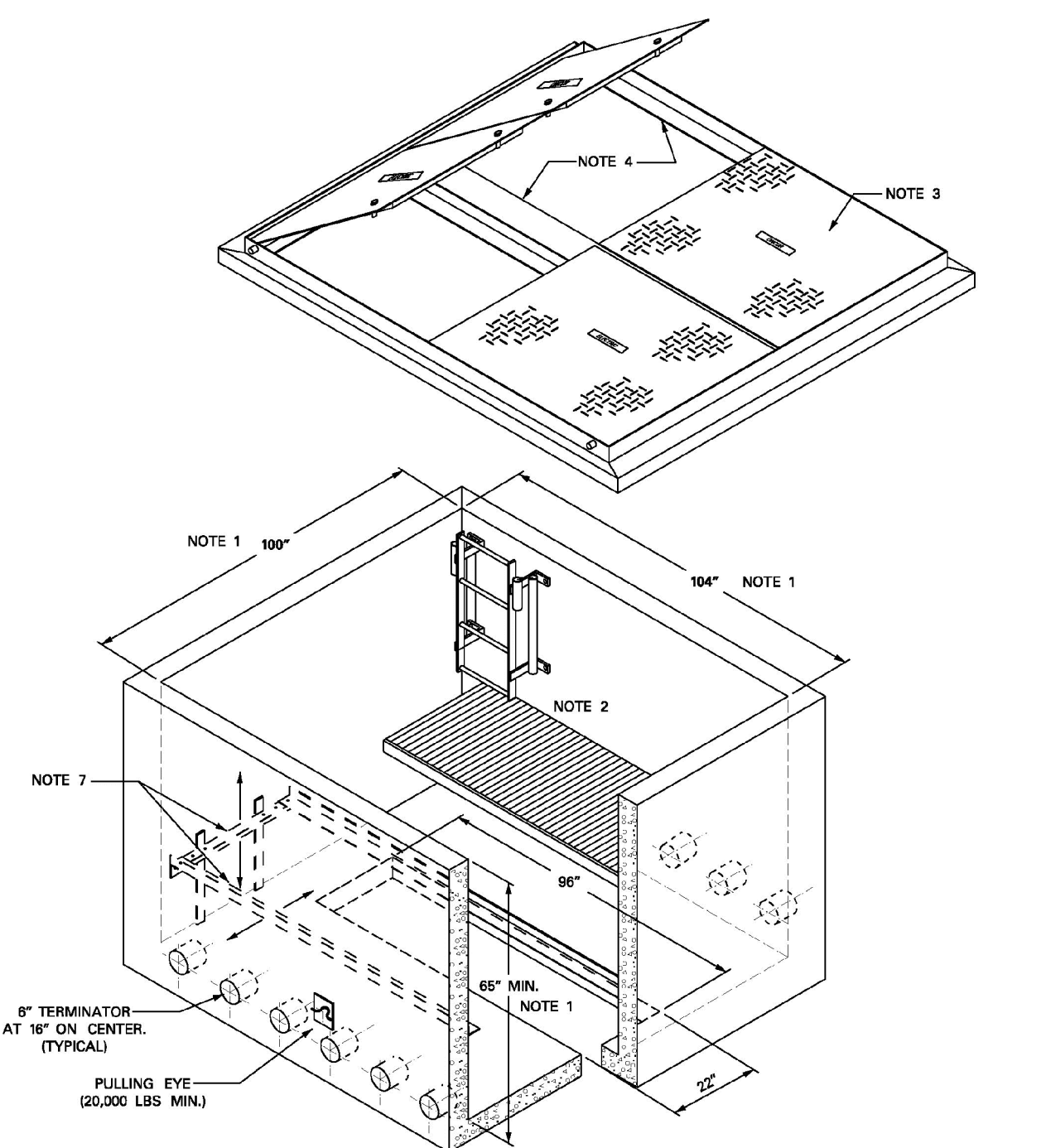
ITEM	QTY	DESCRIPTION	TSN/REF	CU	MU
1	1	PAD, PRECAST, 20" DEEP WELL, 4-WAY DEAD FRONT SWITCHGEAR	462251	PP0W25DF	
2	1	PAD, PRECAST, 20" DEEP WELL, 5-WAY DEAD FRONT SWITCHGEAR	462221	PP0W25DF5	

APPROVED BY



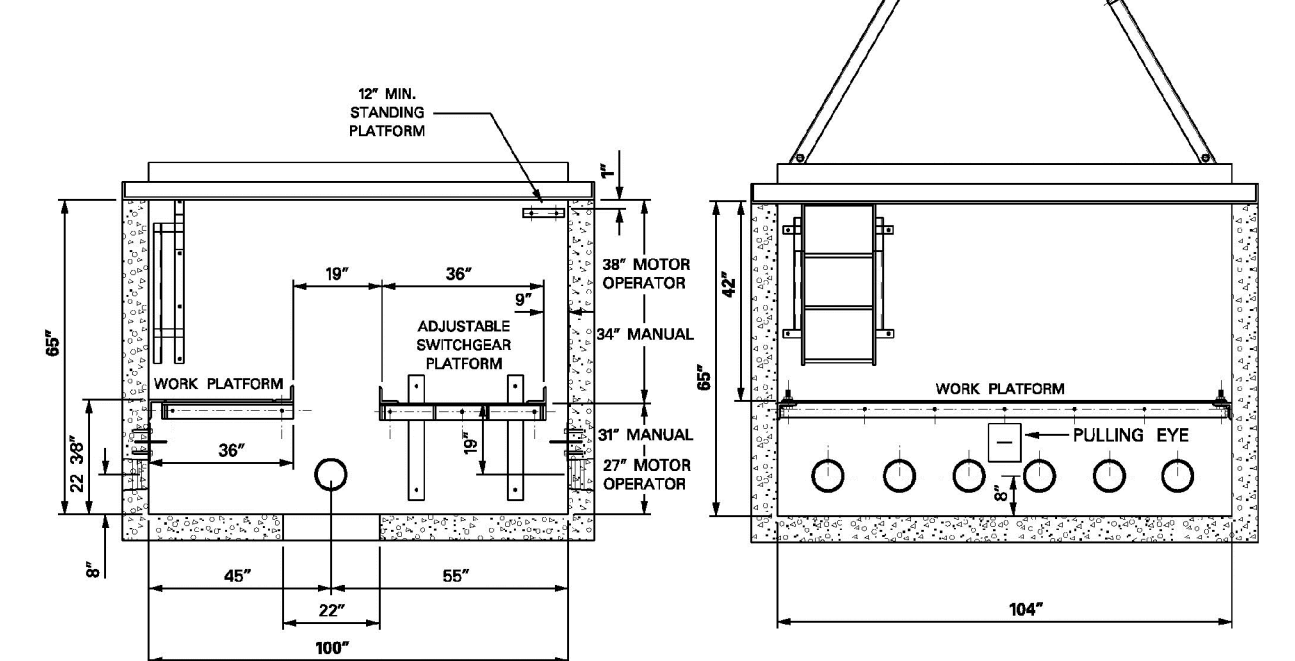
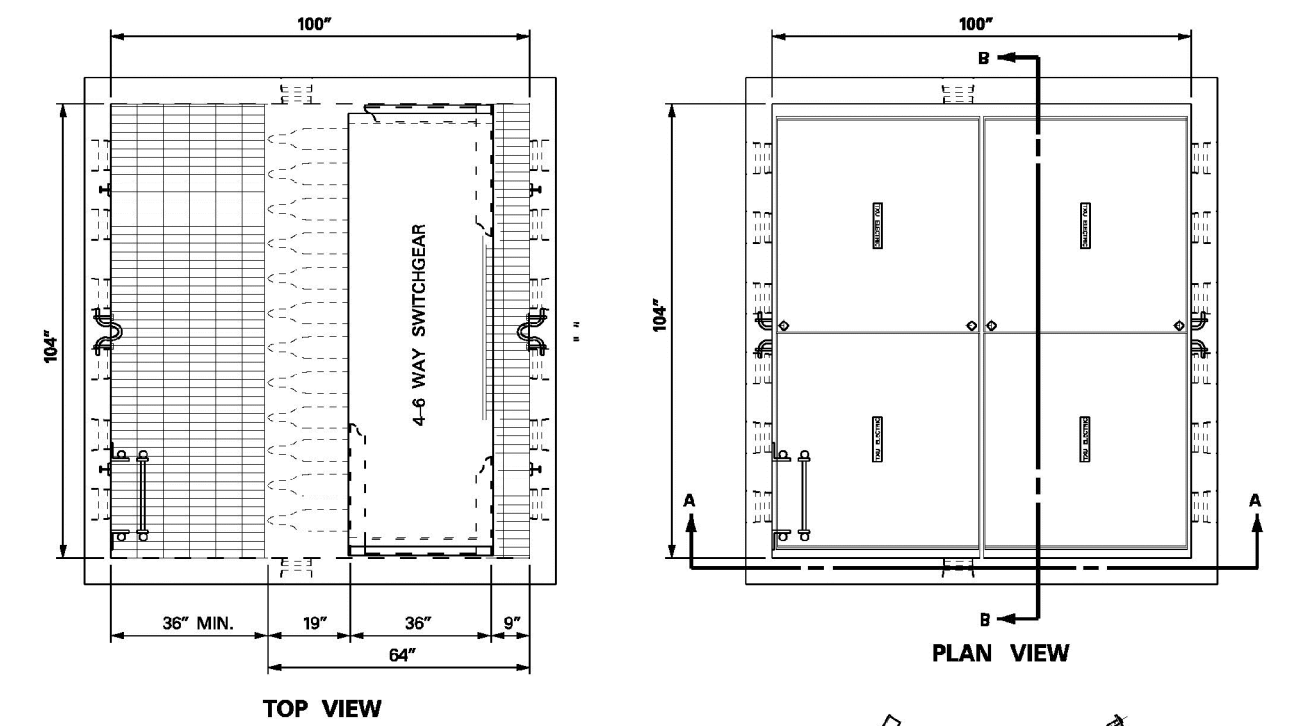
- NOTE:
- CONDUIT SHALL BE CENTERED ON CENTER BUSHING OF EACH SWITCHED WAY. IF SPARE CONDUIT IS REQUIRED BOTH SHALL BE CENTERED AS SHOWN ON CENTER BUSHING OF SWITCHED WAY.
 - FOR PADS PLUMBED INTO DUCT BANKS, INSTALL 3" COMMUNICATION CONDUIT FROM MANHOLE TO FRONT LEFT CORNER OF THE CONDUIT OPENING OF PAD.

APPROVED BY



- NOTE:
- ALL DIMENSIONS SHOWN ARE MINIMUM INSIDE MEASUREMENTS. CONTACT DISTRIBUTION STANDARDS FOR ACTUAL MFG DIMENSIONS.
 - LADDER PLATFORMS SUPPORT ANGLES AND COVER ARE PRE-INSTALLED.
 - NON-METALLIC TORSION ASSISTED COVERS.
 - REMOVABLE COVER AND SUPPORT BEAM.
 - VERTICAL LOADS TO COVER SHALL NOT EXCEED 16,000LBS LIVE WHEEL WEIGHT.
 - VAULTS SHALL NOT BE INSTALLED IN LOCATIONS DESIGNATED ACCESSIBLE BY VEHICULAR TRAFFIC.
 - FOURWAY ADJUSTABLE SWITCHGEAR PLATFORM.
 - SEE ONCOR DISTRIBUTION SPECIFICATION #311-220 FOR ADDITIONAL INFORMATION.

APPROVED BY



ITEM	QTY	DESCRIPTION	TSN/REF	CU	MU
1	1	VAULT, PRE-CAST, SUBSURFACE, 4-WAY DF SWITCHGEAR	457111	WALLTSWGR	
2	1	DRIVEN GROUND (2) OF SWITCHGEAR		GD5F	MNSWR
3					

APPROVED BY

NO.	REVISION	BY	DATE

TOWN OF ADDISON
DALLAS COUNTY, TEXAS
PAVING, DRAINAGE & UTILITY IMPROVEMENTS
BELLA LANE

DUCT BANK ELECTRIC DETAILS

icon Consulting Engineers, Inc.				
Civil Engineers - Designers - Planners		250 W. Southlake Blvd., Suite 117 Southlake, Tx 76092 (817) 552-6210		
PROJECT	DESIGN	DRAWN	DATE	SHEET
5029-03	ICE	ICE	FEB 01, 2011	39

PAVING, DRAINAGE, & UTILITY IMPROVEMENTS - BELLA LANE