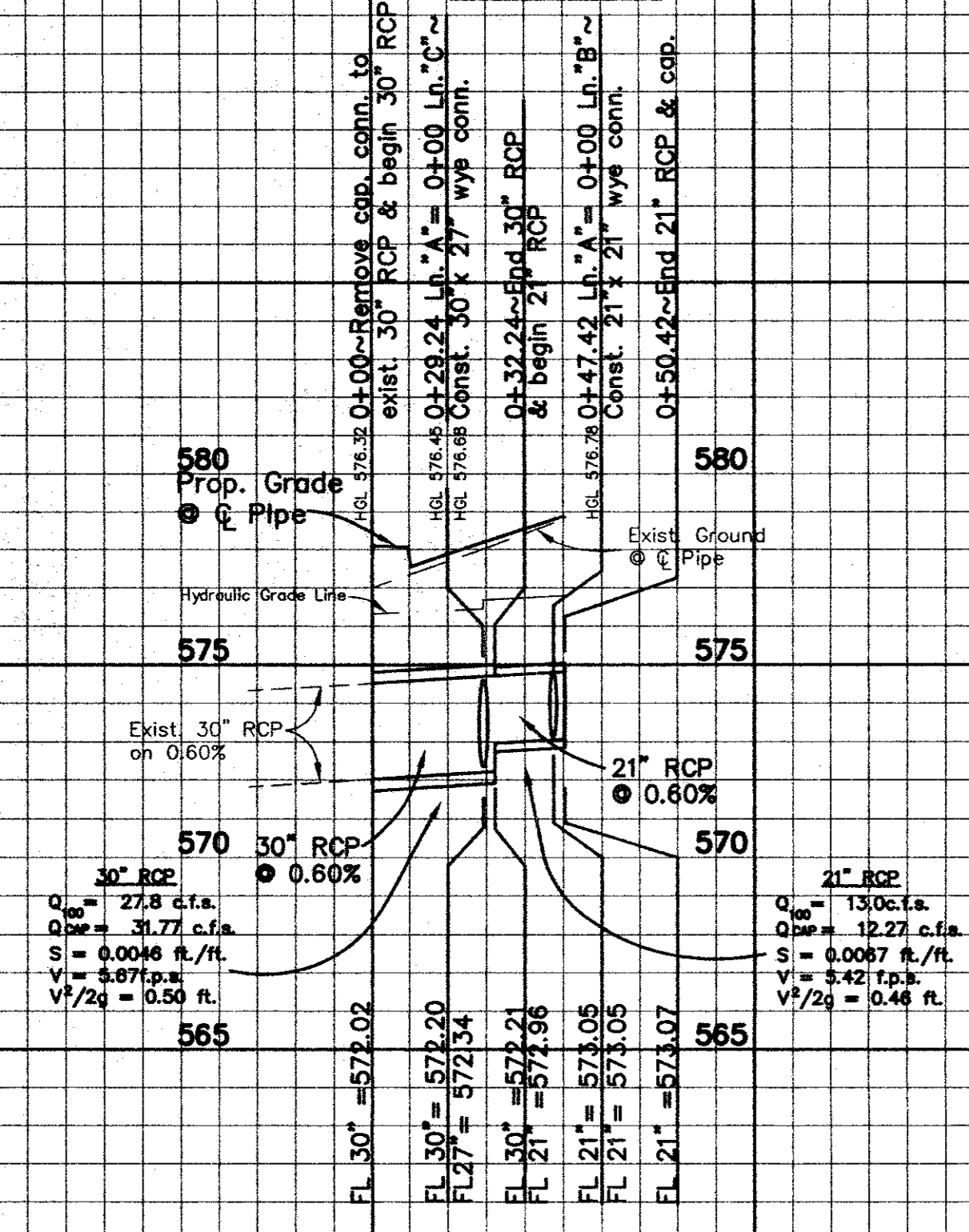
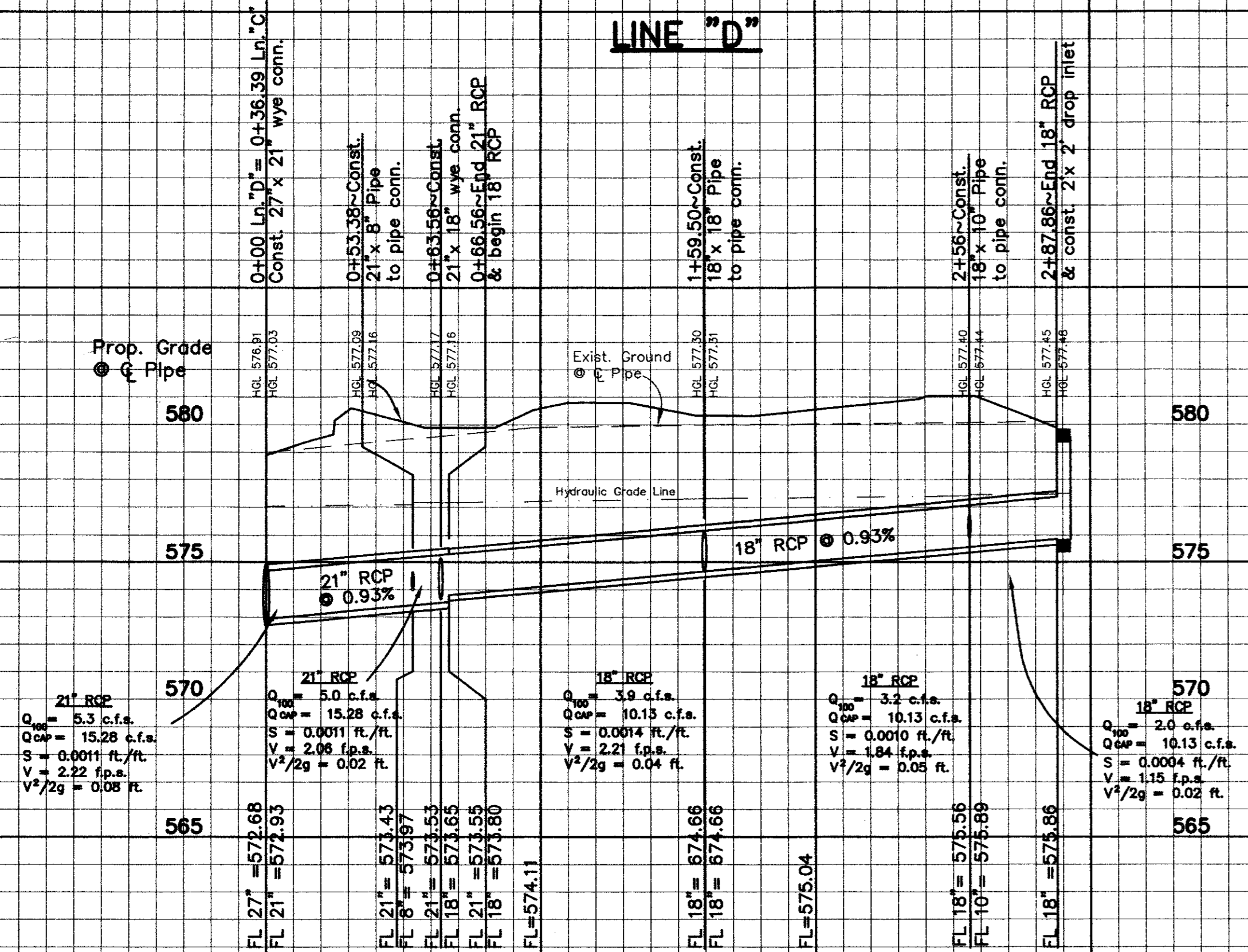


0+00 **LINE "A"** 1+00

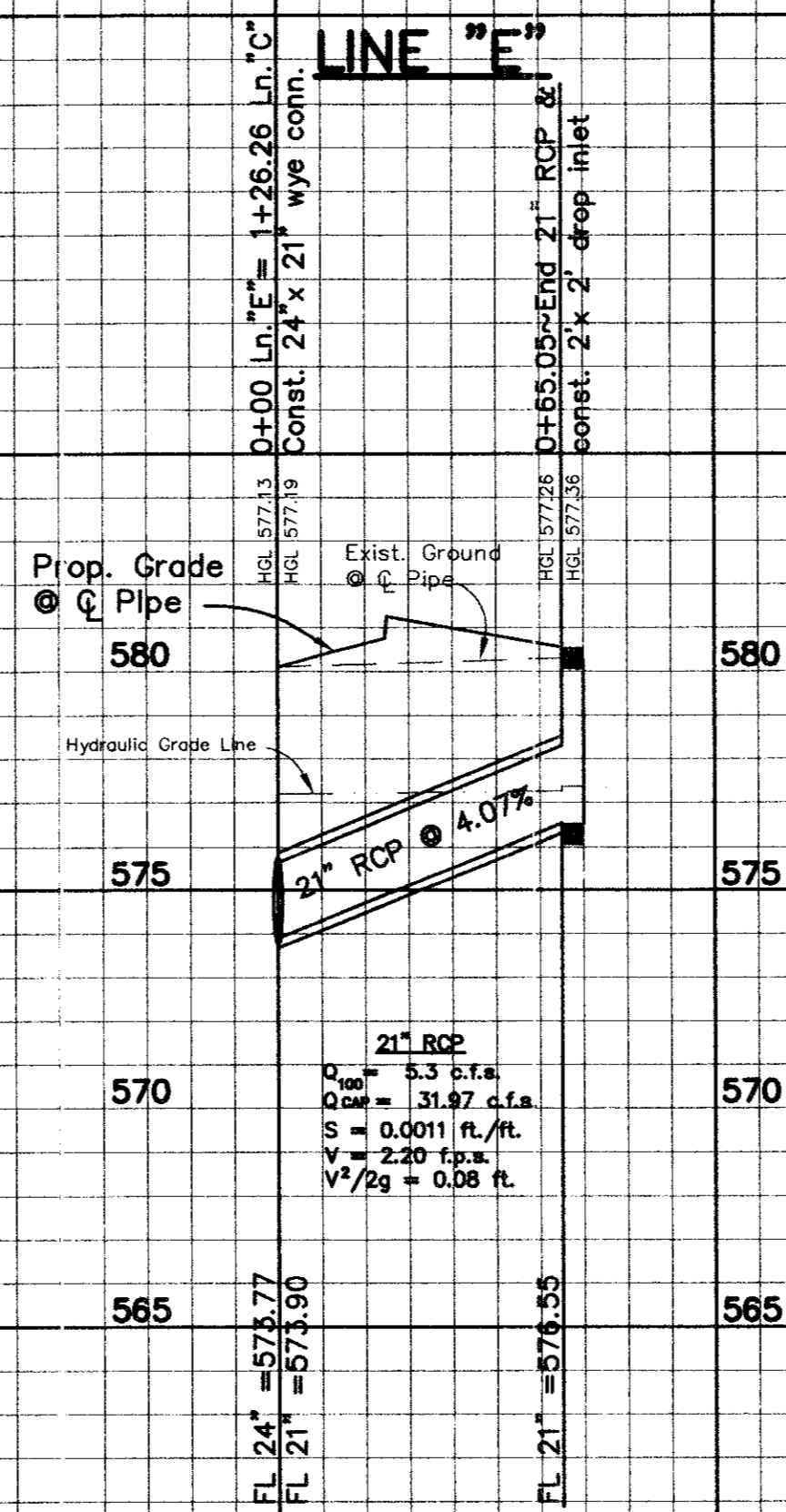


0+00 1+00 2+00 3+00

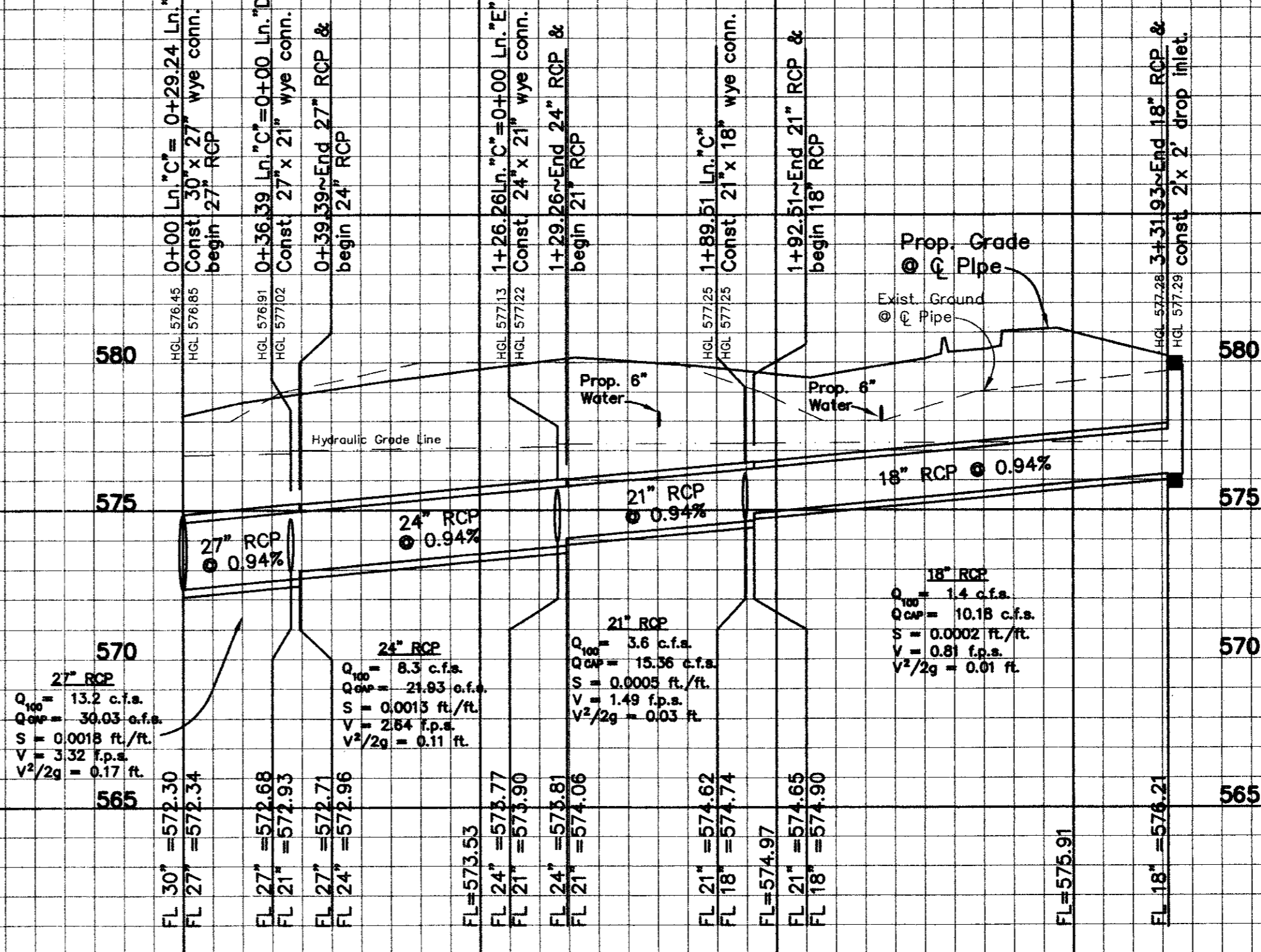
LINE "D"



LINE "E"



1+00 **LINE "C"** 2+00 3+00



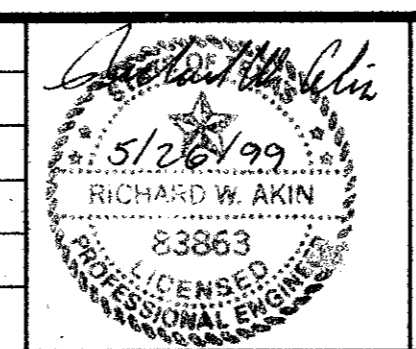
RECORD DRAWING
 THIS DRAWING HAS BEEN REVIEWED
 AND APPROVED FOR THE RECORD
 CONSTRUCTION OF THE
 PROJECT IN THE YEAR OF THE
 CONTRACT. ELEVATIONS SHOWN ON
 THIS DRAWING ARE FIELD VERIFIED.

JONES & BOYD, INC.
 BY: [Signature]
 DATE: 2/11/09

NOTE:
 PVC PIPE OF CLASS 150 OR BETTER MAY BE USED IN PLACE OF RCP
 FOR STORM SEWER.

- BENCHMARK :
- SQUARE CUT ON TOP OF CURB INLET AT NORTHEAST CORNER OF INTERSECTION OF BUSINESS AVE. AND BELTLINE ROAD. ELEVATION = 577.59'
 - "X" AT INLET ON TOP OF CURB WEST SIDE OF BUSINESS AVE. 200' +/- NORTH OF BELTLINE ROAD. ELEVATION = 578.57'

NO.	REVISIONS DURING CONSTRUCTION	BY	DATE	NO.	REVISIONS DURING PLAN REVIEW	BY	DATE



Jones & Boyd, Inc.
 16800 Dallas Parkway, Suite 240
 Dallas, Texas 75248
 Tel: 972-248-7676
 Fax: 972-248-1414

- Engineering
- Planning
- Landscape Architecture
- Surveying

STORM SEWER PROFILES

SUITES OF AMERICA

TOWN OF ADDISON,
 DALLAS COUNTY, TEXAS

PROJECT NO.	BG403
SHEET NO.	C6