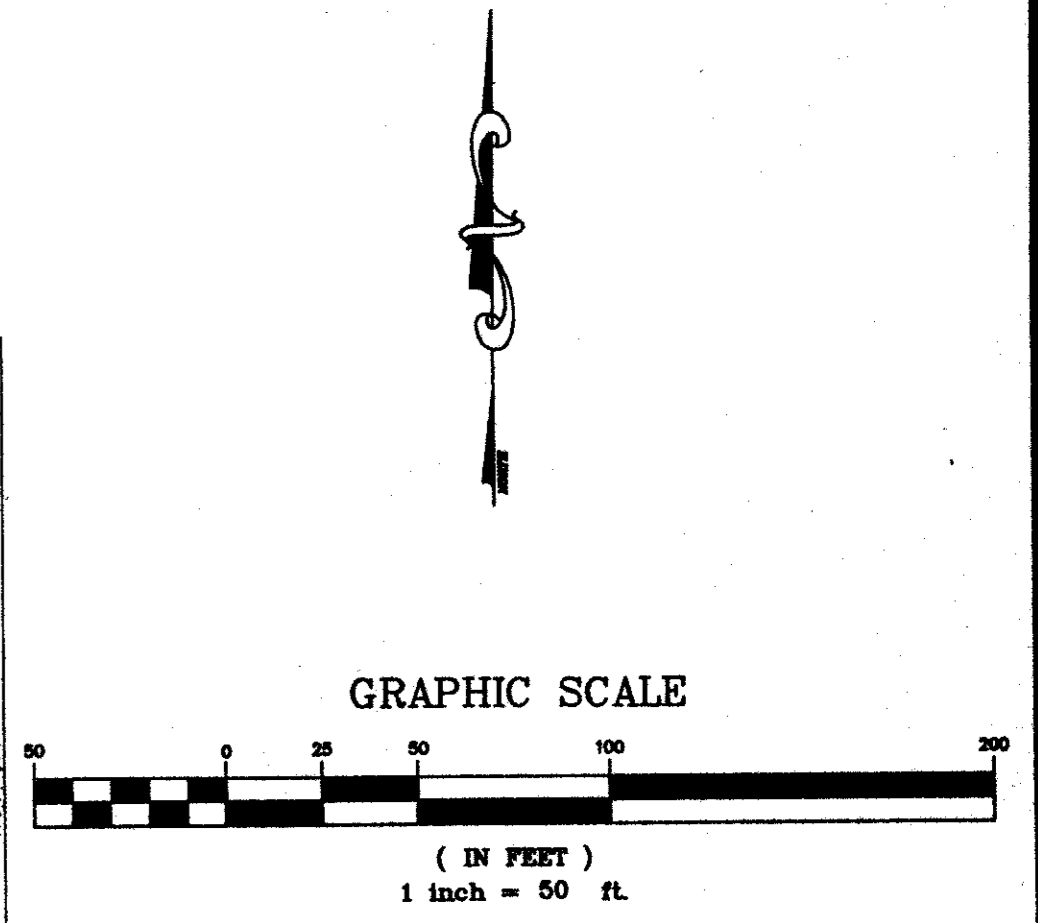
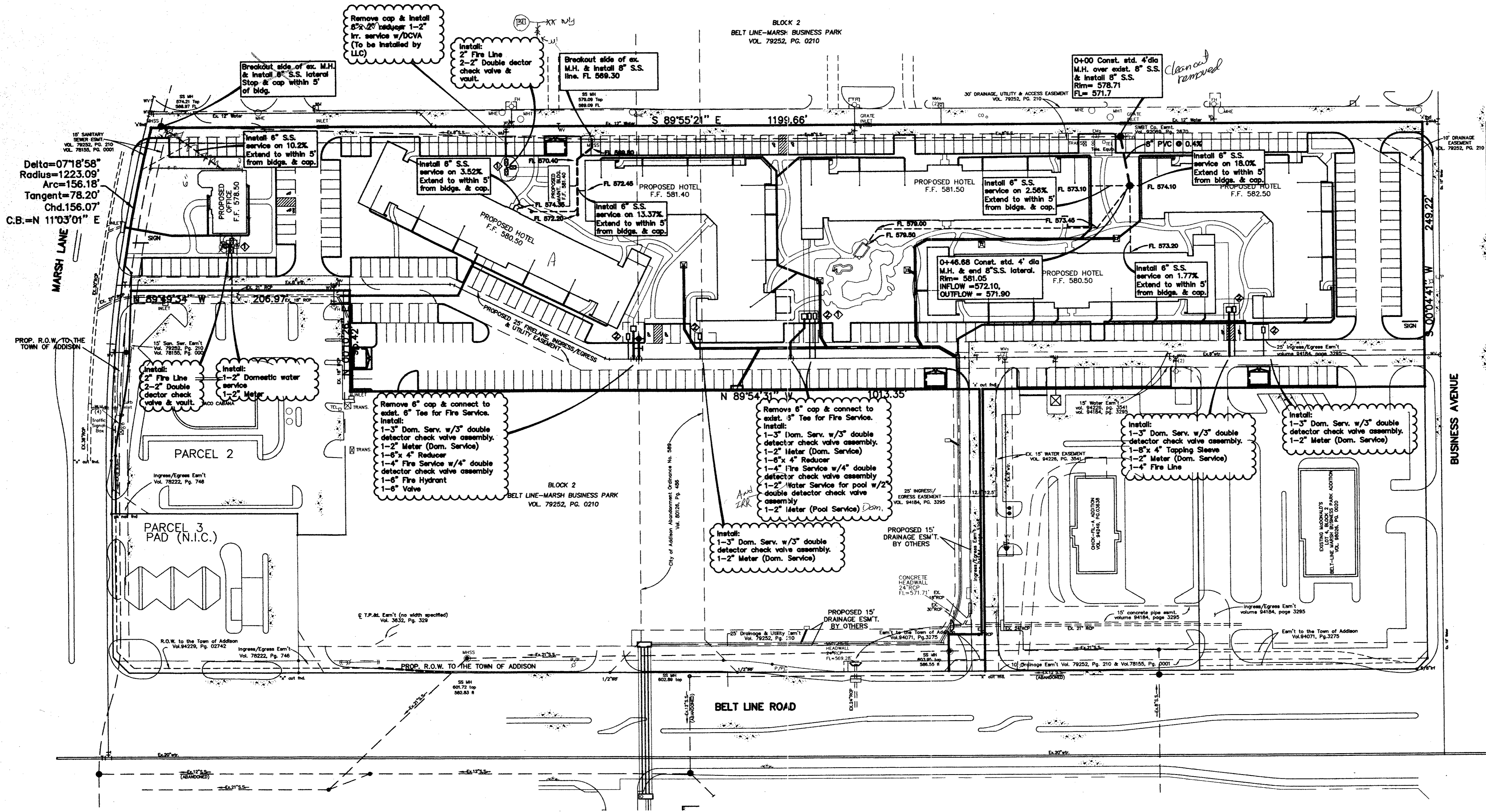


BLOCK 2
BELT LINE-MARSH BUSINESS PARK
VOL. 79252, PG. 0210



GENERAL NOTES

1. All water main pipe fittings will be in accordance with "Standard Specifications for Public Works Construction" as modified by the City of Addison Special Provisions.
2. All water mains shall have a minimum cover as follows: 6" - 42", 8" - 48", 12" - 54" or as required to clear utilities.
3. All water services will consist of a minimum 2" compression fitting composite stop (AWWA C-500), 2" minimum type "K" copper tubing, 2" minimum compression fitting angle stop, and meter box, unless otherwise shown on the plans. Angle stops will be located within the meter box and facing toward the building per City of Addison Standard Construction Details.
4. All ductile iron fittings shall be of mechanical joint type or slip joint type and shall be Class D or Class 250 on sizes 12" or smaller in accordance with AWWA Specification C-110-64 and Specification C-111-64.
5. Water taps of 2" or less on existing mains will be made by the City forces. Sanitary sewer taps of 4" on existing mains will be made by City forces.
6. Fire hydrants shall be approved by the City Engineer.
7. Fire Sprinkler line shall be sized and installed by a state licensed fire sprinkler contractor.
8. Fire hydrants shall be placed 2.5 feet from the back of curb as shown on the plan.
9. Fire hydrant bonnets and caps will be painted to conform to the State Insurance color coding. Paint used for painting City fire hydrants will meet City Specifications.
10. Gate valves will be resilient seat conforming to AWWA C-509 and City of Addison Special Provisions.
11. Valves will be in the closed position on stub outs installed for future service.
12. SDR 35 PVC pipe shall be used for sanitary sewer.
13. Contractor shall verify location and elevation of all existing utilities and notify the Engineer of any discrepancies.
14. All manholes, cleanouts, valve boxes, fire hydrants, etc. must be adjusted to proper line and grade by the Contractor after placing of permanent pavement.
15. Unless otherwise noted, all materials and construction will conform to the "Standard Specifications for Public Works Construction for North Central Texas", with Amendments and the City of Addison Special Provisions.
16. In the event an item is not covered in the Specifications, the City Engineer's decision will apply.
17. Any water or sanitary sewer service located outside of a street, alley, or easement shall be installed by a plumber and be inspected by Code Enforcement. All installation shall be in accordance with City Code Enforcement regulations.
18. Concrete encasement at utility crossings shall be 9 feet on either side of the lowest crossing pipe.
19. Trench excavation for trenches 5 feet or more in depth shall be in accordance with all provisions of Part 1928, Subpart P - "Excavations, Trenching, and Shoring of the Occupational Safety and Health's Standards and Interpretations. It shall be the responsibility of the Contractor to conform to the above provisions.
20. A blue Stimsonite, Fire-Lite reflector or approved equal shall be placed in the center of the fire lane opposite fire hydrants.
21. All sanitary sewer manholes shall be constructed so the top of the cone is 8 inches below the top of the manhole elevation on the profiles. Manholes shall be adjusted to finish pavement grade, with approved adjustment rings, at the time of paving.
22. All water & sewer services & fire lines to building are shown to within 5' of the buildings. Limits of Site work Utility Contractor's work shall be to 5' of the buildings. Meter box location where adjacent to buildings shall be coordinated with General Contractor.
23. Fire line shall be sized & installed by a licensed Fire Protection Contractor.
24. All water mains 12-inch in diameter and under shall be ductile iron or AWWA C900 PVC, mechanical joint, or a joint of the type which provides a recession in the bell for the employment of a single rubber gasket to be placed before the insertion of the succeeding spigot. Joint material for PVC shall conform to ASTM F477. Tracer wire shall be installed over all PVC mains.

RECORD DRAWING
THIS DRAWING HAS BEEN REVISOR TO REFLECT THE LATEST REVISIONS TO THE ORIGINAL DRAWING. ALL CHANGES AND FIELD REVISIONS OF THE CONTRACTOR SHALL BE SHOWN ON THIS DRAWING. THESE ARE NOT FIELD VERIFIED.
JONES & BOYD, INC.
DATE: 2/11/00

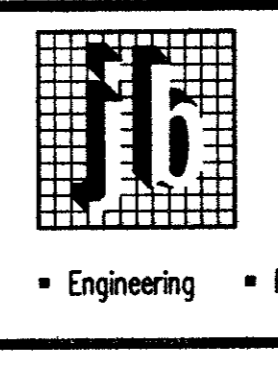
WATER METER TABLE						
I.D. NO.	QUANTITY	SERVICE SIZE	METER SIZE	DOMESTIC	IRRIGATION	SAN. SWR.
1	2	2"	2"	X		6"
2	5	3"	2"	X		6"
3	1	2"	2"		X	N/A

Note:
All Fire Service Lines to buildings are 4" unless otherwise noted on the plan.

BENCHMARK:
1. SQUARE CUT ON TOP OF CURB INLET AT NORTHEAST CORNER OF INTERSECTION OF BUSINESS AVE. AND BELTLINE ROAD. ELEVATION = 577.59'
2. "X" AT INLET ON TOP OF CURB WEST SIDE OF BUSINESS AVE. 200' +/- NORTH OF BELTLINE ROAD. ELEVATION = 578.57'

NO.	REVISIONS DURING CONSTRUCTION	BY	DATE	NO.	REVISIONS DURING PLAN REVIEW	BY	DATE
1	ADDED 2" FIRE LINE TO MAINT. BLDG. AND OFFICE BLDG.	SWY	11/9/99	1	ADDED MAINTENANCE BLDG.	RWA	5/25/99

REVISIONS



Jones & Boyd, Inc.
16800 Dallas Parkway, Suite 240
Dallas, Texas 75248
Tel: 972-248-7676
Fax: 972-248-1414

Engineering • Planning • Landscape Architecture • Surveying

WATER & SANITARY SEWER PLAN
SUITES OF AMERICA
TOWN OF ADDISON,
DALLAS COUNTY, TEXAS

PROJECT NO.
BG403
SHEET NO.
C7