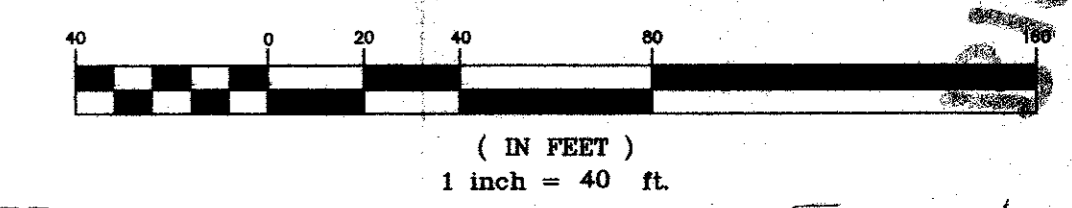
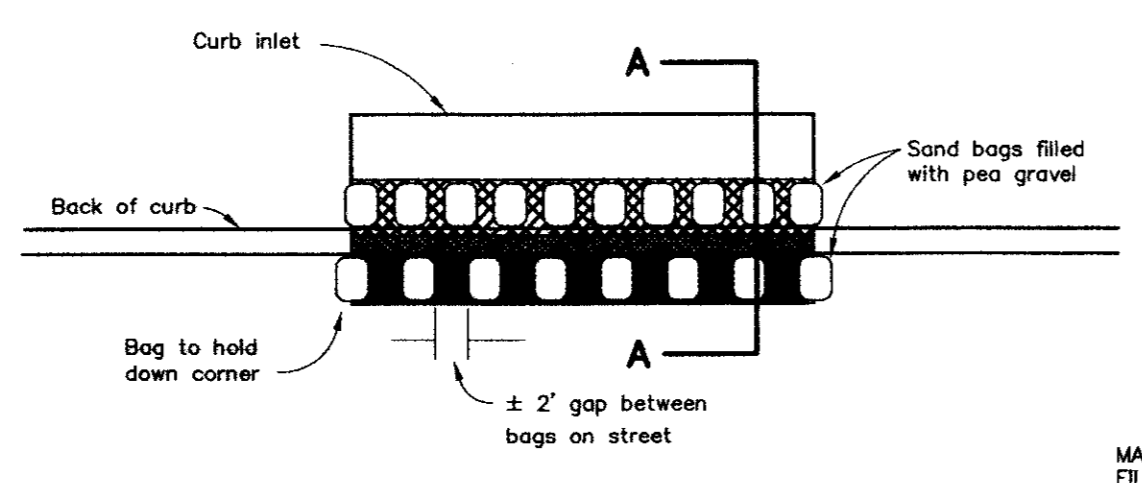
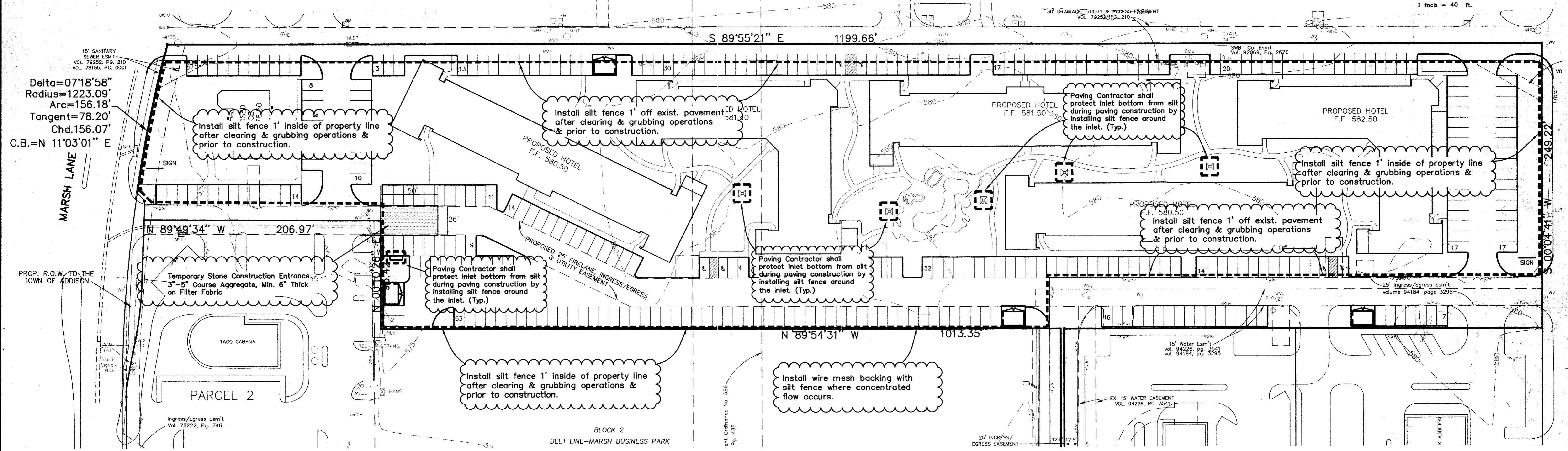


BLOCK 2  
BELT LINE-MARSH BUSINESS PARK  
VOL. 79252, PG. 0210

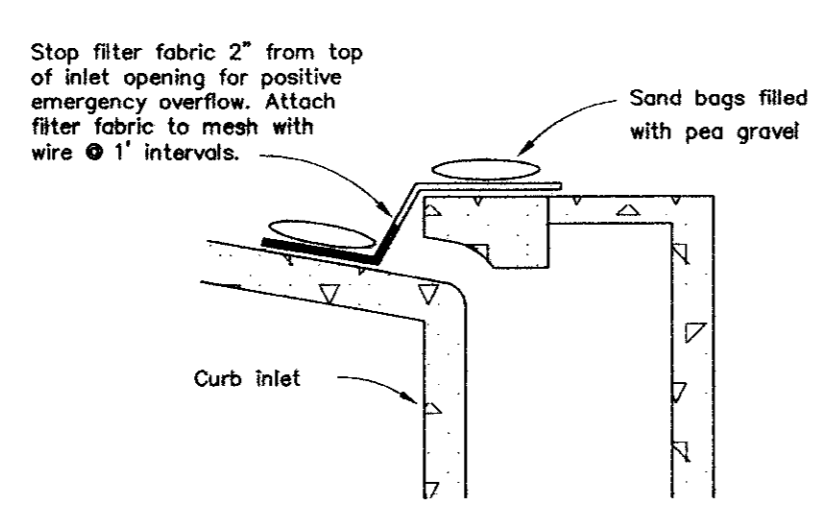
GRAPHIC SCALE



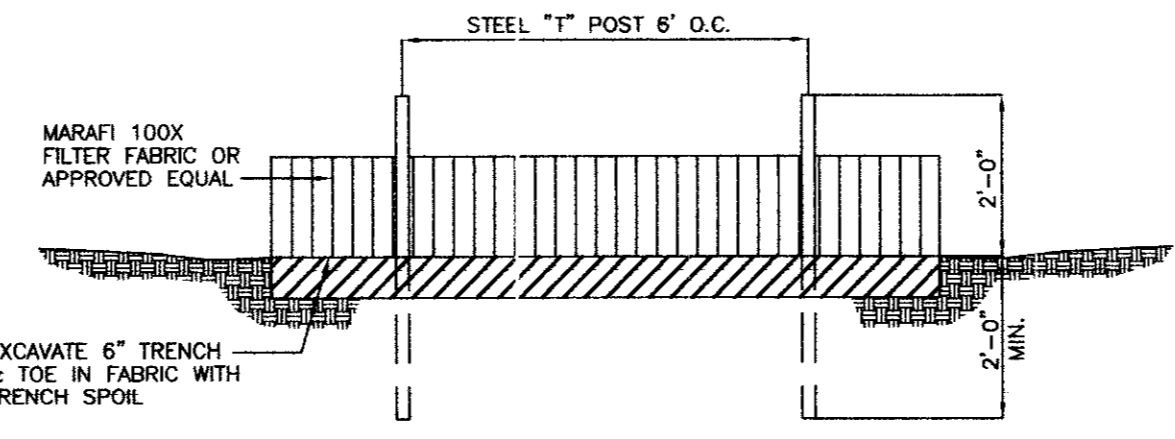
Delta=07°18'58"  
Radius=1223.09'  
Arc=156.18'  
Tangent=78.20'  
Chd.156.07'  
C.B.=N 11°03'01" E



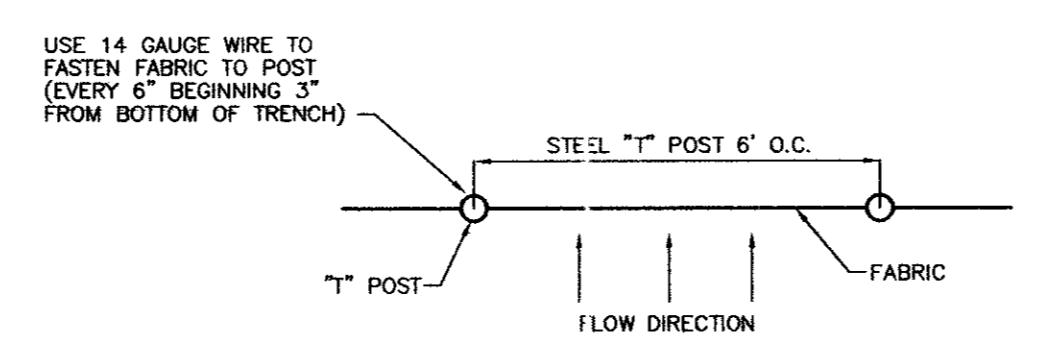
**INLET EROSION PROTECTION**  
PLAN VIEW  
N.T.S.



**SECTION A-A**  
N.T.S.



**ELEVATION**  
N.T.S.



**PLAN VIEW SILT FENCE DETAIL**  
N.T.S.

- SILT FENCE GENERAL NOTES:**
- Steel posts which support the silt fence shall be installed on a slight angle toward the anticipated runoff source.
  - The toe of the silt fence shall be trenched in with a spade or mechanical trencher, so that the downslope face of the trench is flat and perpendicular to the line of flow.
  - The trench should be a minimum of six inches deep and four inches wide to allow for the silt fence to be laid in the ground and backfilled.
  - Silt fence should be securely fastened to each support post.
  - Inspection shall be frequent and repair or replacement shall be made promptly as needed.
  - Silt fence shall be removed when it has served its usefulness, so as not to block or impede storm flow or drainage.
  - Sediment trapped by this practice shall be disposed of in an approved site in a manner that will not contribute to additional siltation.
  - Accumulated silt shall be removed when it reaches a depth of six inches and disposed of in an approved spoil site or as in No. 7 above.
  - At point of surface flow concentration reinforce silt fence with wire mesh backing on downstream side of fence.
  - Filter fabric is to be Marafi 100X or approved equal. (Marafi, Inc.: 800-438-1855)

RECORD DRAWING  
THIS DRAWING HAS BEEN REPRODUCED  
FOR THE CITY OF ADDISON  
DATE: 2/1/00  
CMB/MA

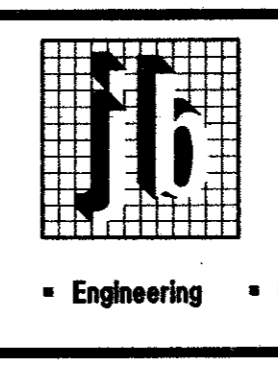
**LEGEND**

- Silt Fence
- Inlet w/ Erosion protection

- BENCHMARK :**
- SQUARE CUT ON TOP OF CURB INLET AT NORTHEAST CORNER OF INTERSECTION OF BUSINESS AVE. AND BELTLINE ROAD. ELEVATION = 577.59'
  - "X" AT INLET ON TOP OF CURB WEST SIDE OF BUSINESS AVE. 200' +/- NORTH OF BELTLINE ROAD. ELEVATION = 578.57'

NO.	REVISIONS DURING CONSTRUCTION	BY	DATE	NO.	REVISIONS DURING PLAN REVIEW	BY	DATE

5/28/99  
RICHARD W. AKIN  
83863  
LICENSED PROFESSIONAL ENGINEER



**Jones & Boyd, Inc.**  
18000 Dallas Parkway, Suite 240  
Dallas, Texas 75248  
Tel: 972-248-7878  
Fax: 972-248-1414  
Engineering • Planning • Landscape Architecture • Surveying

**EROSION CONTROL PLAN**  
SUITES OF AMERICA  
CITY OF ADDISON,  
DALLAS COUNTY, TEXAS

PROJECT NO.  
**BG403**  
SHEET NO.  
**C8**