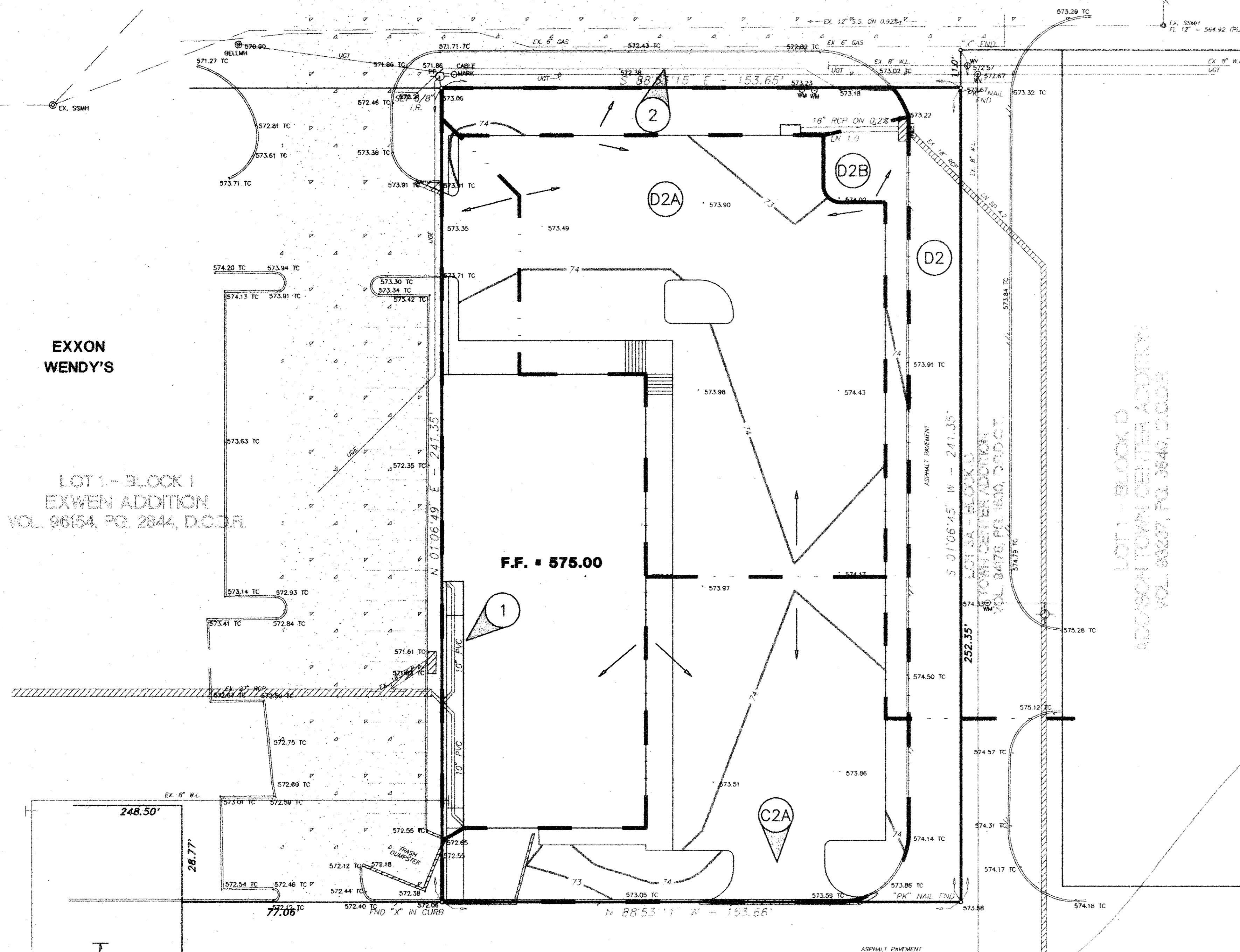


# BELT LINE ROAD

(111' DEDICATED PUBLIC RIGHT-OF-WAY)

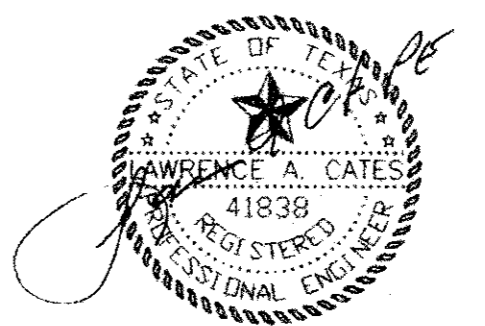
### DRAINAGE CALCULATIONS RATIONAL METHOD $Q = CxIxA$

DRNG. NO.	ACRES	RUNOFF COEF.	I100 (IN/HR)	Q100 (cfs)	REMARKS
1	0.22	0.9	8.74	1.7	ROOF DRAINS TO EX. 27" RCP
2	0.04	0.5	8.74	0.2	SHEET FLOW TO R.O.W.
D2A	0.26	0.9	8.74	2.0	5' C.I.
D2B	0.03	0.5	8.74	0.1	SHEET FLOW TO D.A. D2
D2	0.21	0.9	8.74	1.7	EXIST. 6' C.I.
C2A	0.19	0.9	8.74	1.5	TO D.A. C2
C2	2.64	0.9	8.74	20.8	TO EXIST. 20' C.I.



**AS BUILT**  
DATE 18 Jun 93

THE SEAL APPEARING ON THIS DOCUMENT WAS AUTHORIZED BY LAWRENCE A. CATES, P.E. 41838 ON 10/7/97



**BENCH MARK:**  
N.W. CORNER OF EXISTING CURB INLET LOCATED ON THE SOUTH SIDE OF BELT LINE ROAD. INLET LOCATED 575' WEST OF THE INTERSECTION OF BELT LINE ROAD AND BUSINESS AVENUE.  
ELEV. 573.06'

APPROX. LIMITS OF FULLY DEVELOPED CONDITIONS 100 YEAR FLOOD PLAIN VOLUME 93237, PAGE 3840

APPROXIMATE LIMITS OF 100 YR. FLOOD

LOT 3A - BLOCK D  
TOWN CENTER ADDITION  
VOL. 8476 PG. 630, D.H.D.C.

**KMART**

REV.	DATE	REMARKS				
<b>DRAINAGE AREA MAP</b>						
LOT 2, BLOCK 1 - EXWEN ADDITION						
ADDISON TOWN CENTER						
ADDISON, TEXAS						
LAWRENCE A. CATES & ASSOC., INC. 14200 MIDWAY ROAD, SUITE 122 (972) 385-2272		CONSULTING ENGINEERS DALLAS, TEXAS				
DESIGN	DRAWN	DATE	SCALE	NOTES	FILE	NO.
LAC	LAC	5/14/97	1"=20'	D.P.	97028 DMAP	C-8

10/7/97  
LAC