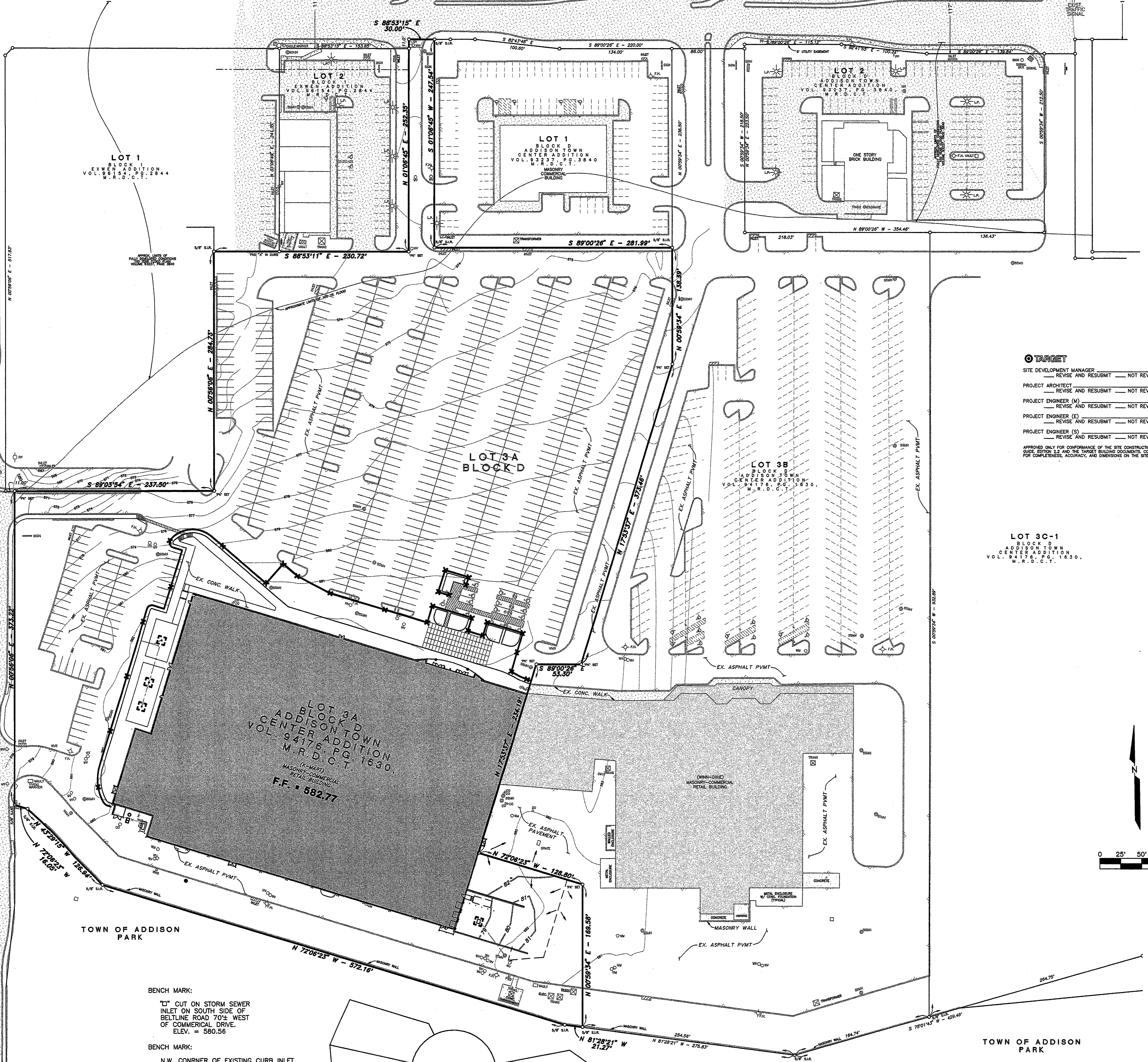


BUSINESS AVE.

BELT LINE ROAD

MARSH LANE



- EROSION CONTROL GENERAL NOTES**
- General Contractor and Owner are responsible for preventing the flow or off-site tracking of sediment and other pollutants to existing streets and adjacent properties.
 - All points used as an exit from areas of exposed soil must have a rock stabilized construction entry/exit fifty feet (50') in length with three inch (3") diameter stone cover. General contractor is responsible for maintaining access points and preventing exit at unprotected locations.
 - If "sump" pumps are used to remove water from excavated areas, filter the discharge to remove sediment and other pollutants before the water leaves the site.
 - Perimeter erosion control measures and the rock stabilized construction exit must be in place before starting soil disturbance.
 - Disturbed soil must be stabilized within 14 days in areas where grading is temporary or permanently stopped for more than 21 days.
 - All surface areas disturbed within or adjacent to the construction limits must be permanently stabilized. Stabilization is obtained when the site is covered with impervious structures, paving or a uniform perennial vegetative cover. The perennial vegetation must have a coverage density of at least 70 percent. Stabilization is required before terminating maintenance and removal of erosion control measures.
 - The General Contractor shall inspect erosion control measures at least once each week and within 24 hours after a storm event of 0.5 inch or greater to maintain function of the controls. Maintenance is crucial to erosion control effectiveness. Erosion control measures that prove to be ineffective shall be replaced with more effective measures or additional measures.
 - For details of stabilization and erosion control measures, refer to the Construction Best Management Practices (BMP) Manual published by North Central Texas Council of Governments.

- CONSTRUCTION SEQUENCE**
- OBTAIN GRADING PERMIT.
 - INSTALL ALL EROSION CONTROL MEASURES AND DEVICES BEFORE CLEARING SITE IF POSSIBLE.
 - CLEAR SITE.
 - INSTALL ANY REMAINING CONTROL MEASURES AND DEVICES NOT INSTALLED PRIOR TO SITE CLEARING.
 - GRADE SITE.
 - INSTALL ALL UNDERGROUND UTILITIES.
 - INSTALL PAVEMENT.
 - RESTORE AND HYDROMULCH WITH BERMUDA GRASS ALL AREAS OUTSIDE CONSTRUCTION LIMITS DISTURBED DURING CONSTRUCTION.
 - INSPECT AND MAINTAIN ALL EROSION CONTROL MEASURES AND DEVICES AFTER EACH RAIN AND FOR THE DURATION OF THE PROJECT.
 - CONTRACTOR TO PROVIDE ADDITIONAL EROSION CONTROL, AS NEEDED OR REQUESTED BY THE ENGINEER OR THE CITY IF PROPOSED EROSION CONTROL PROVES INSUFFICIENT.

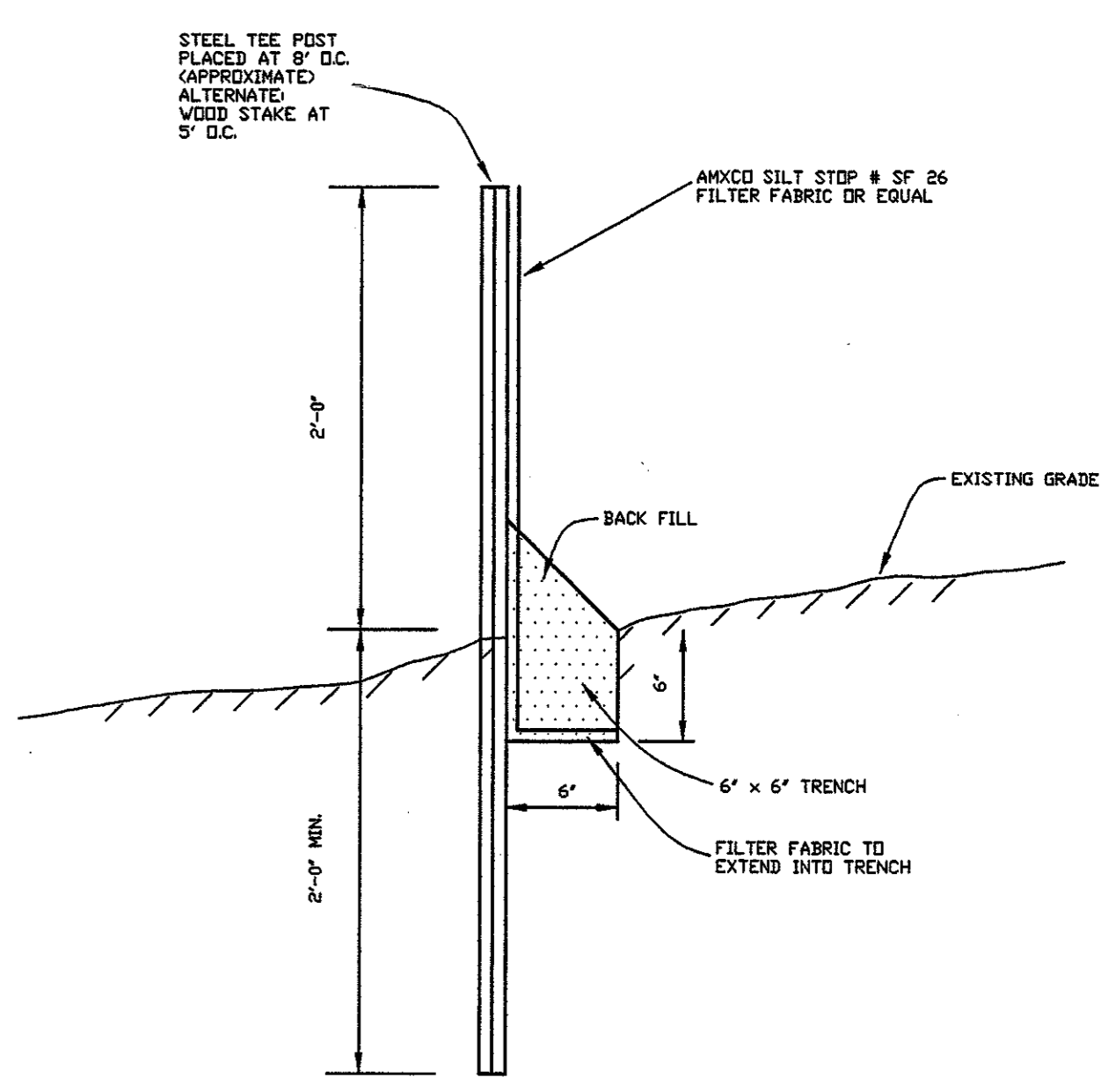
TARGET

SITE DEVELOPMENT MANAGER	REVIEWED BY:		
REVISION AND RESUBMIT	NOT REVIEWED	APPROVED	
PROJECT ARCHITECT	REVISION AND RESUBMIT	NOT REVIEWED	APPROVED
PROJECT ENGINEER (M)	REVISION AND RESUBMIT	NOT REVIEWED	APPROVED
PROJECT ENGINEER (S)	REVISION AND RESUBMIT	NOT REVIEWED	APPROVED
PROJECT ENGINEER (S)	REVISION AND RESUBMIT	NOT REVIEWED	APPROVED

APPROVED ONLY FOR COMPLETION OF THE SITE CONSTRUCTION DOCUMENTS TO TARGET DEVELOPER. OWNER, ENGINEER AND TARGET DEVELOPER SHALL BE SOLELY RESPONSIBLE FOR COMPLETION, ACCURACY, AND ENDORSEMENTS ON THE SITE CONSTRUCTION DOCUMENTS.

INLET PROTECTION HAY BALE FENCE

EROSION CONTROL LOCATION



EROSION CONTROL FENCE
N.T.S.

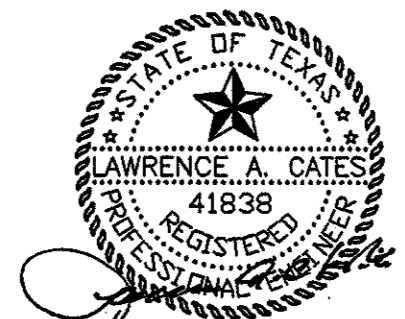
NOTE: CONTRACTOR TO PROVIDE ALTERNATE PRICING FOR ORGANIC FILTER TUBE IN LIEU OF SILT FENCE.



BENCH MARK:
"T" CUT ON STORM SEWER INLET ON SOUTH SIDE OF BELTLINE ROAD 70' WEST OF COMMERCIAL DRIVE. ELEV. = 580.56

BENCH MARK:
N.W. CORNER OF EXISTING CURB INLET LOCATED 57' WEST OF THE INTERSECTION OF BELT LINE ROAD AND BUSINESS AVENUE.

THE SEAL APPEARING ON THIS DOCUMENT WAS AUTHORIZED BY LAWRENCE A. CATES, P.E. 41838 ON 02-07-05



EROSION CONTROL PLAN						
TARGET						
MARSH LANE & BELTLINE ROAD						
THE TOWN OF ADDISON, TEXAS						
LAWRENCE A. CATES & ASSOC.			CONSULTING ENGINEERS DALLAS, TEXAS			
DESIGN	DRAWN	DATE	SCALE	NOTES	FILE	NO.
LAC	LAC	10/02	1"=50'	D.P.	22051 EROSION	C-10