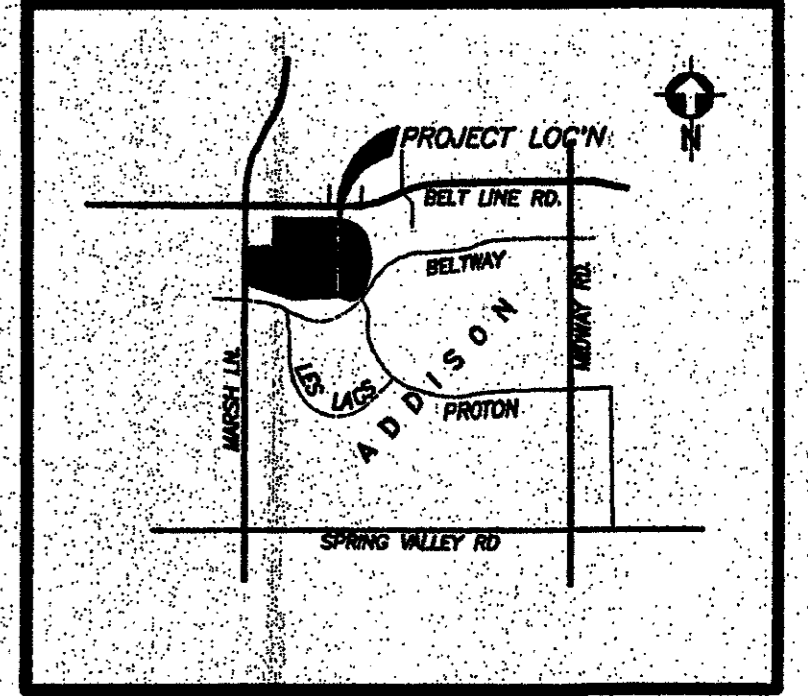
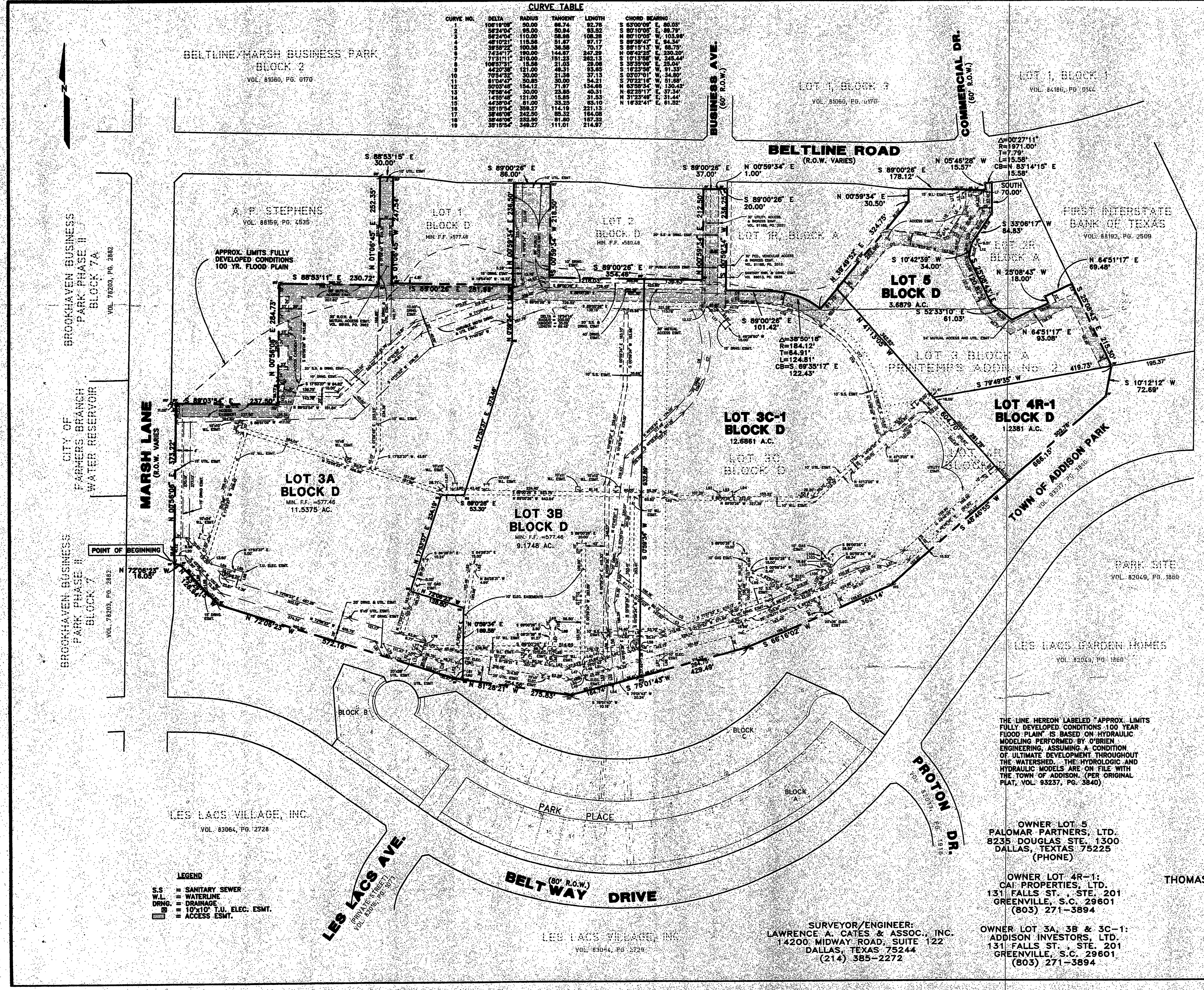


CURVE NO.	DELTA	RADIUS	TANGENT	LENGTH	CHORD BEARING
1	108°19'00"	50.00	62.74	82.78	S 63°00'00" E 80.00'
2	88°24'00"	50.00	50.84	63.52	S 80°10'00" E 80.79'
3	87°24'00"	110.00	58.98	108.28	S 87°10'00" E 103.68'
4	48°10'21"	118.58	81.87	97.17	S 89°38'47" E 94.34'
5	38°58'22"	100.38	58.58	70.17	S 87°11'15" E 67.78'
6	74°34'17"	180.00	144.87	247.25	S 08°42'25" E 230.20'
7	71°11'11"	210.00	161.25	283.13	S 10°13'00" W 248.44'
8	104°57'31"	15.58	21.03	28.08	S 39°35'00" E 25.04'
9	44°22'28"	121.00	48.31	93.88	S 10°23'30" W 91.35'
10	70°34'25"	30.00	21.98	37.13	S 07°01'00" W 34.80'
11	81°04'47"	50.85	30.00	54.21	S 70°22'16" W 51.88'
12	140°54'05"	154.12	71.87	134.88	S 07°01'00" E 130.42'
13	70°38'44"	30.00	22.85	40.31	S 82°28'17" E 37.34'
14	140°54'05"	154.12	71.87	134.88	S 07°01'00" E 134.44'
15	44°22'28"	121.00	48.31	93.88	N 18°32'41" E 91.32'
16	38°58'22"	100.38	58.58	70.17	
17	87°24'00"	110.00	58.98	108.28	
18	108°19'00"	50.00	62.74	82.78	



VICINITY MAP
N.T.S.

LINE TABLE	NO.	BEARING	DISTANCE
1	S 89°00'28" E	48.18'	
2	S 89°00'28" E	10.00'	
3	S 89°00'28" E	41.24'	
4	S 89°00'28" E	128.10'	
5	S 89°00'28" E	129.81'	
6	S 89°00'28" E	5.41'	
7	S 89°00'28" E	15.10'	
8	S 89°00'28" E	10.13'	
9	S 89°00'28" E	18.10'	
10	S 89°00'28" E	17.50'	
11	S 89°00'28" E	74.71'	
12	S 89°00'28" E	15.00'	
13	S 89°00'28" E	74.71'	
14	S 89°00'28" E	17.50'	
15	S 89°00'28" E	15.00'	
16	S 89°00'28" E	70.00'	
17	S 89°00'28" E	33.00'	
18	S 89°00'28" E	30.23'	
19	S 89°00'28" E	21.57'	
20	S 89°00'28" E	44.29'	
21	S 89°00'28" E	10.40'	
22	S 89°00'28" E	16.73'	
23	S 89°00'28" E	10.40'	
24	S 89°00'28" E	14.48'	
25	S 89°00'28" E	14.48'	
26	S 89°00'28" E	15.80'	
27	S 89°00'28" E	15.80'	
28	S 89°00'28" E	10.18'	
29	S 89°00'28" E	36.58'	
30	S 89°00'28" E	46.58'	
31	S 89°00'28" E	15.82'	
32	S 89°00'28" E	17.37'	
33	S 89°00'28" E	191.81'	
34	S 89°00'28" E	65.01'	
35	S 89°00'28" E	11.23'	
36	S 89°00'28" E	10.00'	
37	S 89°00'28" E	86.00'	
38	S 89°00'28" E	44.58'	
39	S 89°00'28" E	54.74'	
40	S 89°00'28" E	10.00'	
41	S 89°00'28" E	38.00'	
42	S 89°00'28" E	62.59'	
43	S 89°00'28" E	2.11'	
44	S 89°00'28" E	28.89'	
45	S 89°00'28" E	35.00'	
46	S 89°00'28" E	34.71'	
47	S 89°00'28" E	27.25'	
48	S 89°00'28" E	10.23'	
49	S 89°00'28" E	4.57'	
50	S 89°00'28" E	39.57'	
51	S 89°00'28" E	15.00'	
52	S 89°00'28" E	58.48'	
53	S 89°00'28" E	20.00'	
54	S 89°00'28" E	20.00'	
55	S 89°00'28" E	38.32'	
56	S 89°00'28" E	38.32'	
57	S 89°00'28" E	25.95'	
58	S 89°00'28" E	10.02'	
59	S 89°00'28" E	30.00'	
60	S 89°00'28" E	10.33'	
61	S 89°00'28" E	23.32'	
62	S 89°00'28" E	16.00'	
63	S 89°00'28" E	10.00'	
64	S 89°00'28" E	10.00'	
65	S 89°00'28" E	11.74'	
66	S 89°00'28" E	48.89'	
67	S 89°00'28" E	16.00'	
68	S 89°00'28" E	16.00'	
69	S 89°00'28" E	10.00'	
70	S 89°00'28" E	5.18'	

THE LINE HEREON LABELED "APPROX. LIMITS FULLY DEVELOPED CONDITIONS - 100 YEAR FLOOD PLAIN" IS BASED ON HYDRAULIC MODELING PERFORMED BY O'BRIEN ENGINEERING, ASSUMING A CONDITION OF ULTIMATE DEVELOPMENT THROUGHOUT THE WATERSHED. THE HYDROLOGIC AND HYDRAULIC MODELS ARE ON FILE WITH THE TOWN OF ADDISON. (PER ORIGINAL PLAT, VOL. 93237, PG. 3840)

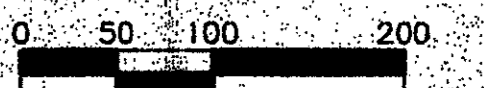
REPLAT
LOTS 3A, 3B, 3C-1, 4R-1 & 5
ADDISON TOWN CENTER
 A REPLAT OF
 LOTS 3A, 3B, 3C & 4R, BLOCK
 ADDISON TOWN CENTER
 AND ALL OF LOT 3, BLOCK A
 PRINTEMPS ADDITION NO. 2
 BEING IN THE
 THOMAS L. CHENOWETH SURVEY, ABSTRACT NO. 273
 TOWN OF ADDISON
 DALLAS COUNTY, TEXAS

OWNER LOT 5
 PALOMAR PARTNERS, LTD.
 8235 DOUGLAS STE. 1300
 DALLAS, TEXAS 75225
 (PHONE)

OWNER LOT 4R-1,
 CA PROPERTIES, LTD.
 131 FALLS ST., STE. 201
 GREENVILLE, S.C. 29601
 (803) 271-3894

SURVEYOR/ENGINEER:
 LAWRENCE A. CATES & ASSOC., INC.
 14200 MIDWAY ROAD, SUITE 122
 DALLAS, TEXAS 75244
 (214) 385-2272

AUGUST 02, 1994



R:\UNCS\0604\THEPLAT_Sun Aug 14 12:46:08 1994