





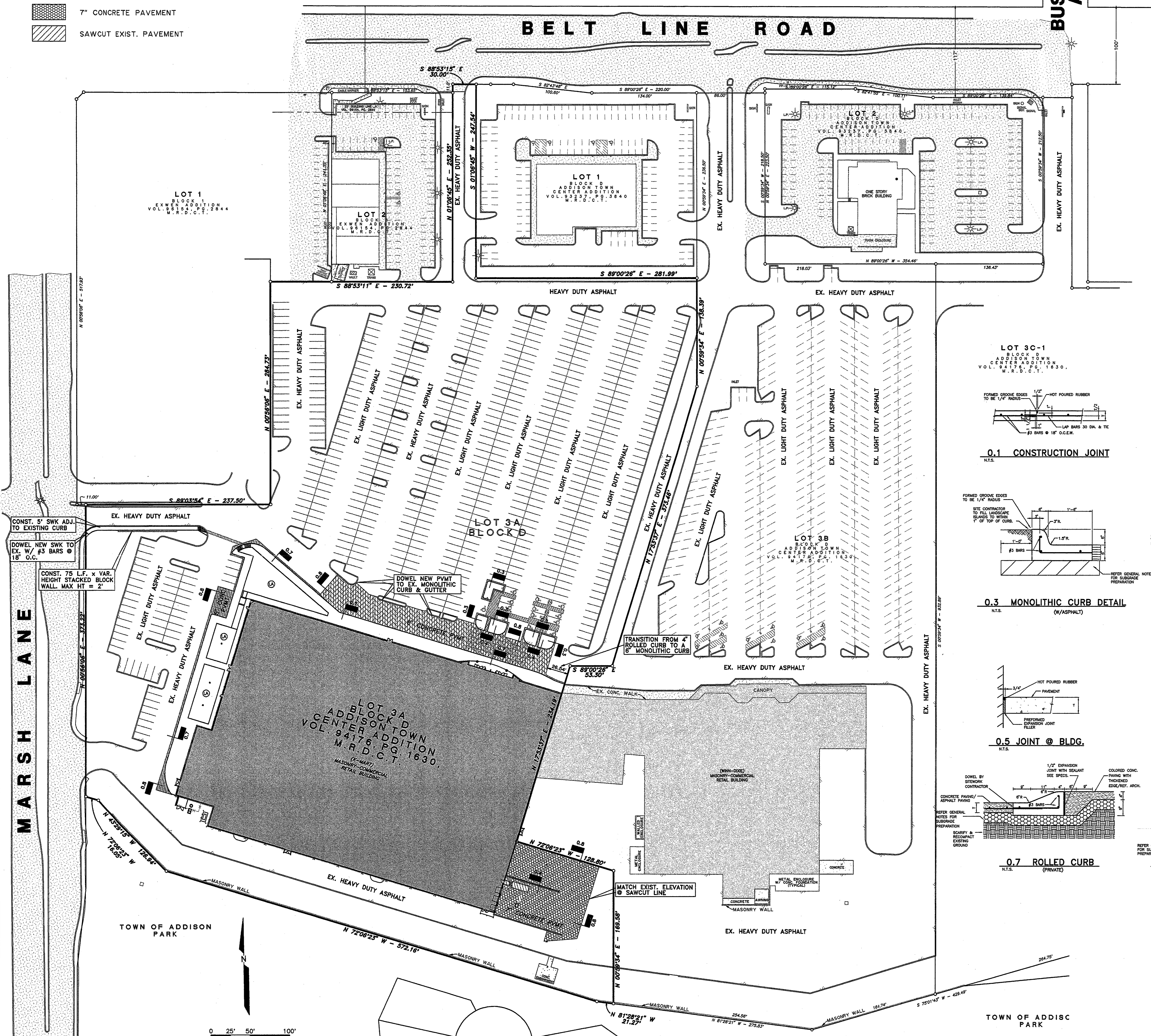
LEGEND

-  5" CONCRETE PAVEMENT
-  6" CONCRETE PAVEMENT
-  7" CONCRETE PAVEMENT
-  SAWCUT EXIST. PAVEMENT

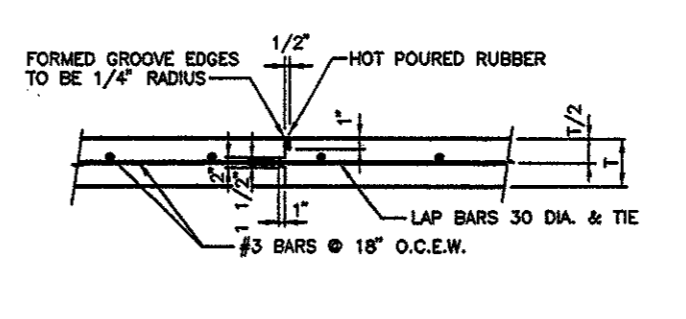
THOMAS L. CHENOWITH SURVEY, ABSTRACT NO. 273

PAVING GENERAL NOTES:

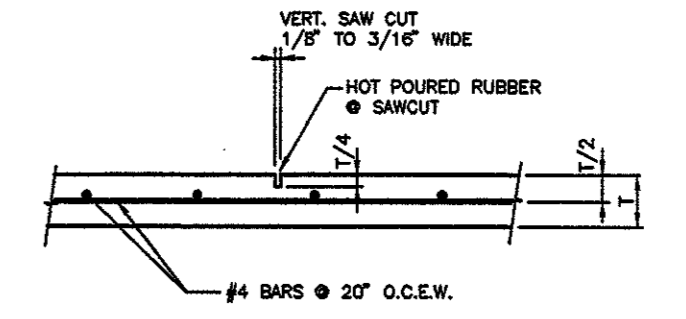
1. ALL PAVING SHALL BE OF THE THICKNESS AND COMPRESSIVE STRENGTH AS SHOWN ON THE PLAN. CONCRETE STRENGTH AT 28 DAYS. ALL CONCRETE SHALL HAVE A ONE INCH (1") TO FOUR INCH (4") SLUMP AND BE REINFORCED WITH #3 BARS AT 18" O.C.E.W. REINFORCING SHALL BE SUPPORTED BY CHAIRS AND SPACED AT 16 S.F. MAX.
2. SUBGRADE SHALL BE SCARIFIED TO A DEPTH OF SIX INCHES (6") AND RECOMPACTED TO 95% STANDARD PROCTOR DENSITY AT -2 TO +3 PERCENT ABOVE OPTIMUM MOISTURE.
3. SEALANT MATERIAL TO BE 0A44 ASPHALT OR A RUBBER BASED COMPOUND. SPECIFICATIONS TO BE SUBMITTED TO THE ENGINEER PRIOR TO INSTALLATION.
4. BREAKOUTS FOR REMOVAL OF EXISTING PAVEMENT AND CURBS SHALL BE MADE BY SAW CUT WHEN ADJACENT TO PROPOSED PAVING AND/OR CURBS.
5. PROPOSED CONCRETE CURBS SHALL MATCH ELEVATIONS OF EXISTING CURB.
6. CONCRETE TO BE FLOAT FINISHED AND CURED FOR A MINIMUM OF 72 HOURS.
7. ALL PARKING SPACES SHOWN ON PROPOSED CONSTRUCTION SHALL BE MARKED WITH 4 INCH (4") WIDE WHITE PAINTED PAVEMENT STRIPING. PAINT SHALL BE SHERWIN WILLIAMS SERIES B-29W2 OR APPROVED ALTERNATE. ALL SPACES TO BE RESTRIPTED.
8. ALL WORKMANSHIP AND MATERIAL SHALL BE IN ACCORDANCE WITH THE TOWN OF ADDISON STANDARD SPECIFICATIONS AND/OR SPECIFICATIONS ESTABLISHED BY THIS PROJECT. THE MOST STRINGENT SHALL APPLY.
9. CONTRACTOR SHALL SUBMIT A JOINT SPACING PLAN TO THE ENGINEER PRIOR TO PLACEMENT OF CONCRETE PAVEMENT. CONTROL JOINTS SHALL BE INSTALLED AT A MAXIMUM SPACING OF 12' O.C.E.W. FOR FIVE INCH (5") THICK PAVEMENT AND EIGHTEEN FEET (18') O.C.E.W. FOR SEVEN INCH (7") THICK PAVEMENT. EXPANSION JOINTS SHALL BE INSTALLED AT A MAXIMUM SPACING OF NINETY FEET (90'). CONCRETE SHALL BE PLACED IN STRIPS NOT TO EXCEED 30 FEET (30') IN WIDTH. LEVEL UP SAND COARSE WILL NOT BE ALLOWED.
10. CONTRACTOR WILL PROVIDE A TWO (2) YEAR UNCONDITIONAL MAINTENANCE FREE WARRANTY ON PORTLAND CEMENT CONCRETE PAVEMENT.



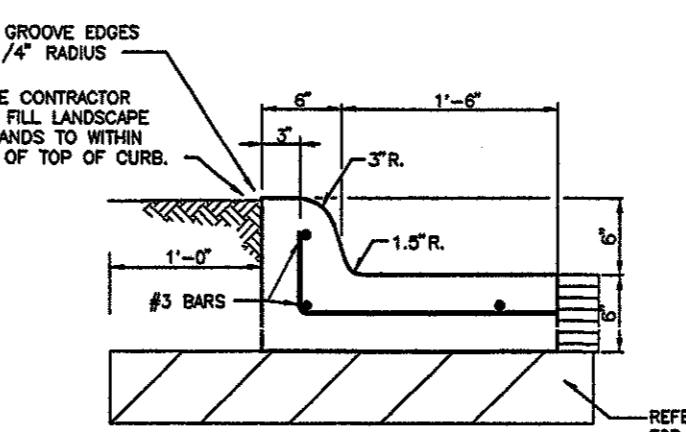
LOT 3C-1
BLOCK D
ADDISON TOWN
CENTER ADDITION
VOL. 94176, PG. 1630,
M.R.D.C.T.



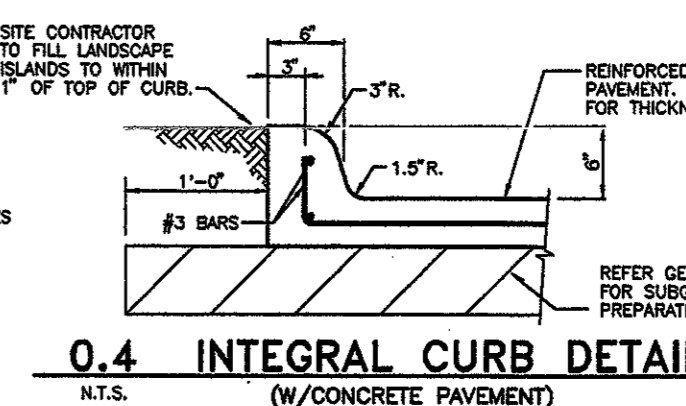
0.1 CONSTRUCTION JOINT
N.T.S.



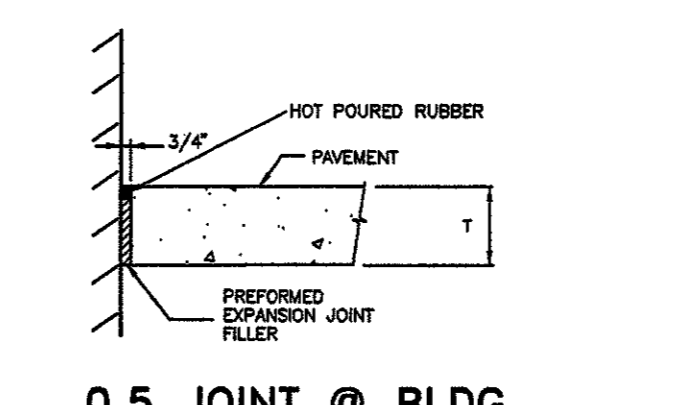
0.2 CONTROL JOINT
N.T.S.



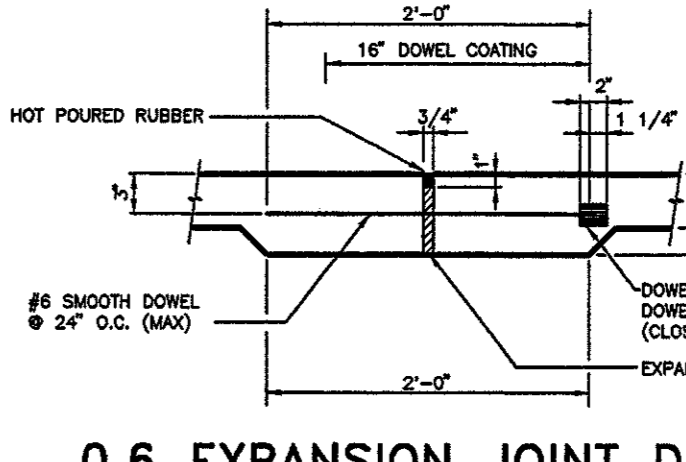
0.3 MONOLITHIC CURB DETAIL
N.T.S. (W/ASPHALT)



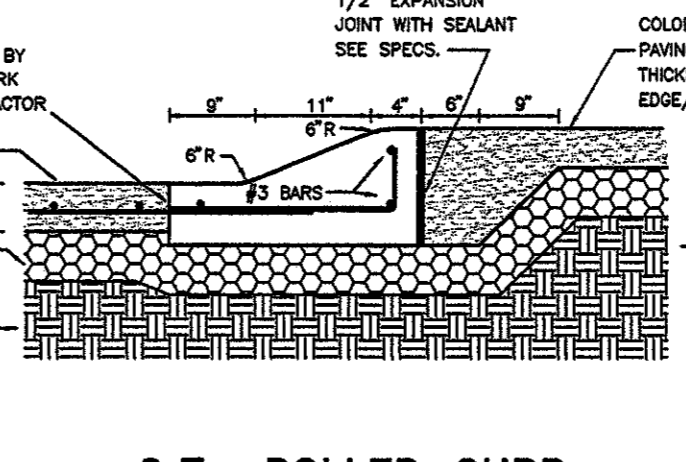
0.4 INTEGRAL CURB DETAIL
N.T.S. (W/CONCRETE PAVEMENT)



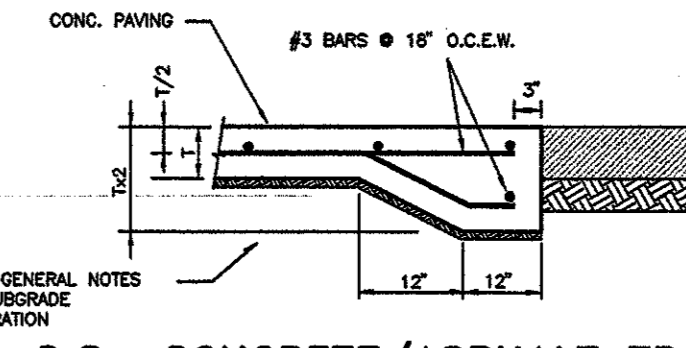
0.5 JOINT @ BLDG.
N.T.S.



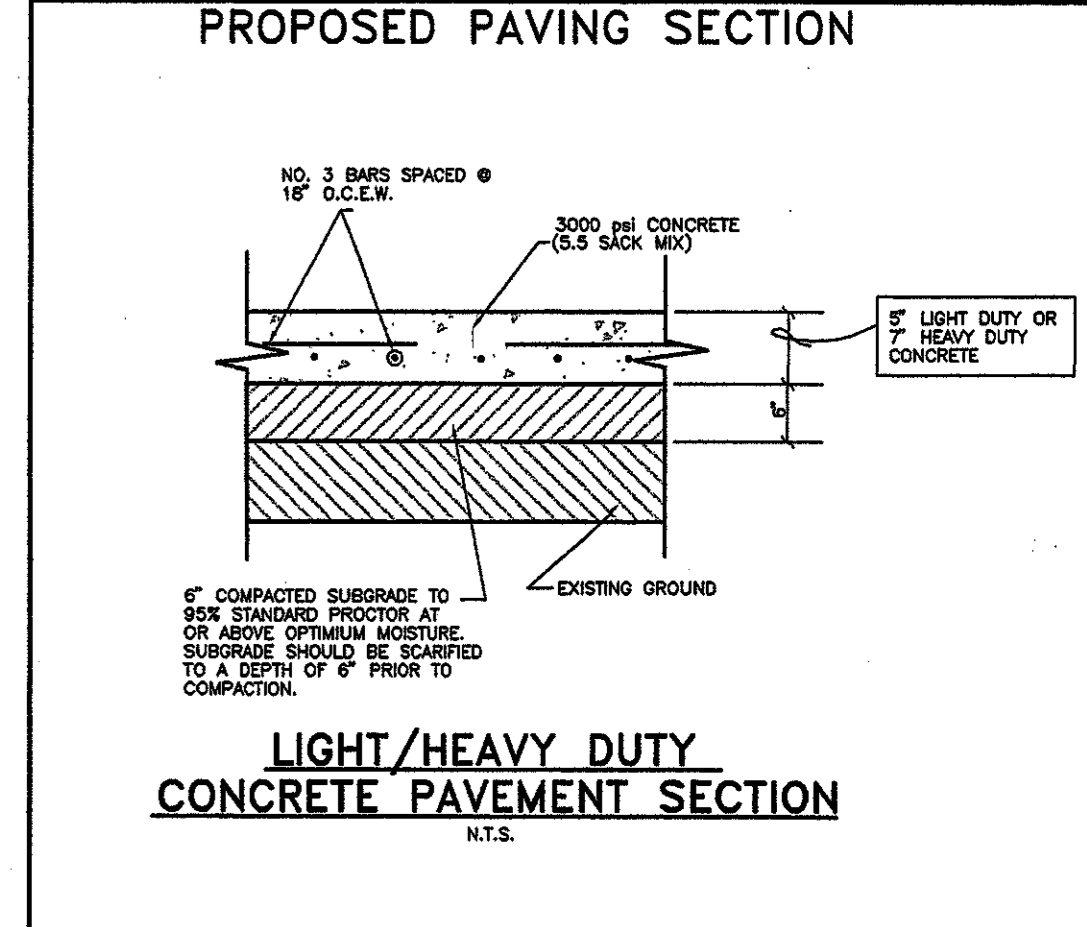
0.6 EXPANSION JOINT DETAIL
N.T.S.



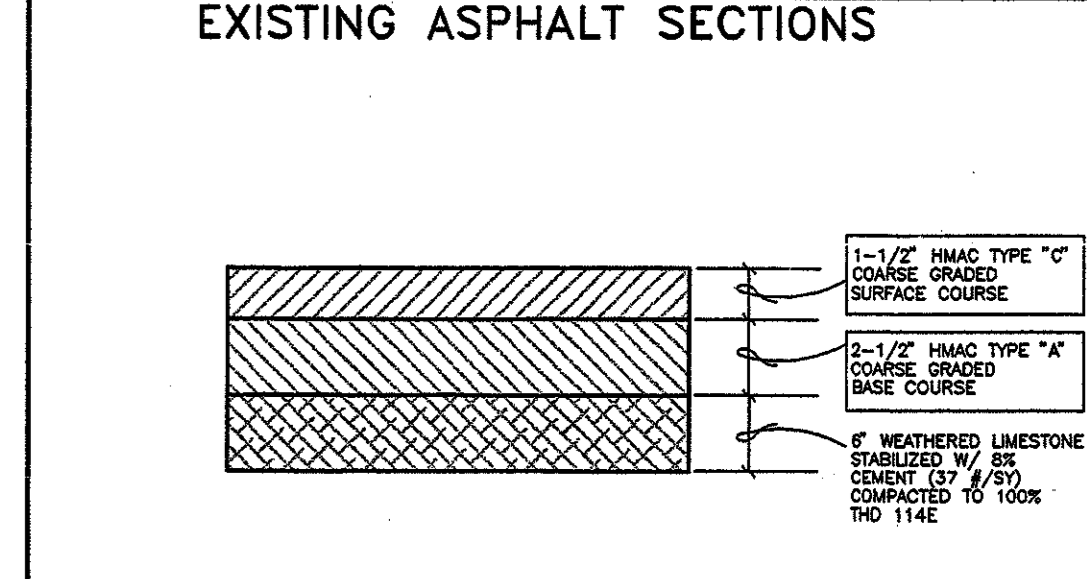
0.7 ROLLED CURB
N.T.S. (PRIVATE)



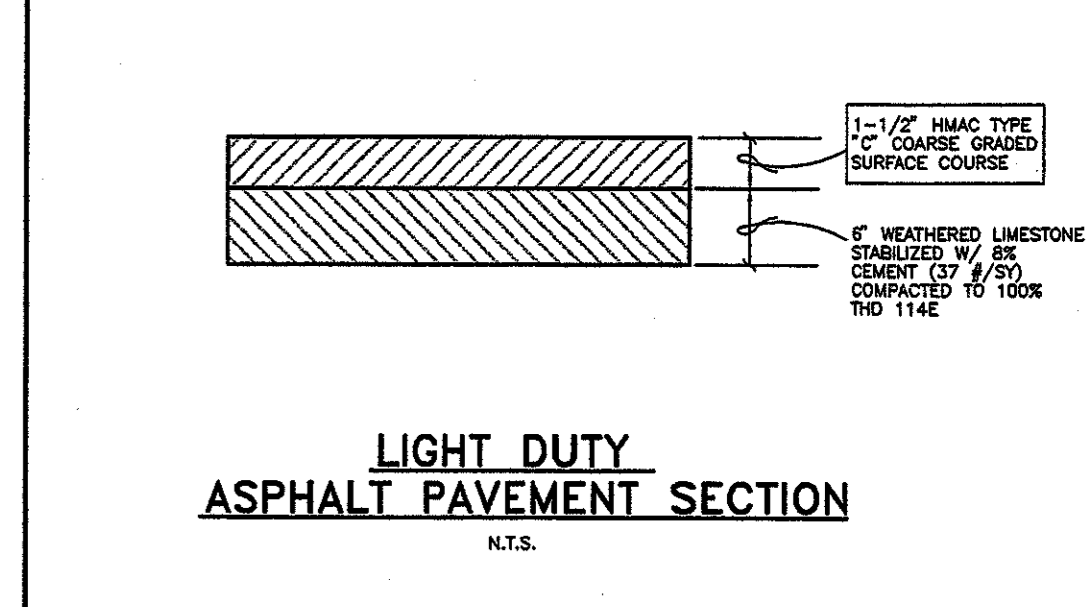
0.8 CONCRETE/ASPHALT TRANSITION
N.T.S.



LIGHT/HEAVY DUTY
CONCRETE PAVEMENT SECTION
N.T.S.



HEAVY DUTY
ASPHALT PAVEMENT SECTION
N.T.S.

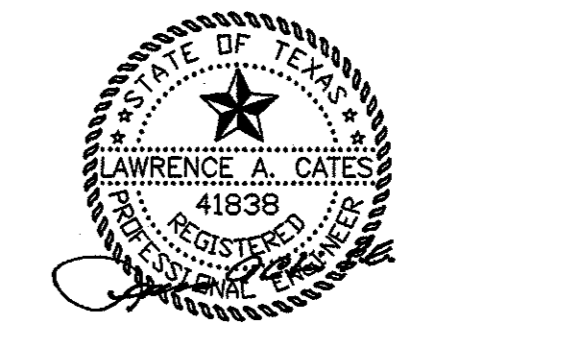


LIGHT DUTY
ASPHALT PAVEMENT SECTION
N.T.S.

REVIEWED BY:	
SITE DEVELOPMENT MANAGER	REVIEW AND RESUBMIT NOT REVIEWED APPROVED
PROJECT ARCHITECT	REVIEW AND RESUBMIT NOT REVIEWED APPROVED
PROJECT ENGINEER (M)	REVIEW AND RESUBMIT NOT REVIEWED APPROVED
PROJECT ENGINEER (E)	REVIEW AND RESUBMIT NOT REVIEWED APPROVED
PROJECT ENGINEER (S)	REVIEW AND RESUBMIT NOT REVIEWED APPROVED

APPROVED ONLY FOR CONFORMANCE OF THE SITE CONSTRUCTION DOCUMENTS TO TARGET DEVELOPER GUIDE, EDITION 2.5 AND THE TARGET BUILDING DOCUMENTS. CONSULTANT IS SOLELY RESPONSIBLE FOR COMPLETENESS, ACCURACY, AND DIMENSIONS ON THE SITE CONSTRUCTION DOCUMENTS.

THE SEAL APPEARING ON THIS DOCUMENT WAS AUTHORIZED BY LAWRENCE A. CATES, P.E. 41838 ON 02-17-23



PAVING PLAN						
TARGET						
MARSH LANE & BELTLINE ROAD						
THE TOWN OF ADDISON, TEXAS						
LAWRENCE A. CATES & ASSOC.				CONSULTING ENGINEERS		
DESIGN	DRAWN	DATE	SCALE	NOTES	FILE	NO.
LAC	LAC	10/02	1"=50'	D.P.	22051 PAVPLAN	C-5

