

Luminaire Schedule							
Project: All Projects							
Symbol	Qty	Label	Arrangement	Lumens	LLF	Description	Total Watts
SA	17	SA	4 @ 90 DEGREES	40000	0.750	GBM-5-400-SMV-CT	1832
SB	2	SB	D180	40000	0.750	GBM-FP-400-SMV-CT	916
SC	3	SC	SINGLE	40000	0.750	GBM-FP-400-SMV-CT	458

Numeric Summary					
Project: All Projects					
Label	Avg	Max	Min	Avg/Min	Max/Min
AREA	4.15	7.6	0.6	6.92	12.67

All 27' Poles to be mounted on concrete pedestals 3' above grade, for a total mounting height of 30'.

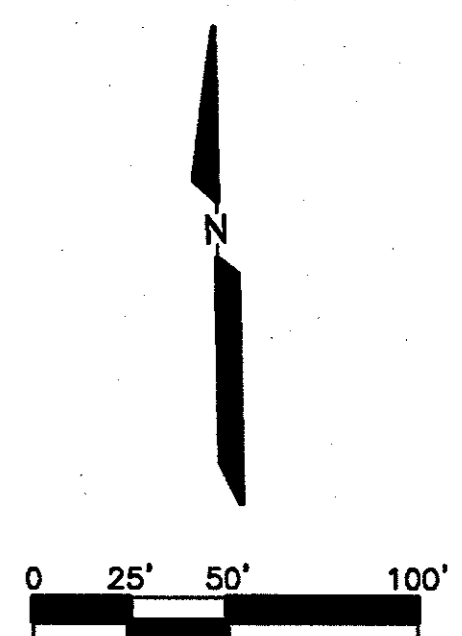
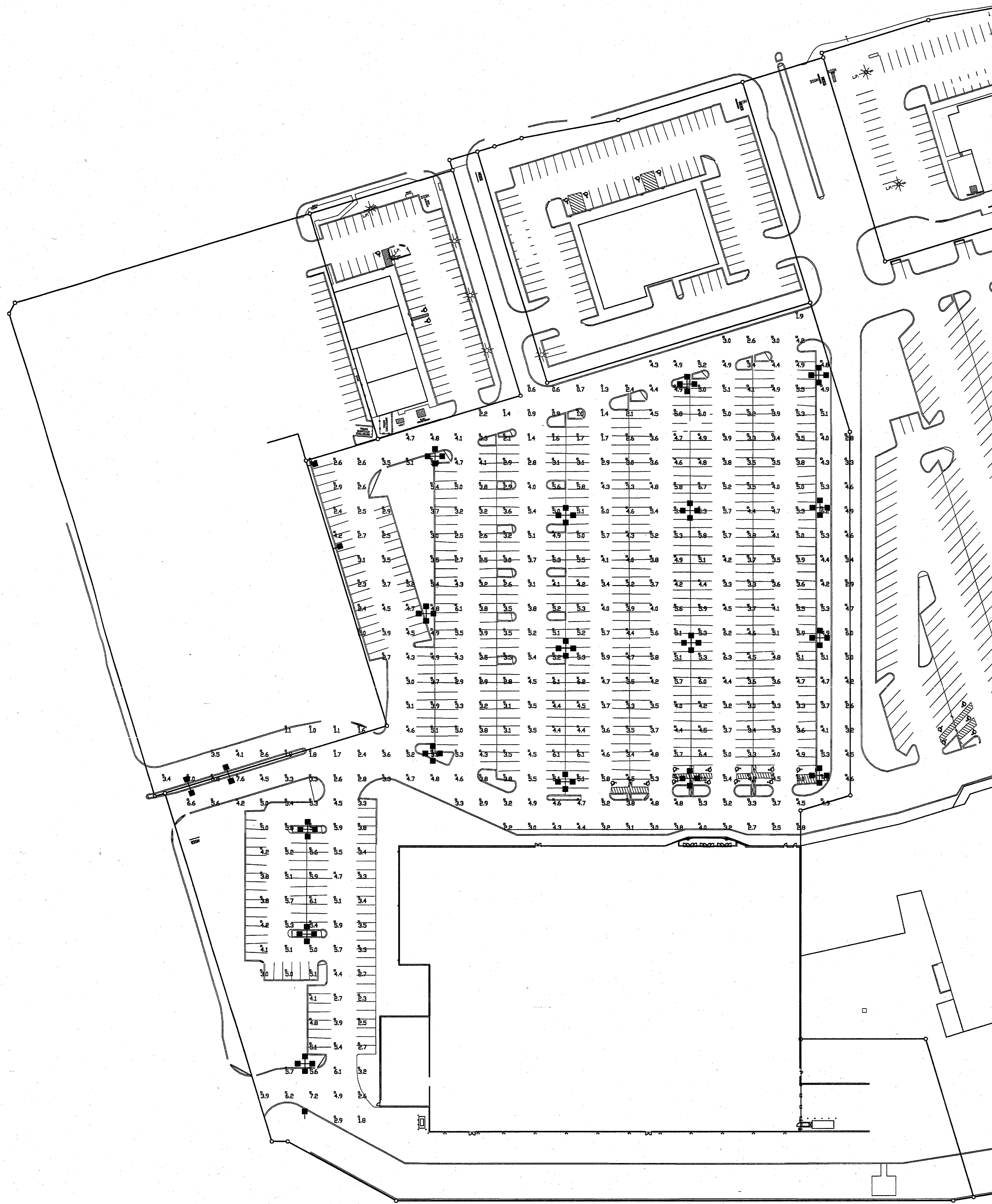
Maintained Footcandle levels at grade, using a .75 Total Light Loss Factor.

READINGS ON 25' CENTERS

Based on the information provided, all dimensions and luminaire locations shown represent recommended positions. The engineer and/or architect must determine applicability of the layout to existing or future field conditions.

This lighting pattern represents illumination levels calculated from laboratory data taken under controlled conditions utilizing current industry standard lamp ratings in accordance with Illuminating Engineering Society approved methods. Actual performance of any manufacturer's luminaire may vary due to variation in electrical voltage, tolerance in lamps and other variable field conditions.

EXISTING LIGHTING FIXTURES/POLES/LAMPS	
SA	(4) LSI # GBM/5/400SMV/CT/480/PLT/RPA/12BK WHITCO # RTSP/27-0-8T/G80/PLT/RTBC 27' POLE (4) 400W SMH
SB	(2) LSI # GBM/FP/400SMV/CT/480/PLT/RPA/12BK WHITCO # RTSP/27-0-8T/D180/PLT/RTBC 27' POLE (2) 400W SMH
SC	(1) LSI # GBM/FP/400SMV/CT/480/PLT/RPA/12BK WHITCO # RTSP/27-0-8T/S/PLT/RTBC 27' POLE (1) 400W SMH



TARGET	REVIEWED BY:
SITE DEVELOPMENT MANAGER	_____
PROJECT ARCHITECT	_____
PROJECT ENGINEER (M)	_____
PROJECT ENGINEER (E)	_____
PROJECT ENGINEER (S)	_____

APPROVED ONLY FOR CONFORMANCE OF THE SITE CONSTRUCTION DOCUMENTS TO TARGET DEVELOPER GUIDE, EDITION 2.2 AND THE TARGET BUILDING DOCUMENTS. CONSULTANT IS SOLELY RESPONSIBLE FOR COMPLETENESS, ACCURACY, AND DIMENSIONS ON THE SITE CONSTRUCTION DOCUMENTS.

REV.	DATE	REVISIONS				
EXISTING PHOTOMETRICS PLAN						
TARGET						
MARSH LANE & BELTLINE ROAD						
THE TOWN OF ADDISON, TEXAS						
LAWRENCE A. CATES & ASSOC., INC. CONSULTING ENGINEERS DALLAS, TEXAS						
DESIGN	DRAWN	DATE	SCALE	NOTES	FILE	NO.
RAR	RAR	01/24/03	1"=50'	-	22051	MEP-2

ROBINETT & ASSOCIATES
2714 W. KINGSLEY ROAD
SUITE B1
GARLAND, TEXAS 75041
(972) 840-8989