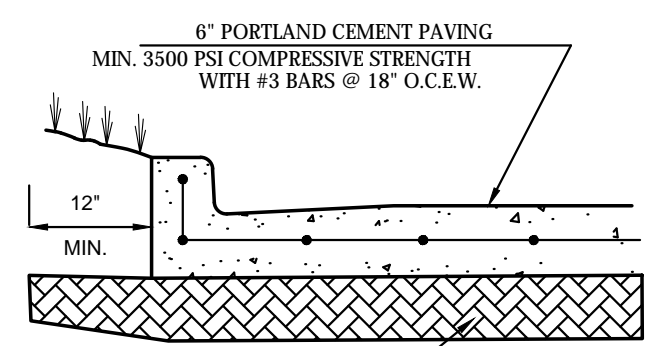
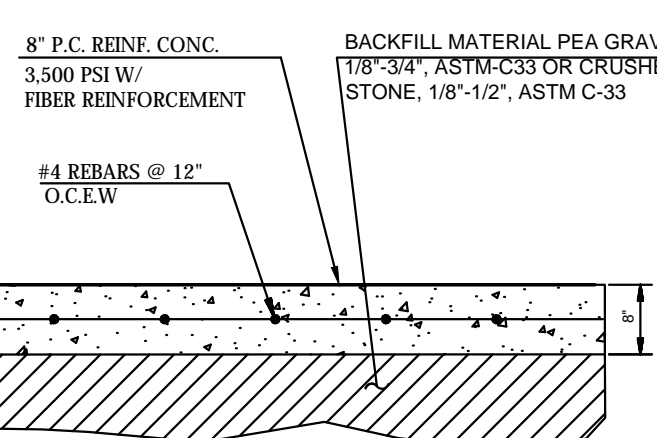


SITE BENCHMARK
 SITE BENCHMARK (TBM) IS A MAG NAIL WITH WASHER STAMPED TPI
 LAND SURVEYING SET WITHIN A CONCRETE ISLAND TO THE NORTHEAST OF
 THE NORTHEAST CORNER OF THE BUILDING AT 3700 BELT LINE ROAD AND
 EAST OF A FIRE HYDRANT. THE TBM HAS THE FOLLOWING VALUES: X =
 277938.00 (Y = 702888.02) (TEXAS COORDINATE SYSTEM OF 1983, NORTH
 CENTRAL ZONE); Z = 56.16 (NAVD83)

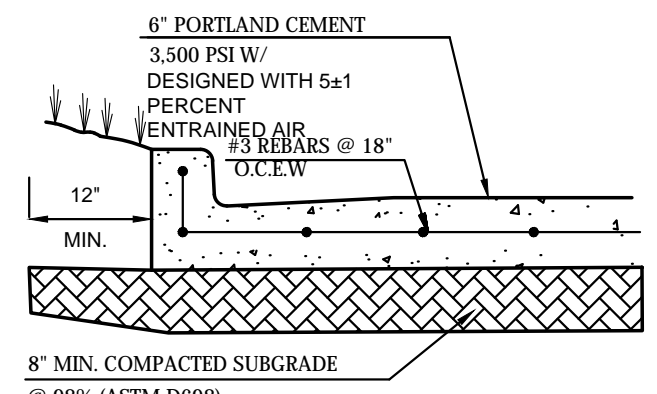
NOTE:
 SEE ARCHITECTURAL PLANS FOR EXACT LOCATIONS AND DIMENSIONS OF
 PORCHES, RAMPS, VESTIBULE, SLOPED PAVING, TRUCK DOCKS, BUILDING,
 UTILITY ENTRANCE LOCATIONS AND PRECISE BUILDING DIMENSIONS.



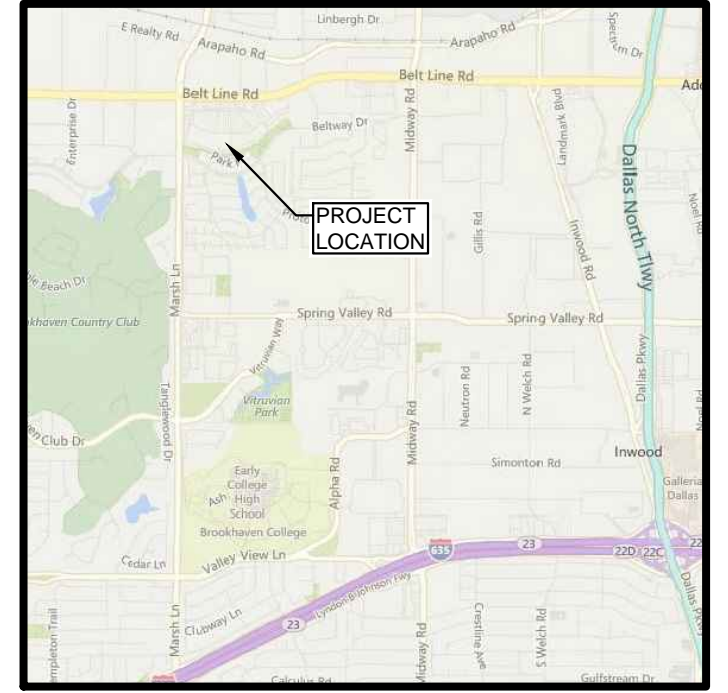
CANOPY SLAB CONCRETE PAVING
 NTS



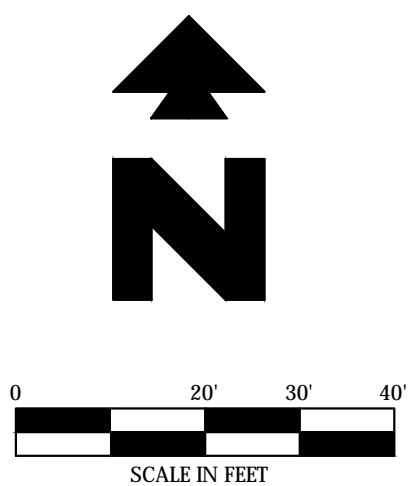
TANK CONCRETE SLAB
 NTS



STANDARD DUTY CONCRETE PAVING
 SCALE



Vicinity Map
 Not to Scale



LEGEND

EXISTING	
□ air conditioner	□ light pole
□ borehole	□ mailbox
□ cable tv	□ monitoring well
□ electric meter	□ overhead utility lines
□ fence or handrail	□ pool equipment
□ fire dept. connection	□ road sign
□ fire hydrant	□ silt fence
□ guard rail	□ spot elevation
□ grease trap	□ sanitary sewer manhole
□ bollard	□ sanitary sewer pipe
□ grate inlet	□ storm water manhole
□ gas meter	□ storm water pipe
□ gas line	□ telephone manhole
□ utility pole anchor	□ tank fill lid
□ irrigation valve	□ telephone riser
□ landscape or tree line	□ traffic signal pole
□ utility clean out	□ utility cabinet
□ utility vault	□ utility markings (line color = color of markings)
□ utility pole	□ utility pole with riser
□ utility sign	□ water shutoff
□ water valve	□ water manhole
□ water meter	□ well
□ water line	

PROPOSED
 --- PROPERTY LINE/RIGHT OF WAY LINE

- GENERAL PAVING NOTES**
- THE PAVING CONSTRUCTION SHALL COORDINATE WITH THE UTILITY & IRRIGATION CONTRACTORS TO INSURE THAT ALL SLEEVING HAS BEEN INSTALLED PRIOR TO PLACEMENT OF PERMANENT PAVEMENT.
 - ALL PAVING AND EARTHWORK OPERATIONS SHALL CONFIRM TO THE RECOMMENDATIONS IN THE GEOTECHNICAL REPORT AND MEET KROGER CONSTRUCTION STANDARDS
 - REFER TO GEOTECHNICAL REPORT FOR SUBGRADE PREPARATION, SPECIFICATION, AND CONSTRUCTION JOINT RECOMMENDATIONS PREPARED BY ALPHA TESTING, REPORT G151514, DATED AUGUST 24 2015
 - REPLACE FIRE LANE STRIPING IN ALL APPLICABLE AREAS PER TOWN OF ADDISON DETAIL

PAVING NOTES

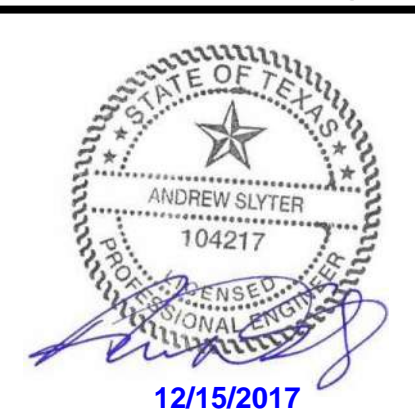
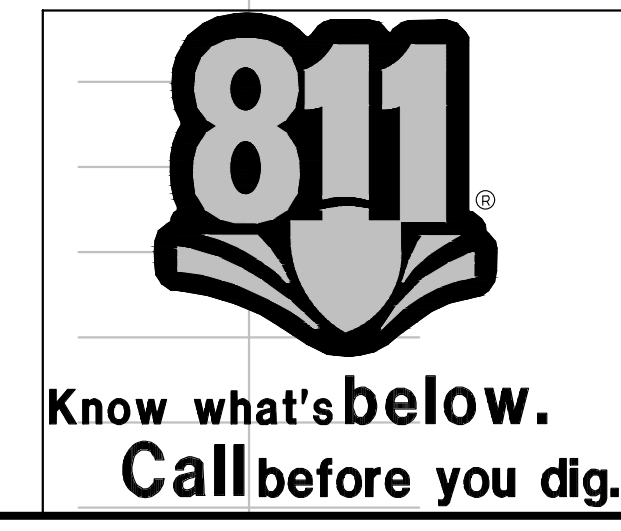
79A	PAVEMENT REPAIR (PER CITY DETAIL)
-----	-----------------------------------

PAVING DETAILS

08C	TANK CONCRETE PAVING
08E	CANOPY CONCRETE PAVING
70A	STANDARD DUTY CONCRETE PAVING

AS-BUILT DRAWING BASED SOLELY ON A SKETCH PROVIDED BY COYOTE CONTRACTORS DATED 7-19-2017. CEI ENGINEERING ASSUMES NO RESPONSIBILITY FOR THE ACCURACY OR COMPLETENESS OF THIS PLAN

JOB # 26873 DRAWING: 26873-SP.dwg, LAST SAVED BY: USER: A. LOCATION: P:\26800\26873-SP.dwg, DRAWINGS DESIGN: A. BUILDING: 26873-SP.dwg



26873 7/24/17 ADS JEE JPS JPS
 CEI PROJECT NO. INITIAL DATE DPOR PM DES DRW

F-7524

CEI Engineering Associates, Inc.
 ENGINEERS • PLANNERS • SURVEYORS
 LANDSCAPE ARCHITECTS • ENVIRONMENTAL SCIENTISTS

4800 Sugar Grove Blvd, Suite 316 (281)484-0089
 Stafford, TX 77477 (281)484-0360

KROGER SW870
 3770 BELTLINE RD TX
 ADDISON TX

PAVING PLAN REV. DATE 7/24/17 SHEET NO. C7
 AS-BUILT

© 2017 CEI ENGINEERING ASSOCIATES, INC.