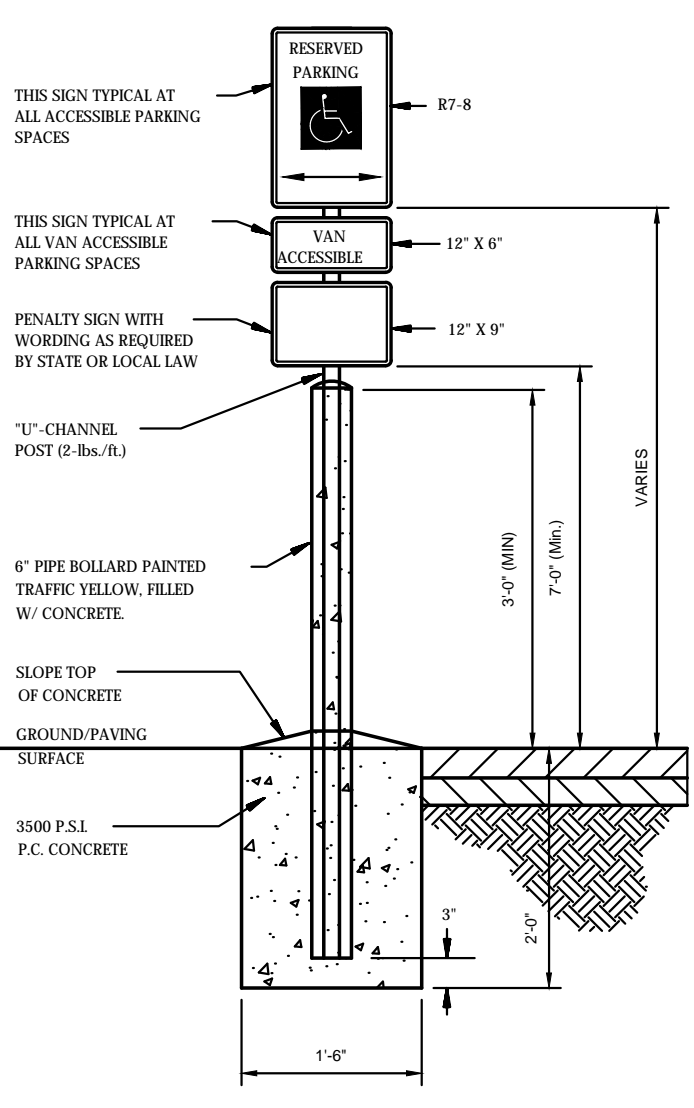
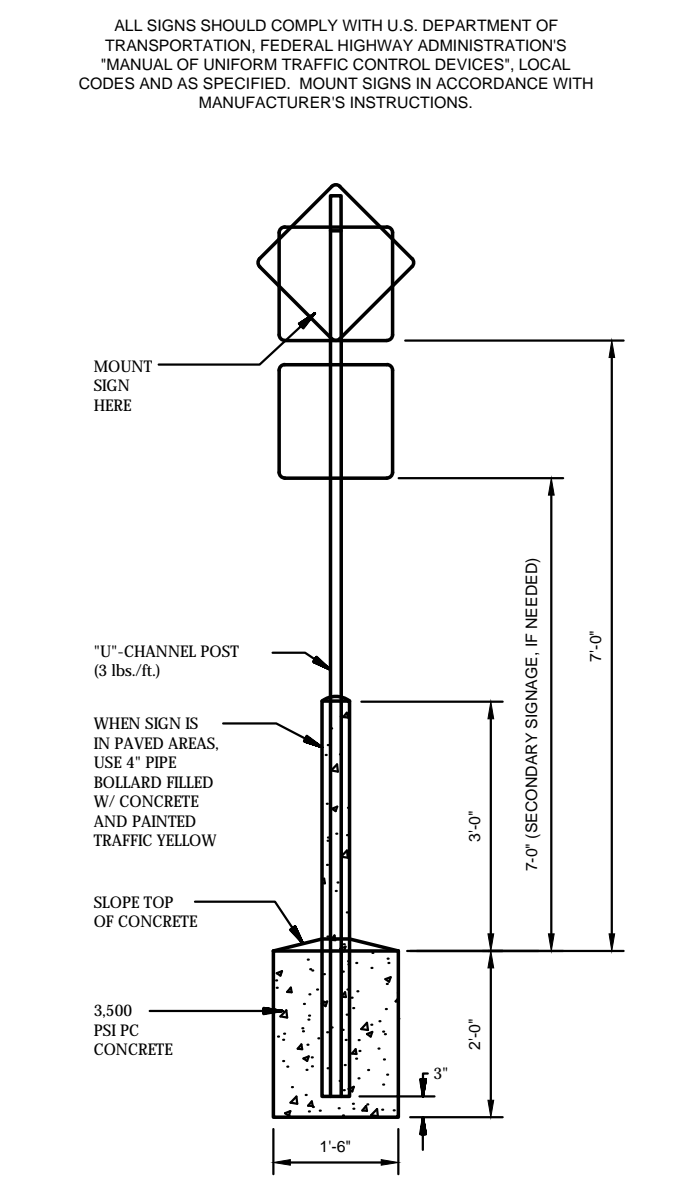


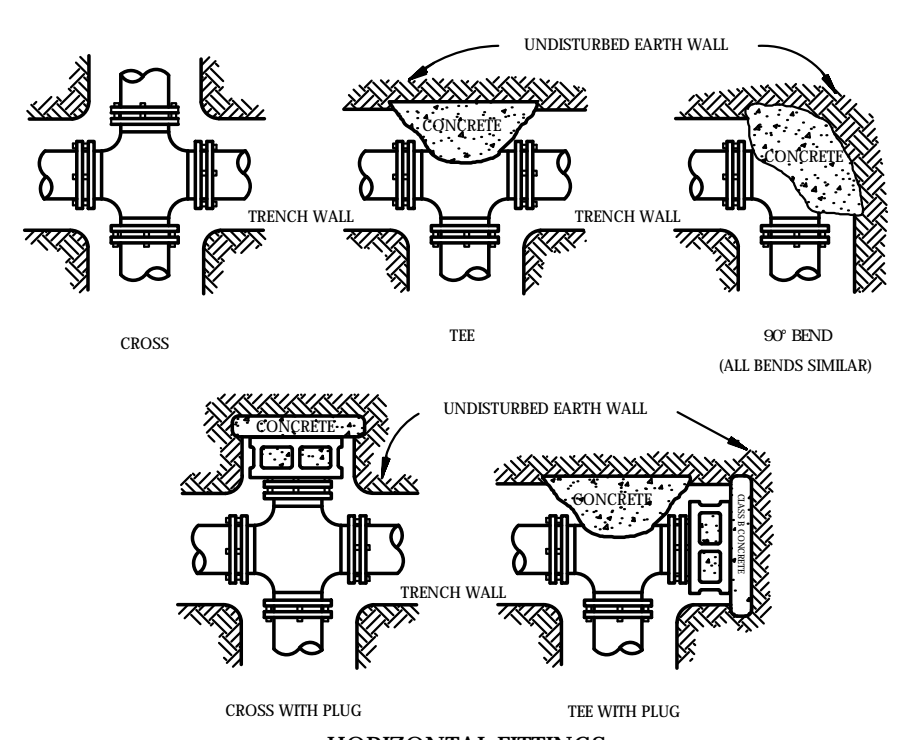
NOTES:
LOCATE AT EDGE OF PARKING SPACE UNLESS ACCOMPANIED BY "VAN" LETTERING
ACCESSIBLE PARKING SYMBOL
N.T.S.



ACCESSIBLE / VAN ACCESSIBLE PARKING SIGN
N.T.S.



SIGN BASE
N.T.S.



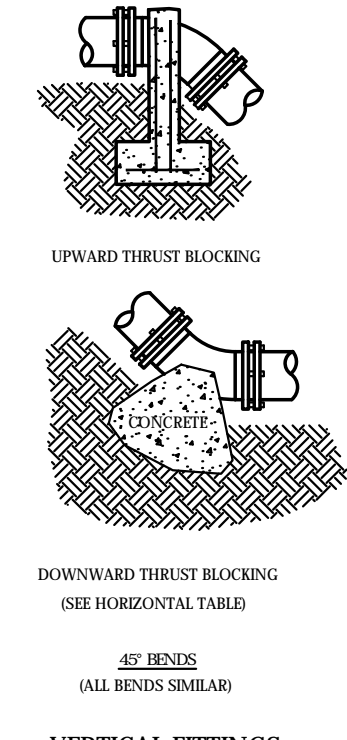
HORIZONTAL FITTINGS

HORIZONTAL THRUST BLOCKING TABLE					MINIMUM CONCRETE VOLUMES FOR UPWARD THRUST BLOCKING											
PIPE SIZE	REQUIRED SQ. FT. OF UNDISTURBED EARTH WALL FOR REACTION BACKING				11.25 DEGREE BEND ANCHOR STRAPS			22.5 DEGREE BEND ANCHOR STRAPS			45 DEGREE BEND ANCHOR STRAPS			90 DEGREE BEND ANCHOR STRAPS		
	TYPE	TYPE	TYPE	TYPE	NO.	SIZE	CONCRETE VOLUME	NO.	SIZE	CONCRETE VOLUME	NO.	SIZE	CONCRETE VOLUME	NO.	SIZE	CONCRETE VOLUME
2"	1	1	1	1	1	44	0.04	1	44	0.08	1	44	0.16	1	44	0.32
3"	1	1	1	1	1	44	0.09	1	44	0.18	1	44	0.36	1	44	0.72
4"	1	1	1	1	1	44	0.16	1	44	0.32	1	44	0.64	1	44	1.28
6"	1	1	1	1	1	100	0.37	1	44	0.74	1	44	1.48	1	44	2.97
8"	1.5	2	1	1	1	120	0.66	1	44	1.32	1	44	2.64	1	44	5.28
10"	2.5	3.5	1.8	1	1	140	1.03	1	44	2.06	2	44	4.12	2	44	8.24
12"	4	5.5	2.8	1.5	1	160	1.48	2	44	2.96	2	44	5.92	2	44	11.84
14"	6	8	4	2	1.5	180	2.01	2	44	4.02	2	44	8.04	2	44	16.08
16"	8	11	5.5	3	2	200	2.63	2	44	5.26	2	44	10.52	2	44	21.04
18"	10	14.2	7	4	3	220	3.33	2	44	6.66	2	44	13.32	2	44	26.64
20"	12	16	8	5	4	240	4.11	2	44	8.22	2	44	16.44	2	44	32.88
24"	18	24	12	7	6	300	5.16	2	44	10.32	2	44	20.64	2	44	41.28
30"	28	38	20	10	7	360	6.39	2	44	12.78	2	44	25.56	2	44	51.12
36"	38	52	28	14	10	420	7.71	2	44	15.42	2	44	30.84	2	44	61.68
42"	48	66	36	18	14	480	9.15	2	44	18.30	2	44	36.60	2	44	73.20
48"	58	80	44	23	18	540	10.71	2	44	21.42	2	44	42.84	2	44	85.68

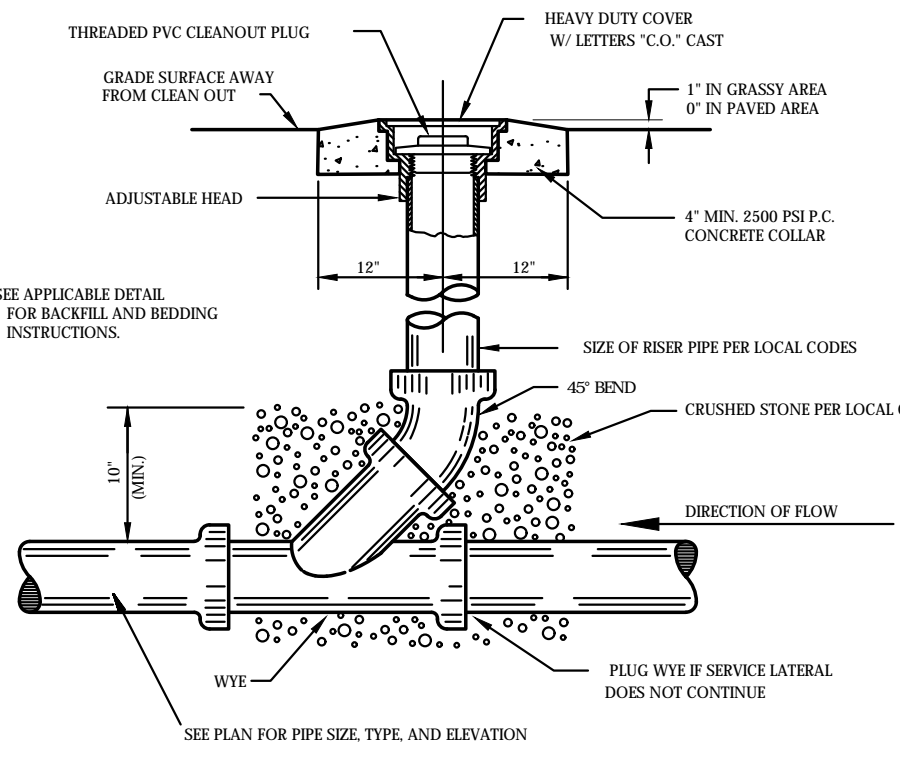
VERTICAL FITTINGS

NOTES:
1. DO NOT COVER BELLS OR FLANGES WITH CONCRETE
2. WAP ALL FITTINGS WITH VESICONS
3. BACK ALL TEES ACCORDING TO SIZE OF BRANCH
4. BACKING FITTING LINE EXTENSIONS SHALL BE SUCH THAT LATER REMOVAL IS POSSIBLE
5. ALL BENDS WHERE FITTINGS ARE USED, BOTH HORIZONTAL OR VERTICAL SHALL BE BACKED
6. BACKING TABLE IS BASED ON 100 P.S.I. AND SOIL BEARING PRESSURE OF 2,500 P.S.I. ADDITIONAL BACKING MAY BE REQUIRED IN SOME AREAS AS DIRECTED BY ENGINEERS
7. ALL CONCRETE SHALL BE 3000 P.S.I.

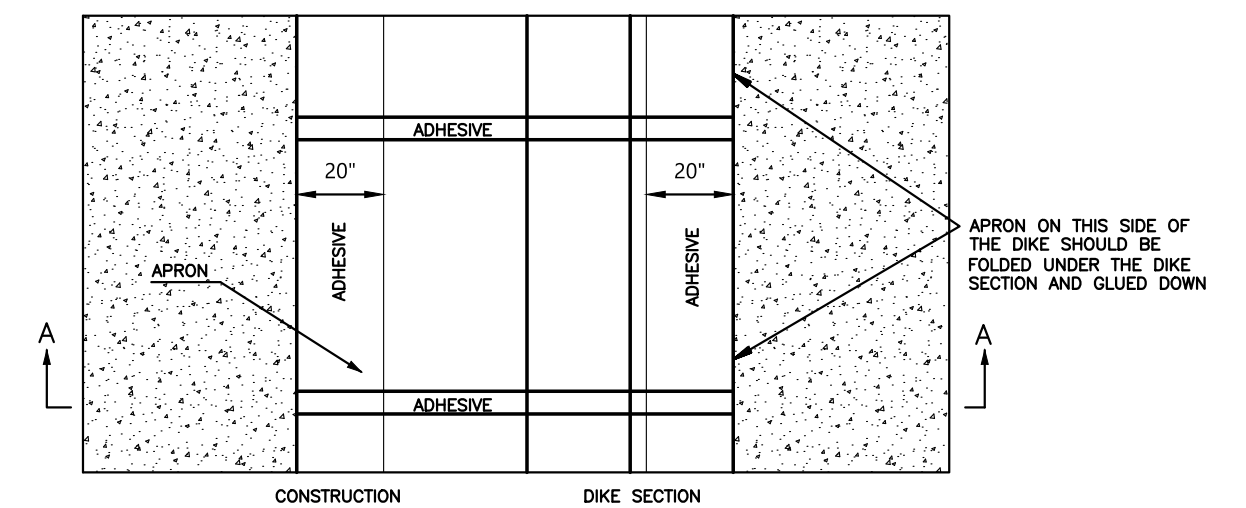
THRUST BLOCKING
N.T.S.



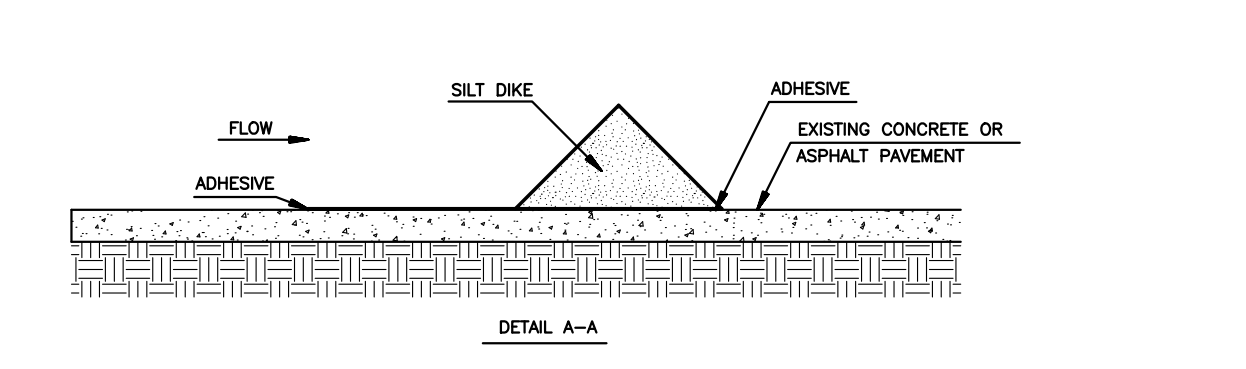
VERTICAL FITTINGS



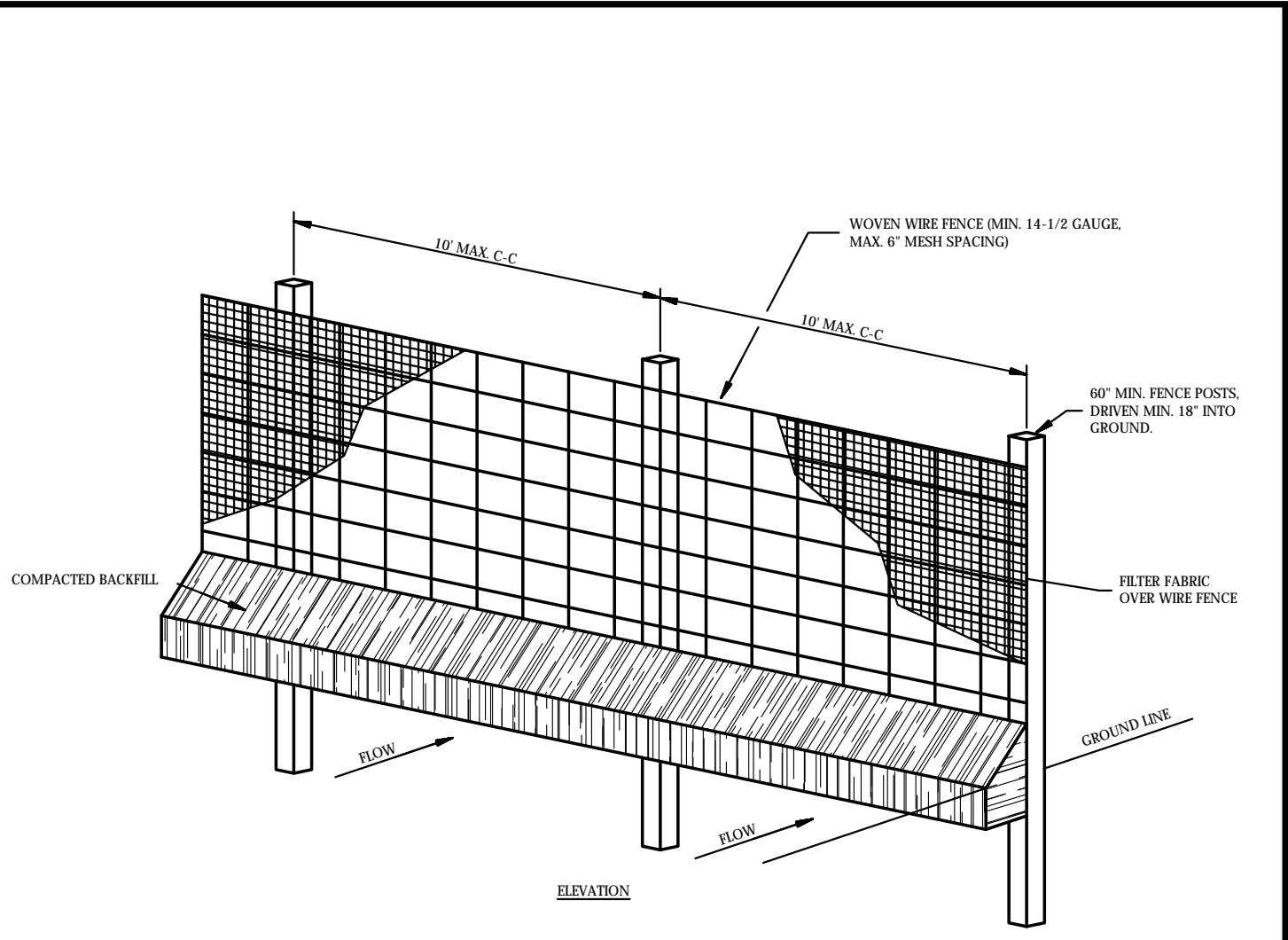
SANITARY SEWER CLEAN-OUT
N.T.S.



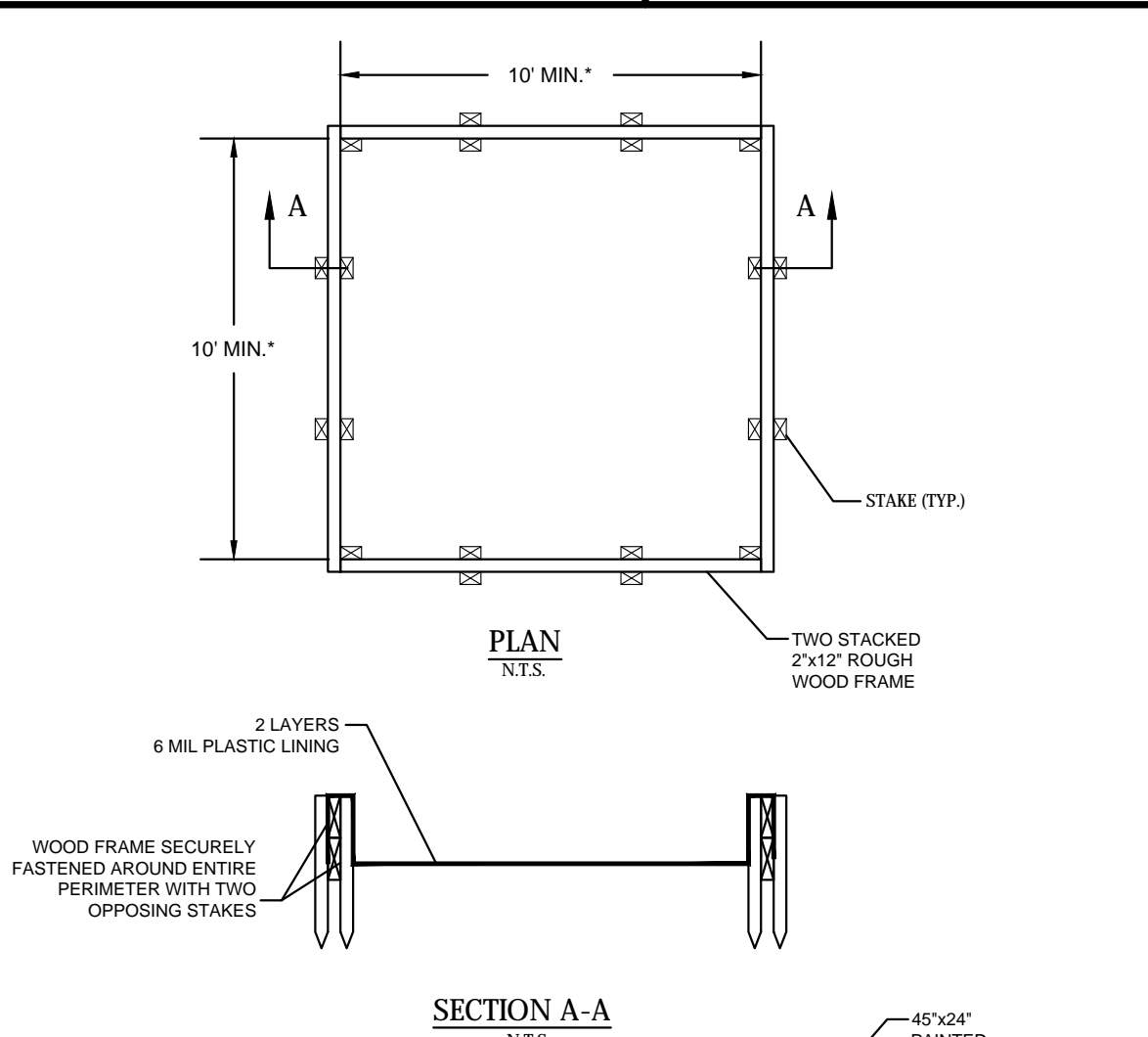
ADHESIVES:
CONCRETE PAVEMENT USE LIQUID NAIL OR APPROVED EQUAL.
ASPHALT PAVEMENT USE ENHANCED ASPHALT.
ADHESIVE SHALL BE PLACED WHERE THE UNITS OVERLAP AND A 20\"/>



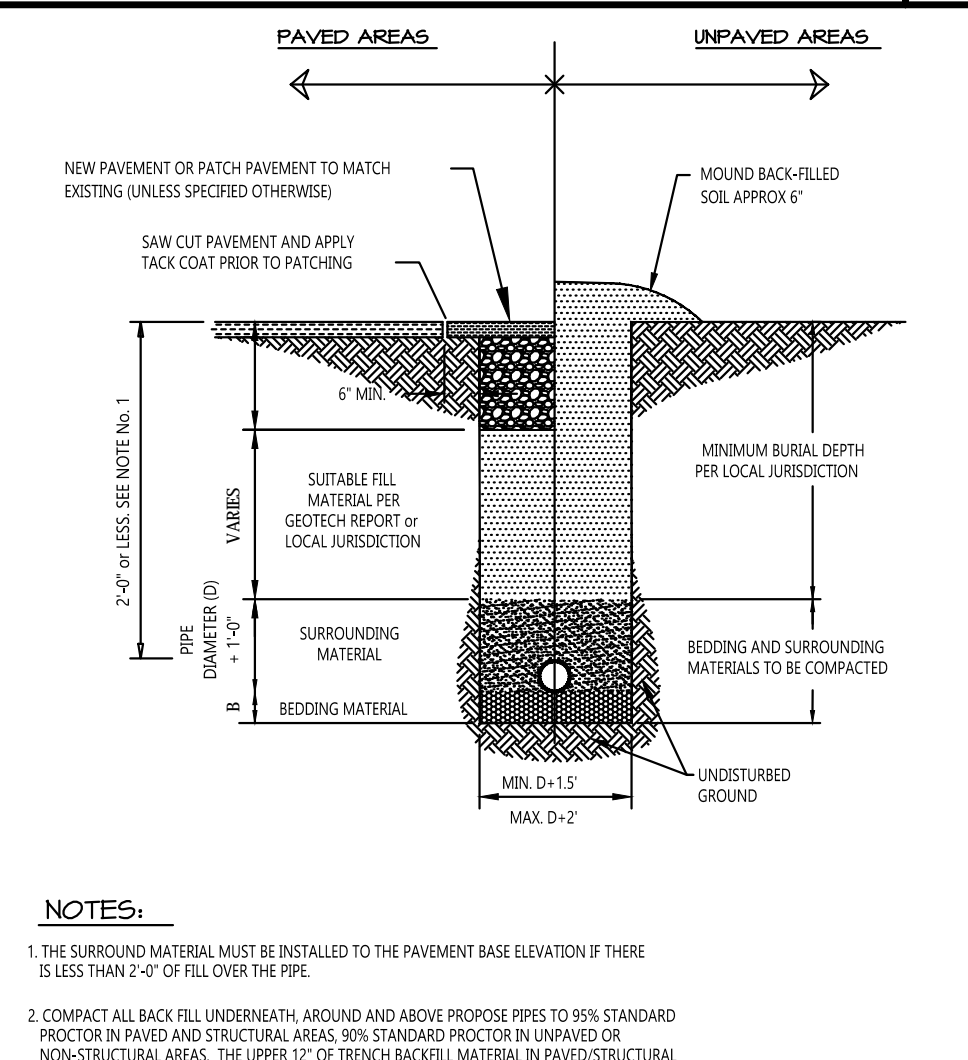
SILT DIKE (ON EXISTING PAVEMENT)
N.T.S.



TEMPORARY SILT FENCE
N.T.S.



TEMPORARY CONCRETE WASHOUT (ABOVE GRADE)
N.T.S.



TRENCH DETAIL MASTER SPECIFICATION DETAIL
N.T.S.

RECOMMENDED FILL MATERIALS

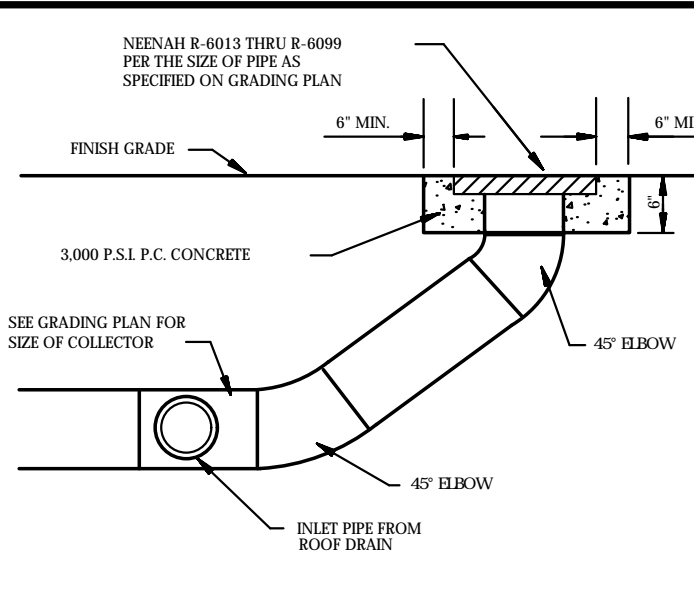
TYPE OF PIPE	SURROUNDING MATERIAL TYPE	B-DIMENSION	BEDDING MATERIAL TYPE
DUCTILE IRON PIPE	"A", "B", OR "C"	3"	SAND OR "C"
RCP PIPE	"B" OR "C"	3"	SAND OR "C"
ALL PIPE OVER BEDROCK OR LEDGE	"B" OR "C"	6"	SAND OR "C"
RCP PIPE IN CLAY	"B" OR "C"	6"	SAND
PLASTIC-ALL	"C"	6"	SAND OR "C"

NOTES:
1. THE SURROUNDING MATERIAL MUST BE INSTALLED TO THE PAVEMENT BASE ELEVATION IF THERE IS LESS THAN 2\"/>

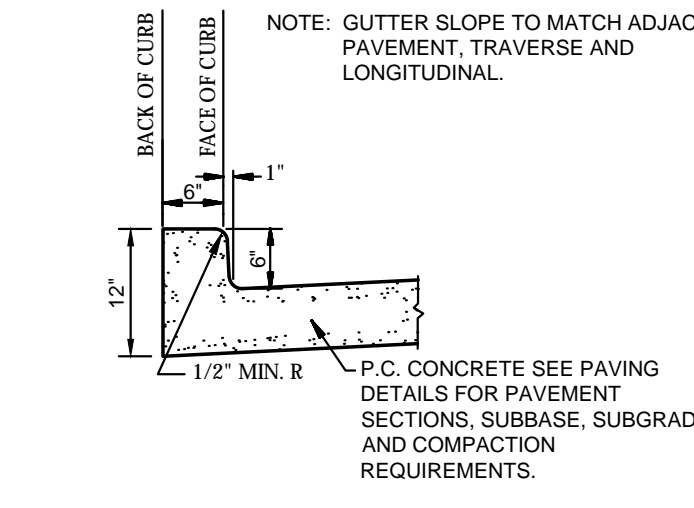
RECOMMENDED FILL MATERIALS
TYPE OF PIPE SURROUNDING MATERIAL TYPE B-DIMENSION BEDDING MATERIAL TYPE
DUCTILE IRON PIPE "A", "B", OR "C" 3" SAND OR "C"
RCP PIPE "B" OR "C" 3" SAND OR "C"
ALL PIPE OVER BEDROCK OR LEDGE "B" OR "C" 6" SAND OR "C"
RCP PIPE IN CLAY "B" OR "C" 6" SAND
PLASTIC-ALL "C" 6" SAND OR "C"

RECOMMENDED FILL MATERIALS
CONTRACTOR SHALL ENSURE COMPLIANCE WITH LOCAL JURISDICTION AND/OR THE RECOMMENDATIONS OF THE GEOTECHNICAL ENGINEER.
MATERIAL TYPES:
"A" GRAVEL OR ENHANCED MATERIAL WHICH HAS NO STONES GREATER THAN 1 1/2\"/>

TRENCH DETAIL MASTER SPECIFICATION DETAIL
N.T.S.



STORM DRAIN CLEAN-OUT
N.T.S.



TYPE "B" CONCRETE INTEGRAL CURB AND GUTTER
N.T.S.

JOB # 208752 DRAWING# 208752-01 SHEET# 08 OF 10 PROJECT# 208752-01 DRAWINGS DESIGNER: SULLIVAN, DATE: 7/24/17, CS: chg

AS-BUILT DRAWING BASED SOLELY ON A SKETCH PROVIDED BY COYOTE CONTRACTORS DATED 7-19-2017. CEI ENGINEERING ASSUMES NO RESPONSIBILITY FOR THE ACCURACY OR COMPLETENESS OF THIS PLAN



26873 7/24/17 ADS JEE JPS JPS
CEI PROJECT NO. INITIAL DATE DPOR PM DES DRW

CEI Engineering Associates, Inc.
ENGINEERS PLANNERS SURVEYORS
LANDSCAPE ARCHITECTS ENVIRONMENTAL SCIENTISTS

4800 Sugar Grove Blvd, Suite 316 (281)494-0309
Stafford, TX 77477 (281)494-0360

KROGER SW870 FUEL CENTER
3770 BELTLINE RD TX
ADDISON TX

DETAIL SHEET 1 REV DATE 7/24/17 SHEET NO. C8
AS-BUILT

12/15/2017