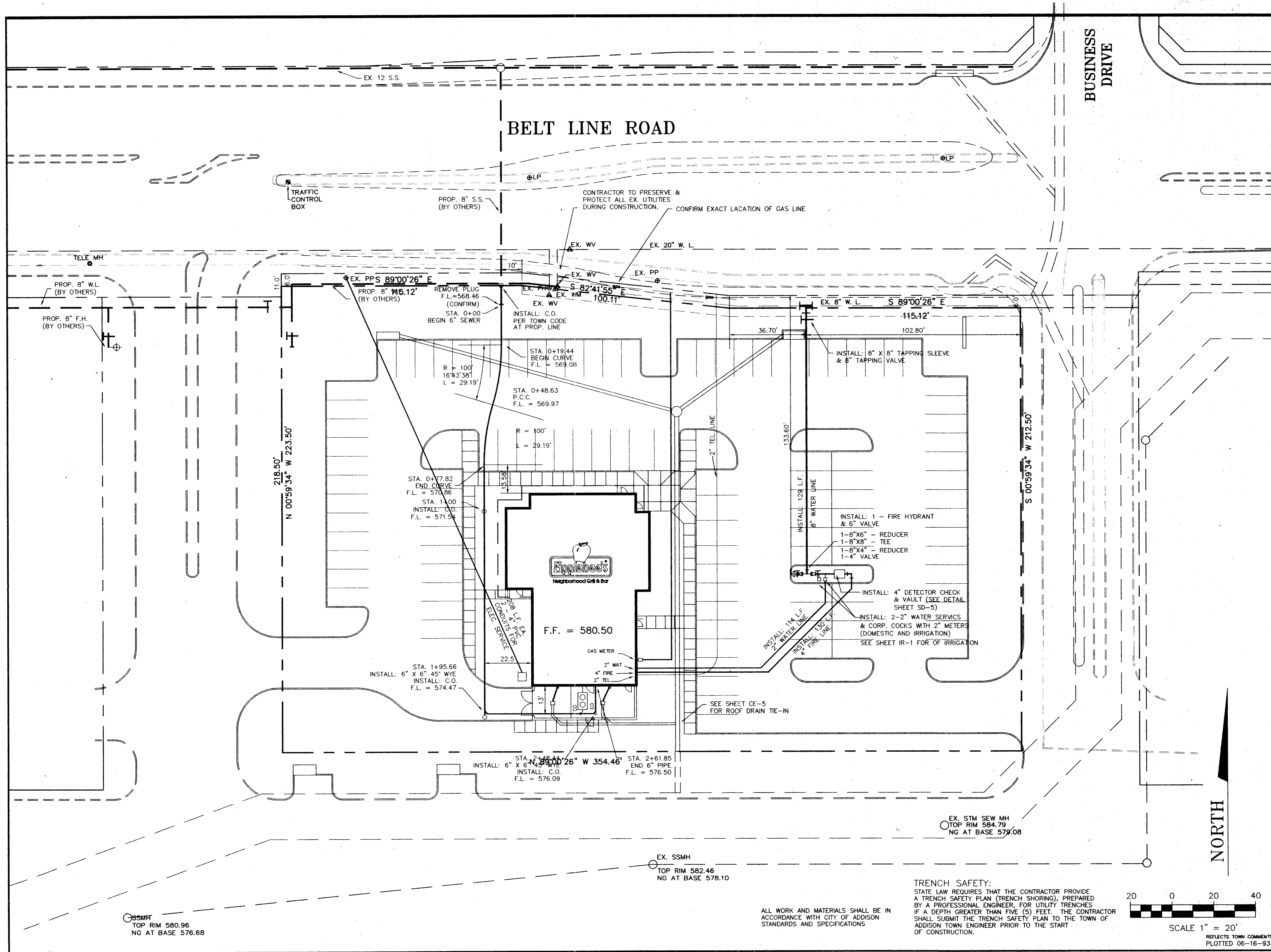
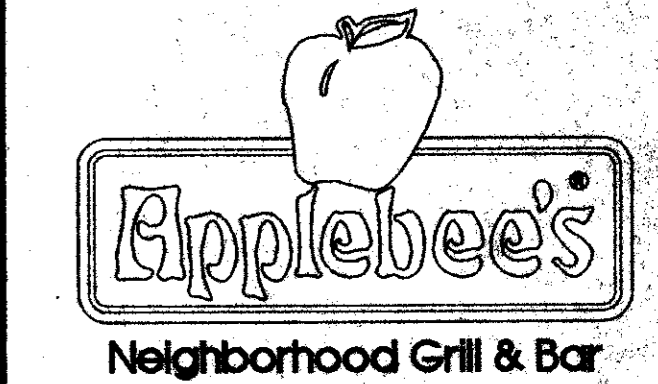


NOTES

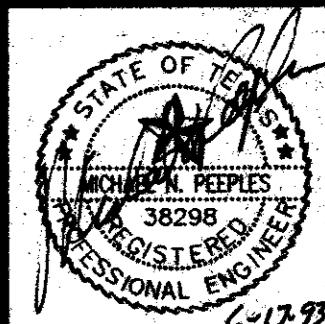
1. SEE SHEETS SD-1 THROUGH SD-6 FOR WATER, SEWER, AND DRAINAGE DETAILS.
2. SEE SHEET SD-5 FOR DETECTOR CHECK CHECK DETAILS.
3. ALL UTILITIES SHALL BE ADJUSTED TO FINAL GRADES PRIOR TO ISSUANCE OF CERTIFICATE OF OCCUPANCY.



MP MICHAEL PEEPLES
 Engineers and Planners
 (214) 248-1988
 4660 Sunbelt Dallas, Texas 75248



UTILITIES PLAN



CE-3
 ADDISON, TEXAS

NORTH



SCALE 1" = 20'

REFLECTS TOWN COMMENTS
 PLOTTED 06-16-93

TRENCH SAFETY:

STATE LAW REQUIRES THAT THE CONTRACTOR PROVIDE A TRENCH SAFETY PLAN (TRENCH SHORING), PREPARED BY A PROFESSIONAL ENGINEER, FOR UTILITY TRENCHES IF A DEPTH GREATER THAN FIVE (5) FEET. THE CONTRACTOR SHALL SUBMIT THE TRENCH SAFETY PLAN TO THE TOWN OF ADDISON TOWN ENGINEER PRIOR TO THE START OF CONSTRUCTION.

ALL WORK AND MATERIALS SHALL BE IN ACCORDANCE WITH CITY OF ADDISON STANDARDS AND SPECIFICATIONS

SSMH
 TOP RIM 580.96
 NG AT BASE 576.68

EX. SSMH
 TOP RIM 582.46
 NG AT BASE 578.10

EX. STM SEW MH
 TOP RIM 584.79
 NG AT BASE 579.08