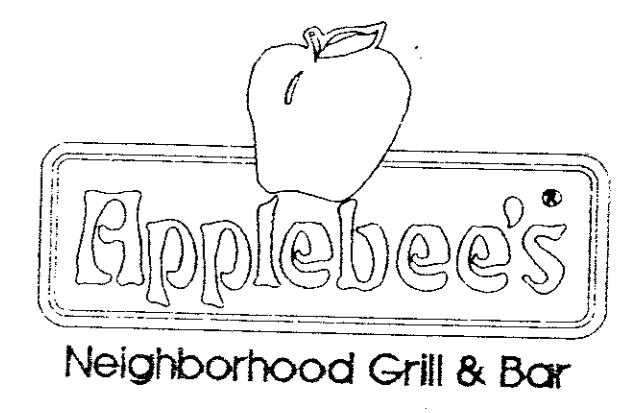


NOTES

1. SEE SHEETS SD-1 THROUGH SD-5 FOR WATER, SEWER, AND DRAIN DETAILS.
2. SEE SHEET SD-5 FOR DETECTOR CHECK DETAILS.
3. ALL UTILITIES SHALL BE ADJUSTED TO FINAL GRADES PRIOR TO ISSUANCE OF CERTIFICATE OF OCCUPANCY.

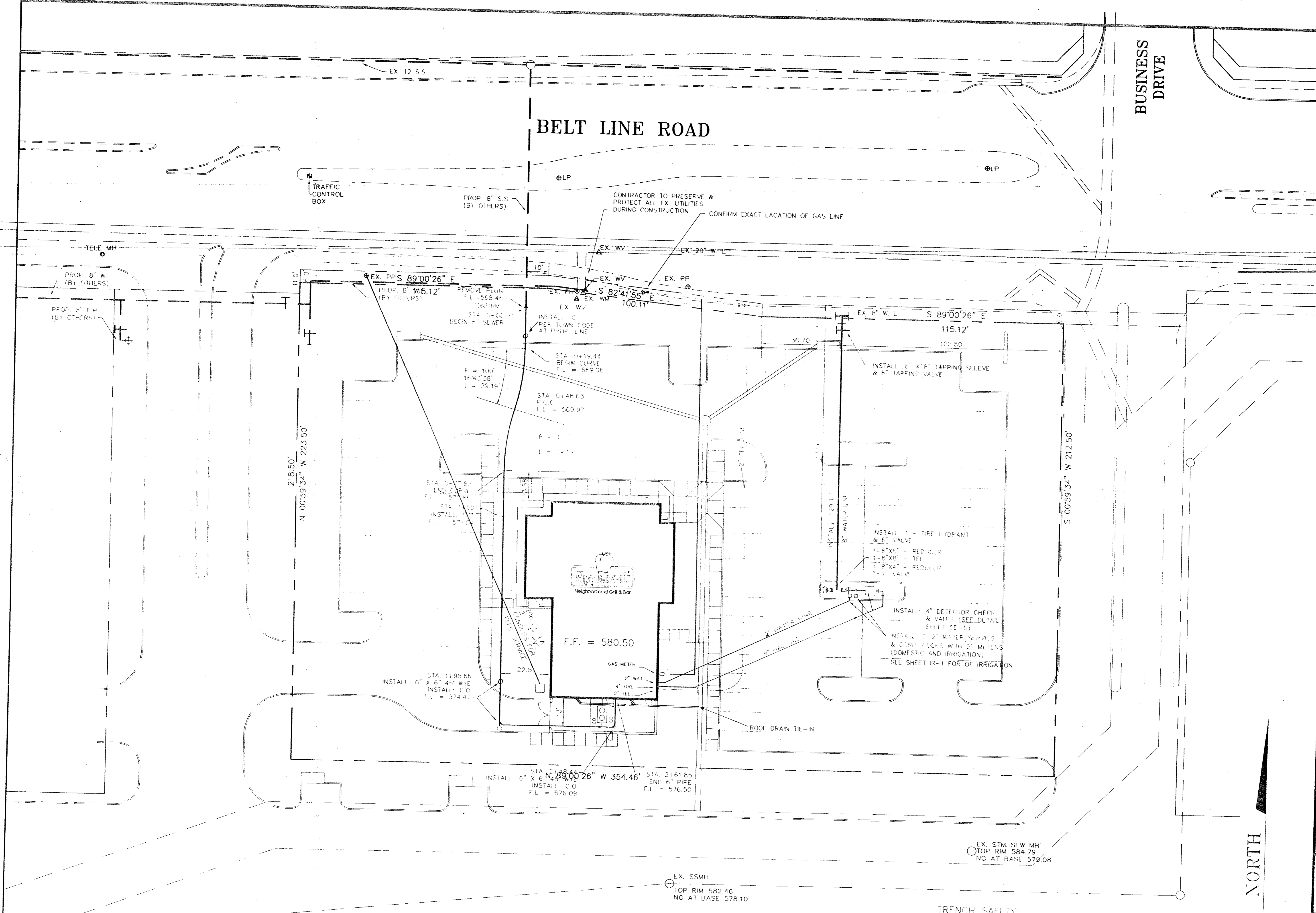
*As Built
Utility
Plan
11-1-93
Parkway
Construction*

MP MICHAEL PEEPLES
Engineers and Planner
(214) 248-1968
4660 Sunbelt Dallas, Texas 75241



UTILITIES PLAN

CE-3
ADDITION, TEXAS
6-17-93



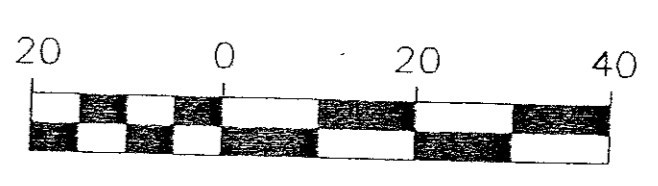
SSMH
TOP RIM 580.96
NG AT BASE 576.68

EX. SSMH
TOP RIM 582.46
NG AT BASE 578.10

EX. STM SEW MH
TOP RIM 584.79
NG AT BASE 578.08

ALL WORK AND MATERIALS SHALL BE IN ACCORDANCE WITH CITY OF ADDISON STANDARDS AND SPECIFICATIONS

TRENCH SAFETY:
STATE LAW REQUIRES THAT THE CONTRACTOR PROVIDE A TRENCH SAFETY PLAN (TRENCH SHORING), PREPARED BY A PROFESSIONAL ENGINEER, FOR UTILITY TRENCHES IF A DEPTH GREATER THAN FIVE (5) FEET. THE CONTRACTOR SHALL SUBMIT THE TRENCH SAFETY PLAN TO THE TOWN OF ADDISON TOWN ENGINEER PRIOR TO THE START OF CONSTRUCTION.



SCALE 1" = 20'

REFLECTS TOWN COMMENTS
PLOTTED 06-16-93

