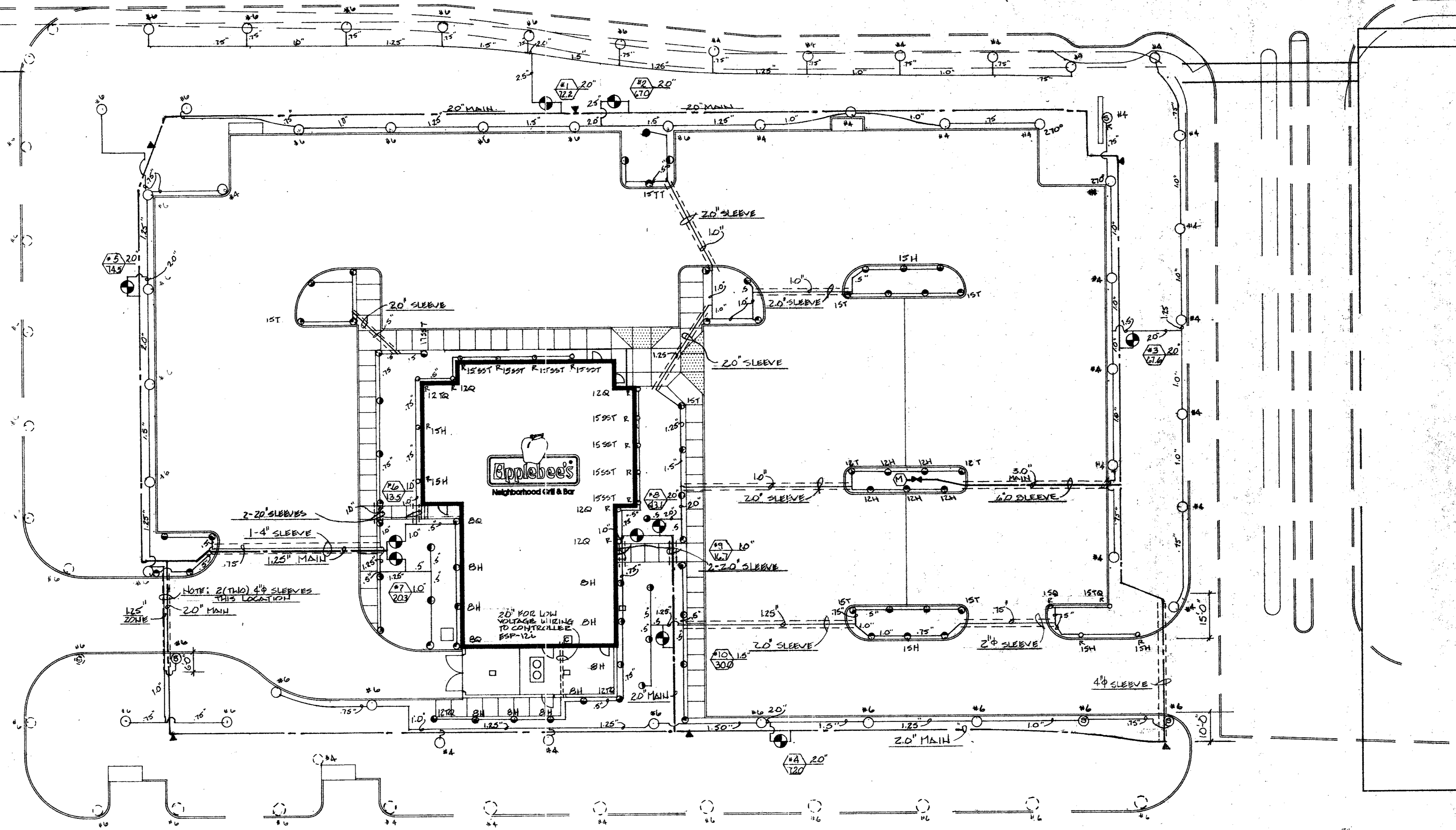


150000

- 1. Use 2" HDPE and 4" PVC Adapter on Curbside 24" cover pipe
- 2. Use 2" HDPE pipe with 4" PVC Adapter on Curbside 24" cover pipe
- 3. Use 2" HDPE pipe with 4" PVC Adapter on Curbside 24" cover pipe
- 4. Use 2" HDPE pipe with 4" PVC Adapter on Curbside 24" cover pipe
- 5. Use 2" HDPE pipe with 4" PVC Adapter on Curbside 24" cover pipe
- 6. Use 2" HDPE pipe with 4" PVC Adapter on Curbside 24" cover pipe
- 7. Use 2" HDPE pipe with 4" PVC Adapter on Curbside 24" cover pipe
- 8. Use 2" HDPE pipe with 4" PVC Adapter on Curbside 24" cover pipe
- 9. Use 2" HDPE pipe with 4" PVC Adapter on Curbside 24" cover pipe
- 10. Use 2" HDPE pipe with 4" PVC Adapter on Curbside 24" cover pipe
- 11. Use 2" HDPE pipe with 4" PVC Adapter on Curbside 24" cover pipe
- 12. Use 2" HDPE pipe with 4" PVC Adapter on Curbside 24" cover pipe
- 13. Use 2" HDPE pipe with 4" PVC Adapter on Curbside 24" cover pipe
- 14. Use 2" HDPE pipe with 4" PVC Adapter on Curbside 24" cover pipe
- 15. Use 2" HDPE pipe with 4" PVC Adapter on Curbside 24" cover pipe
- 16. Use 2" HDPE pipe with 4" PVC Adapter on Curbside 24" cover pipe
- 17. Use 2" HDPE pipe with 4" PVC Adapter on Curbside 24" cover pipe
- 18. Use 2" HDPE pipe with 4" PVC Adapter on Curbside 24" cover pipe
- 19. Use 2" HDPE pipe with 4" PVC Adapter on Curbside 24" cover pipe
- 20. Use 2" HDPE pipe with 4" PVC Adapter on Curbside 24" cover pipe
- 21. Use 2" HDPE pipe with 4" PVC Adapter on Curbside 24" cover pipe
- 22. Use 2" HDPE pipe with 4" PVC Adapter on Curbside 24" cover pipe
- 23. Use 2" HDPE pipe with 4" PVC Adapter on Curbside 24" cover pipe
- 24. Use 2" HDPE pipe with 4" PVC Adapter on Curbside 24" cover pipe
- 25. Use 2" HDPE pipe with 4" PVC Adapter on Curbside 24" cover pipe
- 26. Use 2" HDPE pipe with 4" PVC Adapter on Curbside 24" cover pipe
- 27. Use 2" HDPE pipe with 4" PVC Adapter on Curbside 24" cover pipe
- 28. Use 2" HDPE pipe with 4" PVC Adapter on Curbside 24" cover pipe
- 29. Use 2" HDPE pipe with 4" PVC Adapter on Curbside 24" cover pipe
- 30. Use 2" HDPE pipe with 4" PVC Adapter on Curbside 24" cover pipe
- 31. Use 2" HDPE pipe with 4" PVC Adapter on Curbside 24" cover pipe
- 32. Use 2" HDPE pipe with 4" PVC Adapter on Curbside 24" cover pipe
- 33. Use 2" HDPE pipe with 4" PVC Adapter on Curbside 24" cover pipe
- 34. Use 2" HDPE pipe with 4" PVC Adapter on Curbside 24" cover pipe
- 35. Use 2" HDPE pipe with 4" PVC Adapter on Curbside 24" cover pipe
- 36. Use 2" HDPE pipe with 4" PVC Adapter on Curbside 24" cover pipe
- 37. Use 2" HDPE pipe with 4" PVC Adapter on Curbside 24" cover pipe
- 38. Use 2" HDPE pipe with 4" PVC Adapter on Curbside 24" cover pipe
- 39. Use 2" HDPE pipe with 4" PVC Adapter on Curbside 24" cover pipe
- 40. Use 2" HDPE pipe with 4" PVC Adapter on Curbside 24" cover pipe
- 41. Use 2" HDPE pipe with 4" PVC Adapter on Curbside 24" cover pipe
- 42. Use 2" HDPE pipe with 4" PVC Adapter on Curbside 24" cover pipe
- 43. Use 2" HDPE pipe with 4" PVC Adapter on Curbside 24" cover pipe
- 44. Use 2" HDPE pipe with 4" PVC Adapter on Curbside 24" cover pipe
- 45. Use 2" HDPE pipe with 4" PVC Adapter on Curbside 24" cover pipe
- 46. Use 2" HDPE pipe with 4" PVC Adapter on Curbside 24" cover pipe
- 47. Use 2" HDPE pipe with 4" PVC Adapter on Curbside 24" cover pipe
- 48. Use 2" HDPE pipe with 4" PVC Adapter on Curbside 24" cover pipe
- 49. Use 2" HDPE pipe with 4" PVC Adapter on Curbside 24" cover pipe
- 50. Use 2" HDPE pipe with 4" PVC Adapter on Curbside 24" cover pipe
- 51. Use 2" HDPE pipe with 4" PVC Adapter on Curbside 24" cover pipe
- 52. Use 2" HDPE pipe with 4" PVC Adapter on Curbside 24" cover pipe
- 53. Use 2" HDPE pipe with 4" PVC Adapter on Curbside 24" cover pipe
- 54. Use 2" HDPE pipe with 4" PVC Adapter on Curbside 24" cover pipe
- 55. Use 2" HDPE pipe with 4" PVC Adapter on Curbside 24" cover pipe
- 56. Use 2" HDPE pipe with 4" PVC Adapter on Curbside 24" cover pipe
- 57. Use 2" HDPE pipe with 4" PVC Adapter on Curbside 24" cover pipe
- 58. Use 2" HDPE pipe with 4" PVC Adapter on Curbside 24" cover pipe
- 59. Use 2" HDPE pipe with 4" PVC Adapter on Curbside 24" cover pipe
- 60. Use 2" HDPE pipe with 4" PVC Adapter on Curbside 24" cover pipe
- 61. Use 2" HDPE pipe with 4" PVC Adapter on Curbside 24" cover pipe
- 62. Use 2" HDPE pipe with 4" PVC Adapter on Curbside 24" cover pipe
- 63. Use 2" HDPE pipe with 4" PVC Adapter on Curbside 24" cover pipe
- 64. Use 2" HDPE pipe with 4" PVC Adapter on Curbside 24" cover pipe
- 65. Use 2" HDPE pipe with 4" PVC Adapter on Curbside 24" cover pipe
- 66. Use 2" HDPE pipe with 4" PVC Adapter on Curbside 24" cover pipe
- 67. Use 2" HDPE pipe with 4" PVC Adapter on Curbside 24" cover pipe
- 68. Use 2" HDPE pipe with 4" PVC Adapter on Curbside 24" cover pipe
- 69. Use 2" HDPE pipe with 4" PVC Adapter on Curbside 24" cover pipe
- 70. Use 2" HDPE pipe with 4" PVC Adapter on Curbside 24" cover pipe
- 71. Use 2" HDPE pipe with 4" PVC Adapter on Curbside 24" cover pipe
- 72. Use 2" HDPE pipe with 4" PVC Adapter on Curbside 24" cover pipe
- 73. Use 2" HDPE pipe with 4" PVC Adapter on Curbside 24" cover pipe
- 74. Use 2" HDPE pipe with 4" PVC Adapter on Curbside 24" cover pipe
- 75. Use 2" HDPE pipe with 4" PVC Adapter on Curbside 24" cover pipe
- 76. Use 2" HDPE pipe with 4" PVC Adapter on Curbside 24" cover pipe
- 77. Use 2" HDPE pipe with 4" PVC Adapter on Curbside 24" cover pipe
- 78. Use 2" HDPE pipe with 4" PVC Adapter on Curbside 24" cover pipe
- 79. Use 2" HDPE pipe with 4" PVC Adapter on Curbside 24" cover pipe
- 80. Use 2" HDPE pipe with 4" PVC Adapter on Curbside 24" cover pipe
- 81. Use 2" HDPE pipe with 4" PVC Adapter on Curbside 24" cover pipe
- 82. Use 2" HDPE pipe with 4" PVC Adapter on Curbside 24" cover pipe
- 83. Use 2" HDPE pipe with 4" PVC Adapter on Curbside 24" cover pipe
- 84. Use 2" HDPE pipe with 4" PVC Adapter on Curbside 24" cover pipe
- 85. Use 2" HDPE pipe with 4" PVC Adapter on Curbside 24" cover pipe
- 86. Use 2" HDPE pipe with 4" PVC Adapter on Curbside 24" cover pipe
- 87. Use 2" HDPE pipe with 4" PVC Adapter on Curbside 24" cover pipe
- 88. Use 2" HDPE pipe with 4" PVC Adapter on Curbside 24" cover pipe
- 89. Use 2" HDPE pipe with 4" PVC Adapter on Curbside 24" cover pipe
- 90. Use 2" HDPE pipe with 4" PVC Adapter on Curbside 24" cover pipe
- 91. Use 2" HDPE pipe with 4" PVC Adapter on Curbside 24" cover pipe
- 92. Use 2" HDPE pipe with 4" PVC Adapter on Curbside 24" cover pipe
- 93. Use 2" HDPE pipe with 4" PVC Adapter on Curbside 24" cover pipe
- 94. Use 2" HDPE pipe with 4" PVC Adapter on Curbside 24" cover pipe
- 95. Use 2" HDPE pipe with 4" PVC Adapter on Curbside 24" cover pipe
- 96. Use 2" HDPE pipe with 4" PVC Adapter on Curbside 24" cover pipe
- 97. Use 2" HDPE pipe with 4" PVC Adapter on Curbside 24" cover pipe
- 98. Use 2" HDPE pipe with 4" PVC Adapter on Curbside 24" cover pipe
- 99. Use 2" HDPE pipe with 4" PVC Adapter on Curbside 24" cover pipe
- 100. Use 2" HDPE pipe with 4" PVC Adapter on Curbside 24" cover pipe

BELT LINE ROAD

BUSINESS DRIVE



NOTES

The static water pressure shall be taken prior to system installation. The minimum reading shall not be lower than 24 PSI. If lower, contact the landscape architect immediately.

The 120 volt electrical service for the controller is to be provided by the general contractor and located in the mechanical room. A 3-Box shall be provided in an exterior well and a sleeve shall also be provided through the well or buried up through the floor adjacent to the exterior well.

All 24 volt wires shall be UL-18F minimum #14 gauge single-wire cable. No wire splices in the field will be allowed except in valve boxes. End of wires to the mechanical equipment room.

All heads shall be located 4" off any hard surface area and be set perpendicular and flush to grade.

The LIC is responsible for installing the sleeves and any boring that may be required to route piping under paving. Sleeves shall be 4" Class 200 PVC unless noted.

The LIC is responsible for ensuring that this irrigation system and installation shall conform to all applicable state and local laws, regulations, etc.

The 2" main shall be provided by the owner or the general contractor.

All zone valves shall be installed in 6" valve boxes.

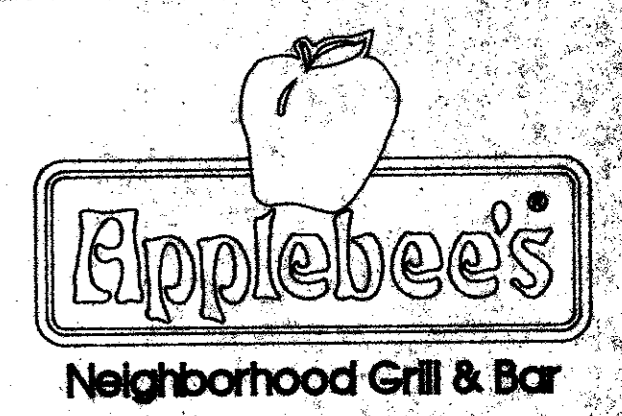
SPECIAL NOTES

Sleeves shall be extended as noted in order to extend beyond landscape areas.

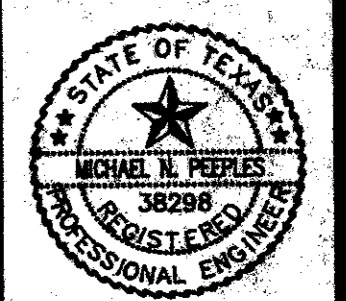
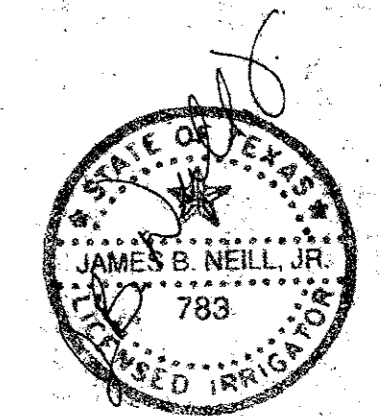
All lateral lines to heads located adjacent to sidewalk along Belt Line Road shall be a minimum 3'-0" long from zone line for future relocation of sidewalk.

All valves and quick couplers shall be located by dimensions from two points (use curb corner and distance out from one curb). The dimensions and any changes made during construction shall be made on the drawing and given to Engineer and Owner for as-built drawings.

MP MICHAEL PEEPLES
Engineers and Planners
(214) 248-1988
1800 Sunbelt Dallas, Texas 75246



IRRIGATION PLAN



IR-1
ADDISON, TEXAS