

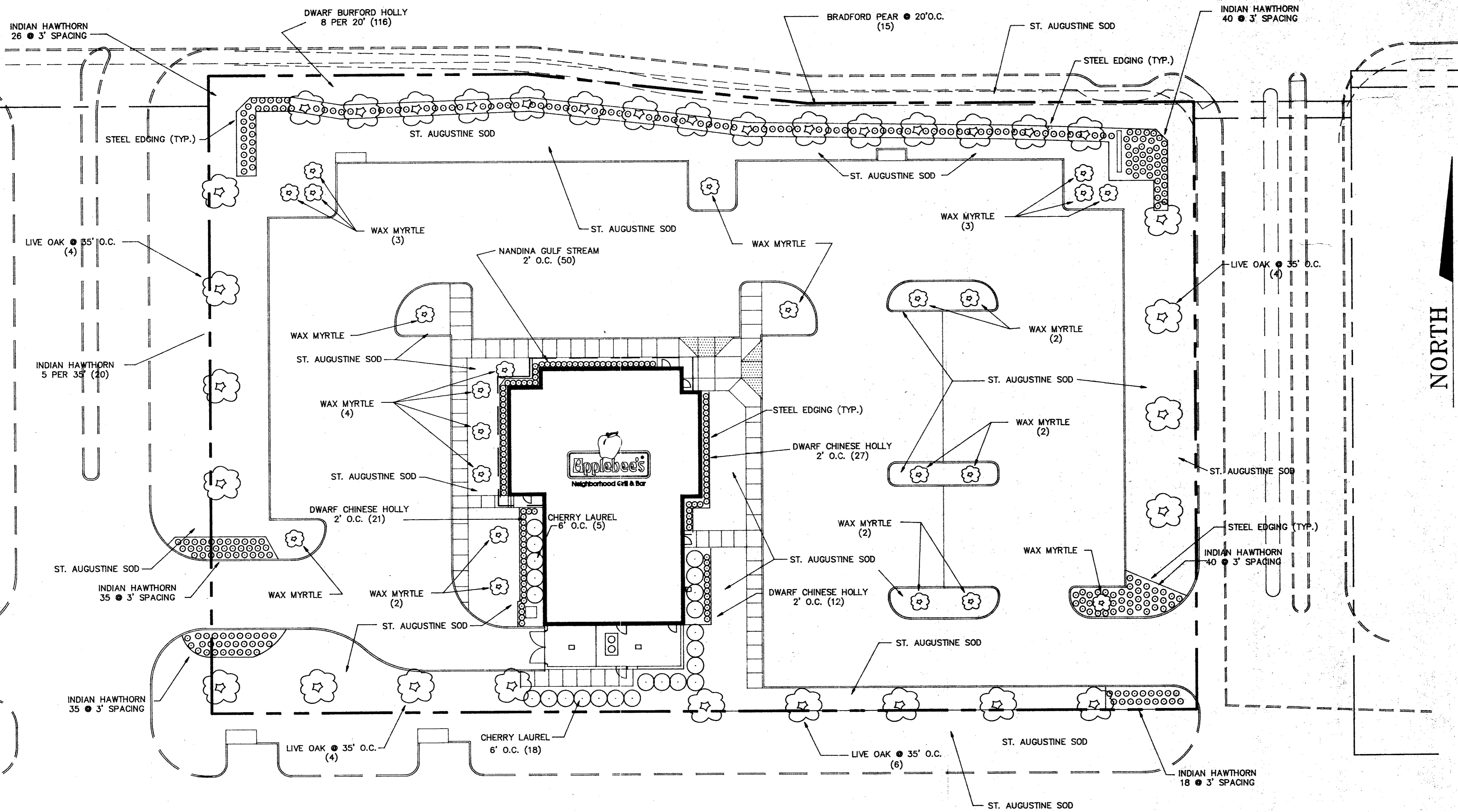
PLANT MATERIALS LIST

Common/Botanical Name	Size	Quantity	Spacing	Remarks
Cherry Laurel/Prunus caroliniana 'Bright n' Light'	15" gallon	23	8'0" o.c.	Min. spread 15'-18"; min. ht. 4'
Dwarf Burford Holly/Ilex cornuta 'Burford Nano'	5 gallon	81	As Shown	Full plants, min. 24" ht.
Dwarf Chinese Holly/Ilex cornuta 'Rotundo'	5 gallon	82	2'0" o.c.	Full plants, min. 24" ht.
Nandina 'Gulfstream'/Nandina domestica 'Compacta Gulfstream'	5 gallon	50	2'0" o.c.	Full plants, min. 18" ht.
Indian Hawthorn/Rhodopala indica	5 gallon	145	As Shown	Full plants, well rooted
Wax Myrtle/Lyrica Carliera	8"-10" ht.	23	As Shown	16" x 24" Root and Ball nursery grown
Live Oak/Quercus virginiana	3" Single Trunk	17	35' o.c.	12' min. ht., 8' min. spread
Bradford Pear/Pyrus Calleryana 'Bradford'	3" Single Trunk	15	20' o.c.	12' min. ht., 8' min. spread

BELT LINE ROAD

BUSINESS DRIVE

NOTES  
SEE SHEET LS-2 FOR LANDSCAPE NOTES AND DETAILS



DATE PLOTTED: 3-26-93

**MP** MICHAEL PEEPLES  
Engineers and Planners  
214 248-1888  
1680 Sunbelt Dallas, Texas 75248

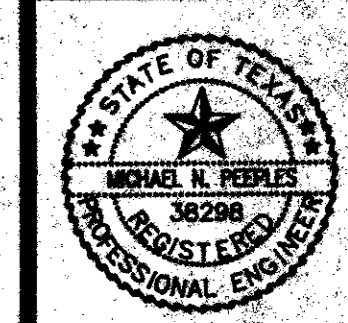


LANDSCAPE PLAN

LANDSCAPE DATA

1. SITE AREA	= 75,006 SQ.FT.
2. LANDSCAPE AREA REQUIRED	= 15,001 SQ.FT.
3. TOTAL LANDSCAPE AREA PROVIDED	= 22,789 SQ.FT.
4. PARKING, MEDIAN, & DRIVES AREA	= 10,733 SQ.FT.
5. INTERIOR LANDSCAPE AREA REQUIRED	= 2,071 SQ.FT.
6. INTERIOR LANDSCAPE AREA PROVIDED	= 6,138 SQ.FT.
7. PARKING LOT PERIMETER TREES REQUIRED	= 38
8. PARKING LOT PERIMETER TREES PROVIDED	= 33

PLOTTED 5-21-93



LS-1

ADDISON, TEXAS