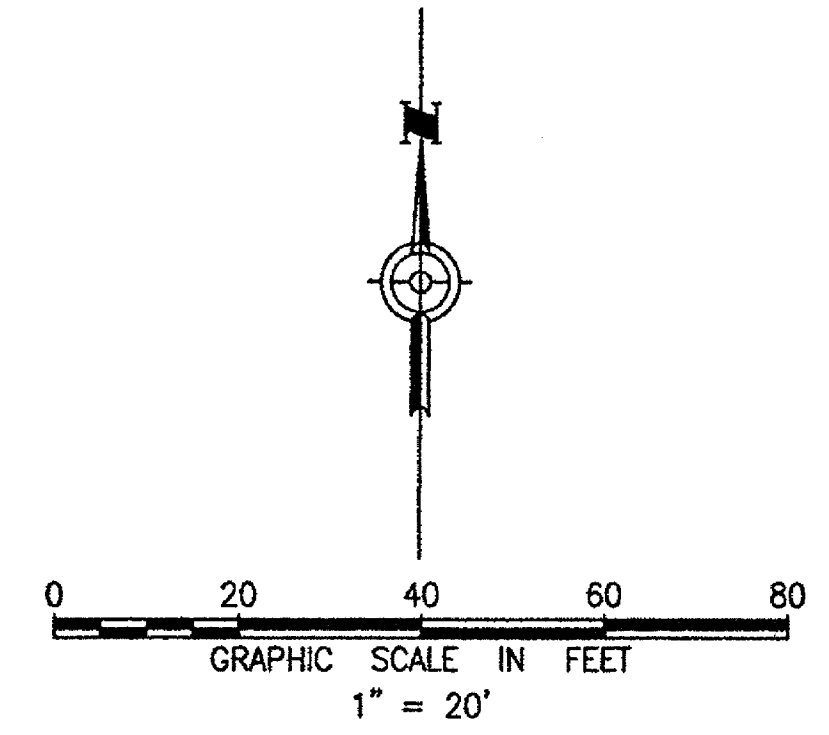
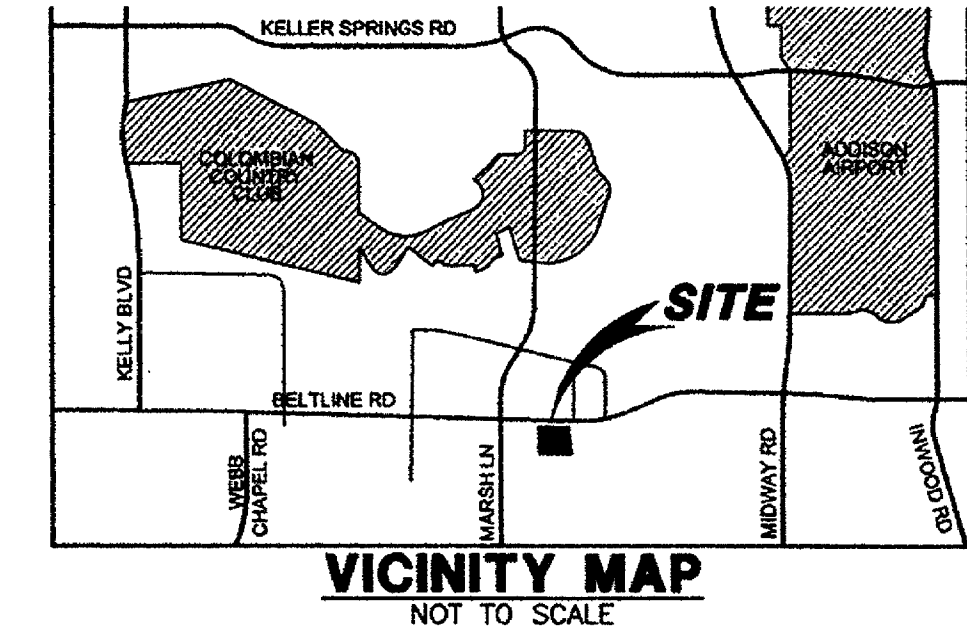
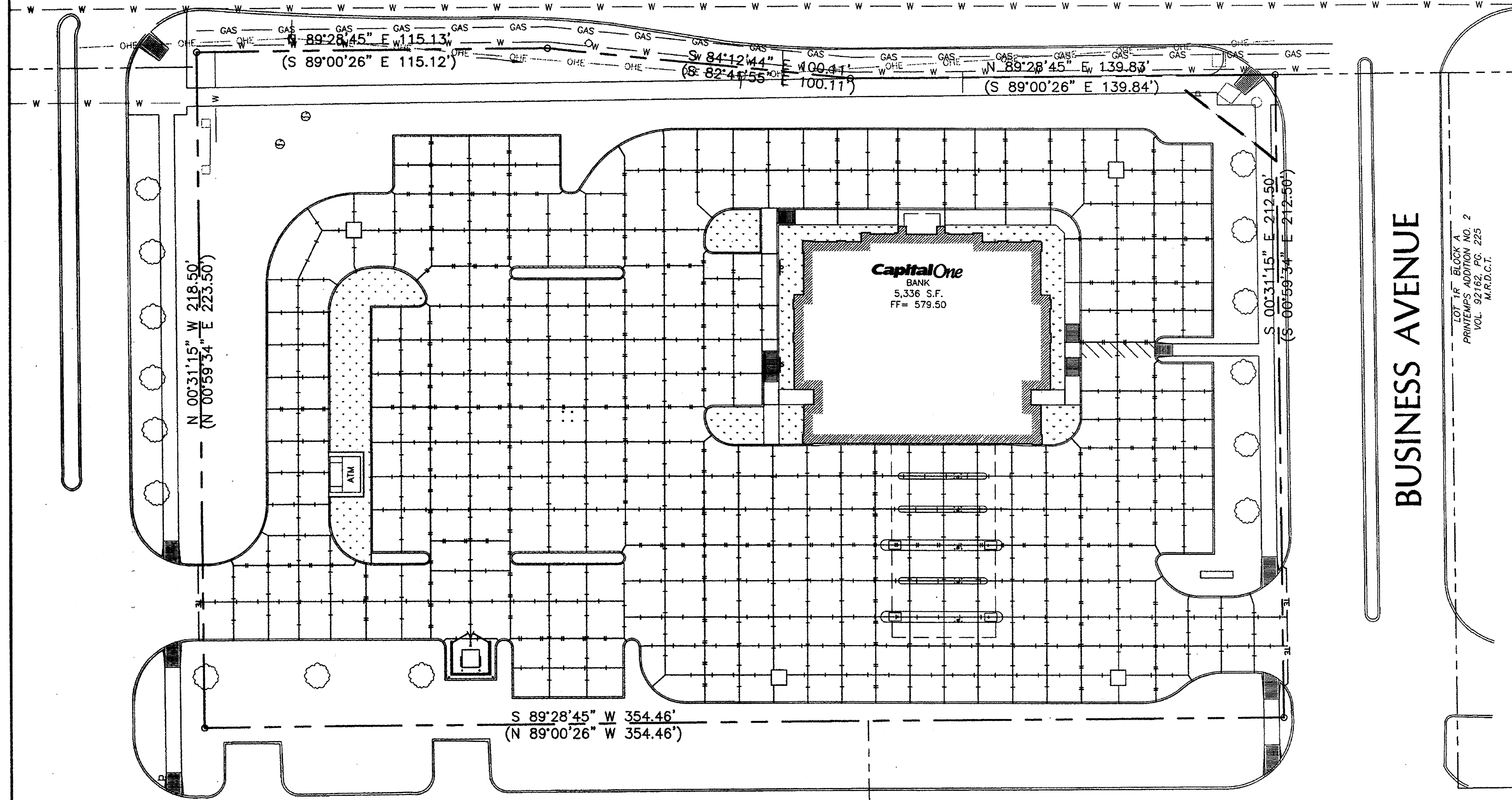


# BELTLINE ROAD



**LEGEND**

|  |  |
|--|--|
|  | PROPERTY LINE                                      |
|  | ADJOINED PROPERTY                                  |
|  | BUILDING SETBACK LINE                              |
|  | EXISTING CURB                                      |
|  | PROPOSED CURB AND GUTTER                           |
|  | PROPOSED RETAINING WALL                            |
|  | PROPOSED CONTROL JOINT (15' MAX.)                  |
|  | PROPOSED EXPANSION JOINT (60' MAX.)                |
|  | PROPOSED EXPANSION JOINT AT EXISTING THICKEND EDGE |
|  | PAINTED STRIPE (TRAFFIC YELLOW)                    |
|  | PAINTED WALKWAY (TRAFFIC YELLOW)                   |
|  | 7" CONCRETE PAVING                                 |
|  | 6" CONCRETE PAVING                                 |
|  | 5" CONCRETE PAVING                                 |
|  | 4" CONCRETE SIDEWALK                               |
|  | LANDSCAPED AREA (RE: LANDSCAPE PLANS)              |

BUSINESS AVENUE

LOT 1A BLOCK A  
PRINTEMPS ADDITION NO. 2  
VOL. 92162, PG. 225  
M.R.D.C.T.

LOT 3B BLOCK D REPLAT OF  
ADDISON TOWN CENTER  
VOL. 94178, PG. 1630  
M.R.D.C.T.

**GENERAL NOTES**

- SEE SHEET C-? FOR PAVEMENT NOTES AND SHEET C-? FOR PAVEMENT DETAILS.
- SEE ARCHITECTURAL SHEETS FOR EXACT DIMENSIONS OF BUILDING, SIDEWALK, PADS, AND DRIVE THRU ISLANDS.
- ALIGN PAVEMENT EXPANSION JOINTS WITH SIDEWALK EXPANSION JOINTS. SEE ARCHITECTURAL PLANS.
- SEE ARCHITECTURAL PLANS FOR SIGHT LIGHTING DESIGN AND DETAILS.

**BENCHMARK**

"X" FOUND CUT IN SIDEWALK LOCATED APPROXIMATELY 85.00' WEST OF THE NORTH WEST PROPERTY LINE.  
ELEV= 573.69

**BUILDING COORDINATES**

|   |   |
|---|---|
| NE CORNER<br>N= 7033542.3509<br>E= 2474034.3335 | SW CORNER<br>N= 7033475.6836<br>E= 2473956.1661 |
| SE CORNER<br>N= 7033475.6838<br>E= 2474034.3328 | NW CORNER<br>N= 7033542.3509<br>E= 2473956.1669 |

THE LOCATION OF EXISTING UNDERGROUND UTILITIES ARE SHOWN IN AN APPROXIMATE WAY ONLY. THE CONTRACTOR TO DETERMINE THE EXACT LOCATION OF ALL EXISTING UTILITIES BEFORE COMMENCING WORK. CONTRACTOR WILL BE FULLY RESPONSIBLE FOR ANY AND ALL DAMAGES WHICH MIGHT OCCUR BY FAILURE TO EXACTLY LOCATE AND PRESERVE ANY AND ALL UNDERGROUND UTILITIES.

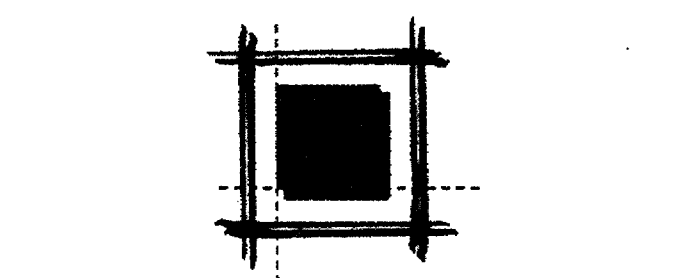
THE SEAL APPEARING IN THIS DOCUMENT WAS AUTHORIZED BY MATHEW THOMAS, P.E. 81576 ON 11/8/2006 FOR RECORD DRAWING PURPOSES ONLY.



**CAPITAL ONE  
ADDISON**  
BELT LINE RD. & MARSH LN.  
ADDISON, TEXAS



Capital One  
Corp. Design & Construction  
201 St. Charles Ave., Suite 220  
New Orleans, LA 70170



**LEVINSON  
ASSOCIATES, L.P.**  
6117 Richmond Ave., Suite 200 Houston, Texas 77057  
tel 713.787.0000 fax 713.850.8250  
ARCHITECTURE PLANNING INTERIOR DESIGN

| REVISIONS            | DATE    | BY  |
|----------------------|---------|-----|
| DRG REVIEW SUBMITTAL | 2/24/06 | RAL |
| CITY REVIEW COMMENTS | 4/12/06 | RAL |
| CITY REVIEW COMMENTS | 5/19/06 | GRM |

**Carter & Burgess**

Consultants in Planning, Engineering, Architecture,  
Construction Management, and Related Services  
**CARTER & BURGESS, INC.**  
BUILDING PROGRAMS DIVISION  
777 MAIN STREET,  
FORT WORTH, TEXAS 76102  
TEL (817) 222-8500  
FAX (817) 222-8550  
COPYRIGHT © 2006 CARTER AND BURGESS

LALP Project Number: 25271.000  
Issued For: AS-BUILT

**JOINT LAYOUT PLAN**

**C-3.1**

Issue Date: NOVEMBER 8, 2006  
C&B Project Number: 293070.020

FILE INFO: \\viberra\TX\_Addison\Capital One\_293070\Civil\Sheets\A-A-Build\3070-C03-1-IP.dwg XREFS:MT-Seal; Interim Stamp: 293070aBOR; 293070aSIT; 293070aSTD; 293070aSTO; 293070aUTL; ADDISON\_AOI; I MODIFIED: Nov 08, 2006 9:24:40m PLOTTED: Nov 08, 2006 9:36:36am BY:mllh1 PLOT SCALE: 1/30