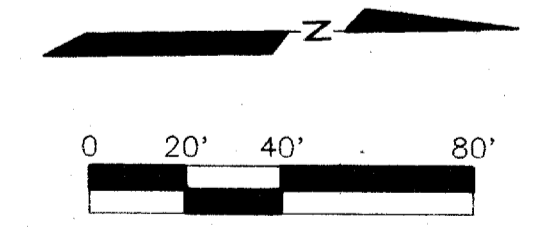
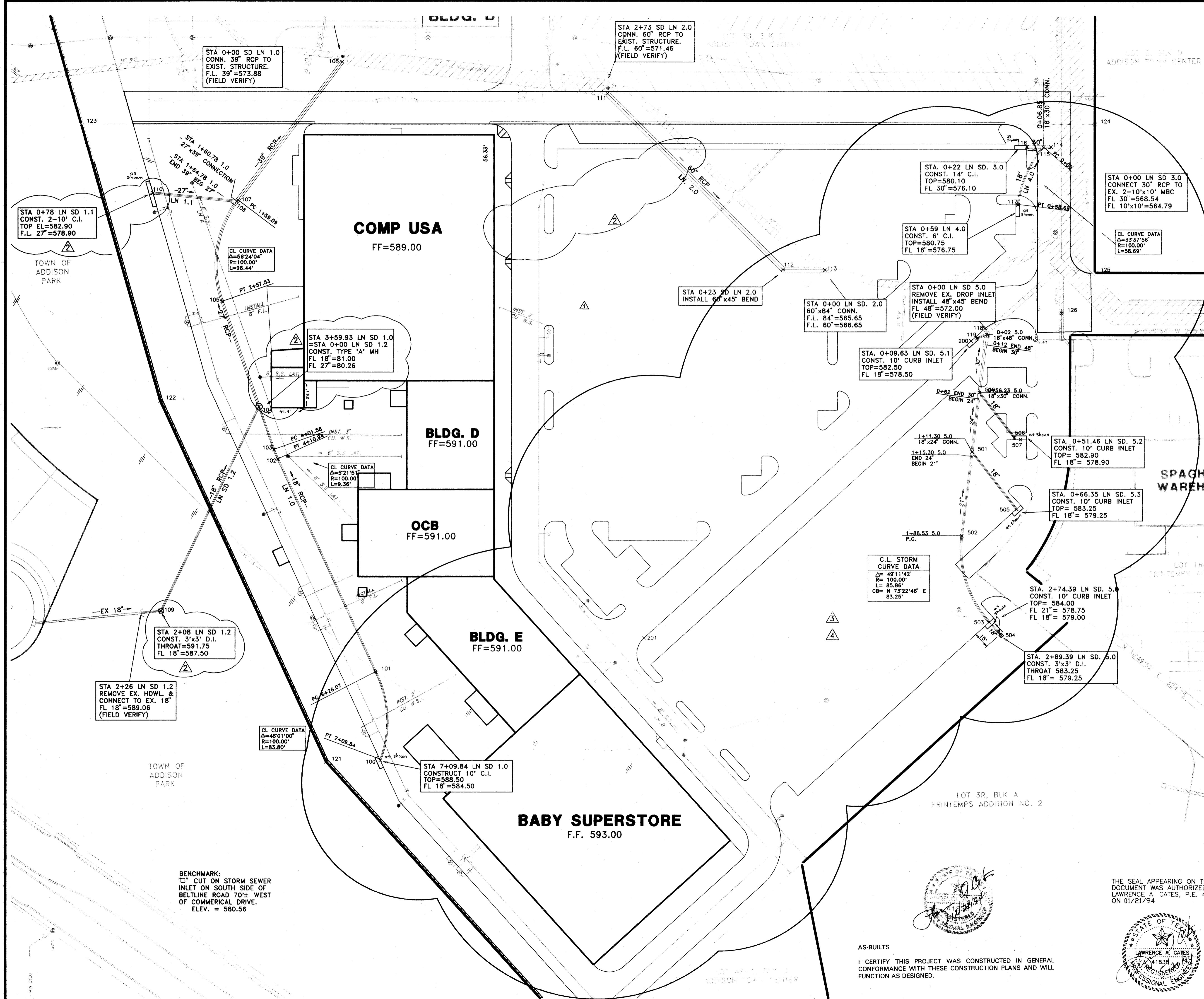


DRAINAGE COORDINATES

PNT No.	NORTHING	EASTING	DESCRIPTION
100	4366.0687948	5400.3456811	PT
101	4363.0564909	5318.9544772	PC
102	4276.4689375	5122.0081438	PT
103	4273.1073569	5113.2742027	PC
104	4259.9825290	5073.7470685	STM. M.H.
105	4227.7136508	4976.5655726	PT
106	4242.8228387	4884.7811849	27x39 CONN.
107	4243.8524586	4883.4417104	PC
108	4341.8682716	4758.1340749	0+00 LN 1.0
109	4166.6607530	5259.8517001	3'x3' D.I.
110	4165.7294536	4875.8952958	2-10' C.I.
111	4585.4751419	4791.4148702	2+73 LN 2.0
112	4744.2553698	4855.7951383	60x45' BEND
113	4782.8376473	4958.4637296	0+00 LN 2.0
114	4992.6828566	4847.2619963	0+00 LN 3.0
115	4985.8292030	4847.1292386	0+00 LN 4.0
116	4970.4342920	4846.8310335	14' C.I. (LN 3.0)
117	4961.4813332	4899.8948656	6' C.I. (LN 4.0)
118	4930.6915804	5018.5467943	C.L. EX. D.I.
119	4921.7143483	5022.0354277	8' C.I. (LN 5.0)
121	4316.1029436	5400.9907324	BNDRY PNT
122	4169.1457350	5066.7315662	BNDRY PNT
123	4100.7506474	4810.9685289	BNDRY PNT
124	5033.5014349	4827.1316919	BNDRY PNT
125	5031.1376734	4963.5397862	BNDRY PNT
126	4999.9989234	5000.0007670	BNDRY PNT
200	4916.4240891	5024.3431665	C.L. INLET
201	4610.6089602	5292.2349205	CURB RETURN
500	4923.2089298	5071.9445965	RCP
501	4915.5664712	5126.4828233	RCP
502	4904.8489465	5202.9653831	RCP
503	4928.6606881	5282.7355572	C.L. INLET
504	4939.5329890	5295.1469662	C.L. INLET
506	4964.2064660	5179.4594151	C.L. INLET
507	4954.7706177	5113.7933061	RCP
507	4960.2394715	5115.6383352	C.L. INLET



As Built - Dec 14, 1994

5/12/94	ADDED BABY STORE
5/02/94	ADDED DRAINAGE COORDINATES
2/07/94	REMOVE ROOF DRAIN SYSTEM, DEL 21" & 24", ADD 18" & 27"
1/28/94	REV. THRT ELEV. OF DROP INLET, ADD TYPE 'A' MH, UP SIZE 12" CI TO 20" CI
1/28/94	ADD 18" RCP TO DRAIN TO CANOPY
1/28/94	ADD 18" RCP TO

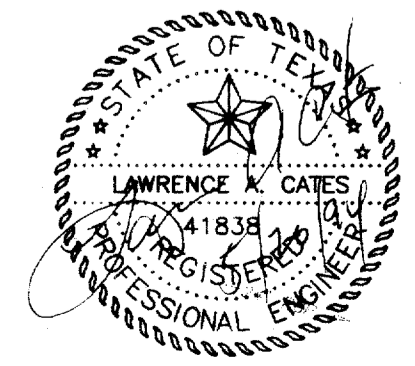
DRAINAGE PLAN

COMP USA
ADDISON TOWN CENTER
TOWN OF ADDISON, TEXAS

LAWRENCE A. CATES & ASSOC. CONSULTING ENGINEERS
DALLAS, TEXAS

DESIGN	DRAWN	DATE	SCALE	NOTES	FILE	NO.
LAC	LAC		1"=40'	D.P.	94044 B-DRNPLN.DWG	C-7

THE SEAL APPEARING ON THIS DOCUMENT WAS AUTHORIZED BY LAWRENCE A. CATES, P.E. 41838 ON 01/21/94



AS-BUILTS
 I CERTIFY THIS PROJECT WAS CONSTRUCTED IN GENERAL CONFORMANCE WITH THESE CONSTRUCTION PLANS AND WILL FUNCTION AS DESIGNED.