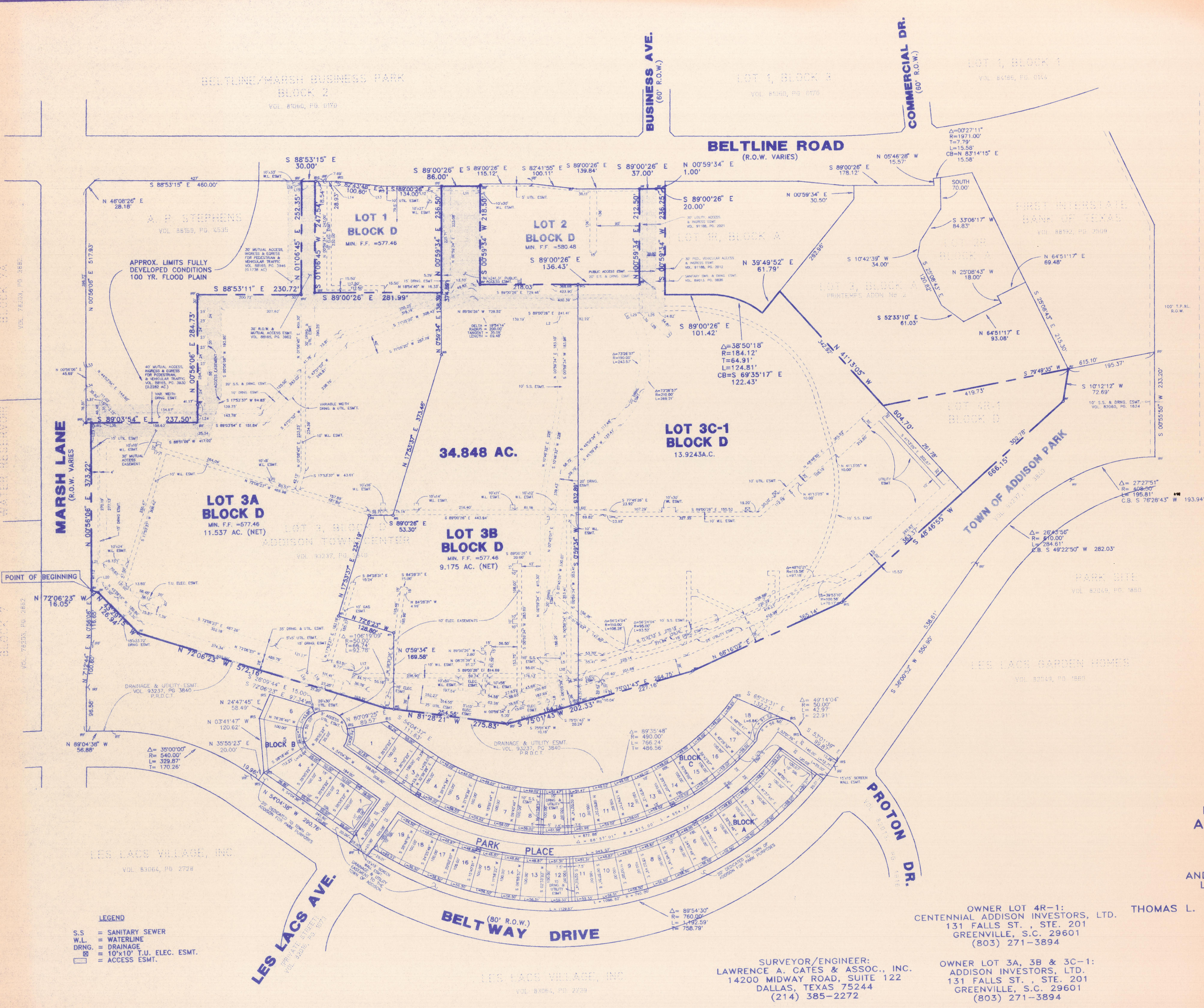


VICINITY MAP
N.T.S.

LINE TABLE

L1	N 04°43'48" W	36.58'
L2	S 89°00'26" E	10.00'
L3	S 00°59'34" W	346.57'
L4	S 89°00'26" E	130.96'
L5	N 89°00'26" W	130.96'
L6	S 00°59'34" W	69.91'
L7	S 04°43'48" E	36.58'
L8	N 05°03'59" W	191.81'
L9	N 17°53'37" E	10.45'
L10	N 89°00'26" W	10.00'
L11	N 89°00'26" W	108.00'
L12	N 89°00'26" W	142.58'
L13	N 82°43'48" W	100.80'
L14	N 89°00'26" W	28.00'
L15	N 85°03'15" W	48.88'
L16	N 01°06'45" E	10.00'
L17	S 17°53'37" W	25.00'
L18	S 27°04'06" E	53.70'
L19	N 27°04'06" W	53.70'
L20	N 88°52'54" W	26.10'
L21	S 89°03'54" W	27.73'
L22	S 85°27'35" W	20.51'
L23	N 00°56'06" E	44.29'
L24	N 00°56'06" E	18.00'
L25	N 04°32'25" W	4.58'
L26	S 89°00'26" E	20.04'
L27	S 49°26'50" W	15.00'
L28	N 40°33'10" W	68.10'
L29	S 89°00'26" E	22.75'
L30	S 27°27'23" E	1.46'
L31	N 45°59'34" E	37.49'
L32	N 27°27'23" E	11.52'
L33	S 80°56'06" E	11.76'
L34	S 80°56'06" W	11.52'
L35	S 00°56'06" W	40.27'
L36	S 89°03'54" E	15.00'

THE LINE HEREON LABELED "APPROX. LIMITS FULLY DEVELOPED CONDITIONS 100 YEAR FLOOD PLAIN" IS BASED ON HYDRAULIC MODELING PERFORMED BY O'BRIEN ENGINEERING, ASSUMING A CONDITION OF ULTIMATE DEVELOPMENT THROUGHOUT THE WATERSHED. THE HYDROLOGIC AND HYDRAULIC MODELS ARE ON FILE WITH THE TOWN OF ADDISON. (PER ORIGINAL PLAT, VOL. 93237, PG. 3840)



- LEGEND**
- S.S. = SANITARY SEWER
 - W.L. = WATERLINE
 - DRNG. = DRAINAGE
 - 10'x10' T.U. ELEC. ESMT. = 10'x10' T.U. ELEC. ESMT.
 - ACCESS ESMT. = ACCESS ESMT.

OWNER LOT 4R-1:
CENTENNIAL ADDISON INVESTORS, LTD.
131 FALLS ST., STE. 201
GREENVILLE, S.C. 29601
(803) 271-3894

OWNER LOT 3A, 3B & 3C-1:
ADDISON INVESTORS, LTD.
131 FALLS ST., STE. 201
GREENVILLE, S.C. 29601
(803) 271-3894

SURVEYOR/ENGINEER:
LAWRENCE A. CATES & ASSOC., INC.
14200 MIDWAY ROAD, SUITE 122
DALLAS, TEXAS 75244
(214) 385-2272

REPLAT
LOTS 3A, 3B, 3C-1 & 4R-1
ADDISON TOWN CENTER

A REPLAT OF
LOTS 3 & 4, BLOCK D
ADDISON TOWN CENTER
AND A PART OF THE REMAINDER OF
LES LACS PLAZA SUBDIVISION
BEING IN THE
TOWN OF ADDISON
DALLAS COUNTY, TEXAS

THOMAS L. CHENOWITH SURVEY, ABSTRACT NO. 273

JAN. 24, 1994

