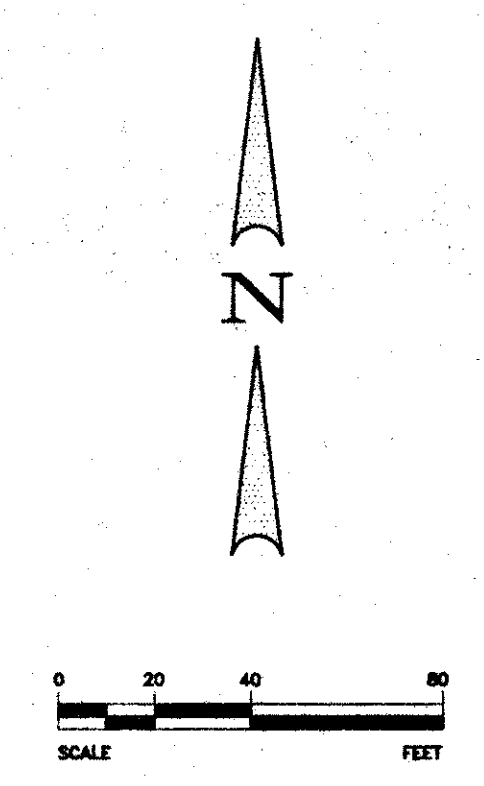
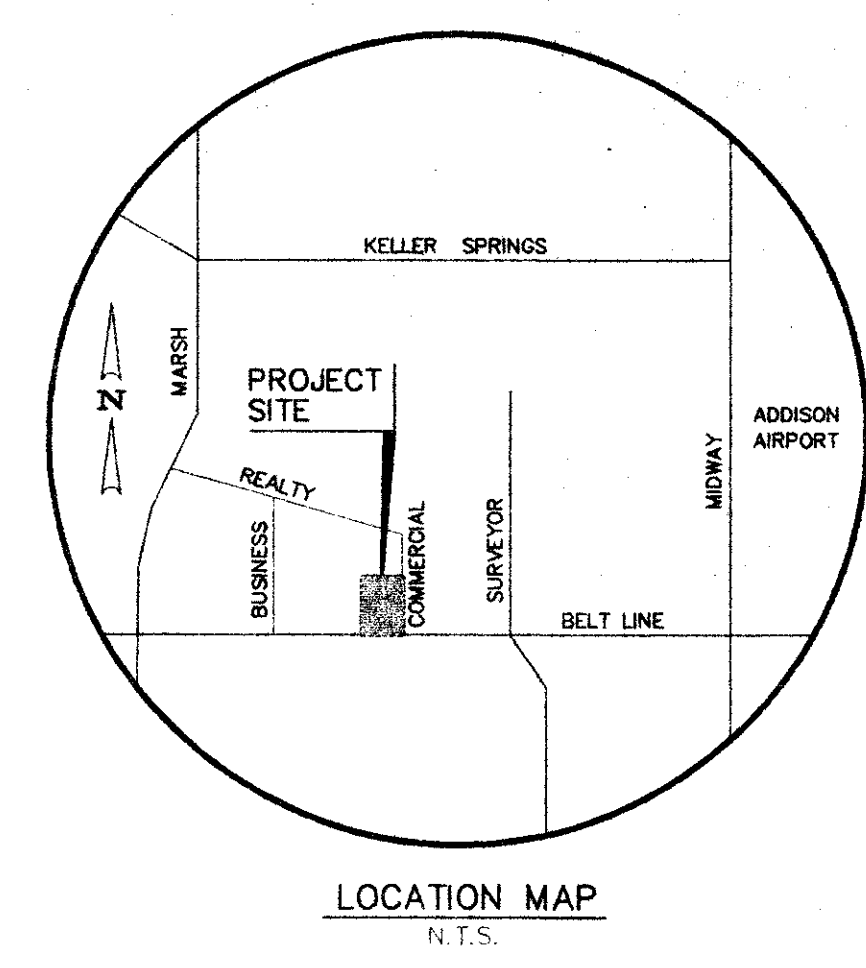
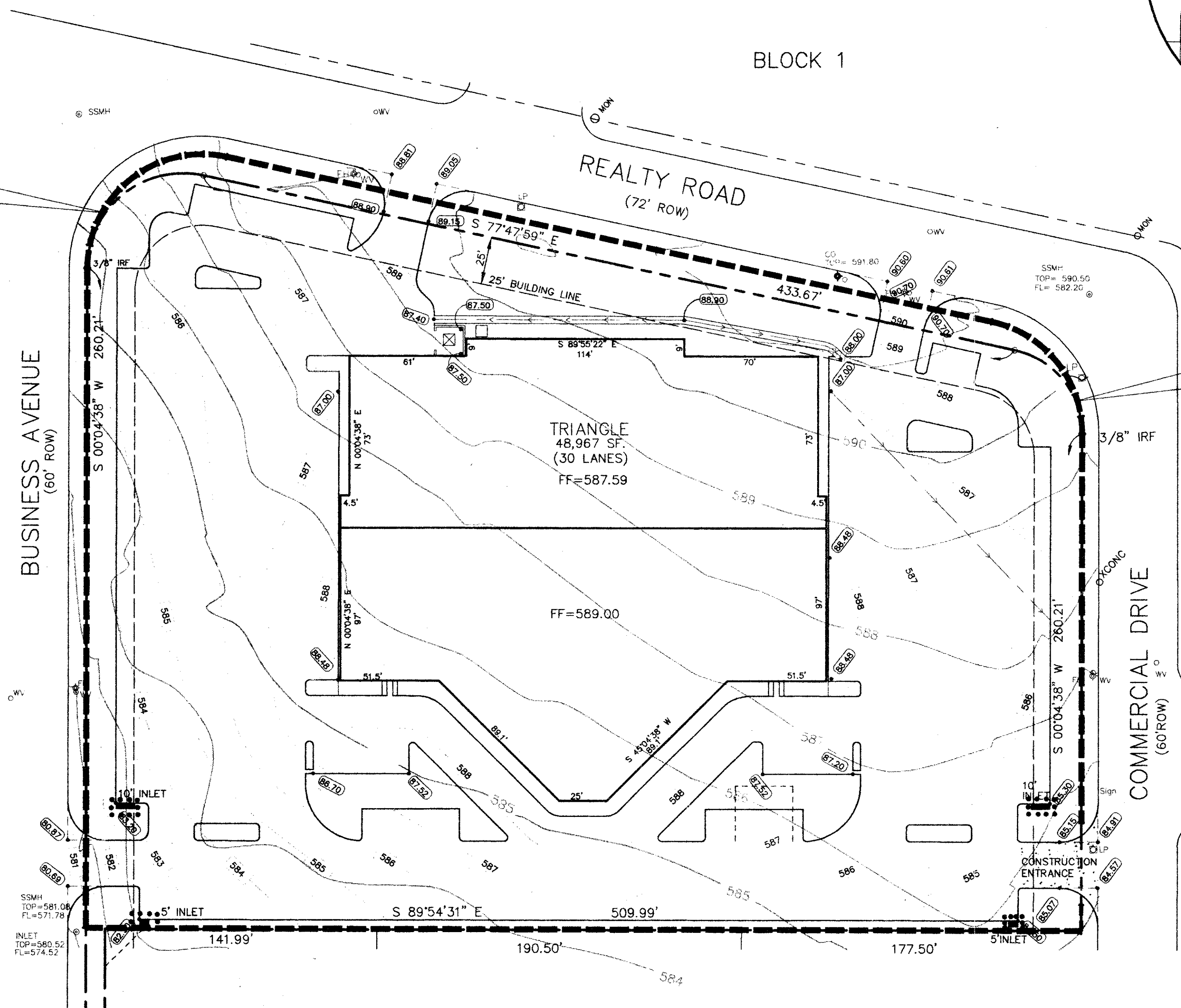


DELTA = 102°07'23"
 RADIUS = 50.08'
 TANGENT = 61.98'
 LENGTH = 89.27'
 CHORD = 77.91'
 CHD BRG = N 51°08'20" E

BELT LINE/MARSH BUSINESS PARK
 BLOCK 2
 VOL. 79252, PG. 0215



BID SET
NOT FOR CONSTRUCTION

Winkelmann & Associates, Inc.
 CONSULTING CIVIL ENGINEERS • SURVEYORS
 1700 WILHELM ROAD, SUITE 200
 IRVING, TEXAS 75038
 (972) 499-7000
 (972) 499-7001 FAX

No.	DATE	REVISION	APPROV.

STORM DRAIN INLET PROTECTION CONSTRUCTION SPECIFICATIONS

1. WOODEN FRAME IS TO BE CONSTRUCTED OF 2" X 4" CONSTRUCTION GRADE LUMBER.
2. WIRE MESH MUST BE OF SUFFICIENT STRENGTH TO SUPPORT FILTER FABRIC, AND STONE FOR CURB INLET WITH WATER FULLY IMPROVED AGAINST IT.
3. FILTER CLOTH MUST BE OF A TYPE APPROVED FOR THIS PURPOSE, RESISTANT TO SUBLIMATION WITH SIZE 10-12, 40-60, TO ALLOW SUFFICIENT PASSAGE OF WATER AND REMOVAL OF SEDIMENT.
4. STONE IS TO BE 2" IN SIZE AND CLEAN SINCE FINES WOULD CLOG THE CLOTH.
5. THE ASSEMBLY SHALL BE PLACED SO THAT THE END SPACERS ARE A MINIMUM 1" BEYOND BOTH ENDS OF THE TARGET SPACING.
6. FROM THE WIRE MESH AND FILTER CLOTH TO THE CONCRETE CURB AND AGAINST THE FACE OF CURB ON BOTH SIDES OF THE INLET, PLACE CLEAN 2" STONE OVER THE WIRE MESH AND FILTER FABRIC IN SUCH A MANNER AS TO PREVENT WATER FROM ENTERING THE INLET UNDER OR AROUND THE FILTER CLOTH.
7. THIS TYPE OF PROTECTION MUST BE INSPECTED FREQUENTLY AND THE FILTER CLOTH AND STONE REPLACED WHEN CLOGGED WITH SEDIMENT.
8. ASSURE THAT STORM FLOW DOES NOT BYPASS INLET BY INSTALLING TEMPORARY EARTH OR ASPHALT BANKS DIRECTING FLOW INTO INLET.

- A SWALE, DITCHLINE OR YARD INLET PROTECTION**
1. EXCAVATE COMPLETELY AROUND INLET TO A DEPTH OF 18" BELOW NOTCH ELEVATION.
 2. DRIVE 2 X 4 POST 1' INTO GROUND AT FOUR CORNERS OF INLET. PLACE MAIL STRIPS BETWEEN POSTS ON ENDS OF INLET. ASSEMBLE TOP PORTION OF 2 X 4 FRAME USING OVERLAP JOINT METHOD. TOP OF FRAME (WEIR) MUST BE 6" BELOW EDGE OF ROADWAY ADJACENT TO INLET.
 3. STRETCH WIRE MESH TIGHTLY AROUND FRAME AND FASTEN SECURELY. ENDS MUST MEET AT POST.
 4. STRETCH FILTER CLOTH TIGHTLY OVER WIRE MESH. THE CLOTH MUST EXTEND FROM TOP OF FRAME TO 18" BELOW INLET NOTCH ELEVATION. FASTEN SECURELY TO FRAME. ENDS MUST MEET AT POST, BE ENVELOPPED AND TUCKED UNDER FASTENED BOARD.
 5. BACKFILL AROUND INLET IN COMPACTED 6" LAYERS UNTIL LAYER OF CLOTH IS EVEN WITH NOTCH ELEVATION ON ENDS AND TOP ELEVATION ON SIDES.
 6. IF THE INLET IS NOT IN A LOW POINT, CONSTRUCT A COMPACTED EARTH DIKE ON THE DITCHLINE BELOW THE TOP OF THE DIKE IS TO BE AT LEAST 6" HIGHER THAN THE TOP OF FRAME (WEIR).
 7. THIS STRUCTURE MUST BE INSPECTED FREQUENTLY AND THE FILTER FABRIC REPLACED WHEN CLOGGED.

- CURB INLET PROTECTION**
1. ATTACH A CONTINUOUS PIECE OF WIRE MESH (30" MIN. WIDTH BY THICK LENGTH PLUS 4" TO THE 2" X 4" WIRE OVERHANGING THROAT LENGTH PLUS 2" AS SHOWN ON THE STANDARD DRAWING).
 2. PLACE A PIECE OF APPROVED FILTER CLOTH (48-60 SEVES OF THE SAME DIMENSIONS AS THE WIRE MESH OVER THE WIRE MESH AND SECURELY ATTACH TO THE 2" X 4" WIRE TO 18" LONG VERTICAL SPACERS TO BE LOCATED BETWEEN THE WEIR AND DALET FACE (MAX. 4" APART).
 3. PLACE THE ASSEMBLY AGAINST THE INLET THROAT AND WALL (MINIMUM 2" LENGTHS OF 2" X 4" TO THE TOP OF THE WEIR AT SPACER LOCATIONS. THESE 2" X 4" ANCHORS SHALL EXTEND ABOVE THE INLET TOP AND BE HELD IN PLACE BY SANDBAGS OR ALTERNATE WEIGHT.

STRAW BALE DIKE CONSTRUCTION SPECIFICATIONS

1. BALES SHALL BE PLACED AT THE TOE OF A SLOPE OR ON THE CONTOUR AND IN A ROW WITH ENDS TIGHTLY ADJUTING THE ADJACENT BALES.
2. EACH BALE SHALL BE CHECKED IN THE SOIL A MINIMUM OF 40 INCHES AND PLACED SO THE BRIDGES ARE HORIZONTAL.
3. BALES SHALL BE SECURELY ANCHORED IN PLACE BY EITHER TWO STAKES OR RE-BARS DRIVEN THROUGH THE BALES. THE FIRST STAKE IN EACH BALE SHALL BE DRIVEN TOWARD THE PREVIOUSLY LAID BALE AT AN ANGLE TO FORCE THE BALES TOGETHER. STAKES SHALL BE DRIVEN FLUSH WITH THE BALE.
4. INSPECTION SHALL BE FREQUENT AND REPAIR REPLACEMENT SHALL BE MADE PROMPTLY AS NEEDED.
5. BALES SHALL BE REMOVED WHEN THEY HAVE SERVED THEIR USEFULNESS SO AS NOT TO BLOCK OR IMPERE STORM FLOW OR DRAINAGE.

STABILIZED CONSTRUCTION ENTRANCE CONSTRUCTION SPECIFICATIONS

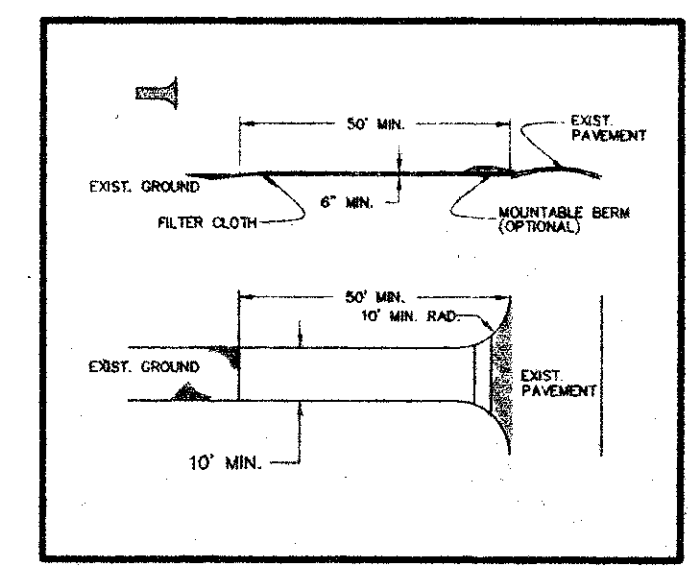
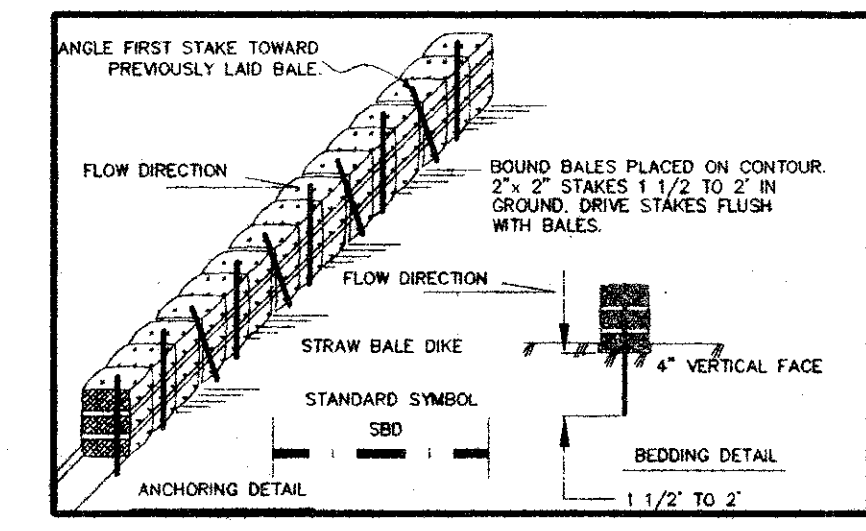
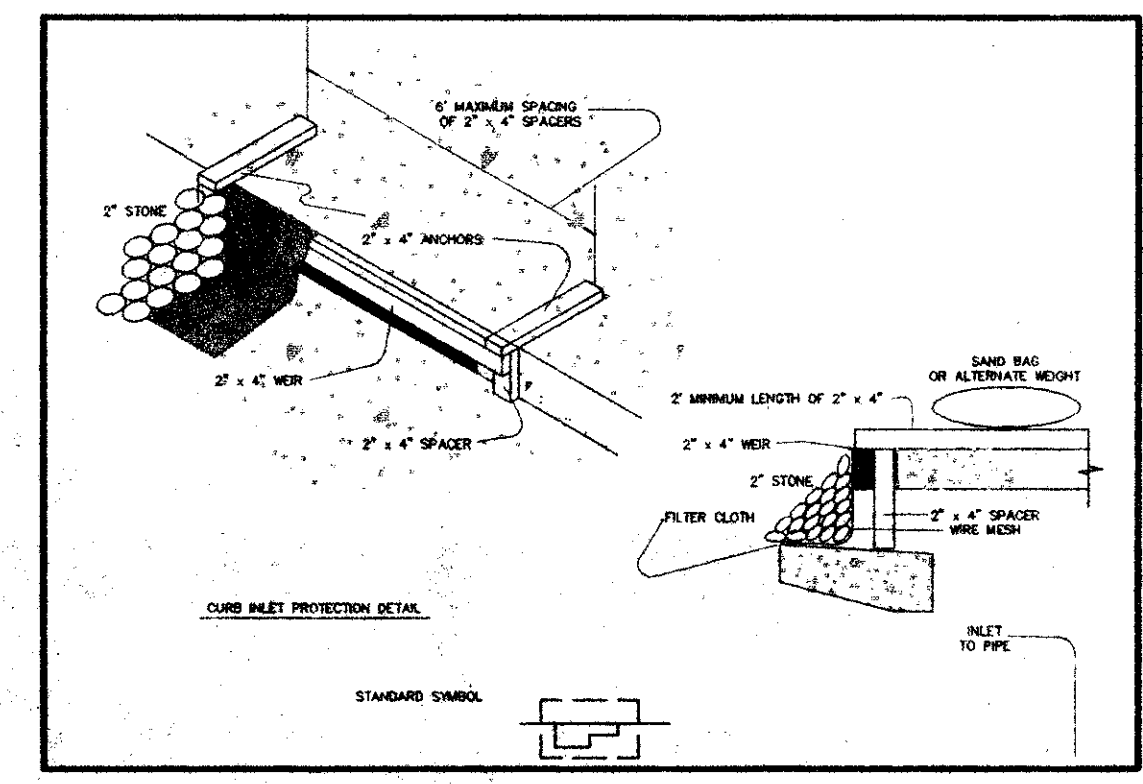
1. STONE SIZE - USE 2" STONE OR RECLAIMED OR RECYCLED CONCRETE EQUIVALENT.
2. LENGTH - AS REQUIRED BUT NOT LESS THAN 50 FEET EXCEPT ON A SINGLE RESIDENCE - MINIMUM WIDTHS A 20 FOOT MINIMUM LENGTH SHALL APPLY.
3. THICKNESS - NOT LESS THAN SIX (6) INCHES.
4. WIDTH - TEN (10) FOOT MINIMUM, BUT NOT LESS THAN THE FULL WIDTH AT POINTS WHERE INCREASES OR DECREASES OCCUR.
5. FILTER CLOTH - WILL BE PLACED OVER THE ENTIRE AREA PRIOR TO PLACING OF STONE. FILTER WILL NOT BE REQUIRED ON A SINGLE FAMILY RESIDENCE LOT.
6. SURFACE WATER - ALL SURFACE WATER FLOWING OR DIVERTED TOWARD CONSTRUCTION ENTRANCES SHALL BE PERMITTED TO ENTER THE ENTRANCE IF PAVING IS IMPRACTICAL. A REMEDIABLE BERM WITH 2% SLOPE WILL BE PROVIDED.
7. MAINTENANCE - THE ENTRANCE SHALL BE MAINTAINED IN A CONDITION WHICH WILL PREVENT TRACKING OF FLOWING OR DIVERTED WATER TO ADJACENT AREAS. ANY REPAIRS OR PERIODIC TOPPING UP WITH ADDITIONAL STONE AS CONDITIONS DEMAND REPAIR - AND/OR CLEANING OF ANY REBAR USE TO BE PERFORMED IMMEDIATELY AFTER PERIODIC INSPECTION OR TRACKED INTO PUBLIC RIGHTS-OF-WAY SHALL BE PERFORMED IMMEDIATELY.
8. VANDALISM - WHEELS SHALL BE CLEANED TO REMOVE SEDIMENT PRIOR TO ENTRANCE INTO PUBLIC RIGHTS-OF-WAY. VANDALISM IS PROHIBITED. IT SHALL BE DONE ON AN AREA STABILIZED WITH STONE AND WHICH DRAINS INTO AN APPROVED SEDIMENT TRAPPING.
9. PERIODIC INSPECTION -

CONSTRUCTION SET

ISSUED BY
 TOWN OF ADDISON
 PUBLIC WORKS DEPARTMENT

NAME: _____ DATE: _____
 BENCH MARK:
 10" cut top of curb at the curb return east side of
 Commercial Drive and Beltline Road.
 Elev = 582.16

* MIN. FINISH FLOOR ELEVATION ARE FROM
 REPORT PREPARED BY O'BRIEN ENGINEERS
 DATED: 7/7/94



LEGEND

- EX. CONTOURS
- PROP. CONTOURS
- LOT LINE
- RIPRAP
- STRIPING
- STRAW BALE DIKE OR SILT FENCE
- STABILIZED CONSTRUCTION ENTRANCE
- STONE OUTLET SEDIMENT TRAP
- INLET PROTECTION
- TEMPORARY SEEDING
- PERMANENT SEEDING

TL CHENOWETH SURVEY, ABSTRACT NO. 273
 DMEYERS SURVEY, ABSTRACT NO. 923
 CITY OF ADDISON, DALLAS COUNTY, TEXAS

OWNER:
 TRIANGLE BOWL
 1717 N. BELTLINE ROAD
 IRVING, TX 75061

EROSION PROTECTION PLAN
BLOCK 3, BELTLINE MARSH BUSINESS PARK
ADDISON, TEXAS

Scale: 1"=40' Date: 12/23/94
 Designed By: TL
 Drawn By: TL
 Checked By: MC
 File: 04826RD.DWG
 Project No.: 0482.01

SHEET
 C-5
 OF