

**BID SET
NOT FOR CONSTRUCTION**

Winkelmann & Associates, Inc.
CONSULTING CIVIL ENGINEERS & SURVEYORS
12800 WALCOTT ROAD, SUITE 200
DALLAS, TEXAS 75240
(214) 495-7000 FAX

T.L. CHENOWETH SURVEY, ABSTRACT NO. 273
D.MEYERS SURVEY, ABSTRACT NO. 923
CITY OF ADDISON, DALLAS COUNTY, TEXAS

OWNER:
TRIANGLE BOWL
1717 N. BELTLINE ROAD
IRVING, TX 75061

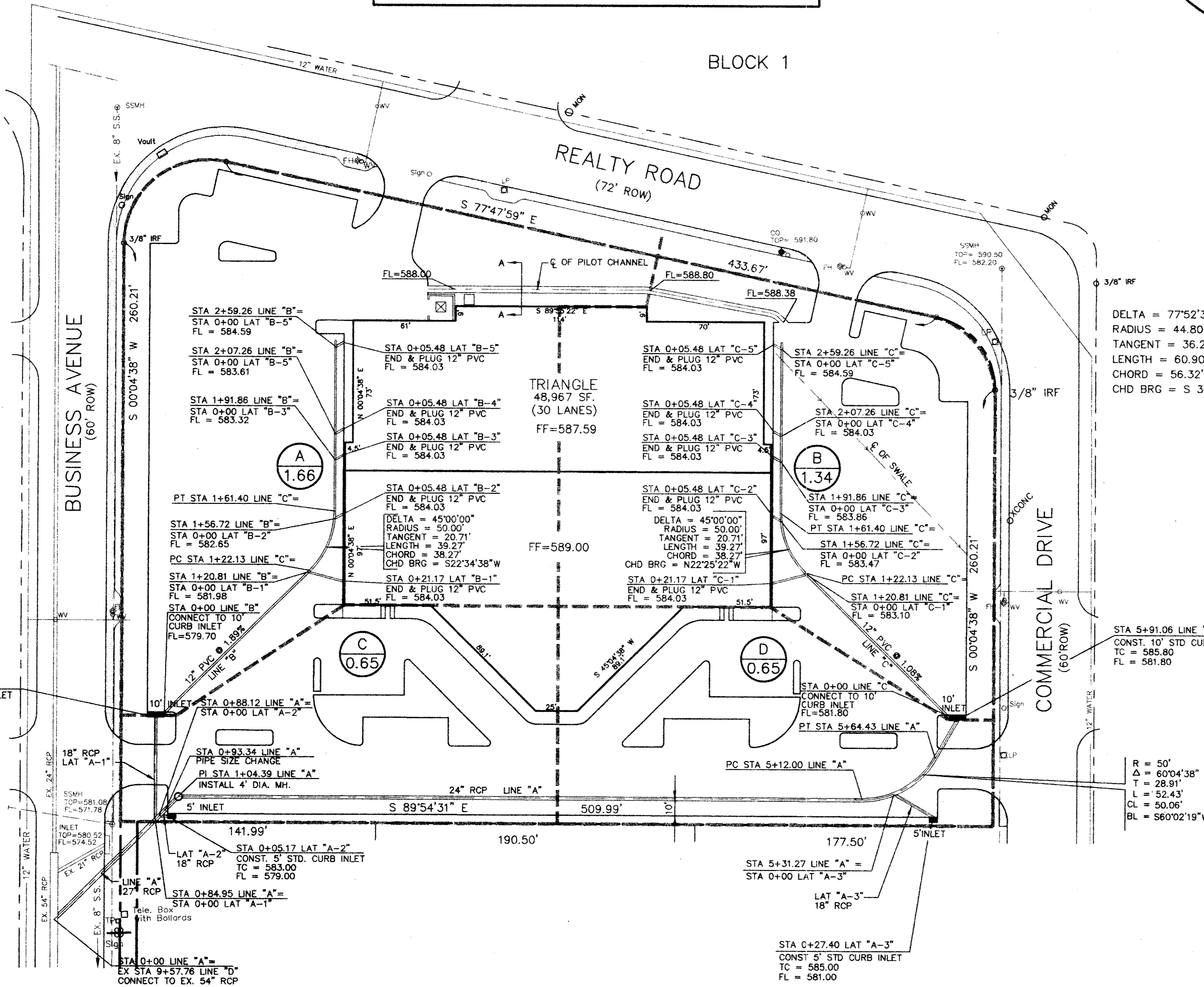
**DRAINAGE PLAN
BLOCK 3, BELTLINE MARSH BUSINESS PARK
ADDISON, TEXAS**

Scale: 1"=40'
Date: 2/10/94
Designed By: TL
Drawn By: TL
Checked By: MC
File: 048IDRN.DWG
Project No.: 0482.01

SHEET
C-6
OF
9

BELT LINE/MARSH BUSINESS PARK
BLOCK 2
VOL. 79252, PG. 0215

DELTA = 102°07'23"
RADIUS = 50.08'
TANGENT = 61.98'
LENGTH = 89.27'
CHORD = 77.91'
CHD BRG = N 51°08'20" E



DELTA = 77°52'37"
RADIUS = 44.80'
TANGENT = 36.20'
LENGTH = 60.90'
CHORD = 56.32'
CHD BRG = S 38°51'40" E

DRAINAGE AREA TABLE				
AREA ID.	AREA (AC.)	C	I ₁₀₀	Q ₁₀₀
A	1.66	0.9	8.88	13.3
B	1.34	0.9	8.88	10.5
C	0.65	0.9	8.88	5.2
D	0.65	0.9	8.88	5.2

LEGEND

- (A) DRAINAGE AREA ID.
- (A) DRAINAGE AREA IN ACRES
- DRAINAGE AREA DIVIDES

R = 50'
Δ = 60°04'38"
T = 28.91'
L = 52.43'
CL = 50.06'
BL = S60°02'19"W

**CONSTRUCTION SET
ISSUED BY
TOWN OF ADDISON
PUBLIC WORKS DEPARTMENT**

BENCH MARK:
"I" cut top of curb at the curb return east side of
Commercial Drive and Beltline Road.
Elev = 582.16

* MIN. FINISH FLOOR ELEVATION ARE FROM
REPORT PREPARED BY O'BRIEN ENGINEERS
DATED: 7/7/94