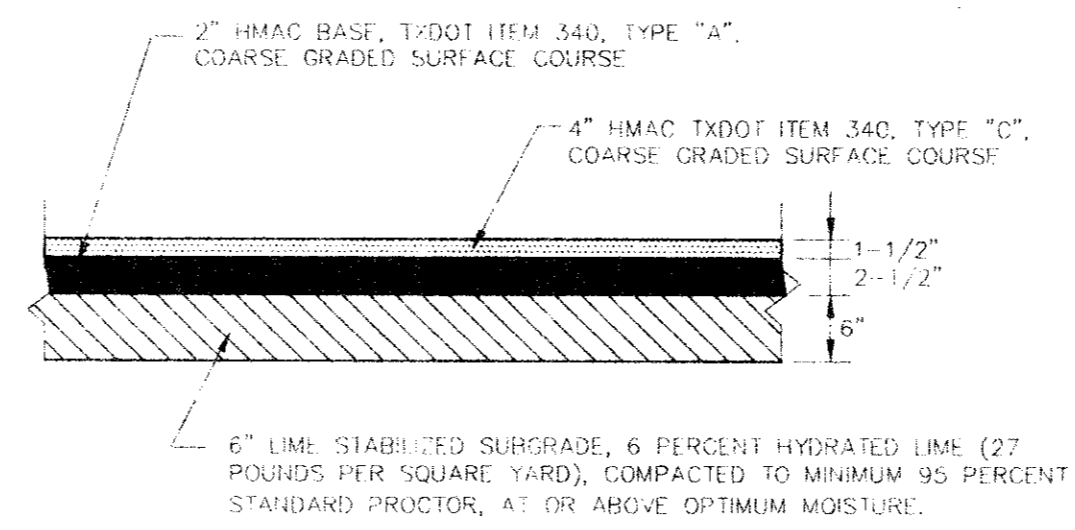
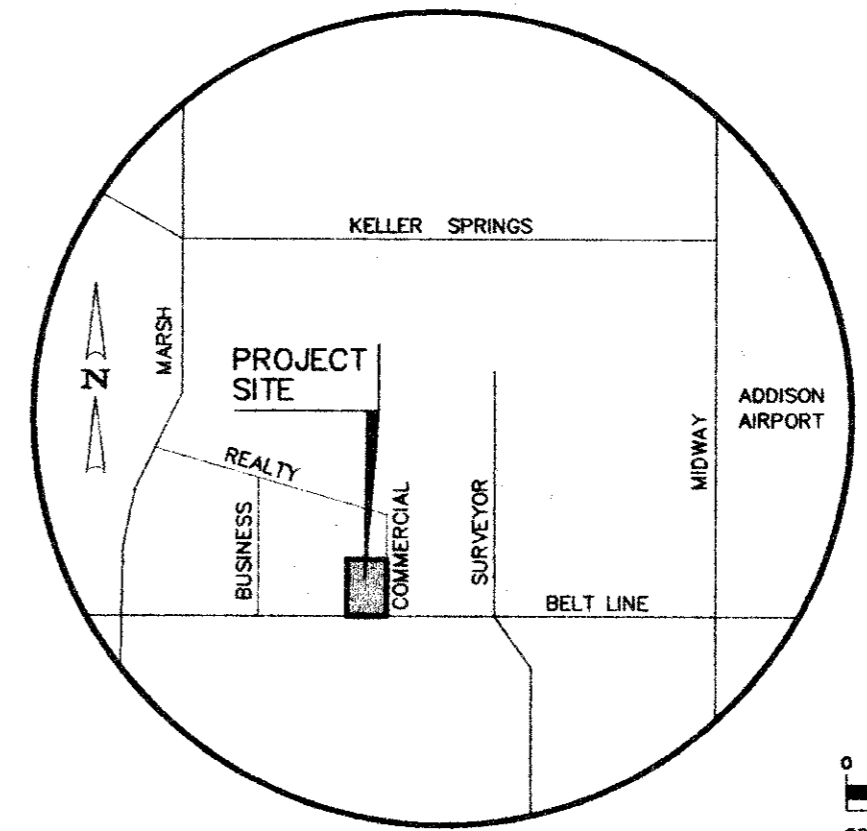


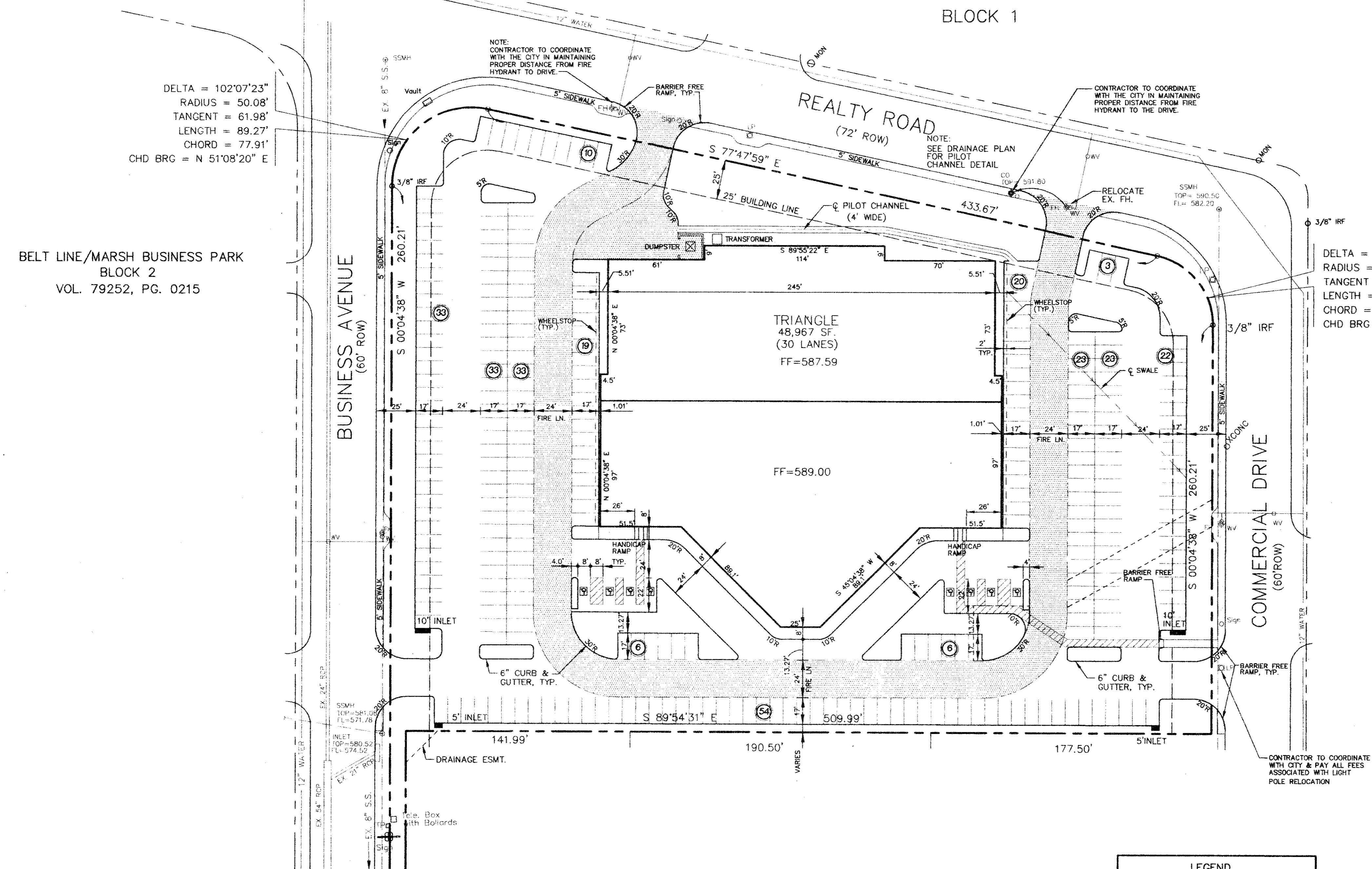
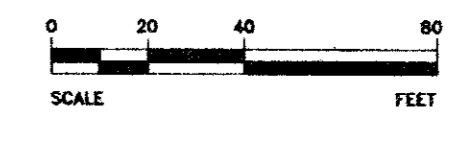
LIGHT DUTY PAVEMENT SECTION
N.T.S.



HEAVY DUTY PAVEMENT SECTION
N.T.S.



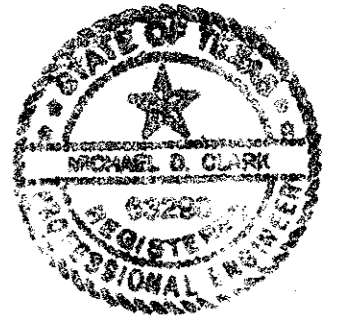
LOCATION MAP
N.T.S.



AS-BUILT DRAWINGS

TO THE BEST OF MY KNOWLEDGE THIS PROJECT WAS CONSTRUCTED IN SUBSTANTIAL ACCORDANCE WITH THE TOWN OF ADDISON STANDARDS AND SPECIFICATIONS, AND FUNCTIONS AS DESIGNED. WINKELMANN & ASSOCIATES, INC. DOES NOT CERTIFY AS TO THE QUALITY OR CORRECTNESS OF CONSTRUCTION, AS NO FIELD INSPECTION WAS PERFORMED.

Michael J. Winkelman
WINKELMANN & ASSOCIATES, INC. 11-29-98 DATE



GENERAL NOTES

- ALL CONSTRUCTION SHALL BE IN ACCORDANCE WITH THE TOWN OF ADDISON SPECIFICATIONS, AND DETAILS.
- ALL SIGNS, PAVEMENT MARKINGS, AND OTHER TRAFFIC CONTROL DEVICES SHALL CONFORM TO THE "TEXAS MANUAL ON UNIFORM TRAFFIC CONTROL DEVICES".
- CONTRACTOR SHALL FIELD VERIFY HORIZONTAL AND VERTICAL LOCATION OF ALL EXISTING UTILITIES BEFORE CONSTRUCTION. CONTRACTOR IS RESPONSIBLE FOR PROTECTING EXISTING UTILITIES (SHOWN OR NOT SHOWN) WITHIN SCOPE OF CONSTRUCTION. IF ANY EXISTING UTILITIES ARE DAMAGED, THE CONTRACTOR SHALL REPLACE THEM AT HIS OWN EXPENSE.
- CONTRACTOR SHALL FURNISH ALL PAVEMENT MARKINGS FOR FIRE LANES, PARKING STALLS, HANDICAPPED PARKING SYMBOLS, AND MISC. STRIPING WITHIN PARKING LOT AND AROUND BUILDING AS SHOWN ON THE PLANS.
- ALL DIMENSIONS SHOWN ARE TO FACE OF CURB UNLESS INDICATED OTHERWISE.
- ALL JOINTS SHALL EXTEND THROUGH THE CURB.
- MINIMUM LENGTH OF OFFSET JOINTS AT RADIUS POINTS IS 1.5 FEET.
- ALL JOINTS, INCLUDING EXPANSION JOINTS WITH REMOVABLE TACK STRIPS, SHALL BE SEALED WITH JOINT SEALANT.
- TRANSVERSE JOINTS MAY BE SKEWED OR ADJUSTED BY SHIFTING TO MEET MANHOLES, INLETS, OTHER STRUCTURES, ETC.
- ALL REINFORCING STEEL SHALL BE NEW DOMESTIC BILLET STEEL CONFORMING TO ASTM A-615, GRADE 60, AND SHALL BE SUPPORTED BY BAR CHAIRS.
- MANHOLES, WATER VALVES, AND CLEANOUTS MAY BE BOXED OUT OR ISOLATED USING EXPANSION JOINT FILLER. MINIMUM LENGTH OF EACH SIDE OF BOX OUT SHALL BE 18 INCHES.
- SEE ARCHITECTURAL PLANS FOR PAVEMENT WITHIN GARDEN AREA, MISCELLANEOUS REINFORCED CONCRETE SIDEWALK ADJACENT TO BUILDING, & TRUCK DOCK RETAINING WALLS.
- CONTRACTOR TO SOO ALL DISTURBED AREAS.
- CONTRACTOR TO REMOVE/RELOCATE & ADJUST SPRINKLER HEADS, CONTROL VALVES, ETC. AS NECESSARY.

LEGEND

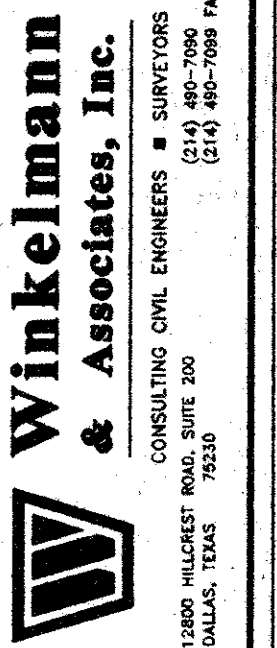
	PROPOSED HEAVY DUTY CONCRETE PAVEMENT
	PROPOSED LIGHT DUTY CONCRETE PAVEMENT
	PARKING SPACE COUNT
	SYMBOL FOR HANDICAPPED PARKING SPACE (SEE DETAIL ON SHEET C-XX)

BENCH MARK:
"D" cut top of curb at the curb return east side of Commercial Drive and Beltline Road.
Elev = 582.16

* MIN. FINISH FLOOR ELEVATION ARE FROM REPORT PREPARED BY O'BRIEN ENGINEERS DATED: 7/7/94

BELT LINE/MARSH BUSINESS PARK
BLOCK 2
VOL. 79252, PG. 0215

NO.	DATE	REVISION	APPROV.



TL CHENOWETH SURVEY, ABSTRACT NO. 273
D. METERS SURVEY, ABSTRACT NO. 923
CITY OF ADDISON, DALLAS COUNTY, TEXAS

DIMENSIONAL CONTROL PLAN
BLOCK 3, BELTLINE MARSH BUSINESS PARK
ADDISON, TEXAS

Scale: 1"=40'
Date: 1/11/94
Designed By: TL
Drawn By: TL
Checked By: MC
File: 04812DIM.DWG
Project No.: 04812.01

SHEET
C-3
OF
8

C:\04812\04812DIM.Plot Nov 28 16:31:07 1995 PLOTTED BY AJT