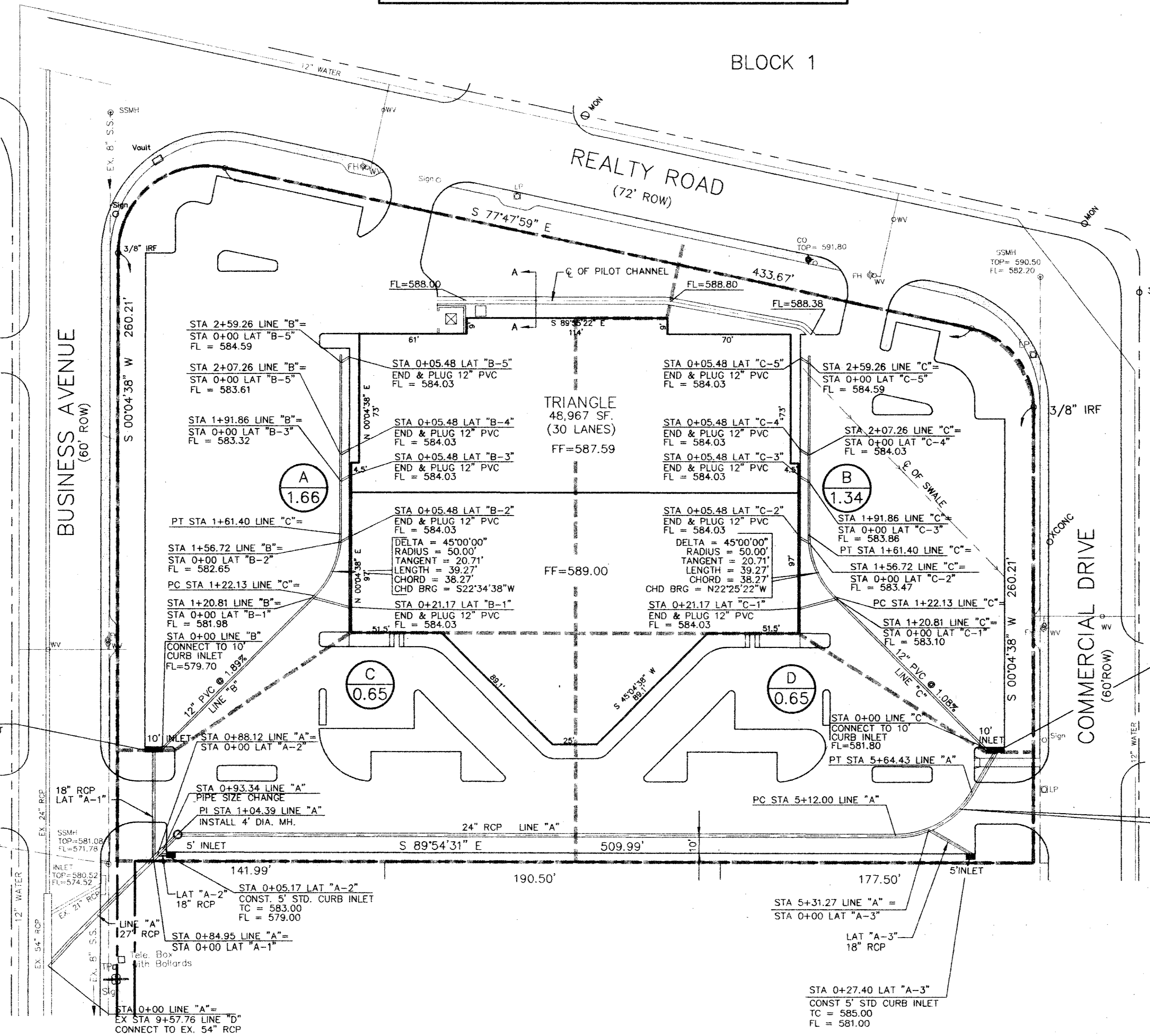
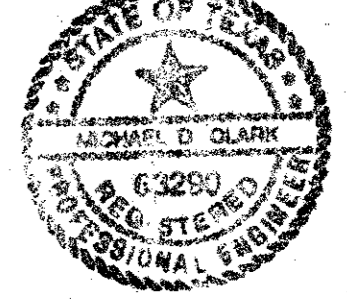


DELTA = 102'07'23"  
 RADIUS = 50.08'  
 TANGENT = 61.98'  
 LENGTH = 89.27'  
 CHORD = 77.91'  
 CHD BRG = N 51'08'20" E

BELT LINE/MARSH BUSINESS PARK  
 BLOCK 2  
 VOL. 79252, PG. 0215



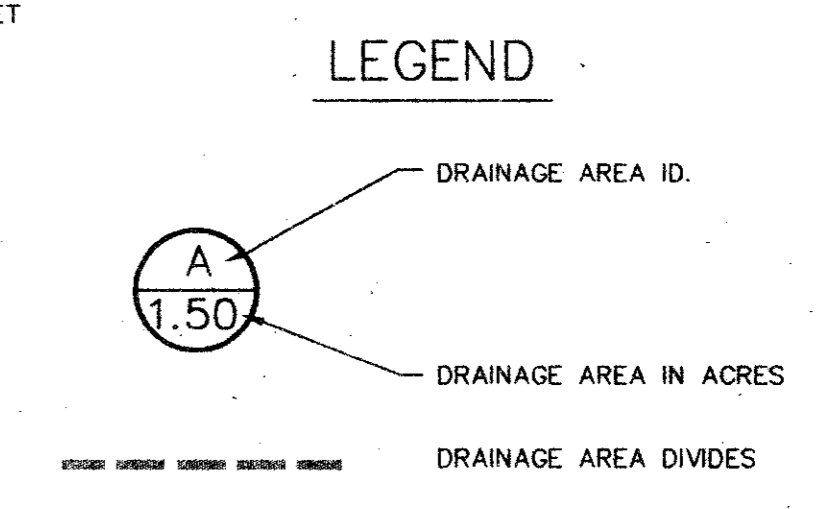
**AS-BUILT DRAWINGS**  
 TO THE BEST OF MY KNOWLEDGE THIS PROJECT WAS CONSTRUCTED IN SUBSTANTIAL ACCORDANCE WITH THE TOWN OF ADDISON STANDARDS AND SPECIFICATIONS, AND FUNCTIONS AS DESIGNED. WINKELMANN & ASSOCIATES, INC. DOES NOT CERTIFY AS TO THE QUALITY OR CORRECTNESS OF CONSTRUCTION, AS NO FIELD INSPECTION WAS PERFORMED.  
 WINKELMANN & ASSOCIATES, INC. DATE 11-29-95



**DRAINAGE AREA TABLE**

AREA ID.	AREA (AC.)	C	I <sub>100</sub>	T <sub>c</sub> (MIN)	Q <sub>100</sub>
A	1.66	0.9	8.88	10	13.3
B	1.34	0.9	8.88	10	10.5
C	0.65	0.9	8.88	10	5.2
D	0.65	0.9	8.88	10	5.2

DELTA = 77'52'37"  
 RADIUS = 44.80'  
 TANGENT = 36.20'  
 LENGTH = 60.90'  
 CHORD = 56.32'  
 CHD BRG = S 38'51'40" E



R = 50'  
 Δ = 60'04'38"  
 T = 28.91'  
 L = 52.43'  
 CL = 50.06'  
 BL = S 80'02'19" W

**BENCH MARK:**  
 "I" cut top of curb at the curb return east side of Commercial Drive and Beltline Road.  
 Elev = 582.16

\* MIN. FINISH FLOOR ELEVATION ARE FROM REPORT PREPARED BY O'BRIEN ENGINEERS DATED: 7/7/94

NO.	DATE	REVISION	APPROV.

**Winkelman & Associates, Inc.**  
 CONSULTING CIVIL ENGINEERS ■ SURVEYORS  
 12800 INDEPENDENCE ROAD, SUITE 200  
 DALLAS, TEXAS 75240  
 (214) 442-7888 FAX  
 (214) 442-7888

T.L. CHENOWETH SURVEY, ABSTRACT NO. 273  
 DIMEYERS SURVEY, ABSTRACT NO. 923  
 CITY OF ADDISON, DALLAS COUNTY, TEXAS  
 OWNER:  
 TRIANGLE BOWL  
 1717 N. BELTLINE ROAD  
 IRVING, TX 75061

**DRAINAGE PLAN**  
**BLOCK 3, BELTLINE MARSH BUSINESS PARK**  
**ADDISON, TEXAS**

Scale: 1"=40'  
 Date: 2/10/94  
 Designed By: TL  
 Drawn By: TL  
 Checked By: MC  
 File: 0482DRN.DWG  
 Project No.: 0482.01

**SHEET**  
 C-6  
 OF  
 8