

NO.	DATE	REVISION	APPROV.

Winkelmann & Associates, Inc.
 CONSULTING CIVIL ENGINEERS & SURVEYORS
 12800 HALLSBERRY ROAD, SUITE 100
 DALLAS, TEXAS 75250
 (214) 482-7900
 (214) 482-7999 FAX

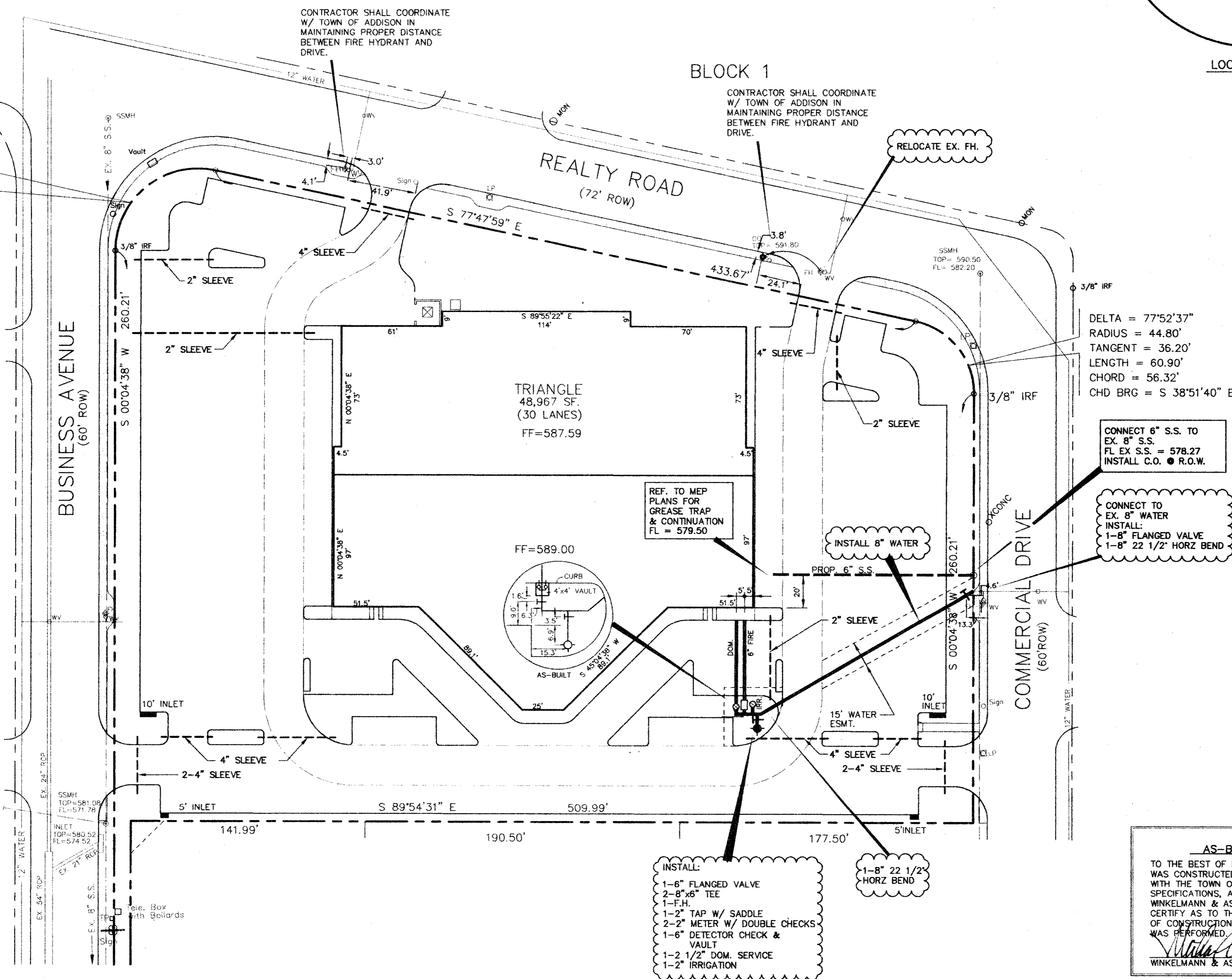
OWNER:
 TRIANGLE BOWL
 1717 N. BELTLINE ROAD
 IRVING, TX 75061

UTILITY PLAN
BLOCK 3, BELTLINE MARSH BUSINESS PARK
 ADDISON, TEXAS

Scale: 1"=40'
 Date: 2/10/95
 Designed By: TL
 Drawn By: TL
 Checked By: MC
 File: 0481201.DWG
 Project No.: 0481201

BELT LINE/MARSH BUSINESS PARK
 BLOCK 2
 VOL. 79252, PG. 0215

DELTA = 102°07'23"
 RADIUS = 50.08'
 TANGENT = 61.98'
 LENGTH = 89.27'
 CHORD = 77.91'
 CHD BRG = N 51°08'20" E



CONTRACTOR SHALL COORDINATE W/ TOWN OF ADDISON IN MAINTAINING PROPER DISTANCE BETWEEN FIRE HYDRANT AND DRIVE.

CONTRACTOR SHALL COORDINATE W/ TOWN OF ADDISON IN MAINTAINING PROPER DISTANCE BETWEEN FIRE HYDRANT AND DRIVE.

- SITE UTILITY GENERAL NOTES**
- UNLESS OTHERWISE NOTED, ALL MATERIALS AND CONSTRUCTION WILL CONFORM TO TOWN OF ADDISON STANDARD SPECIFICATIONS.
 - THE SITE UTILITY CONTRACTOR SHALL MAKE ARRANGEMENTS WITH THE APPROPRIATE UTILITY AUTHORITY FOR CONNECTION TO THE EXISTING MAINS.
 - ALL WATER LINES SHALL HAVE A MINIMUM COVER OF 48" ABOVE TOP OF PIPE.
 - CONTRACTOR SHALL INCLUDE IN HIS BID TO ADJUST LOCATION OF PROPOSED WATER LINES AS REQUIRED TO AVOID CONFLICTS WITH STORM SEWER OR OTHER UTILITIES.
 - THRUST BLOCKS SHALL BE PROVIDED AT ALL TEES, ELBOWS, AND BENDS OF SUFFICIENT SIZE TO COMPLY WITH MINIMUM STANDARDS OF N.E.P.A. - 24 FOR EXISTING SOIL CONDITIONS.
 - GATE VALVES SHALL BE CITY APPROVED AND WILL AT A MINIMUM BE RESILIENT SEAT CONFORMING TO AWWA C-509.
 - SHOULD LATENT SOIL CONDITIONS NECESSITATE, CONTRACTOR SHALL INSTALL SPECIAL SUPPORTS FOR PIPING AND/OR APPURTENANCES INCLUDING THE REMOVAL OF UNSUITABLE MATERIAL AND BACKFILLING WITH GRAVEL OR OTHER MATERIAL. CONTRACTOR SHALL PERFORM ANY SUCH WORK AS DIRECTED BY THE ENGINEER. COSTS SHALL BE INCLUDED IN THE BASE BID.
 - ALL MATERIALS SHALL BE U.L. LISTED AND FACTORY MUTUAL APPROVED UNLESS DIRECTED OTHERWISE BY THE ENGINEER.
 - THE EXISTING UTILITY FACILITIES AND LOCATIONS SHOWN ON THE DRAWINGS ARE TAKEN FROM READILY AVAILABLE INFORMATION. THE ACTUAL LOCATIONS OF THE UTILITY FACILITIES MAY VARY SOMEWHAT FROM THE LOCATIONS SHOWN AND THERE MAY BE UTILITY FACILITIES EXISTING THAT ARE NOT SHOWN OR INDICATED ON THE DRAWINGS. THE SITE UTILITY CONTRACTOR SHALL CONTACT ALL AGENCIES WITH UTILITY FACILITIES IN THE VICINITY OF THE WORK AND SHALL LOCATE ALL UNDERGROUND FACILITIES BEFORE BEGINNING WORK. THE CONTRACTOR SHALL PROTECT ALL UTILITY FACILITIES AND REPAIR ANY DAMAGES RESULTING FROM THEIR WORK, IN CONFORMANCE WITH THE CONTRACT DOCUMENTS AND SPECIFICATIONS AND RELOCATED IF REQUIRED.
 - CONNECTIONS TO EXISTING WATER LINE SHALL BE PERFORMED BY CONTRACTOR. THE SITE UTILITY CONTRACTOR SHALL COORDINATE WITH TOWN OF ADDISON AND PAY FOR CONNECTIONS.
 - CONTRACTOR IS RESPONSIBLE FOR OBTAINING & PAYING FOR ALL PERMITS REQUIRED TO COMPLETE ITS WORK.
 - ALL WORK TO CONFORM TO STATE AND LOCAL PLUMBING AND BACKFLOW PREVENTION CODES AND THE SPECIFICATIONS OF THE TOWN OF ADDISON UTILITY.
 - ALL WATER LINES 3" AND LARGER MUST BE DISCONNECTED. SAMPLES FROM THREE CONSECUTIVE DAYS MUST BE TAKEN TO AN APPROVED TESTING LAB, AND THE LAB ANALYSIS REPORTS MUST BE SUBMITTED TO THE WATER ENGINEERING DEPARTMENT SHOWING THAT THE SAMPLES HAVE PASSED THE TESTS FOR THREE CONSECUTIVE DAYS.
 - VACUUM BEAKERS MUST BE INSTALLED ON ALL EXISTING OR PROPOSED HOSE BIBBS, MOP/SERVICE SINKS, WALL/YARD HYDRANTS.
 - BACKFLOW DEVICE MUST BE TESTED BY A CROSS-CONNECTION CONTROL DEVICE INSPECTOR AT THE TIME OF INSTALLATION AND REPORT SUBMITTED TO WATER ENGINEERING BEFORE CERTIFICATE OF COMPLIANCE IS RELEASED.

DELTA = 77°52'37"
 RADIUS = 44.80'
 TANGENT = 36.20'
 LENGTH = 60.90'
 CHORD = 56.32'
 CHD BRG = S 38°51'40" E

CONNECT 6" S.S. TO EX. 8" S.S.
 FL EX S.S. = 578.27
 INSTALL C.O. @ R.O.W.

CONNECT TO EX. 8" WATER
 INSTALL 1-8" FLANGED VALVE
 1-8" 22 1/2" HORZ BEND

INSTALL:
 1-8" FLANGED VALVE
 2-8" TEE
 1-F.H.
 1-2" TAP W/ SADDLE
 2-2" METER W/ DOUBLE CHECKS
 1-6" DETECTOR CHECK & VAULT
 1-2 1/2" DOM. SERVICE
 1-2" IRRIGATION

1-8" 22 1/2" HORZ BEND

AS-BUILT DRAWINGS
 TO THE BEST OF MY KNOWLEDGE THIS PROJECT WAS CONSTRUCTED IN SUBSTANTIAL ACCORDANCE WITH THE TOWN OF ADDISON STANDARDS AND SPECIFICATIONS, AND FUNCTIONS AS DESIGNED. WINKELMANN & ASSOCIATES, INC. DOES NOT CERTIFY AS TO THE QUALITY OR CORRECTNESS OF CONSTRUCTION, AS NO FIELD INSPECTION WAS PERFORMED.
 Winkelmann & Associates, Inc. 11-1995
 WINKELMANN & ASSOCIATES, INC. DATE



BENCH MARK:
 "U" cut top of curb at the curb return east side of Commercial Drive and Beltline Road.
 Elev = 582.16

* MIN. FINISH FLOOR ELEVATION ARE FROM REPORT PREPARED BY O'BRIEN ENGINEERS DATED: 7/7/94

SHEET
 C-8
 OF