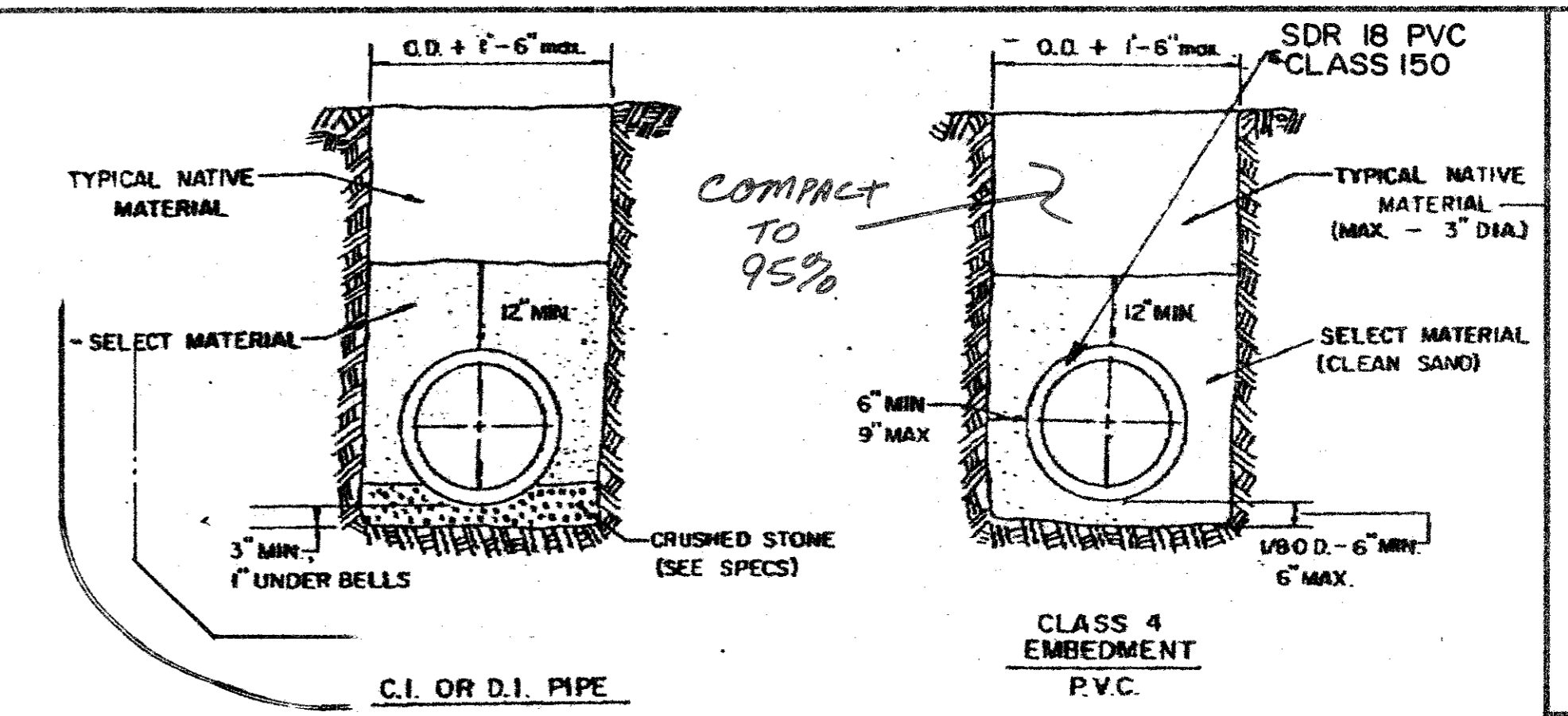


BUSINESS AVE



EMBEDMENT DETAILS FOR WATER MAIN

STA. 0+00  
CONNECT TO  
EXISTING 8" FH  
LEAD LINE  
-CONFIRM ELD  
OF 8" WL.

STA. 0+06  
RELOCATE EXIST.  
FH 1-8"X6 TEE  
5 LF 6" WL  
1-8" G.V.

STA. 0+13  
P.I. 90° LT. -8" TEE  
1-8" G.V.  
1-8" PLUG

STA. 0+90.5  
P.I. 57° 18' 51" LT

STA. 2+98.95  
P.I. 5 20° 08' 10.7"

SEE SHT. A-1  
FOR CONTINUATION

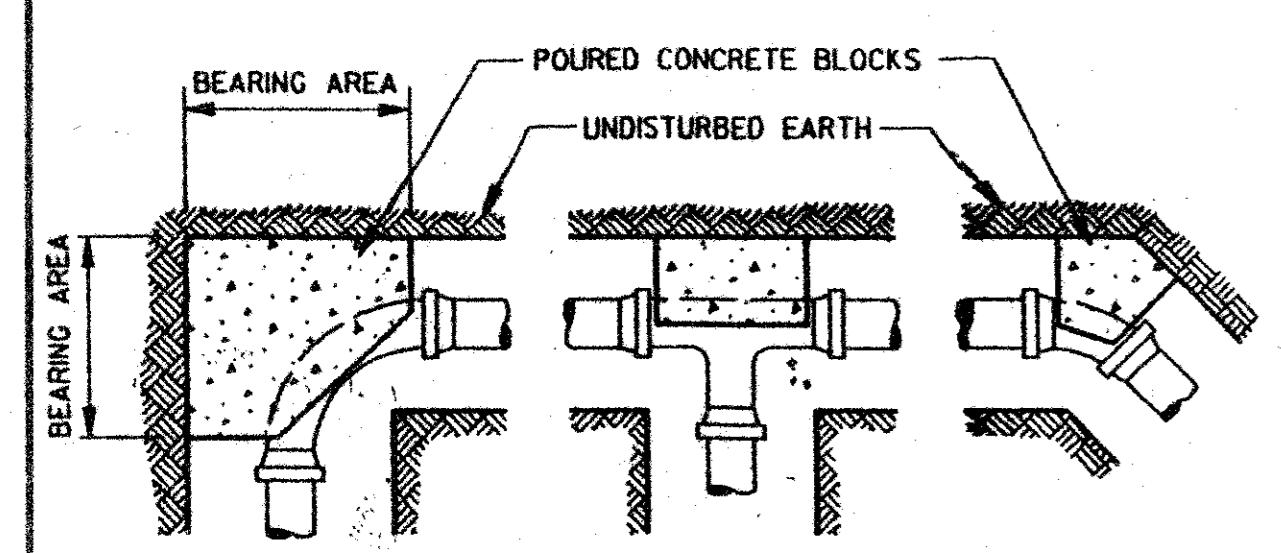
STA. 2+67 (E OF DRIVE)  
P.I. 5 20° 08' 10.7"

BELT LINE ROAD

PRINTED AND ADJ. NO. 1  
VOL. 29013, PG. 0827

GENERAL NOTES:

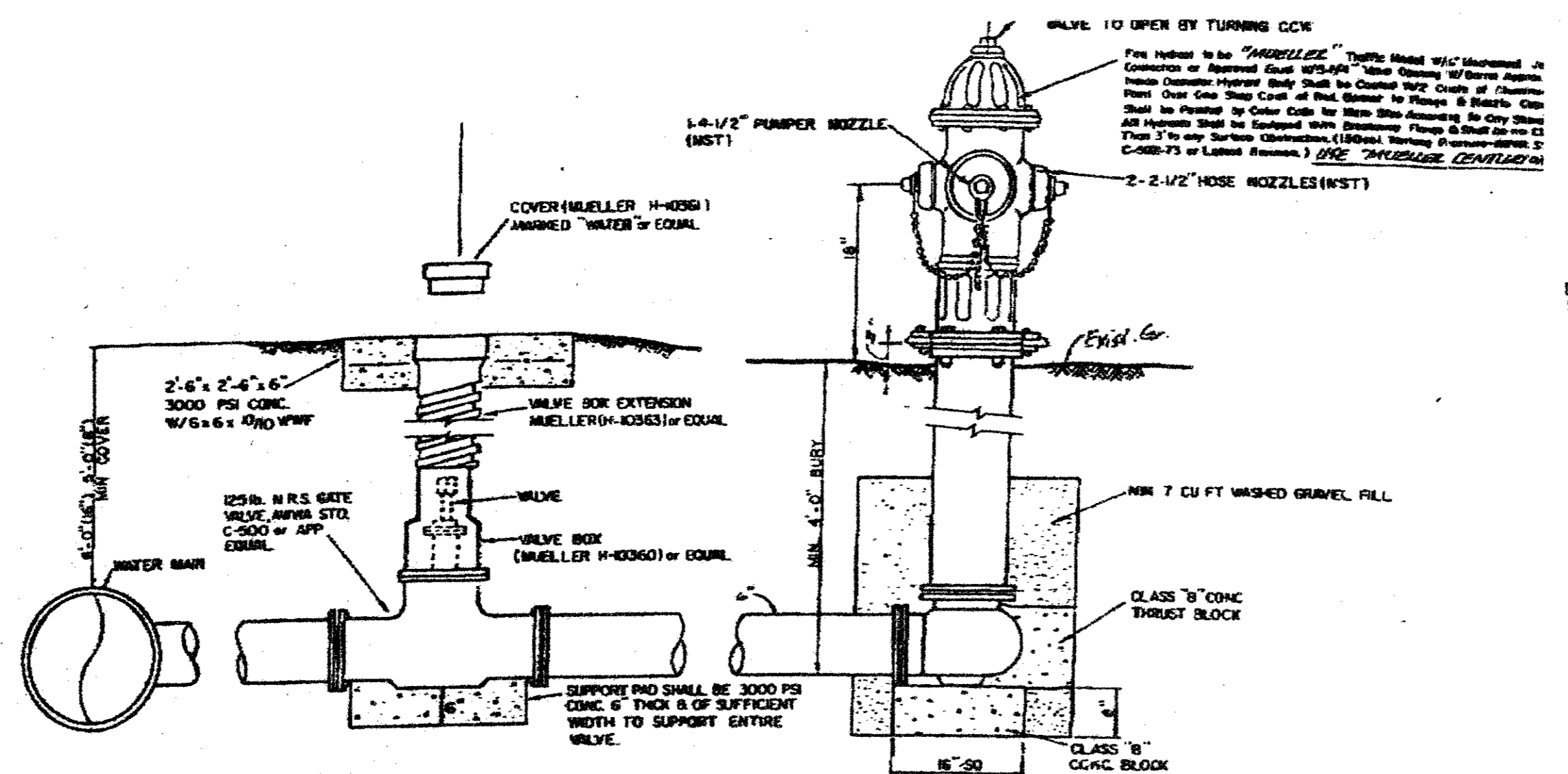
1. The water line Contractor shall be an approved Utilities Contractor in the Town of Addison.
2. All water line construction materials and practices shall be in accordance with Town of Addison standards.



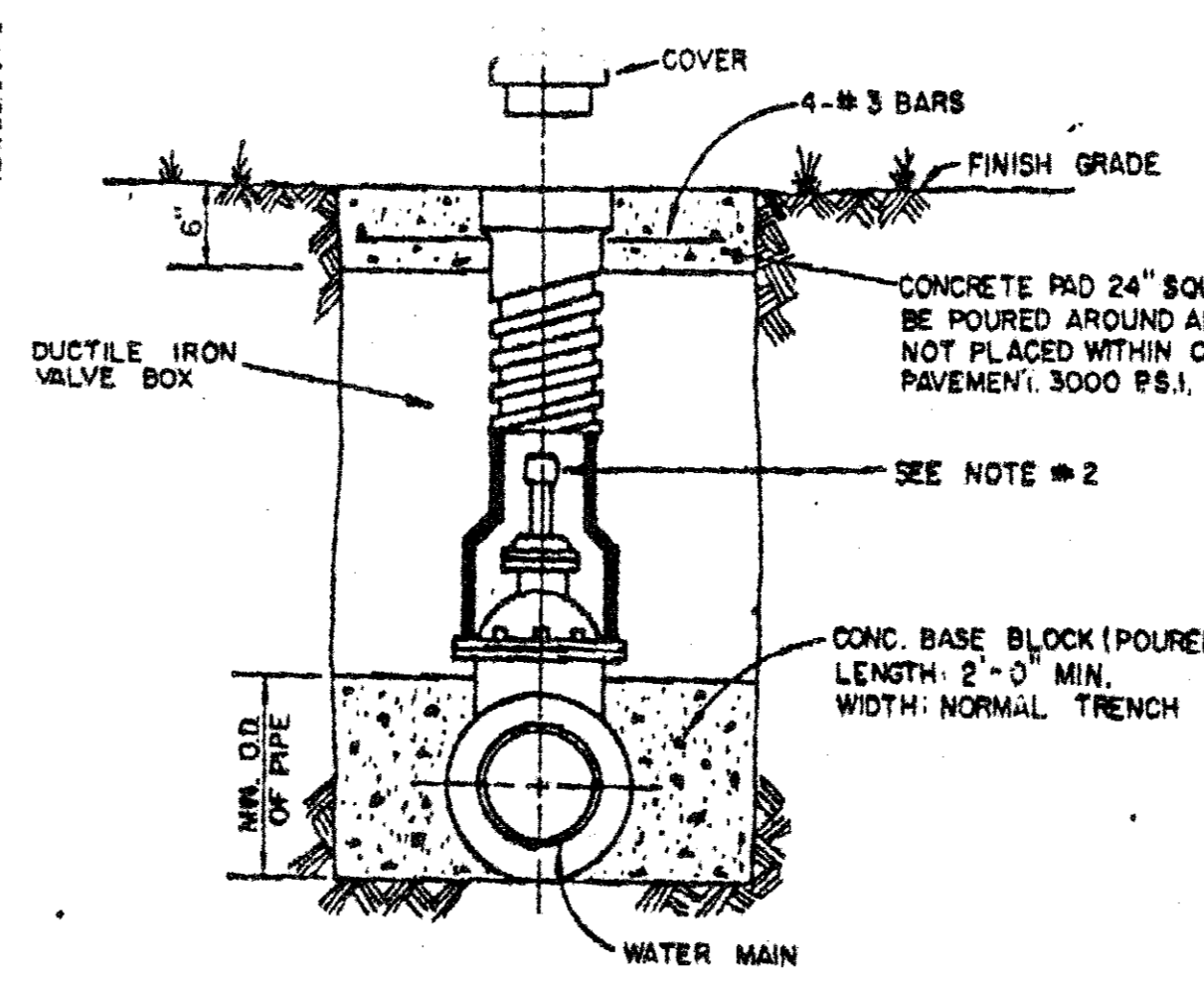
BEARING AREA OF BLOCK IN SQ. FT.			
FITTING SIZES	TEE AND END	90° BEND	45° BEND
6"	7.2	10.8	5.0
8"	12.6	17.8	9.6
10"	19.8	27.8	15.2
12"	28.4	40.0	21.8

THRUST BLOCK DETAILS

N.T.S.



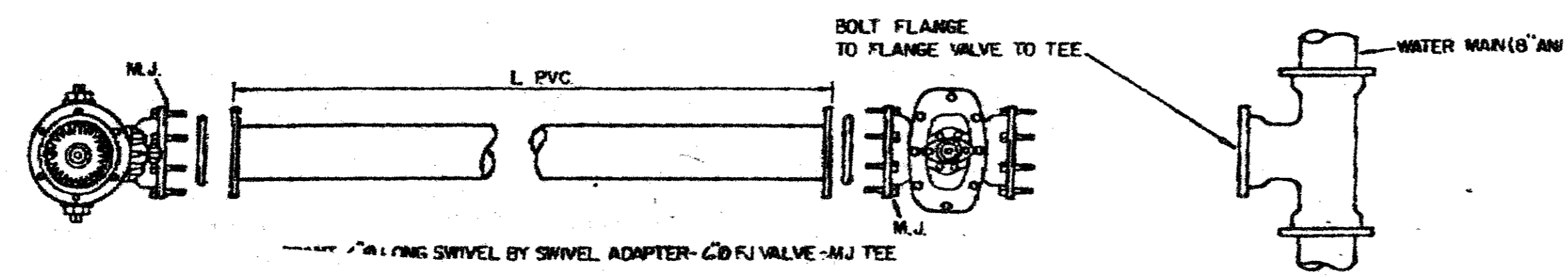
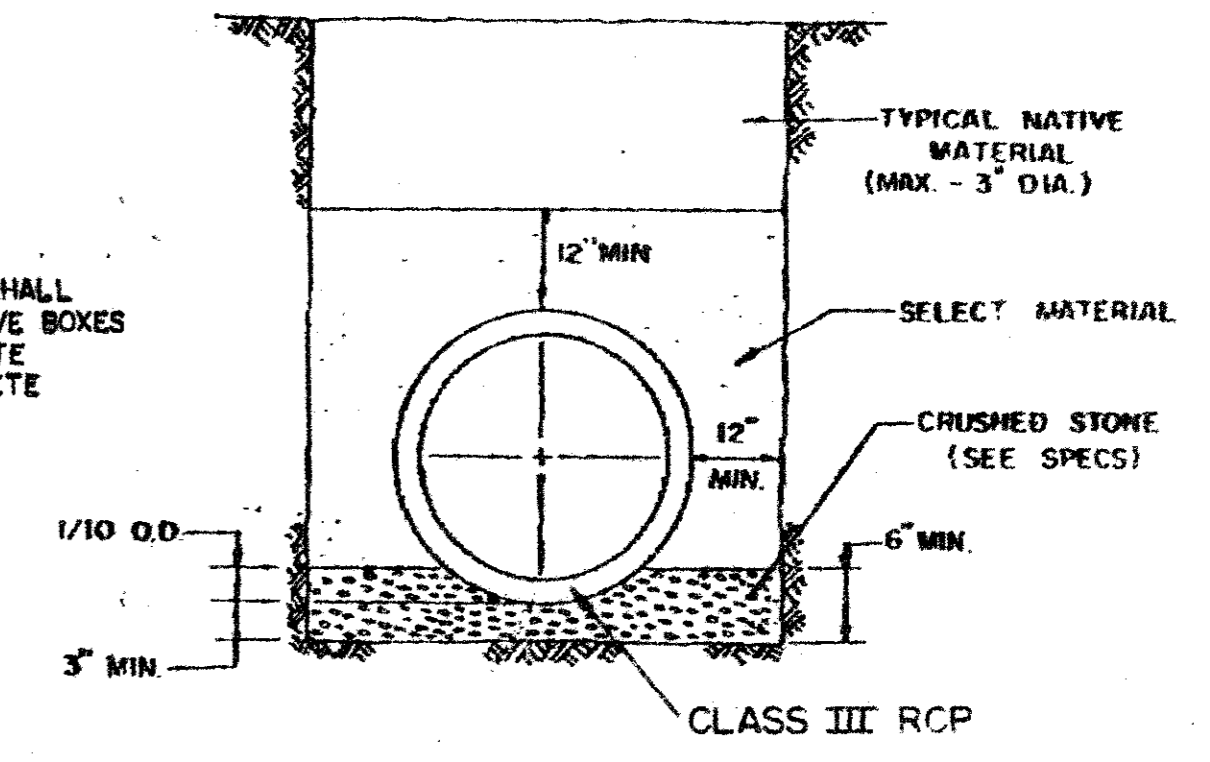
VALVE BOX DETAIL (SEE PLANS FOR "MAIN SIZE")  
FIRE HYDRANT INSTALLATION (INCLUDES "H" VALVE)



- NOTE:
1. GATE VALVES SHALL BE IN ACCORDANCE WITH AWWA STANDARD C-509-80 OR LATEST THEREOF ALL VALVES SHALL BE "MUELLER" OR APPROVED EQUAL.
  2. A PERMANENTLY ATTACHED VALVE EXTENSION STEM SHALL BE REQUIRED FOR ANY VALVE THATS OPERATING NUT IS LOCATED IN EXCESS OF 4 FEET BELOW THE TOP OF VALVE BOX THIS EXTENSION SHALL BE OF SUFFICIENT LENGTH TO INSURE THAT ITS TOP IS WITHIN 4" OF VALVE BOX LID. MANUFACTURED VALVE-STACK DUCTILE IRON PIPE TO BE USED FOR EXTENSION GREATER THAN 4'-0" BELL END OF STACK TO BE FITTED OVER VALVE. VALVE AND VALVE STACK IS TO BE POLY WRAPPED.
  3. VALVES SHALL BE OF DUCTILE IRON W/RUBBER ENCAPSULATED DISK BODY BOLTS SHALL BE STAINLESS STEEL OF SAME SIZE ON EACH VALVE.

TYPICAL VALVE SETTING AND BOX

EMBEDMENT DETAIL FOR STORM SEWER



OFF-SITE WATER LINE

SCALE: 1"=20'

REVISION DATA

SPAGHETTI WAREHOUSE, INC.  
6120 ALDWICK DRIVE GARLAND, TEXAS 75043  
214-226-6000 CONTACT - JAMES AITKEN

PROJECT DATA

ADDRESS 9820 BELT LINE ROAD  
CITY ADDISON  
STATE TEXAS

DATE 7/31/92  
SHEET

A:IG  
OF 15 SHEETS