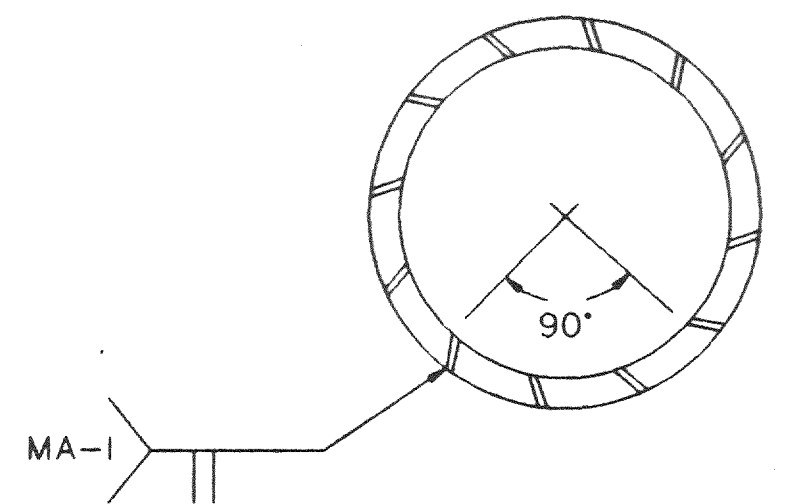
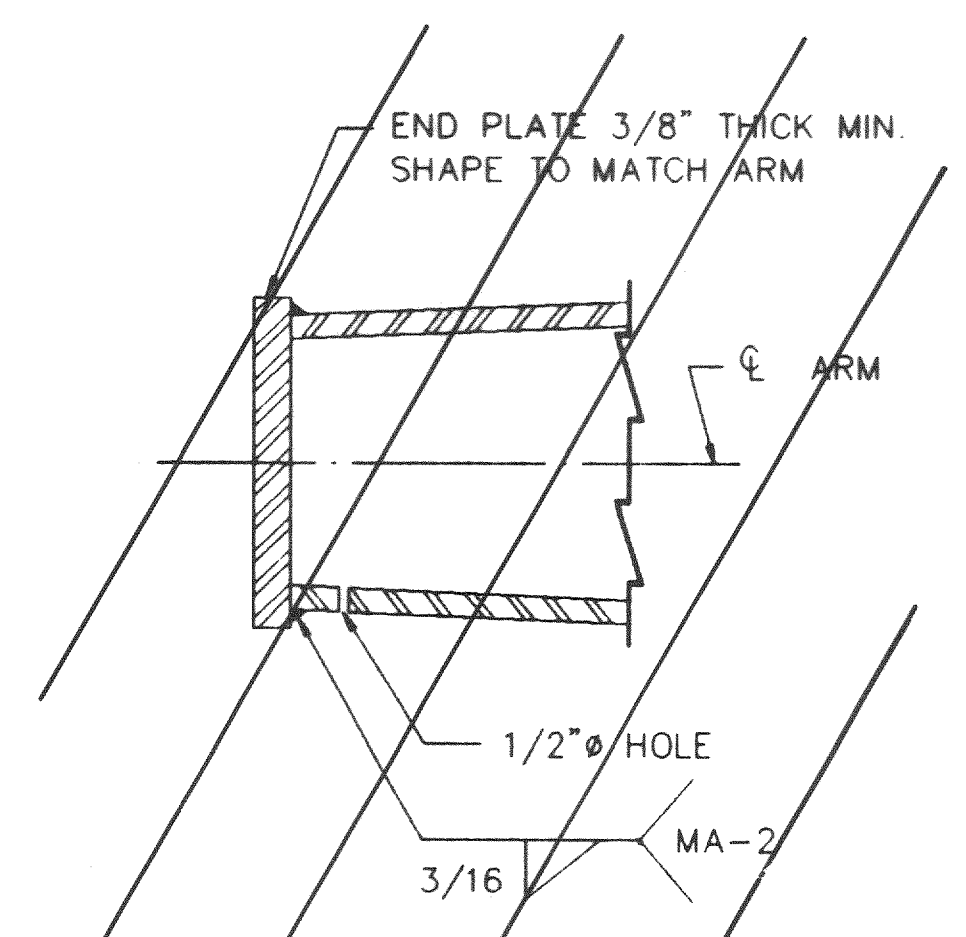


COUPLING DETAILS



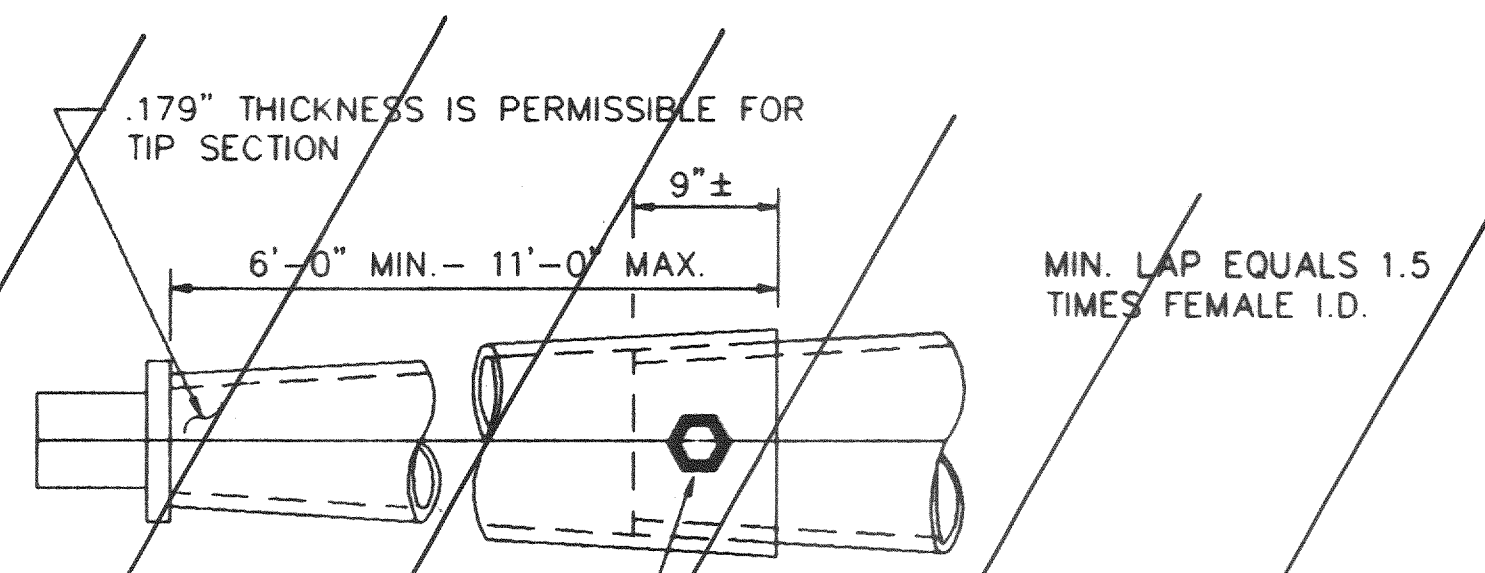
LONGITUDINAL SEAM WELD MUST BE ORIENTED WITHIN THE LOWER 90° OF THE SIGNAL ARM.

ARM WELD DETAIL



NOTE :  
"POLE MANUFACTURER SHALL DRILL 1/2" HOLE IN BOTTOM OF MAST ARM AT END PLATE"  
(FOR HOT-DIP GALVANIZING)

PLATE WELD DETAIL

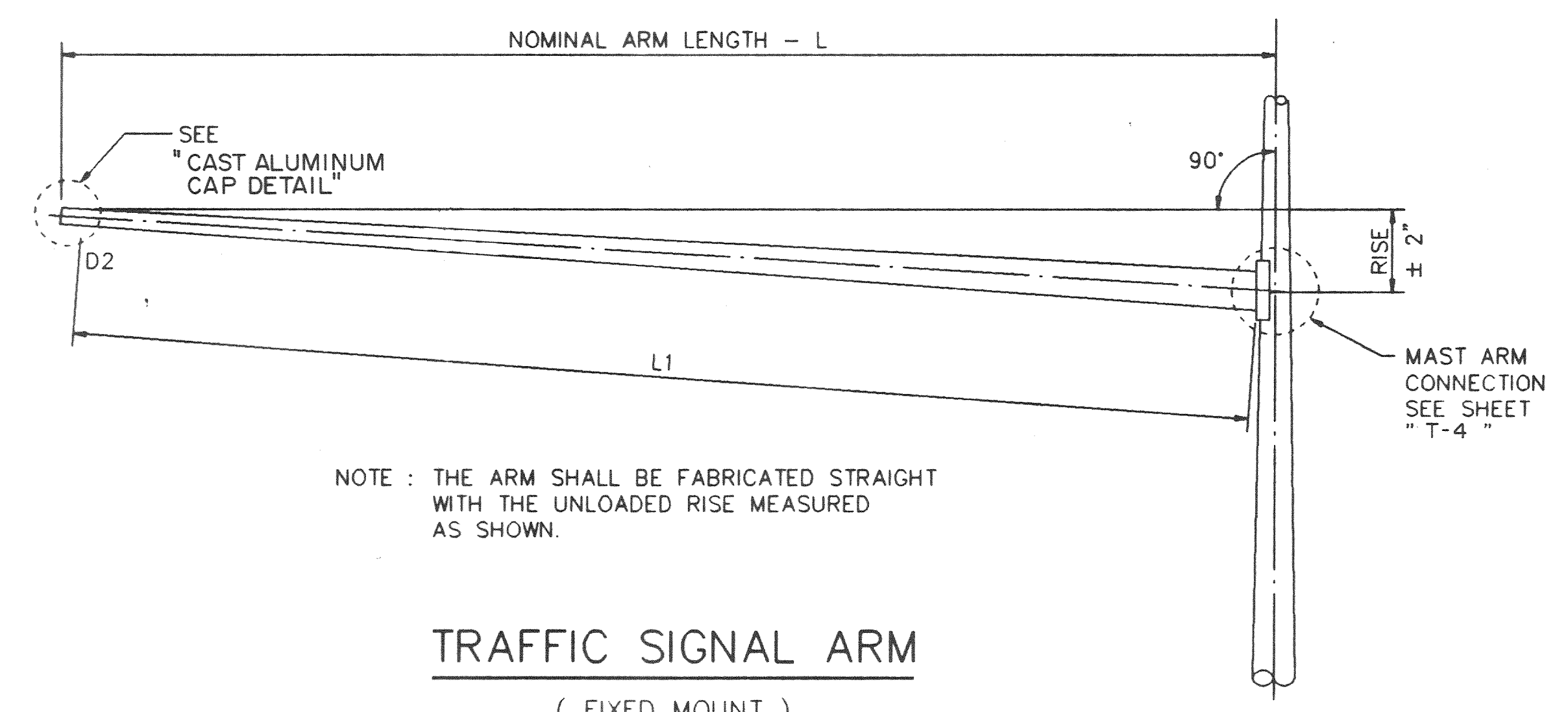


NOTE :

A SLIP JOINT IS PERMISSIBLE FOR ARMS 40' AND GREATER IN LENGTH. THE SLIP JOINT SHALL BE MADE IN THE SHOP, BUT MAY BE MATCH MARKED AND SHIPPED DISASSEMBLED.

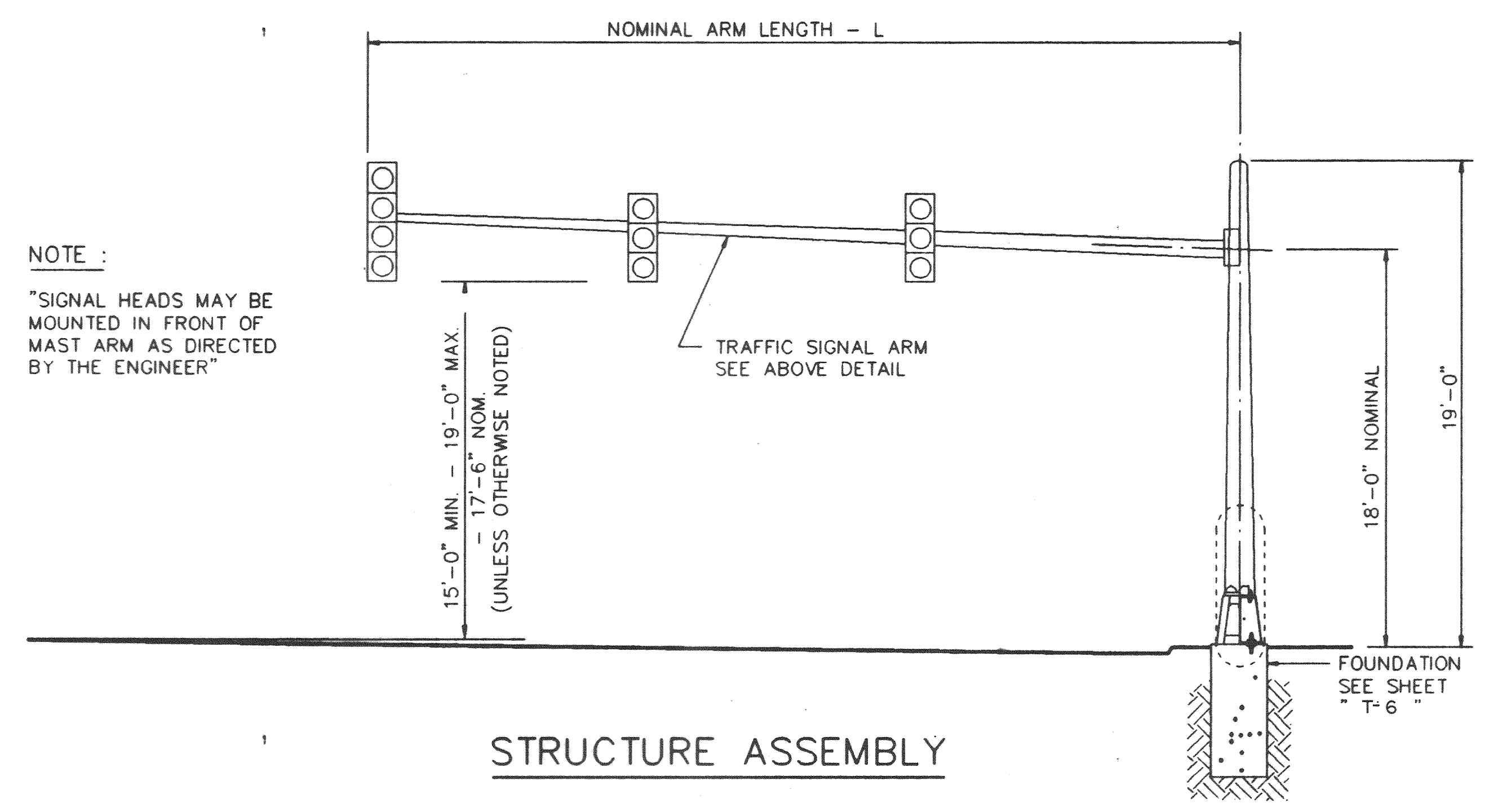
4-3/4" HOLES AND 1-5/8" GALV. A307 BOLT. TACK WELD NUT TO THREAD PROJECTION AFTER MAKING JOINT. REPAIR DAMAGED GALVANIZING IN ACCORDANCE WITH THE SPECIFICATIONS.

SLIP JOINT DETAILS



NOTE : THE ARM SHALL BE FABRICATED STRAIGHT WITH THE UNLOADED RISE MEASURED AS SHOWN.

TRAFFIC SIGNAL ARM  
( FIXED MOUNT )



NOTE :

"SIGNAL HEADS MAY BE MOUNTED IN FRONT OF MAST ARM AS DIRECTED BY THE ENGINEER"

STRUCTURE ASSEMBLY

AS BUILTS

I CERTIFY THIS PROJECT WAS CONSTRUCTED IN GENERAL CONFORMANCE WITH THESE CONSTRUCTION PLANS AND WILL FUNCTION AS DESIGNED.

*James A. Cates*  
01/16/93

*John F. ...*  
7-12-92

MAST ARM DETAILS						
BELTLINE RD. EAST OF MARSH LN.						
TOWN OF ADDISON, TEXAS						
LAWRENCE A. CATES & ASSOC. CONSULTING ENGINEERS DALLAS, TEXAS						
DESIGN	DRAWN	DATE	SCALE	NOTES	FILE	NO.
LAC	LAC	8/24/92	NT S		92023	T3