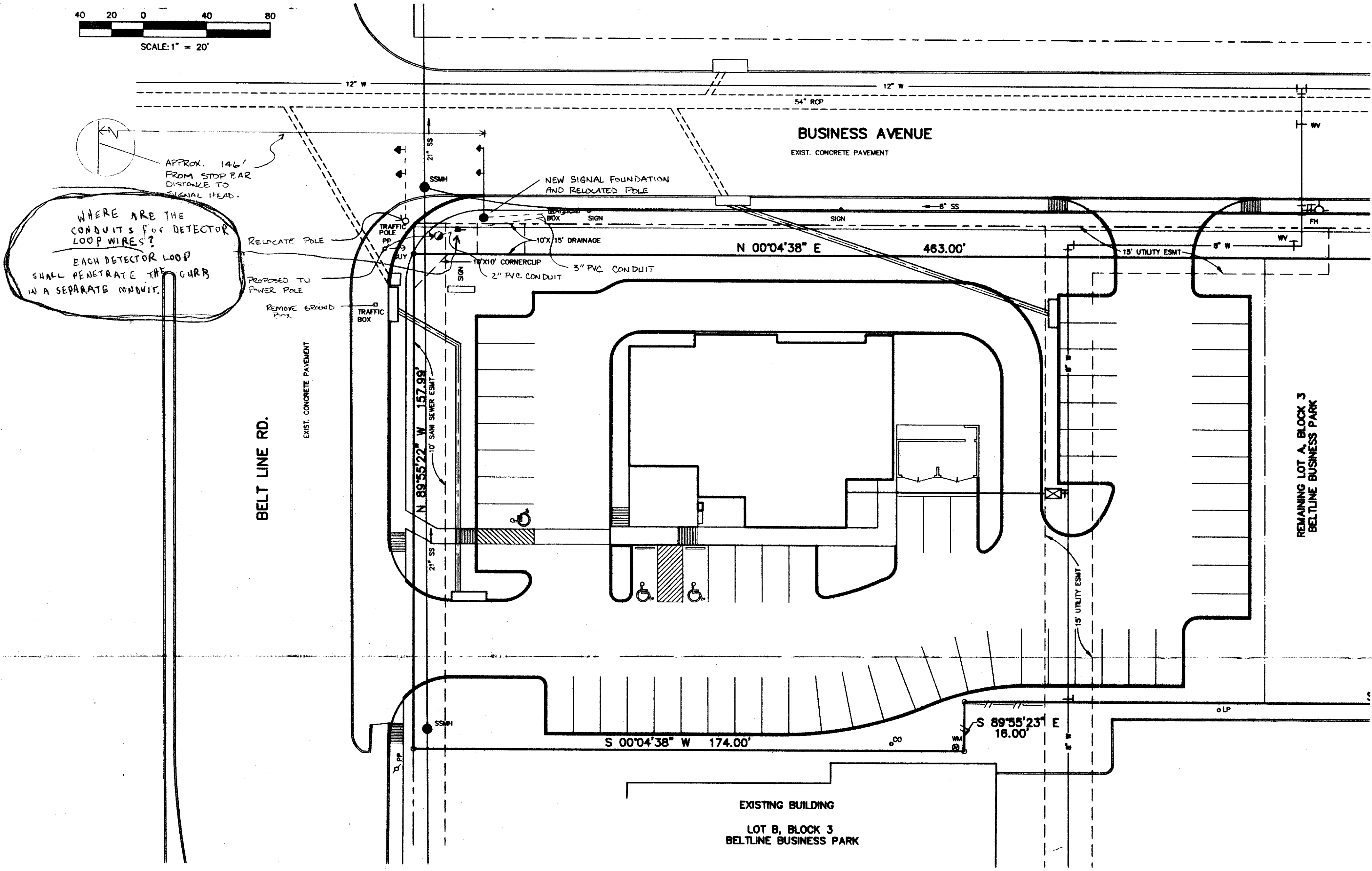
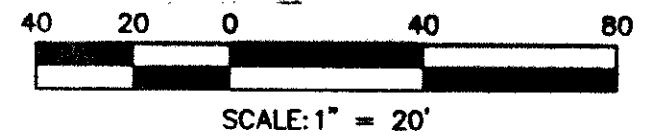


NORTH



WHERE ARE THE CONDUITS FOR DETECTOR LOOP WIRES?
EACH DETECTOR LOOP SHALL PENETRATE THE CURB IN A SEPARATE CONDUIT.

LEGEND

- TRAFFIC SIGNAL POLE
- PROPOSED PVC CONDUIT
- PROPOSED GROUND BOX
- PROPOSED UTILITY POWER POLE

Mahesh Mohan
12/14/99

TRAFFIC SIGNAL RELOCATION						
PARKWAY CONSTRUCTION						
BELT LINE RD @ BUSINESS						
TOWN OF ADDISON, TEXAS						
DESIGN	DRAWN	APPR.	SCALE	DATE	PROJECT NO.	NO.
			NTS			