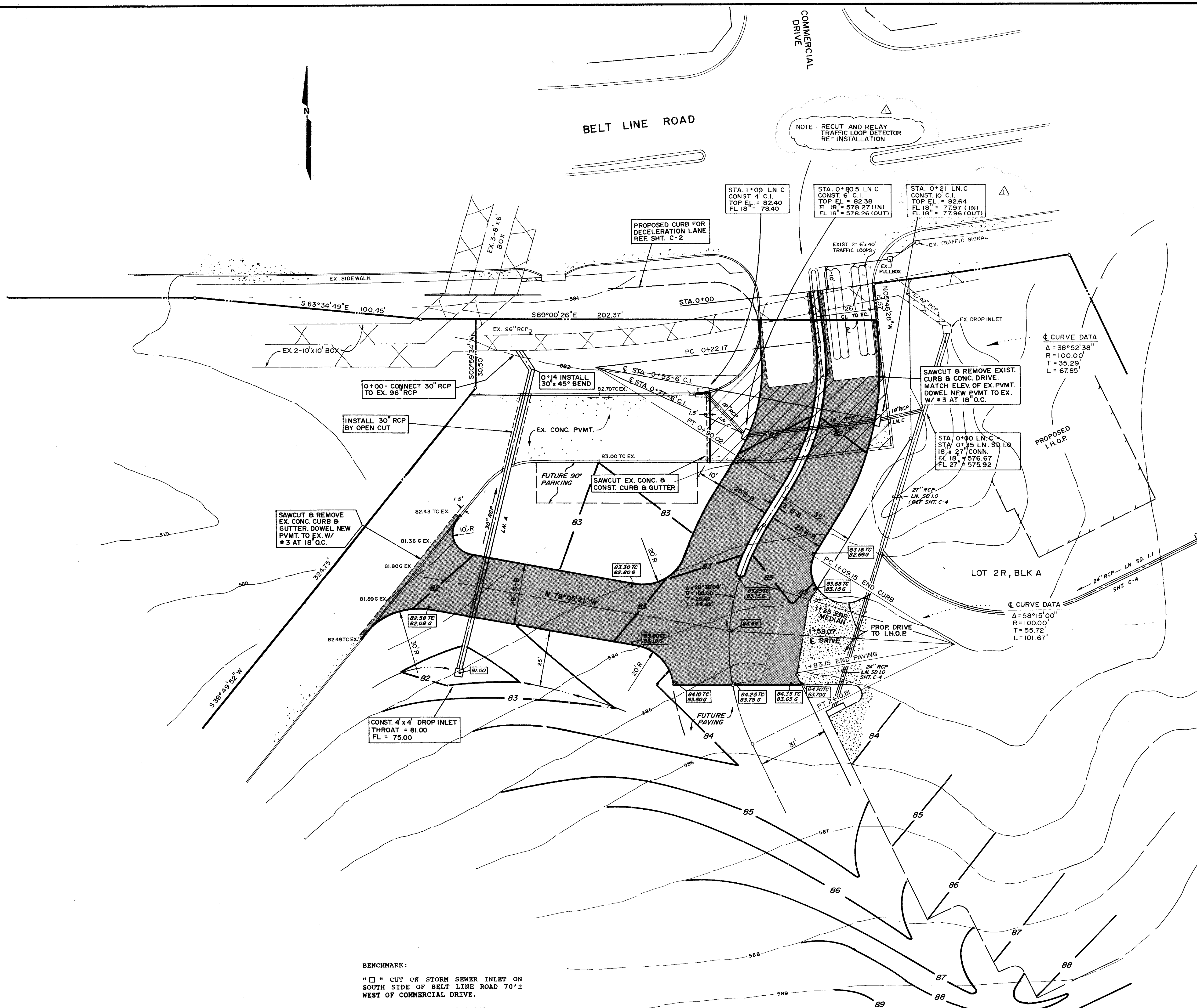


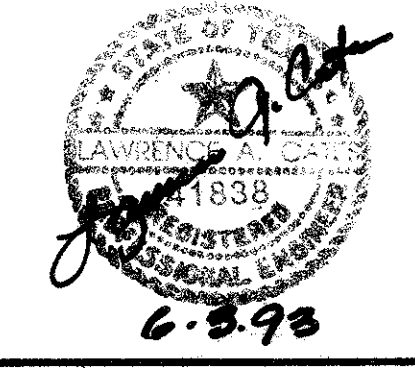
GENERAL NOTES

1. PRIOR TO FINAL ACCEPTANCE BY THE TOWN OF ADDISON:
  - a. A TEXAS REGISTERED PROFESSIONAL ENGINEER SHALL CERTIFY THAT THE PORTION OF THE PROJECT BEING DEDICATED TO ADDISON WAS CONSTRUCTED IN ACCORDANCE WITH THE PLANS AND SPECIFICATIONS APPROVED BY THE TOWN OF ADDISON.
  - b. A ONE (1) YEAR MAINTENANCE BOND IS REQUIRED FOR THE CITY'S PORTION OF THE INFRASTRUCTURE.
  - c. CONTRACTOR SHALL DEMONSTRATE THAT THE WATER AND SANITARY SEWER SYSTEMS MEET THE PROPER PRESSURE, BACTERIA AND MANDREL TESTS.
2. PRIOR TO STARTING CONSTRUCTION, THE CONTRACTOR SHALL CONTACT THE UTILITY COMPANIES TO LOCATE EXISTING FACILITIES. THESE INCLUDE BUT MAY NOT BE LIMITED TO THE FOLLOWING:
  - a. TOWN OF ADDISON
  - b. LONE STAR GAS
  - c. SOUTHWESTERN BELL
  - d. STORER CABLE
  - e. PLANNED CABLE SYSTEMS
  - f. TU ELECTRIC
3. PRIOR TO BEGINNING CONSTRUCTION, THE OWNER OR HIS AUTHORIZED REPRESENTATIVE SHALL CONVEY A PRE-CONSTRUCTION CONFERENCE BETWEEN THE TOWN OF ADDISON, CONSULTING ENGINEER, CONTRACTOR(S), UTILITY COMPANIES AND ANY OTHER AFFECTED PARTIES. NOTIFY BRUCE ELLIS AT 450-2847 AT LEAST 48 HOURS PRIOR TO THE TIME OF THE CONFERENCE AND 48 HOURS PRIOR TO BEGINNING OF CONSTRUCTION.
4. ANY EXISTING PAVEMENT, CURB(S) AND/OR SIDEWALKS DAMAGED OR REMOVED WILL BE REPAIRED BY THE CONTRACTOR AT THEIR EXPENSE.
5. LOT PINS SHALL BE IN PLACE DURING CONSTRUCTION AND PRIOR TO FINAL ACCEPTANCE. CONCRETE MONUMENTS SHALL BE PLACED ON ALL BOUNDARY CORNERS, BLOCK CORNERS, CURVE POINTS AND ANGLE POINTS IN PUBLIC RIGHT-OF-WAY. CONCRETE MONUMENTS SHALL BE SIX (6) INCHES IN DIAMETER AND TWENTY-FOUR (24) INCHES LONG. A COPPER PIN ONE-FOURTH INCH IN DIAMETER EMBEDDED AT LEAST THREE (3) INCHES IN THE MONUMENT AT THE EXACT INTERSECTION POINT OF THE MONUMENT. THE MONUMENTS SHALL BE SET AT SUCH AN ELEVATION THAT AFTER CONSTRUCTION, THE TOP OF THE MONUMENT WILL NOT BE LESS THAN TWELVE (12) INCHES BELOW THE GROUND SURFACE.
6. CONTRACTOR SHALL OBTAIN A RIGHT-OF-WAY PERMIT BY THE TOWN OF ADDISON FOR WORKING WITHIN THE PUBLIC RIGHT-OF-WAY EASEMENTS.
7. DURING CONSTRUCTION, THE OWNER SHALL PROVIDE A QUALIFIED GEOTECHNICAL LAB TO PERFORM MATERIALS TESTING DURING THE CONSTRUCTION, AT THE REQUEST OF THE TOWN OF ADDISON.
8. THE CONTRACTOR SHALL SUBMIT MATERIAL SHEETS TO THE TOWN OF ADDISON FOR APPROVAL PRIOR TO INCORPORATING MATERIALS INTO THE JOB.



BENCHMARK:  
 \* □ \* CUT ON STORM SEWER INLET ON SOUTH SIDE OF BELT LINE ROAD 70'± WEST OF COMMERCIAL DRIVE.  
 ELEV. 580.56'

REV. 7/06/93 REV. INLET TO 10" C.I.  
 REV. 6/21/93



<b>I.H.O.P. ACCESS DRIVE</b>						
<b>PRINTEMPS ADDITION NO. 2</b>						
<b>TOWN OF ADDISON, TX.</b>						
LAWRENCE A. CATES & ASSOC.						CONSULTING ENGINEERS DALLAS, TEXAS
DESIGN	DRAWN	DATE	SCALE	NOTES	FILE	NO.
LAC	LAC	5/28/93	1" = 20'	D.P.	92076	C-3