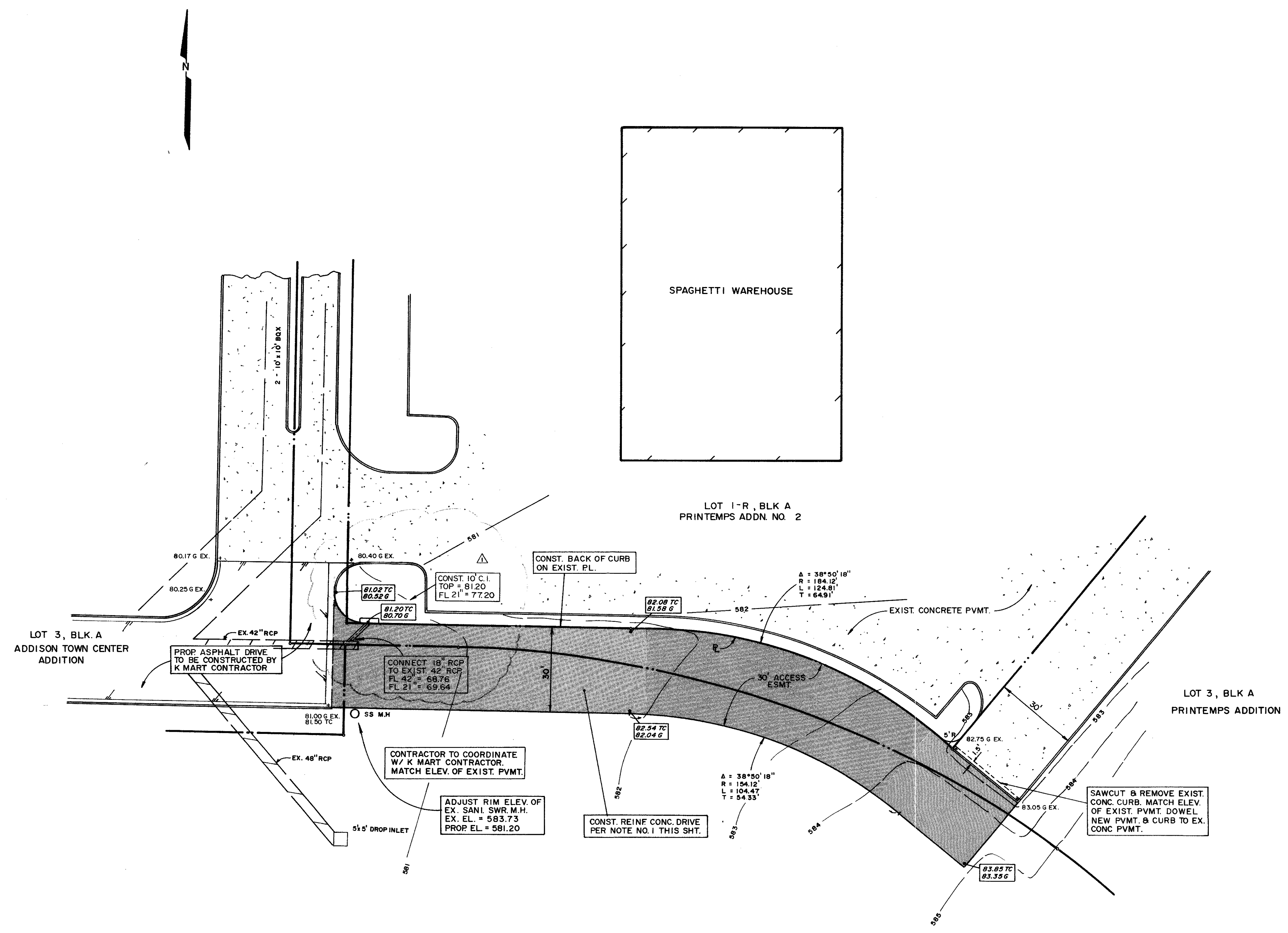
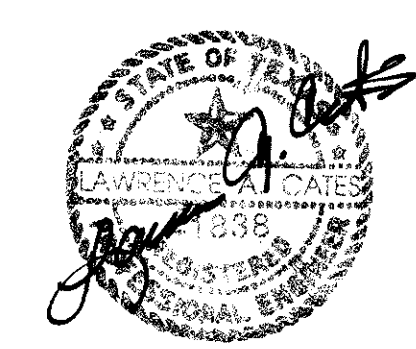


PAVING GENERAL NOTES

1. ALL CONCRETE PAVING SHALL BE 6" THICKNESS AND BE 3,000 PSI CONCRETE AT 28 DAYS WITH A MIXTURE THAT IS A MINIMUM OF FIVE SACKS PER CUBIC YARD AND HAVING A ONE INCH TO FOUR INCH SLUMP AND REINFORCED WITH #3 BARS @ 18" O.C.E.W. FOR 6" THICK PAVEMENT AND REINFORCING SHALL BE SUPPORTED BY CHAIRS AND SPACED AT 16 S.F. MAXIMUM INTERVAL.
2. SUBGRADE SHALL BE SCARIFIED TO A DEPTH OF SIX INCHES (6") AND RECOMPACTED TO 95% STANDARD PROCTOR DENSITY AT ±3% OPTIMUM MOISTURE CONTENT.
3. SEALANT MATERIAL TO BE 0A55 ASPHALT OR A RUBBER BASED COMPOUND. SPECIFICATIONS TO BE SUBMITTED TO THE ENGINEER PRIOR TO INSTALLATION.
4. BREAKOUTS FOR REMOVAL OF EXISTING PAVEMENT AND CURBS SHALL BE MADE BY SAW CUT WHEN ADJACENT TO PROPOSED PAVING AND/OR CURBS.
5. PROPOSED CONCRETE CURBS SHALL MATCH ELEVATIONS OF EXISTING CURB.
6. CONCRETE TO BE FLOAT FINISHED AND CURED FOR A MINIMUM OF 72 HOURS.
7. ALL WORKMANSHIP AND MATERIALS SHALL BE ACCORDANCE WITH TOWN OF ADDISON STANDARD SPECIFICATIONS AND/OR SPECIFICATIONS ESTABLISHED BY THIS PROJECT.
8. CONTRACTOR SHALL SUBMIT A JOINT SPACING PLAN TO THE ENGINEER PRIOR TO PLACEMENT OF CONCRETE PAVEMENT. CONTROL JOINTS SHALL BE INSTALLED AT A MAXIMUM SPACING OF 15' O.C.E.W. EXPANSION JOINTS SHALL BE INSTALLED AT A MAXIMUM SPACING OF 90'. CONCRETE SHALL BE PLACED IN STRIPS NOT TO EXCEED 30 FEET IN WIDTH. LEVEL UP SAND COARSE WILL NOT BE ALLOWED. JOINT SPACING PLAN SHOULD BE SUBMITTED TO ENGINEER FOR APPROVAL.
9. CONTRACTOR WILL PROVIDE A TWO (2) YEAR UNCONDITIONAL MAINTENANCE FREE WARRANTY ON PORTLAND CEMENT CONCRETE PAVEMENT.



BENCHMARK:
 " " CUT ON STORM SEWER INLET ON
 SOUTH SIDE OF BELT LINE ROAD 70'±
 WEST OF COMMERCIAL DRIVE.
 ELEV. 580.56'



06-03-93

REV. 7/07/93 ADDED 10' C.I.
 REV. 6/21/93

ACCESS DRIVE						
SPAGHETTI WAREHOUSE						
BELT LINE ROAD						
TOWN OF ADDISON, TX.						
LAWRENCE A. CATES & ASSOC.						CONSULTING ENGINEERS DALLAS, TEXAS
DESIGN	DRAWN	DATE	SCALE	NOTES	FILE	NO.
LAC	LAC	5/26/93	1" = 20'	D.P.	92023	C-4