

N 48°56'11" W
13.12'

N 0°04'38" E

COMMERCIAL DR.

DR.

(60' ROW)

1-12" X 8" TAPPING SLEEVE

VALVE BOX WITH 8" VALVE

BELT LINE

LINE

Δ 10°08'36"
R= 1860.0'
T= 165.07'
L= 329.29'

ROAD

Seven Story Office Building

Three Story Parking Garage

DIMENSION CONTROL

CV. 1
Δ = 73° 38' 13"
R = 42.0'
L = 48.84'
T = 28.45'

CV. 2
Δ = 90°
R = 42.0'
L = 59.69'
T = 38.0'

- General Notes:
1. Do Not Scale Dimensions Control
 2. Refer To Architectural Plans For All Building Dimensions
 3. All Dimensions are to Back of Curb or Face of Building unless otherwise Indicated

SCALE: 1"=20'0"

| MATERIAL LIST | |
|--|------------------------|
| FIRE HYDRANTS = 3 ea. | 8" WATER LINE = 960 LF |
| MANHOLE = 2 ea. | 8" 45° BENDS = 9 ea. |
| B.M. = 2 ea. | 8" TEES = 4 ea. |
| MANHOLE = 2 ea. | 8" VALVES = 2 ea. |
| Cut on conc curb center of radius 41' LF | |
| N.E. corner Realty Rd. at Marsh Ln. ELEV. 584.28 | |
| 12" X 8" TAPPING SLEEVES = 2 ea. | |
| VALVE BOXES = 7 ea. | |
| 6" VALVES = 5 ea. | |
| 6" WATER LINE = 48 LF | |

| | |
|--|---|
| Don A. Tipton, Inc. Consulting Engineers | 6330 Bell Line Rd. Garland, Texas 75043 |
| PROJECT NO. | FILE NO. |
| DATE | SCALE |
| INC | DATE |
| INC | DATE |

COMMERCIAL CENTER I
3939 BELT LINE ROAD ADDISON, TEXAS 75001
A PROJECT OF
LA FOUNTAIN DEVELOPMENT COMPANY
1700 ALMA DRIVE PLANO, TEXAS 75075

REVISIONS
20 SEPT 1984
1 Oct 1984
21 Oct 1984

DATE
August 1, 1984
ARCHITECT'S PROJECT NO.

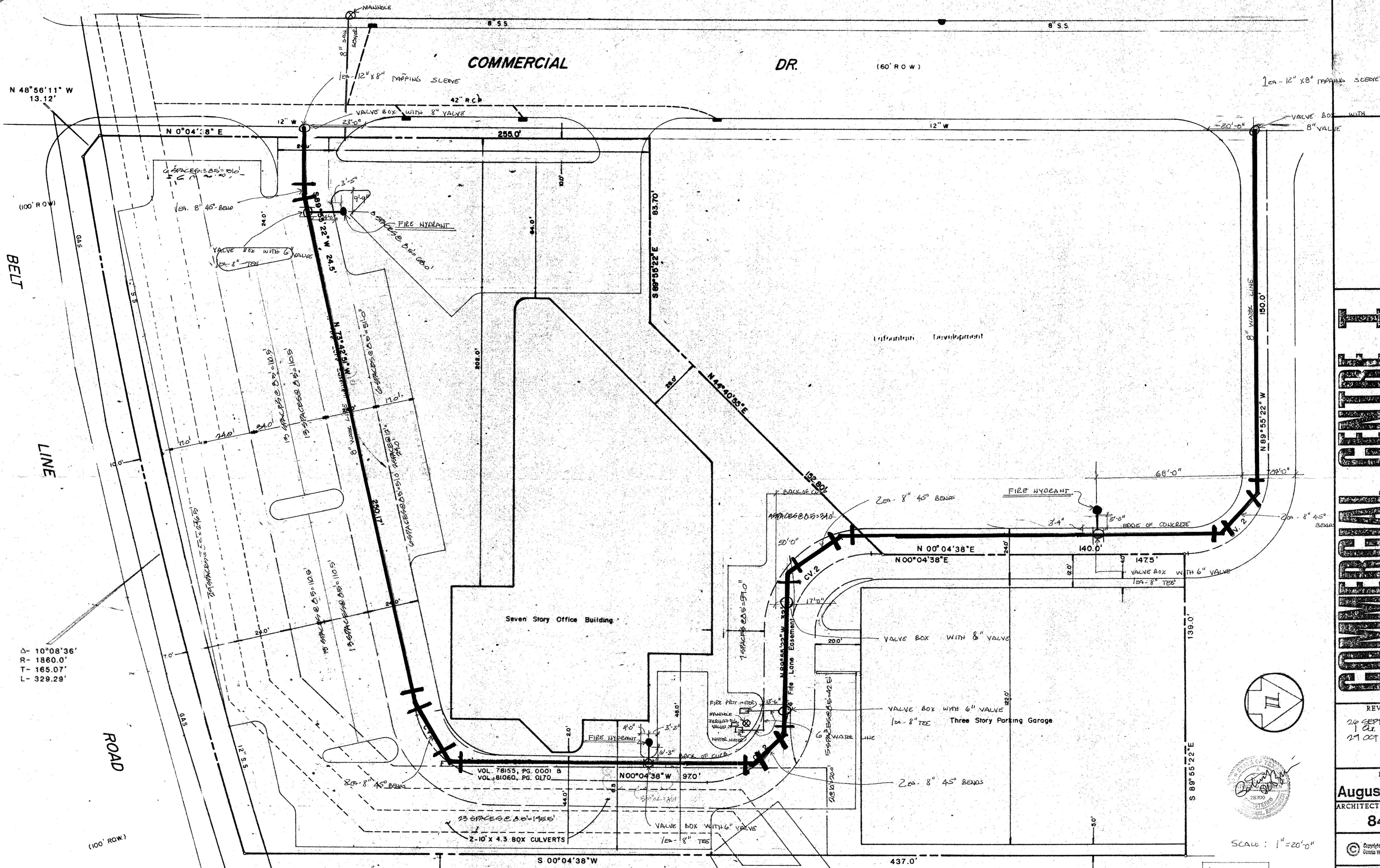
8406

Copyright 1984 All rights reserved.
Penna W. Stacy, A.S.A., Architect

SHEET NUMBER

2.6

STACY ARCHITECTS / DENNIS W. STACY, A.S.A.
2140 DALLAS PARKWAY SUITE 105
DALLAS, TEXAS 75229 214-733-1111



N 48°56'11" W
13.12'

BELT
LINE

Δ - 10°08'36"
R - 1860.0'
T - 165.07'
L - 329.29'

ROAD

COMMERCIAL DR. (60' R.O.W.)

Seven Story Office Building

Three Story Parking Garage

DIMENSION CONTROL

CV. 1
Δ = 73°36'13"
R = 42.0'
L = 48.84'
T = 28.45'

CV. 2
Δ = 90°
R = 42.0'
L = 59.69'
T = 38.0'

- General Notes:**
1. Do Not Scale Dimensions Control
 2. Refer To Architectural Plans For All Building Dimensions
 3. All Dimensions are to Back of Curb or Face of Building unless otherwise indicated.

MATERIAL LIST

| | |
|---------------------------------|------------------------|
| FIRE HYDRANTS = 3 ea. | 8" WATER LINE = 960 LF |
| MANHOLE = 2 ea. | 8" 45° BENDS = 9 ea. |
| TEES = 2 ea. B.M. | 8" TEES = 4 ea. |
| 8" SAW SEWER = 81 LF | 8" VALVES = 2 ea. |
| 12" x 8" TAPPING SLERVE = 2 ea. | VALVE BOXES = 7 ea. |
| ELEV. 584.28 | 6" VALVE = 5 ea. |
| | 6" WATER LINE = 48 LF |

| | | | |
|---------------------|----------------------|------|-----|
| Don A. Tipton, Inc. | Consulting Engineers | FILE | NO. |
| 6330 Belt Line Rd. | Garland, Texas 75043 | DATE | AP |
| PROJECT | SCALE | DATE | AP |
| NO. | DATE | DATE | AP |

COMMERCIAL CENTRAL

3939 BELT LINE ROAD
ADDISON, TEXAS 75001

PROJECT OF
LA FOUNTAIN DEVELOPMENT COMPANY
PLANO, TEXAS 75075

REVISIONS

20 SEPT 1984
1 Oct 1984
21 OCT 1984

DATE
August 1, 1984

ARCHITECTS PROJECT NO.
8406

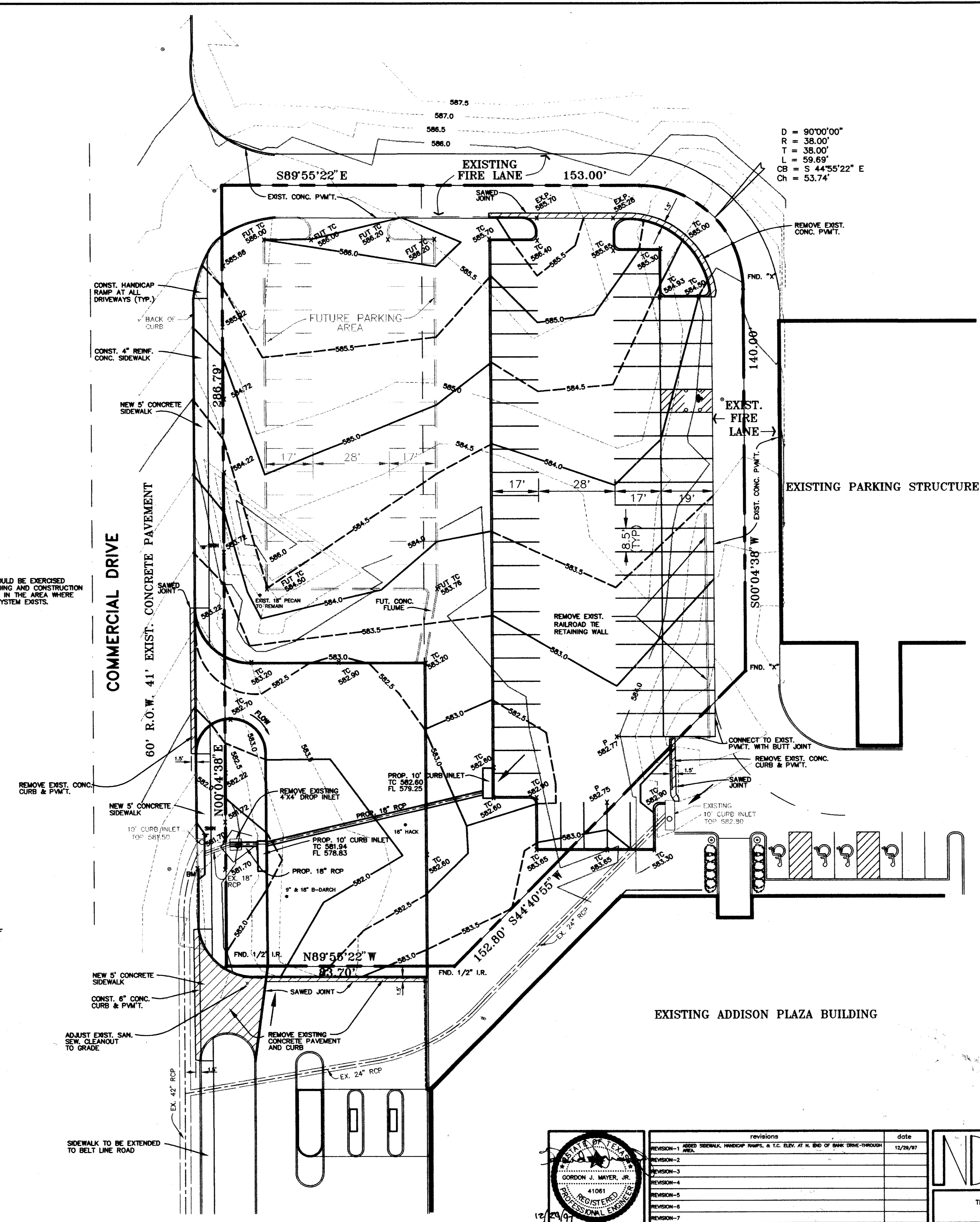
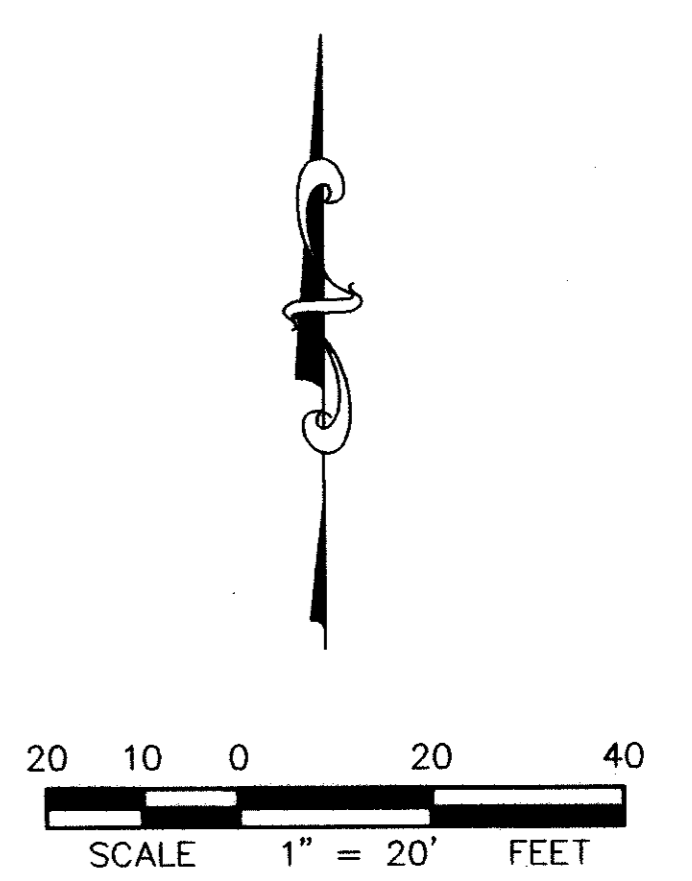
Copyright 1984 All rights reserved.
Curtis W. Stacy, AIA, Architect

SHEET NUMBER
2.6

STACY ARCHITECTS / DENNIS W. STACY, A.I.A.
17440 DALLAS PARKWAY SUITE 105
DALLAS, TEXAS 75252 214-733-1117

83-11

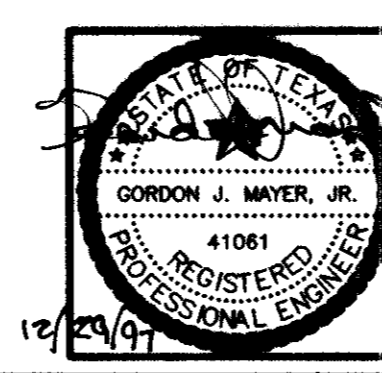
D = 90°00'00"
R = 38.00'
T = 38.00'
L = 59.69'
CB = S 44°55'22" E
Ch = 53.74'



NOTE:
CAUTION SHOULD BE EXERCISED
DURING GRADING AND CONSTRUCTION
OF SIDEWALK IN THE AREA WHERE
SPRINKLER SYSTEM EXISTS.

BM: CUT ON BACK CURB AT S.W. CORNER OF
CURB INLET ON E. SIDE OF COMMERCIAL DR.,
50± N. OF ENTRANCE TO ADDISON BANK,
500± N. OF BELT LINE RD.
ELEV. 581.43

CONSTRUCTION SET
ISSUED BY
TOWN OF ADDISON
PUBLIC WORKS DEPARTMENT
B. G. W. DATE: 4/29/98



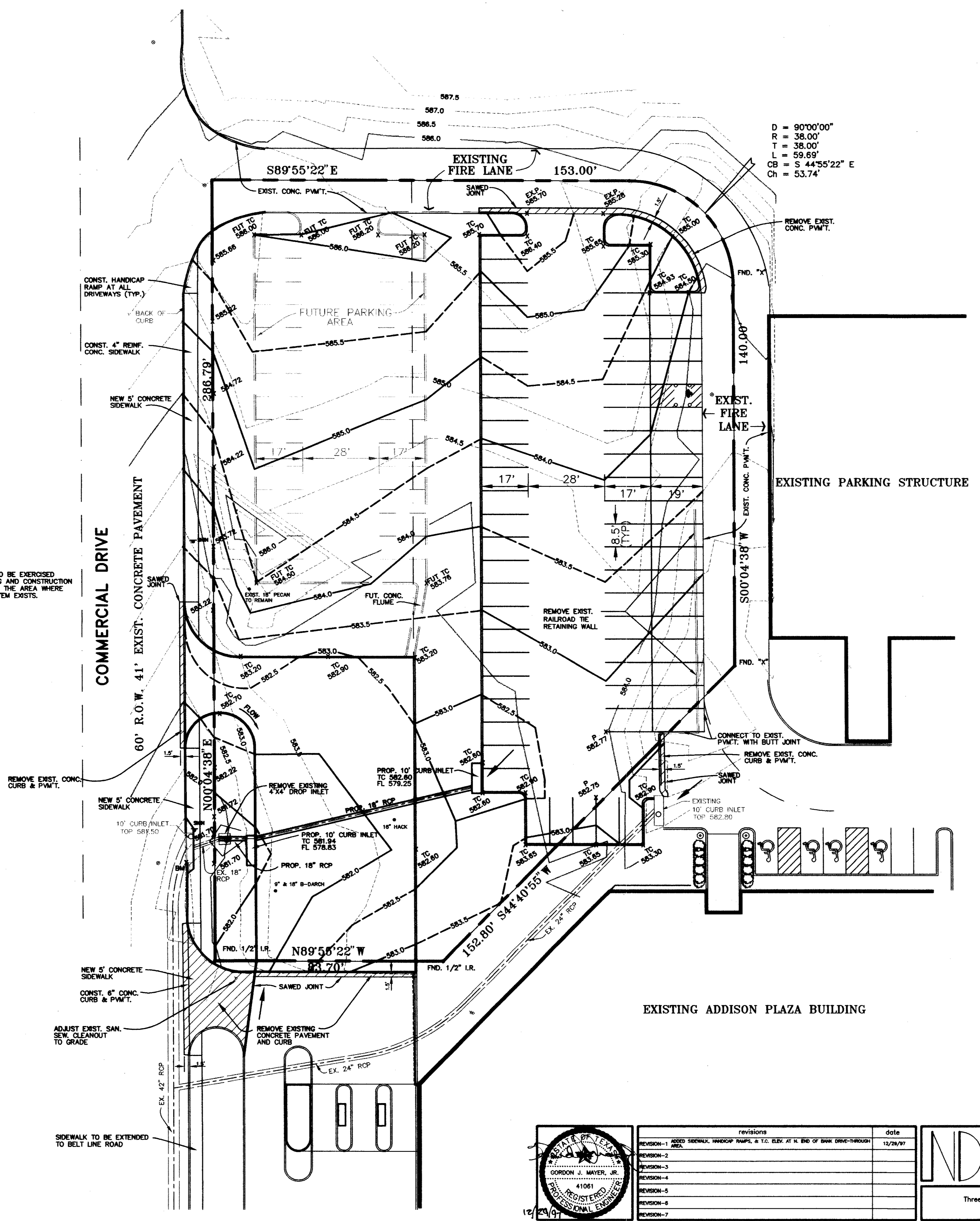
| revisions | date |
|---|----------|
| REVISION-1 ADDED SIDEWALK, HANDICAP RAMPS, & T.C. ELEV. AT R. END OF BANK DRIVE-THROUGH | 12/29/97 |
| REVISION-2 | |
| REVISION-3 | |
| REVISION-4 | |
| REVISION-5 | |
| REVISION-6 | |
| REVISION-7 | |

NDM
NATHAN D. MAIER
CONSULTING ENGINEERS, INC.
Three Northpark / 8800 N. Central Expwy. / Suite 300
Dallas, Texas 75231 / (214) 739-4741

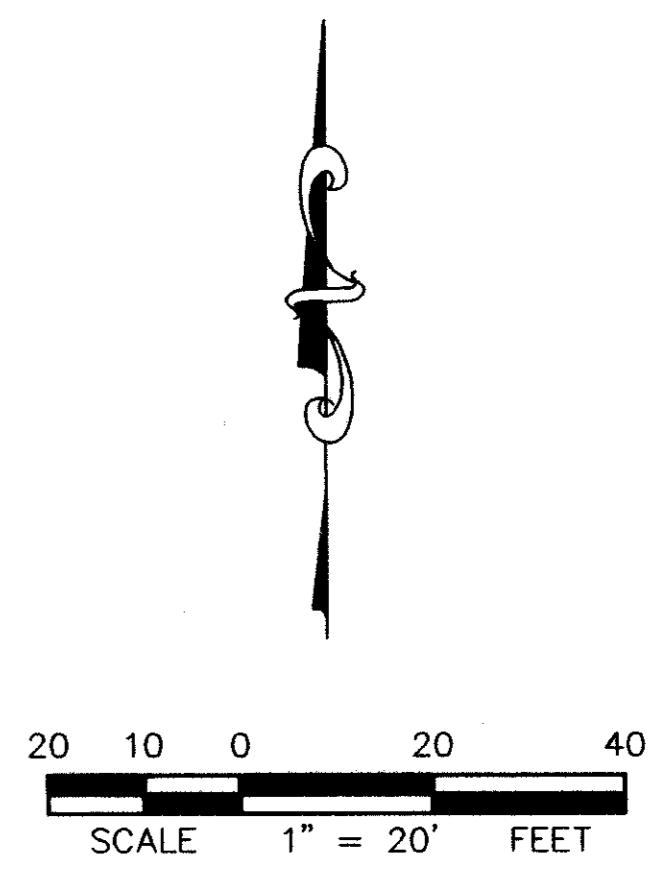
GRADING PLAN
BELT LINE - MARSH BUSINESS PARK
ADDISON PLAZA
ADDISON, TEXAS

| sheet no. | job number |
|-----------|------------|
| 4 8 | 97-02-017 |

GRADE Mon Dec 29 16:46:19 1997 EDP



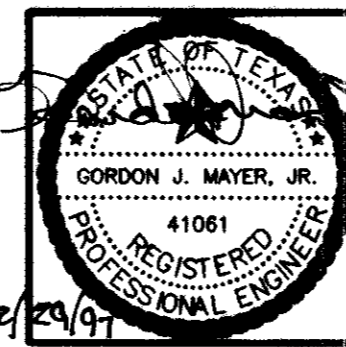
D = 90°00'00"
 R = 38.00'
 T = 38.00'
 L = 59.69'
 CB = S 44°55'22" E
 Ch = 53.74'



NOTE:
 CAUTION SHOULD BE EXERCISED
 DURING GRADING AND CONSTRUCTION
 OF SIDEWALK IN THE AREA WHERE
 SPRINKLER SYSTEM EXISTS.

BM: \square CUT ON BACK CURB AT S.W. CORNER OF
 CURB INLET ON E. SIDE OF COMMERCIAL DR.,
 50'± N. OF ENTRANCE TO ADDISON BANK,
 500'± N. OF BELT LINE RD.
 ELEV. 581.43

CONSTRUCTION SET
 ISSUED BY
 TOWN OF ADDISON
 PUBLIC WORKS DEPARTMENT
 B. Ellis DATE: 6 Jan 98

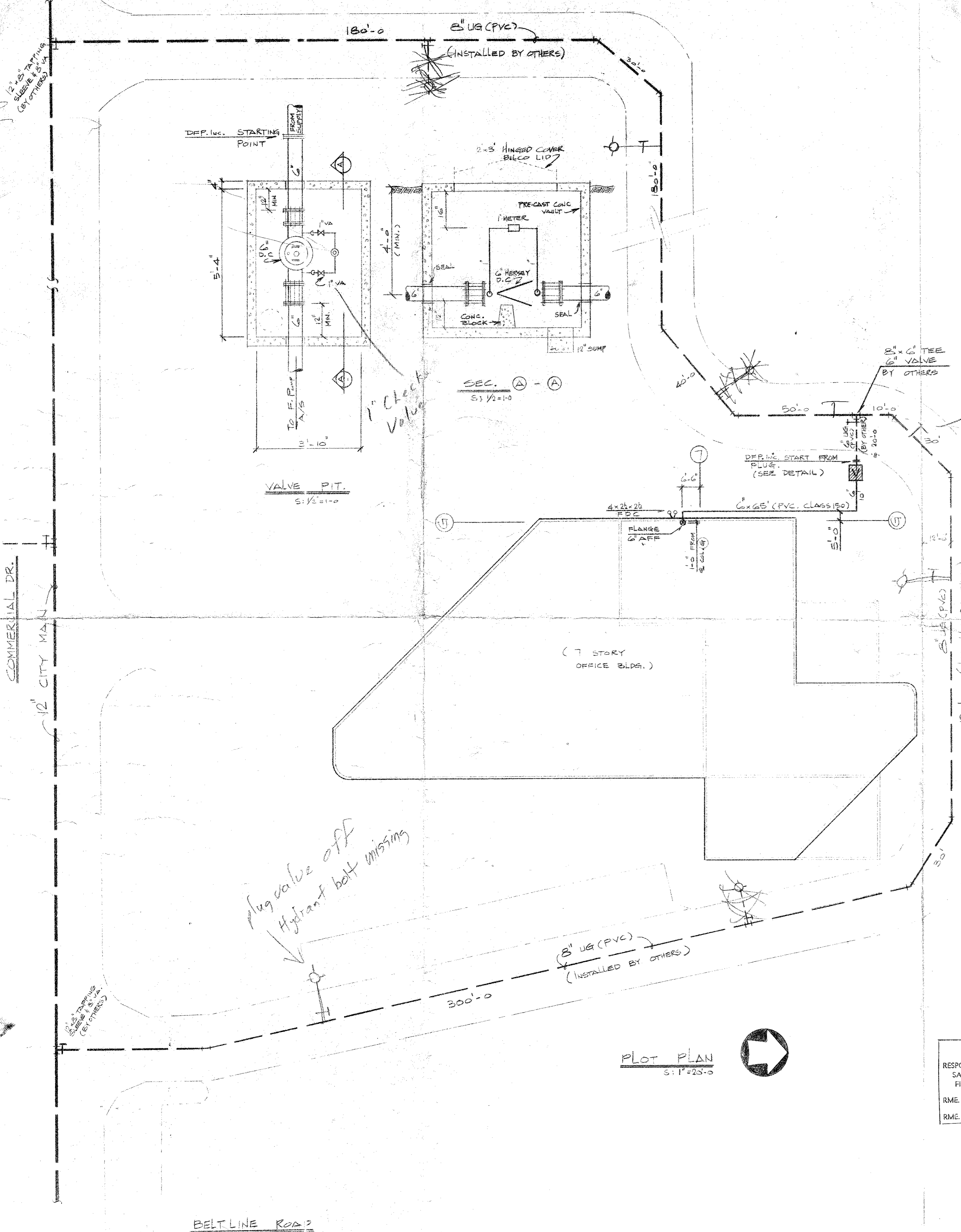


| revisions | date |
|--|----------|
| REVISION-1 ADDED SIDEWALK, HANDICAP RAMPS, & T.C. ELEV. AT N. END OF BANK DRIVE THROUGH AREA | 12/29/97 |
| REVISION-2 | |
| REVISION-3 | |
| REVISION-4 | |
| REVISION-5 | |
| REVISION-6 | |
| REVISION-7 | |

NDM
 NATHAN D. MAIER
 CONSULTING ENGINEERS, INC.
 Three Northpark / 8800 N. Central Expwy. / Suite 300
 Dallas, Texas 75231 / (214) 738-4741

| GRADING PLAN BELT LINE - MARSH BUSINESS PARK ADDISON PLAZA ADDISON, TEXAS | | | | | sheet no. |
|--|-------|--------|------|-------|------------|
| design | drawn | scale | date | notes | job number |
| GJM | SRH | 1"=20' | 4-97 | NDM | 97-02-017 |

4
8



could not locate 1-28-85
 for value RMF
 or main RMF

1-25-85

plug valve off
 Hydrant bolt missing

CITY OF ADDISON
APPROVED

FOR CONSTRUCTION
D. Miller
 BUILDING DEPARTMENT
 1-23-85

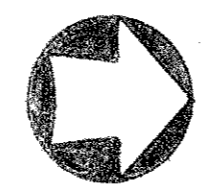
DATE
 NOTE: CONTRACTOR IS HEREBY INSTRUCTED TO EXERCISE CARE IN ALL WORK OR EXCEEDING ALL REQUIREMENTS OF BOTH NATIONAL AND LOCAL CODES AND FOR ORDINANCES APPLICABLE TO HIS WORK. APPROVAL OF THESE DRAWINGS SHALL NOT BE CONSTRUED TO RELIEVE RESPONSIBILITY OR IMPLY VARIANCE TO SUCH CODES.

| Revision | By | Date |
|----------|----|------|
| | | |
| | | |
| | | |
| | | |



TEXAS STATE FIRE MARSHAL
 CERTIFICATE OF REGISTRATION
 RESPONSIBLE MANAGING EMPLOYEE LICENSE
 SALES, INSTALLATION AND SERVICE OF
 FIRE PROTECTION SPRINKLER SYSTEMS
 R.M.E. *Dwight Kim*
 R.M.E. LICENSE NO. 0006

PLOT PLAN
 S: 1"=25'-0"



SYMBOL LEGEND

- Ctg Elev
- Roof Elev
- Pipe - Roof
- Pipe - Fin Flr
- Hydraulic Ref Pt
- WELDED SCR. OUTLET
- GRVD
- GRVD EL. TEE
- GRV. CPLG.
- MED. GROOVE CHG.
- PIPE HANGER

SPRINKLER LEGEND

| sym | orif | temp (F) | quan | description | fin |
|------------------|------|----------|------|--------------|-----|
| ○ | | | | Upright | |
| ⊗ | | | | Conc Pend | |
| ⊙ | | | | Exp Pend | |
| ⊕ | | | | UR on Sprig | |
| ⊘ | | | | Sprig & Drop | |
| ■ | | | | Sidewall | |
| ● | | | | Dry Pend | |
| ○ | | | | | |
| ○ | | | | | |
| ○ | | | | | |
| Total this sheet | | | | | |

dfp Dallas Fire Protection, Inc.
 1433 CRESCENT DR.
 CARROLLTON, TX 75006

COMMERCIAL CENTRE I
 3939 BELT LINE RD.
 ADDISON, TX 75001

contract with:
 ROGERS-ORRICK CONSTRUCTION CO.
 11145 MORRISON LN.
 DALLAS, TX 75229

APP. AUTH: [Signature] Job no: 84-702
 date: 1/17/84

sheet: 1 of 1

scale: AS SHOWN

BELT LINE ROAD