

**CAUTION !!!
EXISTING UTILITIES**

EXISTING PUBLIC AND FRANCHISE UTILITY LINE CROSSINGS IN THIS AREA. CONTRACTOR SHALL EXERCISE EXTREME CAUTION WHILE EXCAVATING AND WORKING IN THIS AREA. EXISTING UTILITY CROSSINGS SHALL BE EXPOSED AND ALIGNMENTS VERIFIED PRIOR TO BEGINNING NEW UTILITY CONSTRUCTION. CONTRACTOR SHALL EMPLOY ANY NECESSARY METHOD OF EXCAVATION, INCLUDING HAND EXCAVATION AND/OR "AIR-VAC", WHICH MAY BE JUSTIFIED TO INSURE NO DAMAGE TO THESE FACILITIES. CONTRACTOR SHALL TAKE ALL AVAILABLE PRECAUTIONS WHILE WORKING IN THIS AREA.

BENCHMARKS

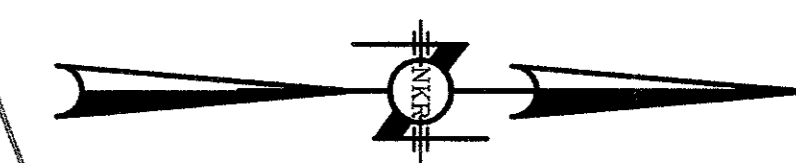
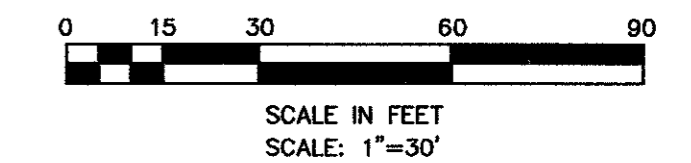
CITY OF ADDISON BENCH MARK NO. 13. SQUARE CUT ON INLET SE CORNER OF BELTLINE & SURVEYOR. ELEVATION 594.94

PARKING SUMMARY

Parking Provided	136 Spaces
ADA Spaces Req'd (2%)	3 Spaces
(See Note #2)	
Total Parking Provided	139 Spaces (3-ADA)

GENERAL NOTES

- REFERENCE SHT C1.0 FOR ADDITIONAL GENERAL NOTES.
- ADA PARKING SPACES REQUIRED BY THE ADDITION OF THIS PARKING LOT SHALL BE PROVIDED BY RE-STRIPING OF THE EXISTING PARKING SPACES WITHIN THE PARKING GARAGE AT BUILDING II (4004).
- BID ALTERNATE NO. 1 - REPLACE 5" REINFORCED CONCRETE PAVEMENT WITH WITH 2" THK TYPE D ASPHALTIC CONCRETE ON 6" THK COMPACTED FLEXBASE (TxDOT ITEM NO. 247). PARKING LOT PERIMETER SHALL HAVE A CONCRETE CURB & GUTTER AS SHOWN ON PLAN AND DETAILS 01 & 02 ON SHT C4.0.

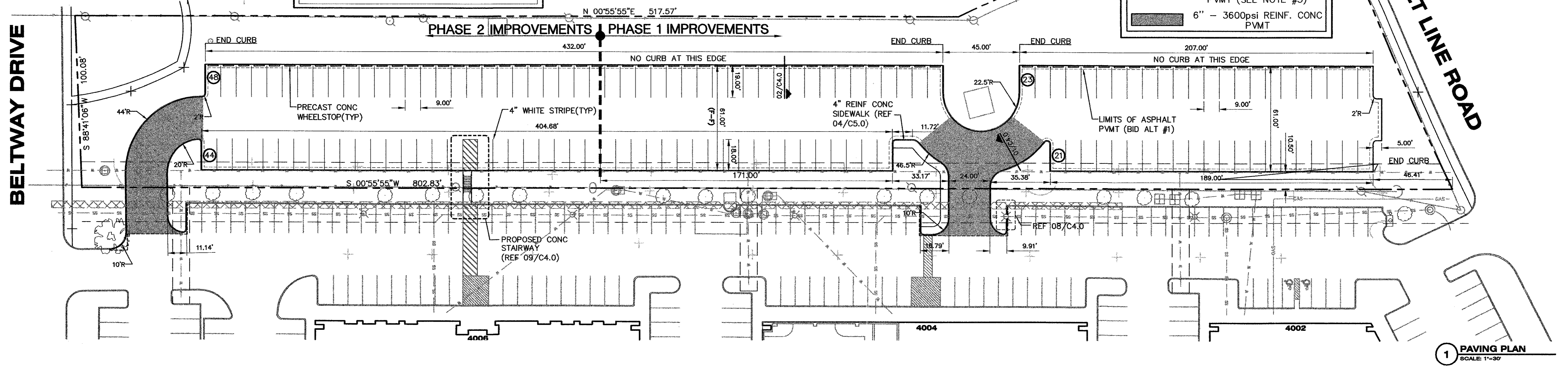


LEGEND

[Symbol]	5" - 3600psi REINF CONC PVMT (SEE NOTE #3)
[Symbol]	6" - 3600psi REINF. CONC PVMT

BELTWAY DRIVE

BELT LINE ROAD



1 PAVING PLAN
SCALE: 1"=30'

GENERAL NOTES

- REFERENCE SHT C1.0 FOR ADDITIONAL GENERAL NOTES.
- PROPOSED PAVEMENT AREA = 41,920 S.F. (0.96 ACRES)
- CURRENT SITE DRAINAGE FLOWS WESTWARD VIA SHEET FLOW. PROPOSED SITE GRADING MAINTAINS THE EXISTING DRAINAGE PATTERNS.

DRAINAGE CALCULATIONS

MODIFIED RATIONAL METHOD: $Q=c*i*A$

AREA = 0.96 ACRES

C(EXIST) = 0.5

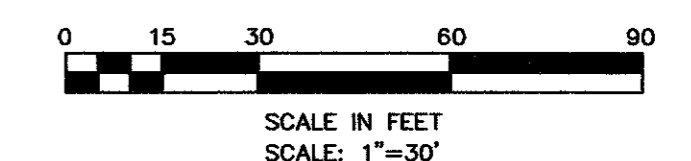
C (PROP) = 0.90

$i_p=8.74$ in./hr.

$T_r=10$ min.

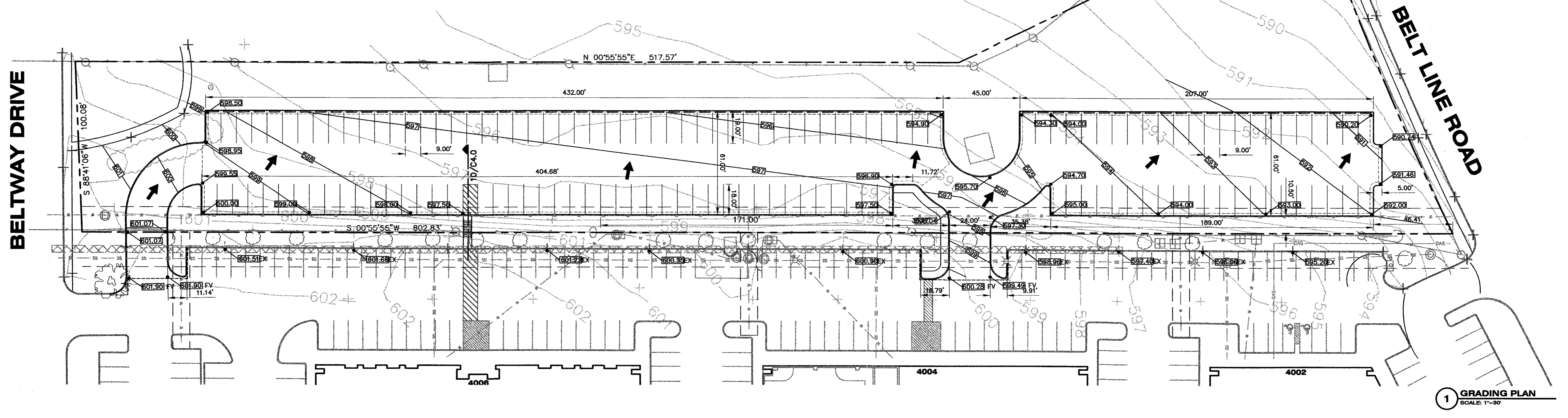
$Q(EXIST) = 4.20$ cfs

$Q(PROP) = 7.56$ cfs.



BELTWAY DRIVE

BELT LINE ROAD

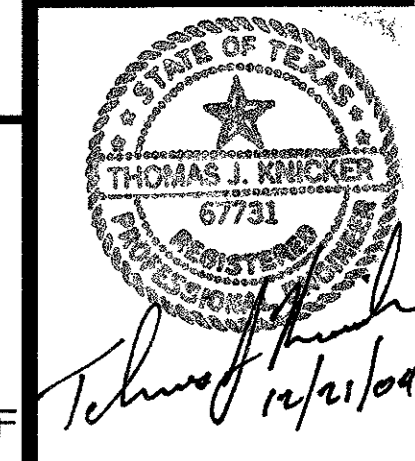


1 GRADING PLAN
SCALE: 1"=30'

REV.	DESCRIPTION	DATE
9-3-04	INC. ADA PARKING/DETAILS	9-3-04
12-21-04	INC. CITY COMMENTS: ADD PHASING	12-21-04

NKR ENGINEERING GROUP, INC.
4004 BELT LINE RD
SUITE 210
ADDISON, TEXAS 75001
PH: 972.818.6305
FAX: 972.818.6306

WEST PARKING LOT IMPROVEMENTS
FOR
WINDSOR MANAGEMENT
4002 BELT LINE ROAD, SUITE 100
ADDISON, TEXAS 75001



BID / PERMIT REVIEW SET
PAVING/GRADING PLAN

Issue Date: 08-20-04
Project No.: 8402
Drawn By: TJK
Reviewed By: TJK
SHEET NUMBER:

C3.0