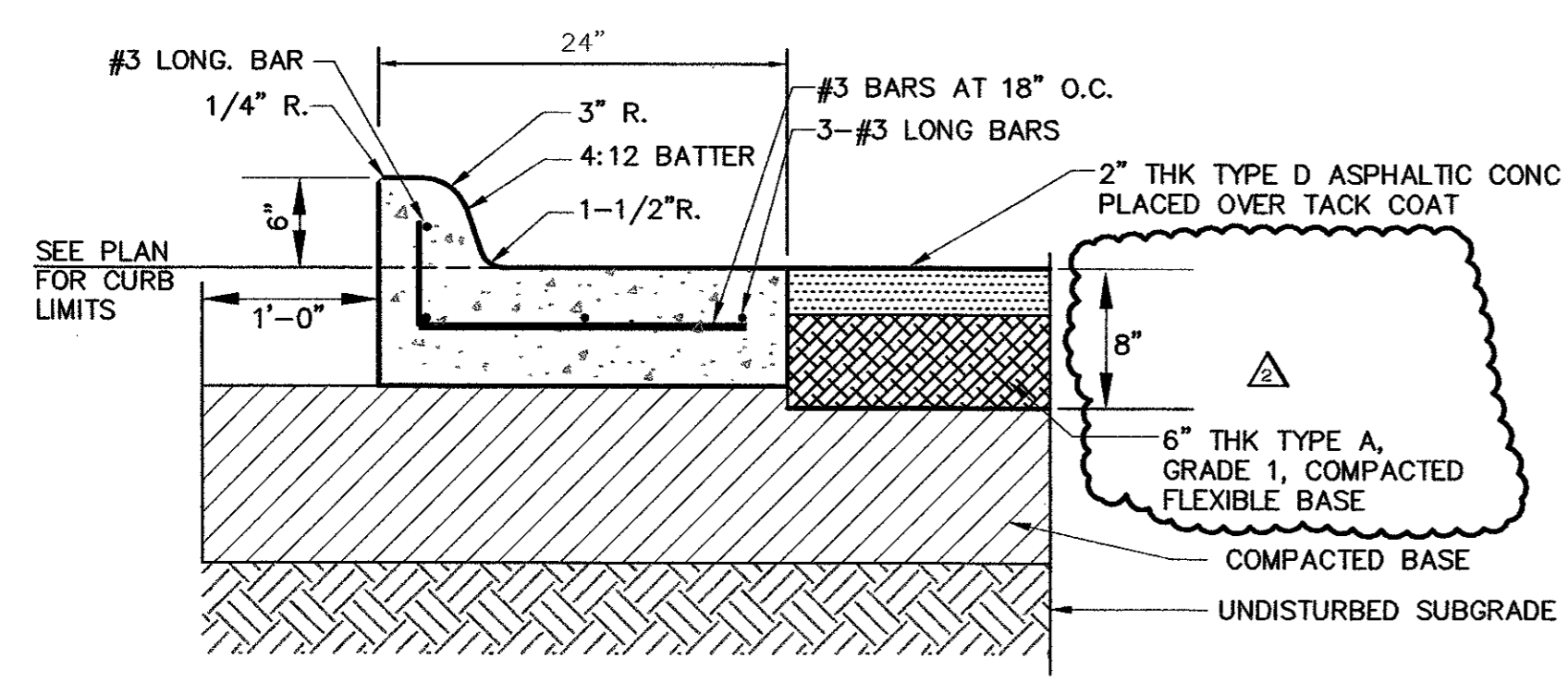


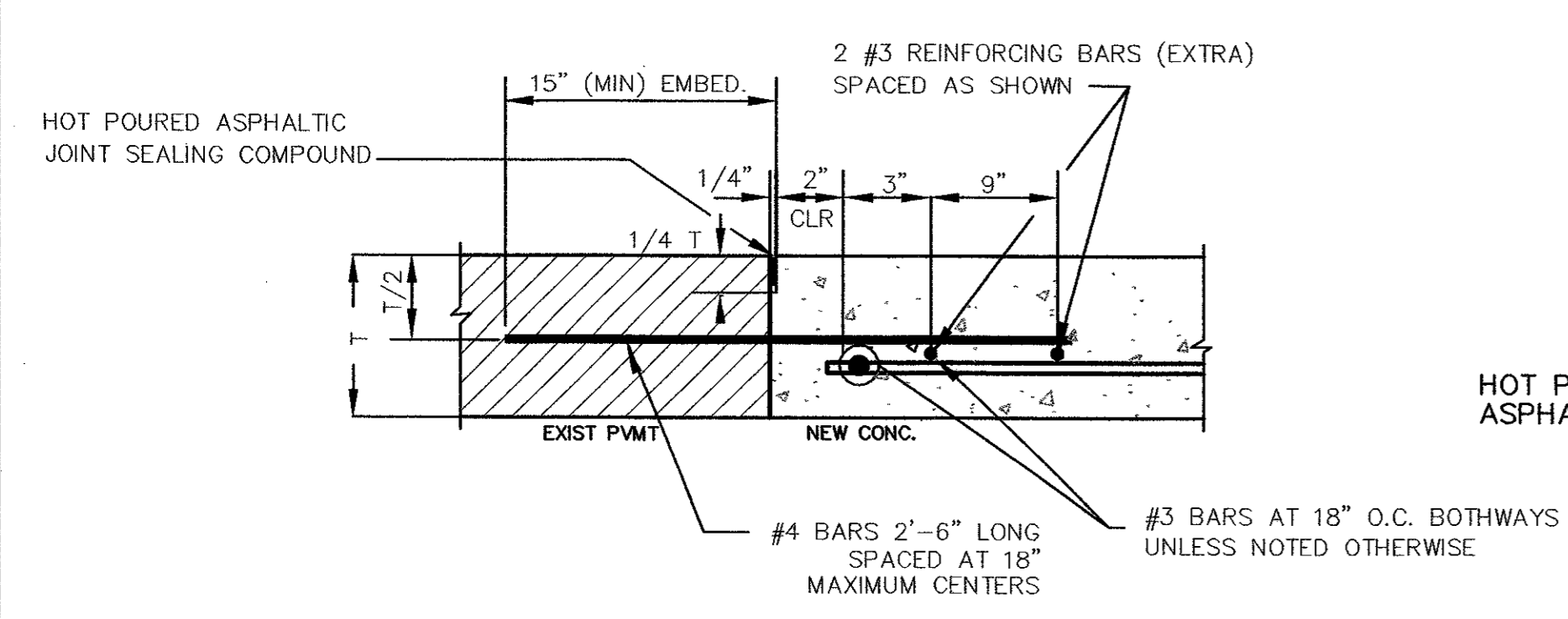
NOTE: BASE BID SHALL CONSIST OF CONCRETE PAVEMENT THROUGHOUT THE PARKING LOT, WITH CONCRETE CURB & GUTTER AS SHOWN ON THE PLAN (SHT C3.0).

01 TYPICAL PAVEMENT SECTION - BASE BID  
NOT TO SCALE

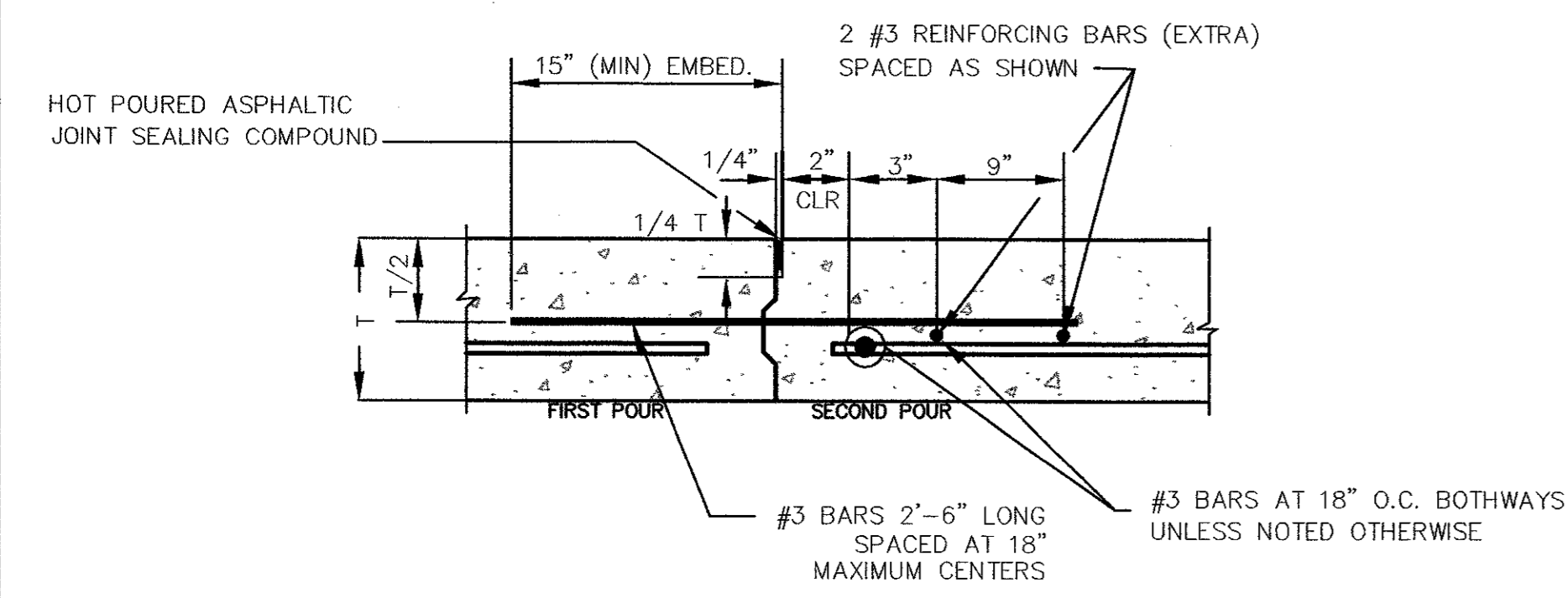


NOTE: ALTERNATE BID #1 SHALL CONSIST OF 2" TYPE D ASPHALTIC CONCRETE OVER 6" COMPACTED FLEXBASE IN LIEU OF THE 5" INCH CONCRETE PAVEMENT. CONCRETE CURB & GUTTER SHALL BE CONSTRUCTED AS SHOWN.

02 TYPICAL PAVEMENT SECTION - ALTERNATE BID #1  
NOT TO SCALE

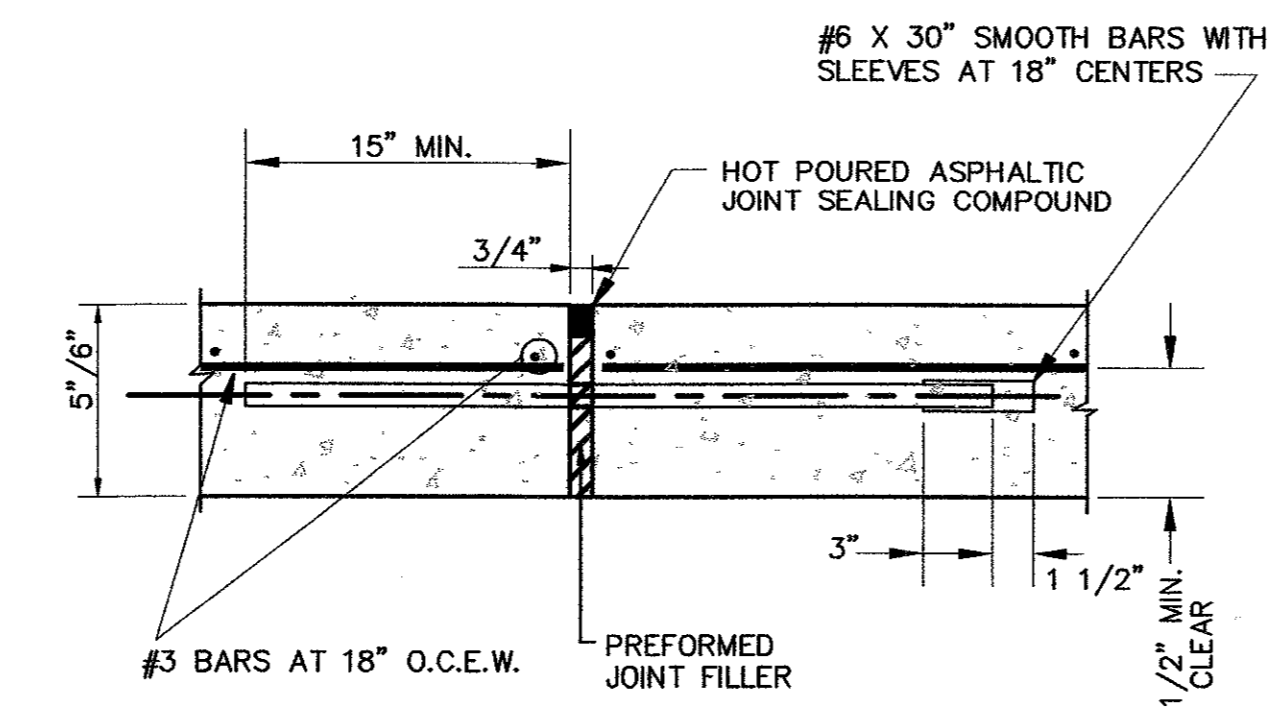


03 DOWELED CONSTRUCTION JOINT  
NOT TO SCALE



WHERE A KEY IS TO BE REQUIRED THE MINIMUM VERTICAL DIMENSION OF THE KEY IS TO BE 1/3 OF THE SLAB THICKNESS (T/3).

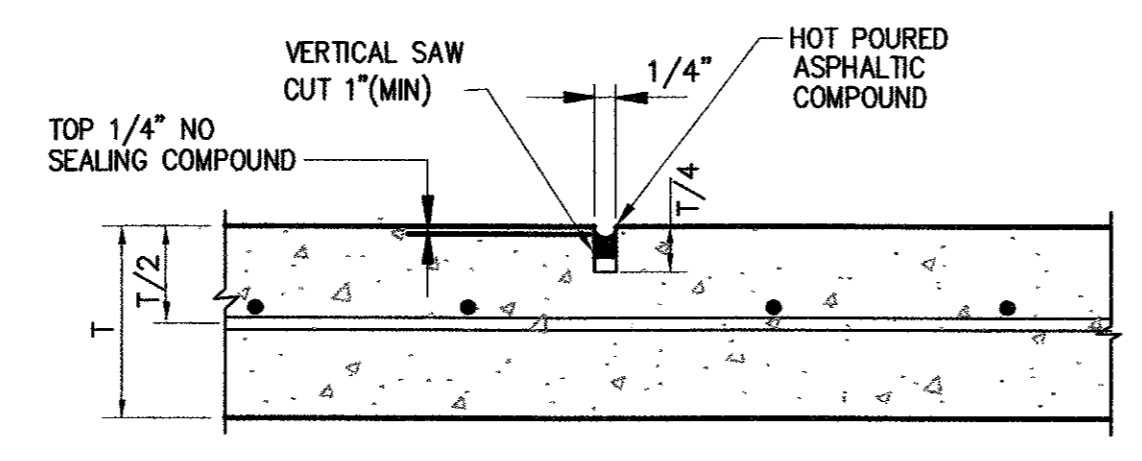
04 CONSTRUCTION JOINT  
NOT TO SCALE



GENERAL NOTES:

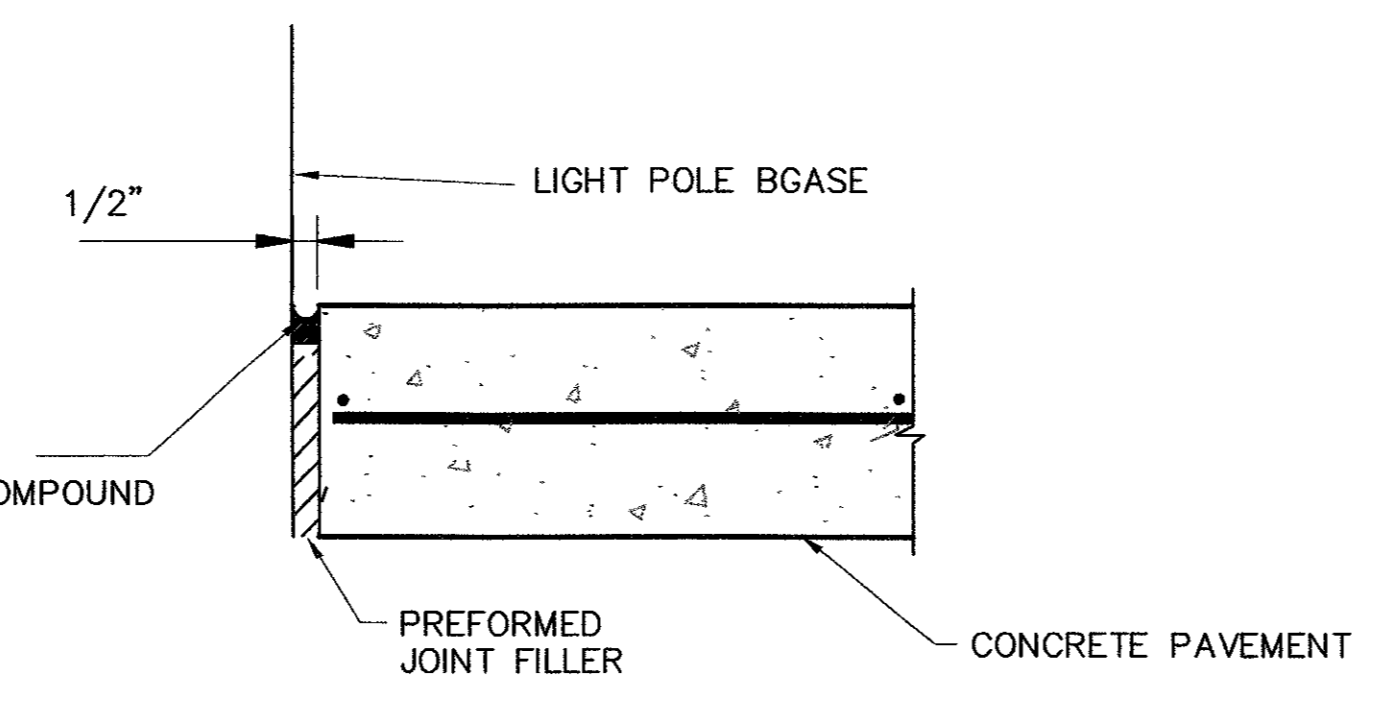
- ALL #4 X 2'-6" BARS ARE TO BE SET IN DRILLED HOLES USING EPOXY GROUT
- ALL REINFORCING BARS SHALL HAVE WIRE TIES AT EVERY INTERSECTION (100% TIE) IN THE MANUFACTURER'S RECOMMEND QUANTITIES.

05 EXPANSION JOINT  
NOT TO SCALE

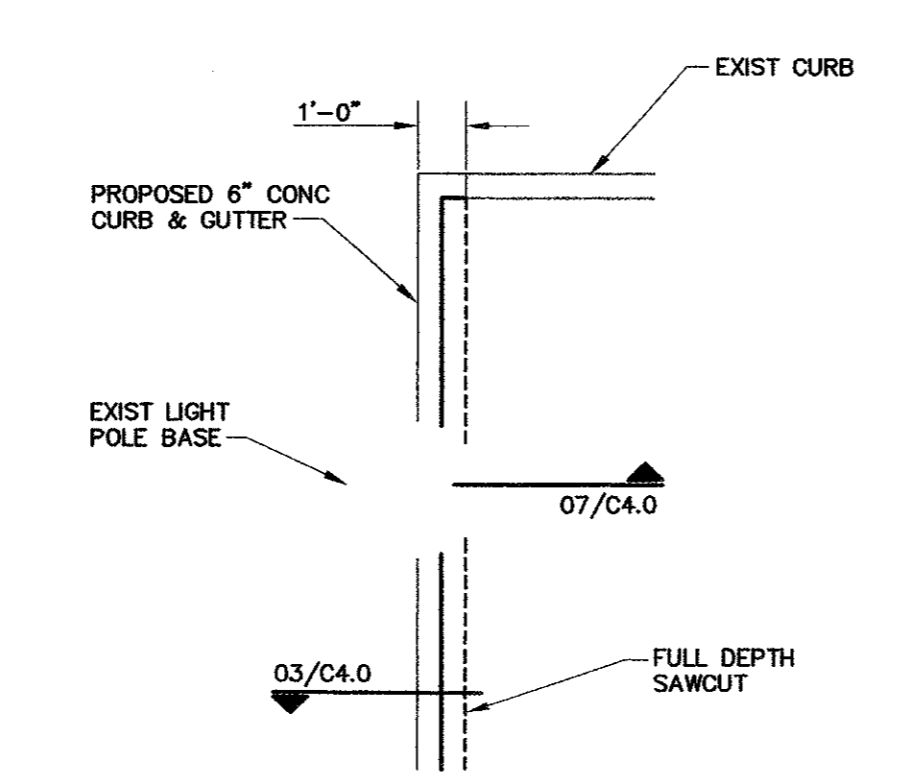


T = PAVEMENT THICKNESS

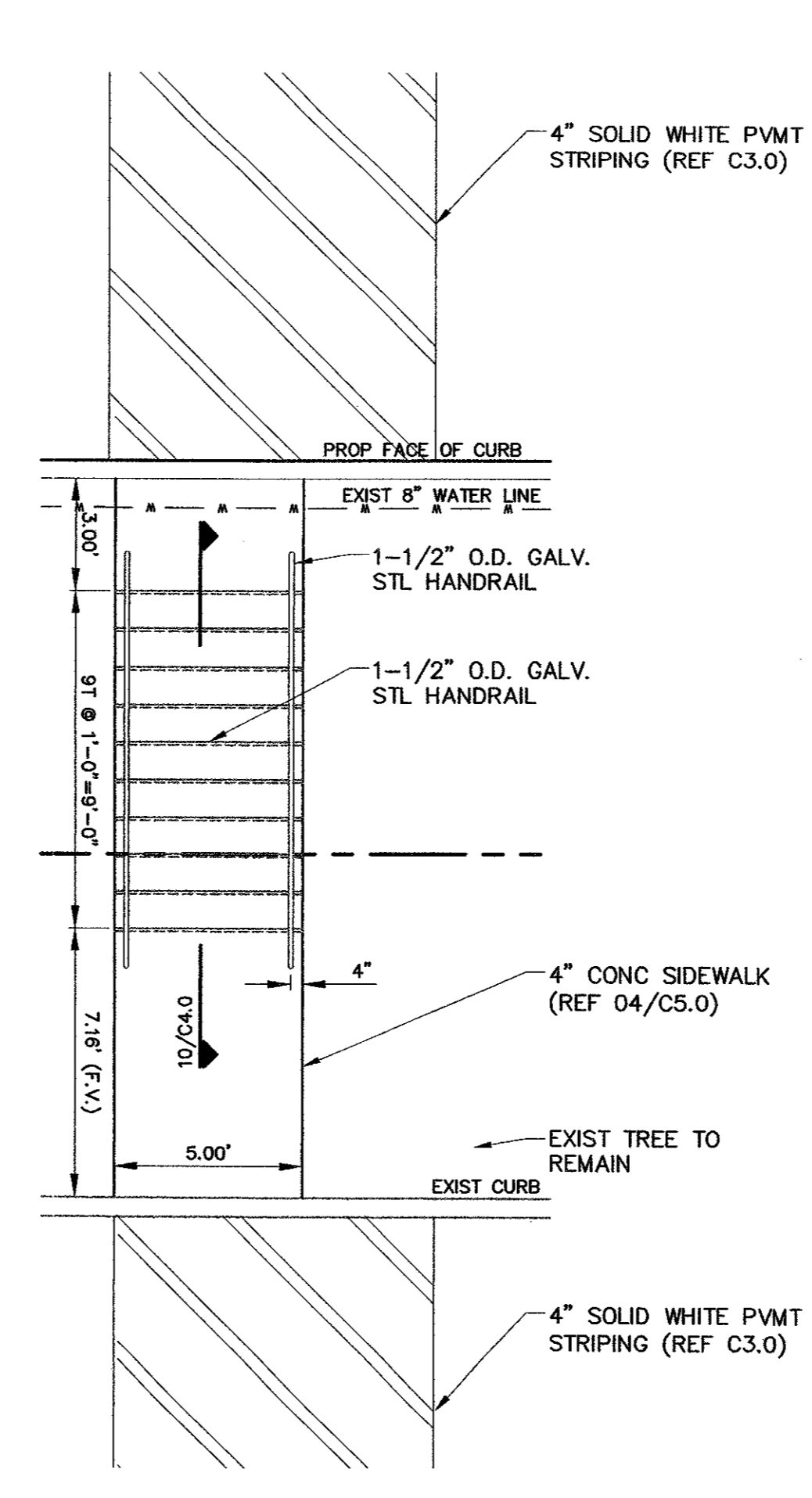
06 SAWED CONTROL JOINT  
NOT TO SCALE



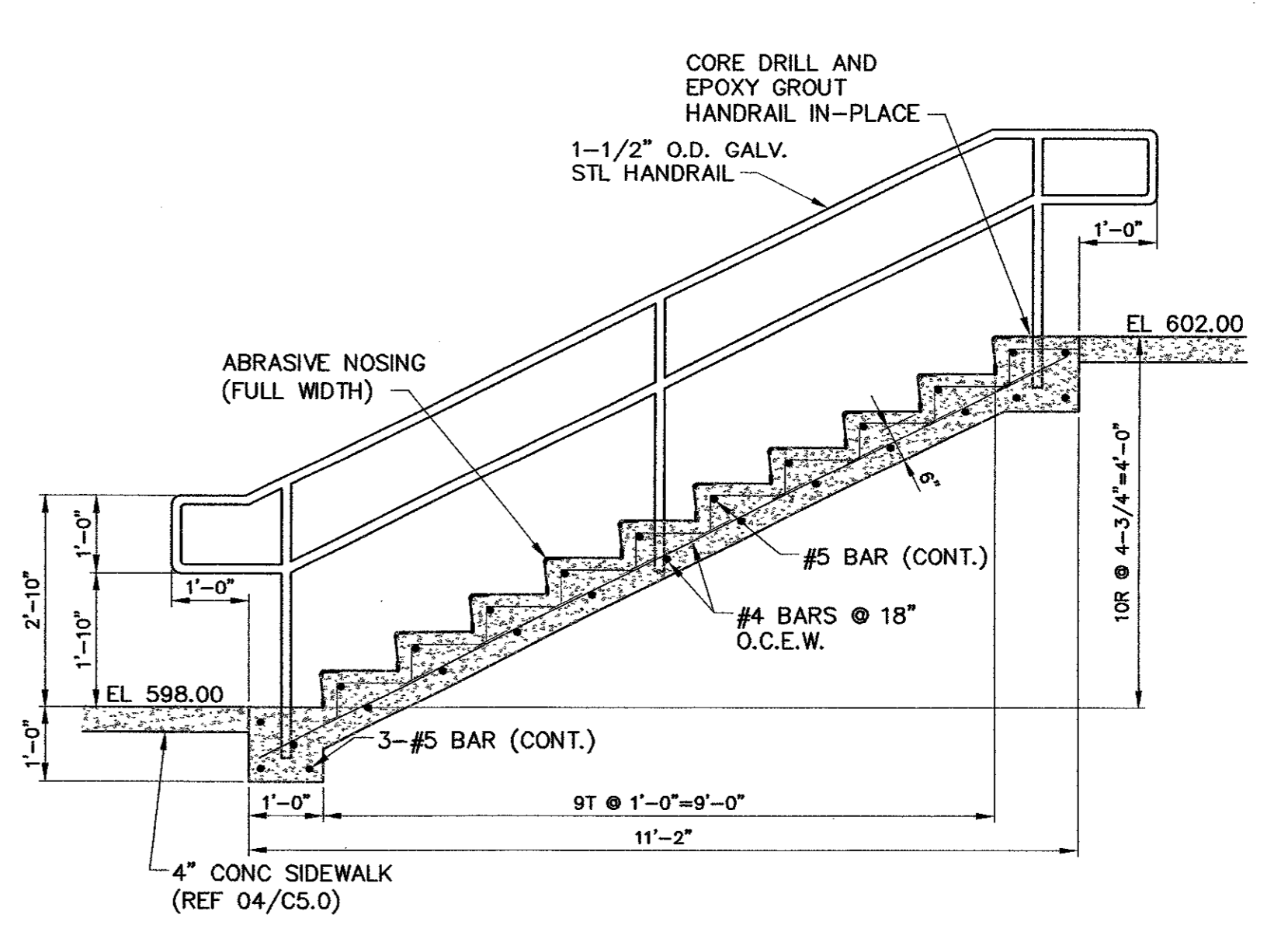
07 ISOLATION JOINT  
NOT TO SCALE



08 ENLARGED PLAN - LIGHT POLE BASE  
SCALE: 3" = 1'-0"



09 ENLARGED PLAN - STEPS  
SCALE: 1/4" = 1'-0"

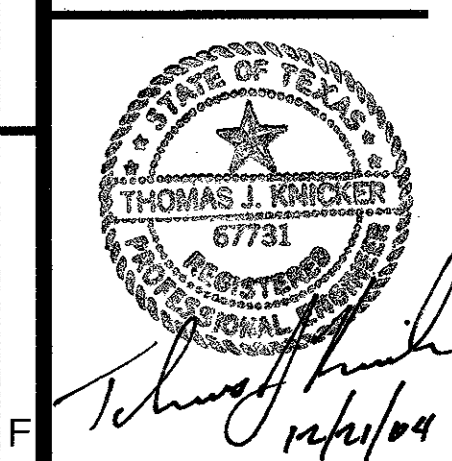


10 SECTION - STAIRS  
SCALE: 1/2" = 1'-0"

REV.	DESCRIPTION	DATE
9-3-04	INC. ADA PARKING/DETAILS	9-3-04
12-21-04	REVISE BID ALT #1 PAVT XSECTN	12-21-04

**NKR ENGINEERING GROUP, INC.**  
4004 BELT LINE RD  
SUITE 210  
ADDISON, TEXAS 75001  
PH: 972.818.6305  
FAX: 972.818.6306

**WEST PARKING LOT IMPROVEMENTS**  
FOR  
WINDSOR MANAGEMENT  
4002 BELT LINE ROAD, SUITE 100  
ADDISON, TEXAS 75001



**BID / PERMIT REVIEW SET DETAILS**

Issue Date: 08-08-04  
Project No.: 8402  
Drawn By: TJK  
Reviewed By: TJK  
SHEET NUMBER:

**C4.0**