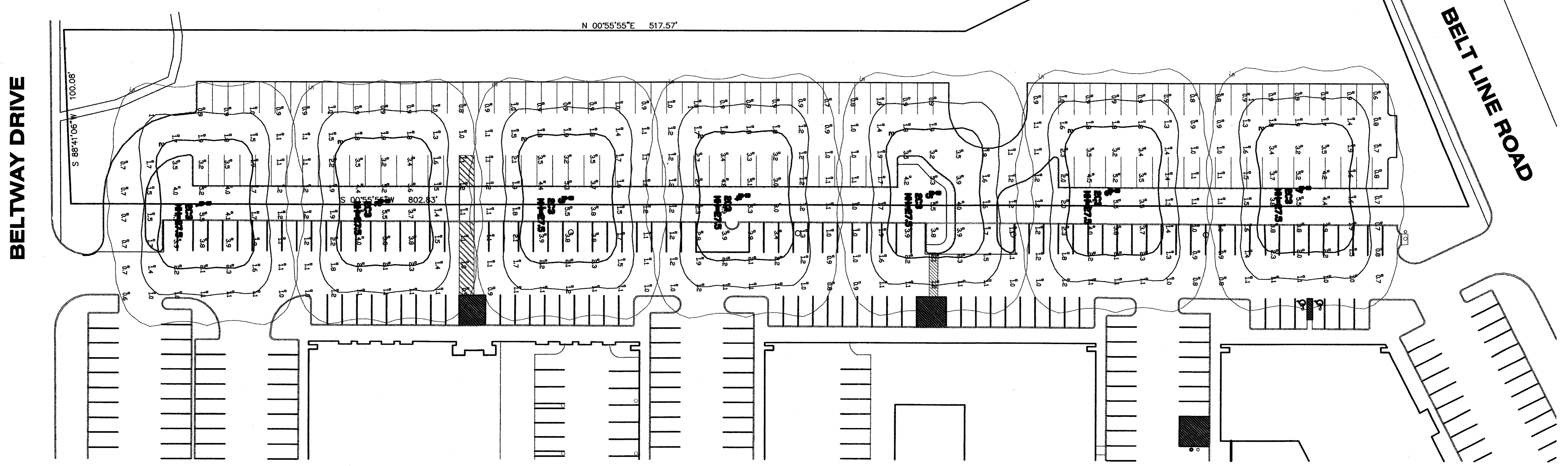


THIS PHOTOMETRIC STUDY HAS BEEN PREPARED BY HOSSLEY LIGHTING FOR REFERENCE PURPOSES ONLY. IT IS NOT INTENDED TO BE USED FOR CONSTRUCTION OR PERMITTING PURPOSES.

Numeric Summary							
Project: MJD OFFICE SITE LIGHTING LAYOUT HLA#24-0409A2							
Label	CalcType	Units	Avg	Max	Min	Avg/Min	Max/Min
AT GRADE	Illuminance	Fc	1.93	5.5	0.6	3.22	9.17

Luminaire Schedule							
Project: MJD OFFICE SITE LIGHTING LAYOUT HLA#24-0409A2							
Symbol	Qty	Label	Arrangement	Lumens	LLF	Description	
	7	2C3	BACK-BACK	23000	0.740	KIM LIGHTING CURVILINEAR CUT-OFF 250MH TYPE III CC25x3_250MHxxx_xx	

Luminaire Location Summary						
Project: MJD OFFICE SITE LIGHTING LAYOUT HLA#24-0409A2						
SeqNo	Label	X	Y	Z	Orient	Tilt
1	2C3	4781.45	4382.24	27.5	90	0
2	2C3	4781.45	4485.01	27.5	90	0
3	2C3	4781.45	4590.52	27.5	90	0
4	2C3	4781.45	4691.92	27.5	90	0
5	2C3	4781.45	4801.54	27.5	90	0
6	2C3	4781.45	4904.31	27.5	90	0
7	2C3	4781.45	5013.94	27.5	90	0



1 SITE PLAN
SCALE: 1"=30'

WEST PARKING LOT IMPROVEMENTS
FOR
WINDSOR MANAGEMENT
4002 BELT LINE ROAD, SUITE 100
ADDISON, TEXAS 75001

PERMIT
REVIEW SET
PHOTOMETRIC
STUDY
Issue Date: 08-20-04
Project No.:
Drawn By:
Reviewed By:
SHEET NUMBER:

R1.0