

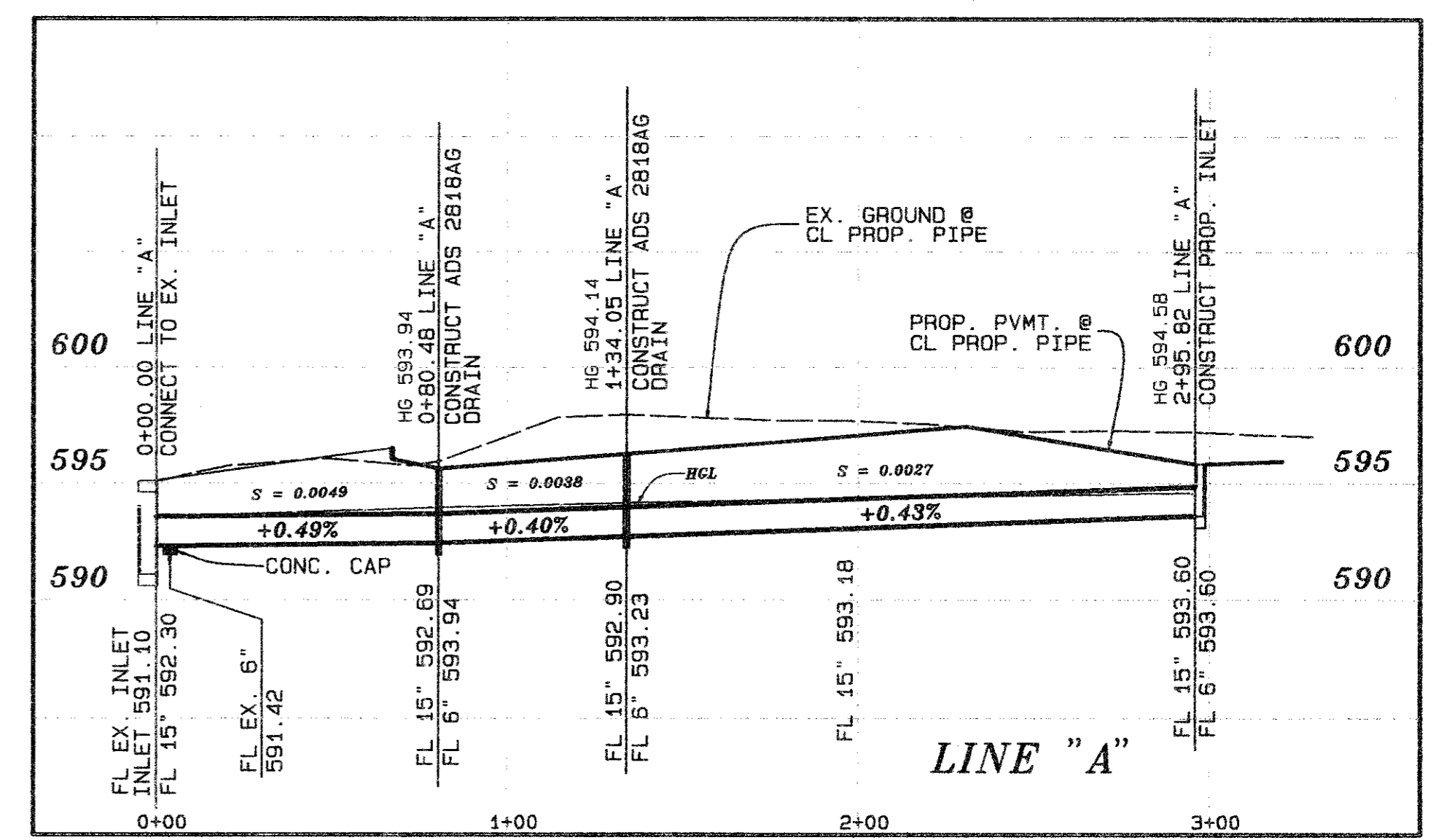
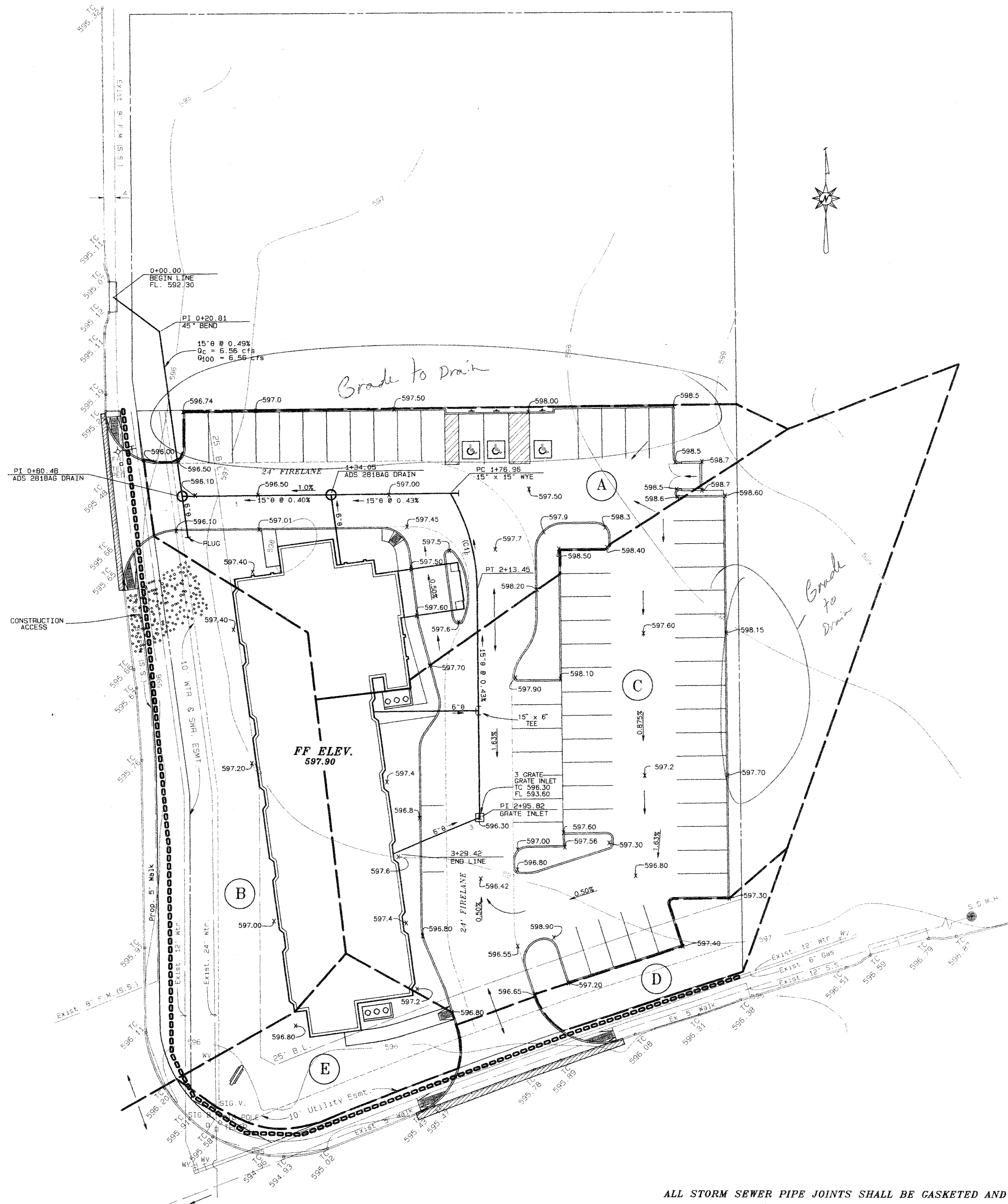
REVISION	DATE	DESCRIPTION	DRAWN BY	CHECKED BY

### DRAINAGE CALCULATIONS

AREA NO.	ACRES	TC	I 100	C	Q100	INLET BY-PASS
A	0.31	10	8.74	0.90	2.44	0.76
B	0.19	10	8.74	0.90	1.49	1.49
C	0.62	10	8.74	0.90	4.88	0
D	0.04	10	8.74	0.90	0.31	0.31
E	0.06	10	8.74	0.90	0.47	0.47

FLOW TO INLET TO SURVEYOR IN PIPE = 6.56 CFS

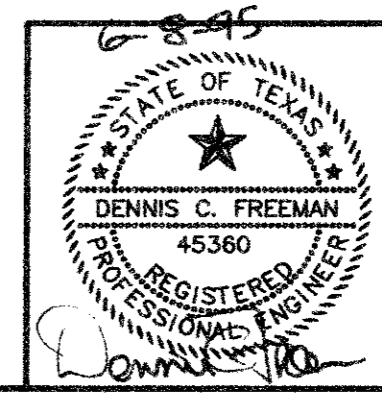
CURVE NO.	DELTA	RADIUS	ARC	CHORD BEARING	CHORD
C1	29°52'01"	70.00	36.49'	S19°22'51"E	36.08'



15" STORM SEWER PROFILE  
 1" = 40' H.  
 1" = 6' H.

- LEGEND:**
- PROPOSED STORM SEWER WITH INLET
  - EXISTING STORM SEWER
  - DRAINAGE AREA DIVIDE
  - PROPOSED FLOW DIRECTION ARROWS
  - DRAINAGE AREA NUMBER
  - INLET NUMBER
  - EROSION CONTROL DEVICE BY GRADING CONTRACTOR MAINTAINED TO PROJECT COMPLETION SILT FENCE OR HAY BALES

**SITE GRADING & DRAINAGE**  
**SLEEP INN HOTEL**  
**CITY OF ADDISON, TEXAS**



**THE NELSON CORPORATION**  
 PLANNING ENGINEERING SURVEYING  
 5990 SUMMERSIDE DRIVE SUITE 202 DALLAS, TEXAS 75252 (214) 380-2605

DESIGN	DRAWN	DATE	SCALE	FILE	SHEET NO
TNC	TNC	6/08/95	1"=20'	9501800	C-2

ALL STORM SEWER PIPE JOINTS SHALL BE GASKETED AND WATER TIGHT.  
 NOTE: ALL ELEVATIONS ON TOP OF CURB UNLESS OTHERWISE NOTED.