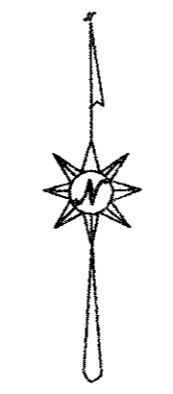
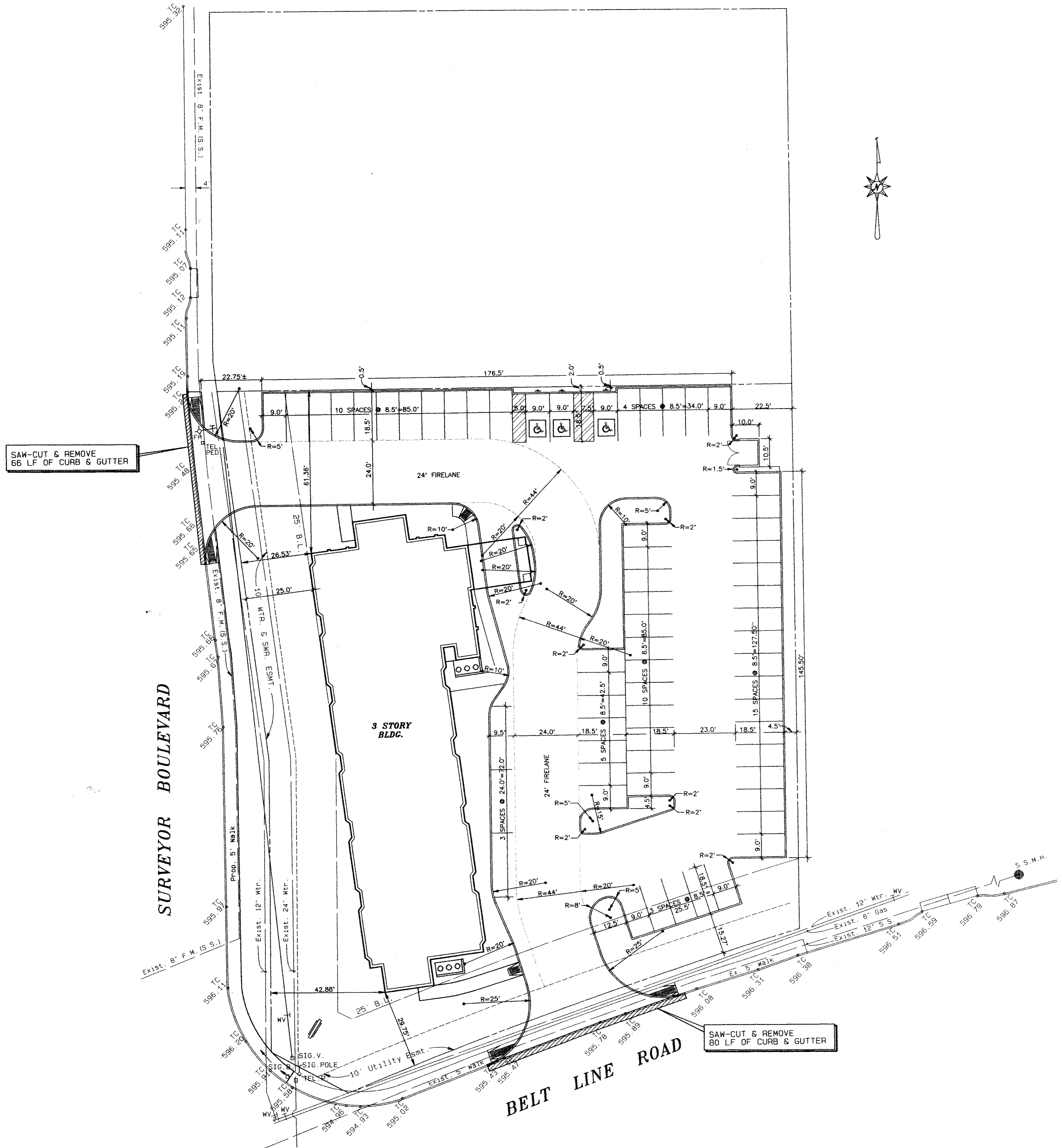


REVISION	DATE	DESCRIPTION	DRAWN BY	CHECKED BY



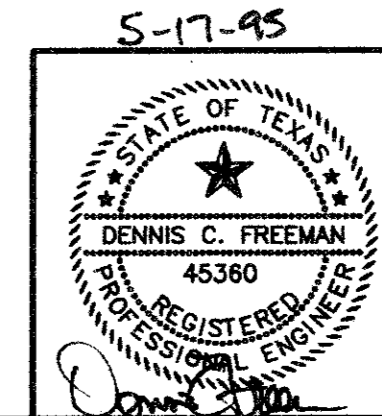
PROJECT SUMMARY			
SITE AREA: 1.10 ACRES (48,139.25 SQ. FT.)			
PARKING PROVIDED:	60	REQUIRED:	60
SURFACE:	60	SURFACE:	60
HANDICAP:	3	HANDICAP:	3
TOTAL:	65		
BUILDING HEIGHT: 3			
IMPERVIOUS AREA			
LANDSCAPE AREA			

SITE NOTES	
STANDARD DOUBLE PARKING	8.5' X 18'
HANDICAP PARKING SPACE	13' X 18' W/ 2' OVERHANG

PAVING & HORIZONTAL CONTROL PLAN

SLEEP INN HOTEL
CITY OF ADDISON, TEXAS

THE NELSON CORPORATION
 PLANNING ENGINEERING SURVEYING
 5909 SUMMERSIDE DRIVE SUITE 202 DALLAS, TEXAS 75262 (214) 380-2605



DESIGN	DRAWN	DATE	SCALE	FILE	SHEET NO
TNC	TNC	05/17/95	1"=20'	9501800	C-3

NOTE: ALL DIMENSIONS TO BACK OF CURB
 NOTE: ALL RADIUS' TO FACE OF CURB