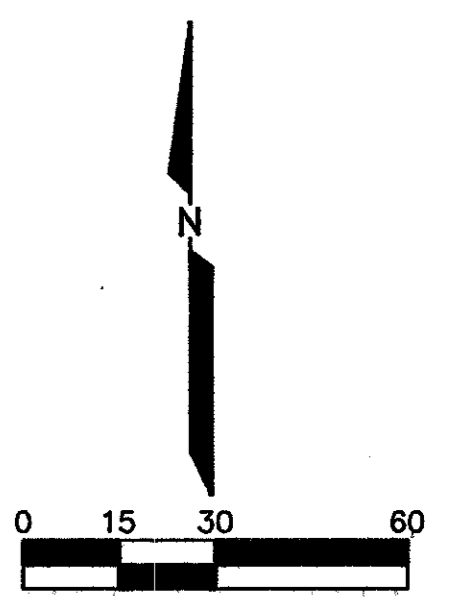
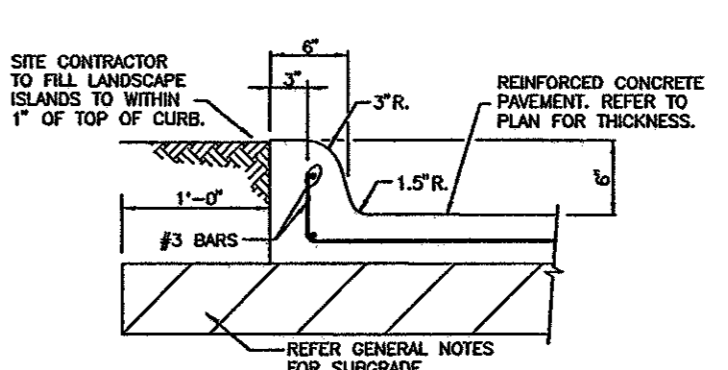


PAVING GENERAL NOTES:

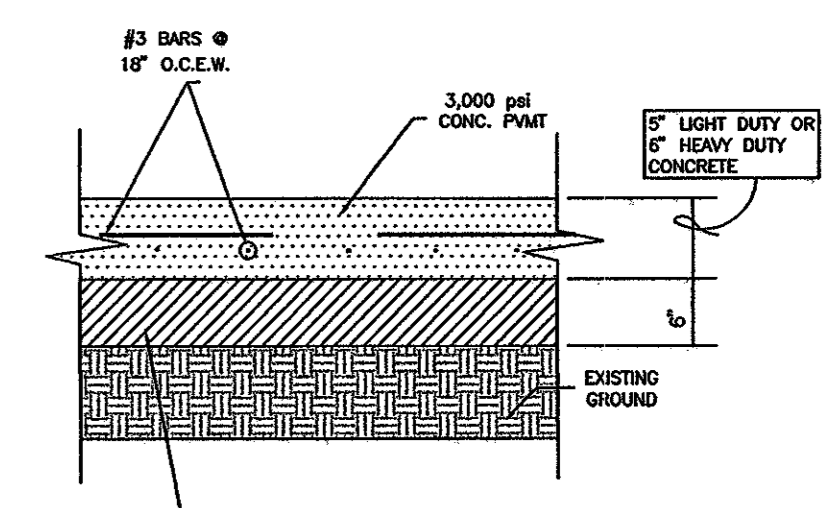
1. ALL ON SITE CONCRETE PAVING SHALL BE OF THE THICKNESS SHOWN ON THE PLAN AT 28 DAYS AND HAVING A ONE INCH (1") TO FOUR INCH (4") SLUMP AND REINFORCED WITH #3 BARS @ 18" O.C.E.W. REINFORCING SHALL BE SUPPORTED BY CHAIRS AND SPACED AT 16 S.F. MAXIMUM INTERVAL.
2. SUBGRADE SHALL BE SCARIFIED TO A DEPTH OF 6" AND UNIFORMLY COMPACTED TO A MINIMUM OF 95 PERCENT (95%) STANDARD PROCTOR AT OR ABOVE OPTIMUM MOISTURE. REFER TO REPORT BY REED ENGINEERING GROUP DATED FEBRUARY 2004, PROJECT NUMBER 10924.
3. SEALANT MATERIAL TO BE 0M44 ASPHALT OR A RUBBER BASED COMPOUND, U.N.O. SPECIFICATIONS TO BE SUBMITTED TO THE ENGINEER PRIOR TO INSTALLATION.
4. BREAKOUTS FOR REMOVAL OF EXISTING PAVEMENT AND CURBS SHALL BE MADE BY FULL DEPTH SAW CUT WHEN ADJACENT TO PROPOSED PAVING AND/OR CURBS.
5. PROPOSED CONCRETE CURBS SHALL MATCH ELEVATIONS OF EXISTING CURB.
6. CONCRETE TO BE BROOM FINISHED AND CURED FOR A MINIMUM OF 72 HOURS.
7. ALL PARKING SPACES SHOWN ON PROPOSED CONSTRUCTION SHALL BE MARKED WITH 4 INCH (4") WIDE YELLOW PAINTED PAVEMENT STRIPING. PAINT SHALL BE SHERWIN WILLIAMS SERIES OR APPROVED ALTERNATE.
8. ALL WORKMANSHIP AND MATERIAL SHALL BE IN ACCORDANCE WITH TOWN OF ADDISON STANDARD SPECIFICATIONS AND/OR SPECIFICATIONS ESTABLISHED BY THIS PROJECT. THE MOST STRINGENT SHALL APPLY.
9. CONTRACTOR SHALL SUBMIT A JOINT SPACING PLAN TO THE ENGINEER PRIOR TO PLACEMENT OF CONCRETE PAVEMENT. CONTROL JOINTS SHALL BE INSTALLED AT A MAXIMUM SPACING OF 12' O.C.E.W. EXPANSION JOINTS SHALL BE INSTALLED AT A MAXIMUM SPACING OF NINETY FEET (90'). CONCRETE SHALL BE PLACED IN STRIPS NOT TO EXCEED 30 FEET (30') IN WIDTH OR PUMPED. LEVEL UP SAND COURSE WILL NOT BE ALLOWED.
10. CONTRACTOR WILL PROVIDE A TWO (2) YEAR UNCONDITIONAL MAINTENANCE FREE WARRANTY ON PORTLAND CEMENT CONCRETE PAVEMENT.
11. ALL ACCESSIBLE RAMPS TO BE CONSTRUCTED PER ADA STANDARDS.
12. ALL FIRE LANES SHALL BE STRIPED IN ACCORDANCE WITH CITY STANDARDS AND SPECIFICATIONS.



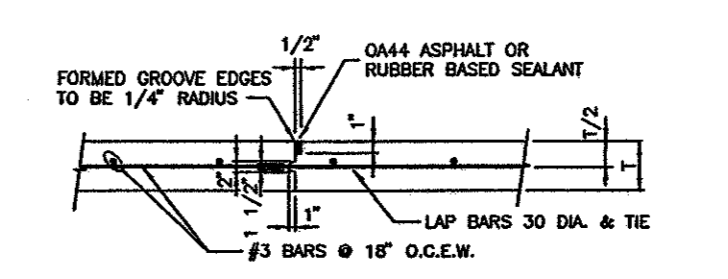
MERCADO, JUANFELIX ADDITION
VOLUME 9872, PAGE 6189
MAP RECORDS OF DALLAS COUNTY, TEXAS



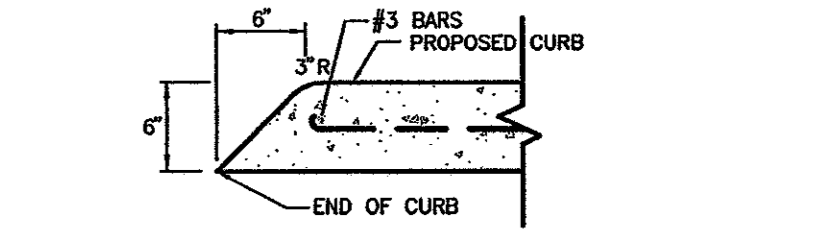
0.1 INTEGRAL CURB DETAIL
N.T.S.



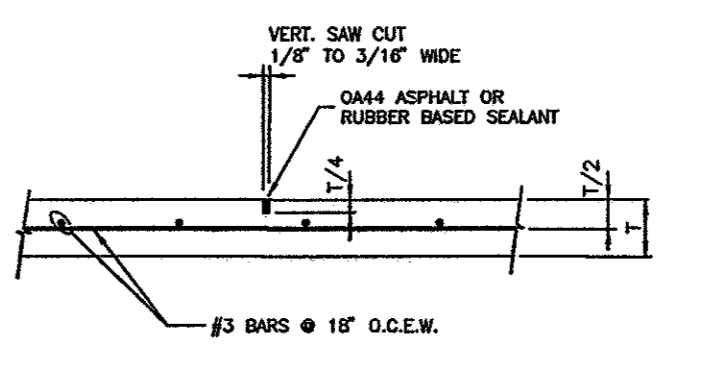
ON SITE LIGHT/HEAVY DUTY CONCRETE PAVEMENT SECTION
N.T.S.



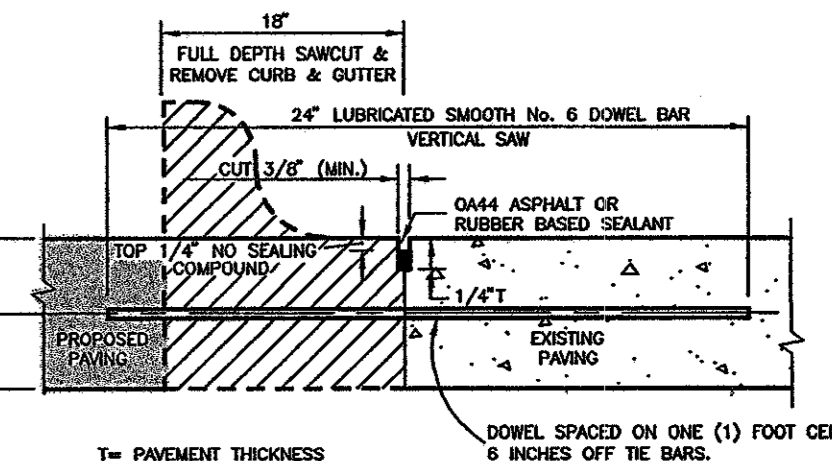
0.2 CONSTRUCTION JOINT
N.T.S.



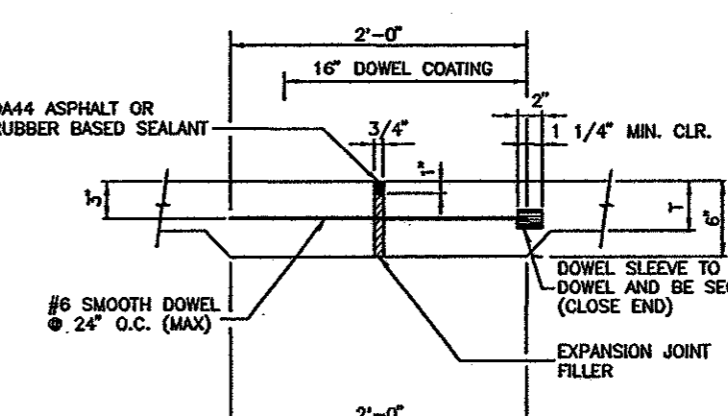
CURB TURN DOWN DETAIL
N.T.S.



0.3 CONTROL JOINT
N.T.S.



0.5 LONGITUDINAL BUTT JOINT
N.T.S.



0.4 EXPANSION JOINT DETAIL
N.T.S.

FULL DEPTH SAWCUT & REMOVE EX. CONC. CURB, CURB INLET & SIDEWALK. DOWEL TO EX. W/ #6 SMOOTH DOWELS @ 18" O.C.E.W. CONST. RIGHT TURN LANE.

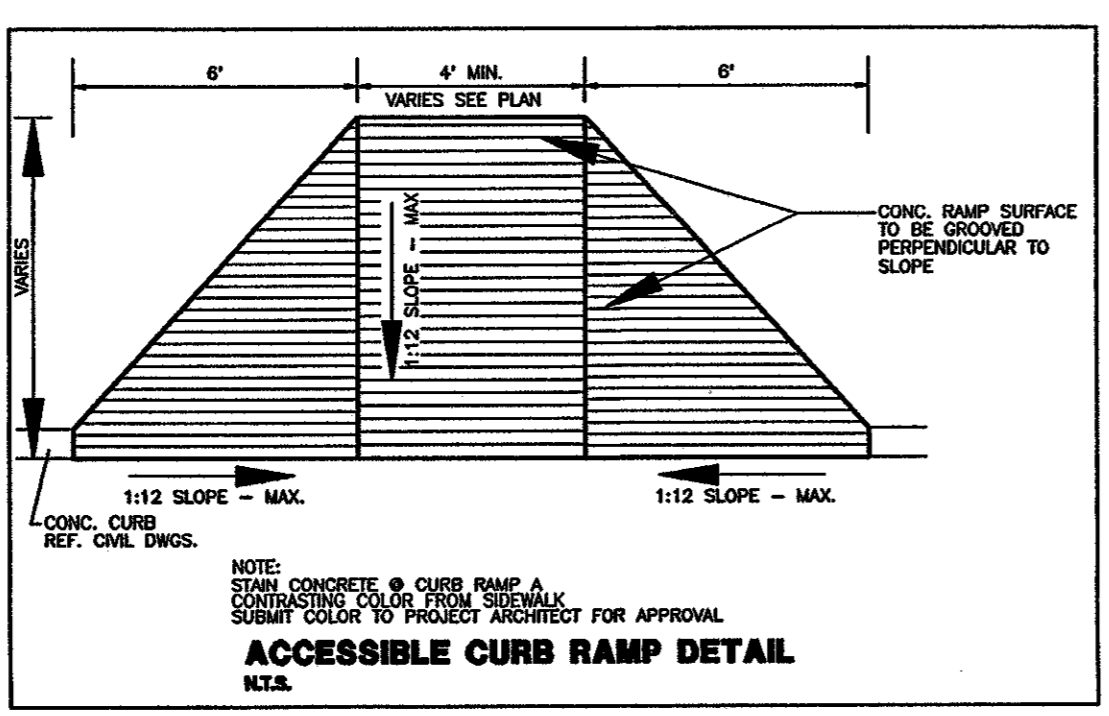
EX. TRAFFIC SIGNAL POLE & BOX TO BE RELOCATED TO BACK OF NEW CURB. REF. SIGNAL PLANS FOR DETAILS.

CONST. BARRIER-FREE RAMPS @ INTERSECTION PER DETAIL THIS SHEET.

FULL DEPTH SAWCUT & REMOVE EX. CONC. CURB, CURB INLET & SIDEWALK. DOWEL TO EX. W/ #6 SMOOTH DOWELS @ 18" O.C.E.W. CONST. RIGHT TURN LANE.

CONST. 5' SIDEWALK ALONG PROPERTY LINE W/ BARRIER FREE RAMPS @ DRIVE APPROACHES PER DETAIL THIS SHEET

CONST. 5' SIDEWALK ALONG PROPERTY LINE W/ BARRIER FREE RAMPS @ DRIVE APPROACHES PER DETAIL THIS SHEET



ACCESSIBLE CURB RAMP DETAIL
N.T.S.

- LEGEND**
- 5" - 3,000 P.S.I. REINFORCED CONCRETE LIGHT DUTY PAVT.
 - 6" - 3,000 P.S.I. REINFORCED CONCRETE HEAVY DUTY PAVT.
 - 8" - 3,600 P.S.I. REINFORCED CONCRETE W/ #4 BARS @ 18" O.C.E.W.
 - FULL DEPTH SAW CUT REMOVE EXIST. CURB

- LEGEND**
- F.H. FIRE HYDRANT
 - CHISELED "X" SET
 - O.F.A. CHISELED "X" FOUND
 - O.F.R. IRON ROD FOUND (SIZE AS NOTED)
 - O.S.R. IRON ROD SET (SIZE AS NOTED)
 - PP OVERHEAD UTILITY POLE W/ GUY
 - U.E. UNDERGROUND ELECTRIC OR TELEPHONE
 - L.P. LIGHT POLE (EX)
 - S.M.H. SANITARY SEWER MANHOLE (EX)
 - S.W.R. SAN. SWR. CLEAN OUT (EX)
 - G.V. GAS VALVE (EX)
 - W.V. WATER VALVE (EX)
 - TREE
 - PROP. COMBINATION GRATE INLET
 - PROP. DROP INLET
 - PROP. CURB INLET
 - PROP. SIGNAGE (H.C.)
 - PAINTED HANDICAP SYMBOL
 - PAINTED STRIPING @ ACCESS ROUTES
 - FIRE LANE

THE SEAL APPEARING ON THIS DOCUMENT WAS AUTHORIZED BY BRYAN M. BURGER, P.E. 90880 ON 5/12/09



REV	DATE	REMARKS
PAVING PLAN		
SOUTHTRUST BANK		
BELT LINE - SURVEYOR VILLAGE ADDITION		
TOWN OF ADDISON, TEXAS		
LAWRENCE A. GATES & ASSOC., LLP 14200 MIDWAY ROAD, SUITE 122 DALLAS, TEXAS		CONSULTING ENGINEERS DALLAS, TEXAS
DESIGN	DRAWN	DATE
BMB	CAC	FEB-04
SCALE	NOTES	FILE
1"=30'	D.P.	24001 PAV
NO.	C-3	