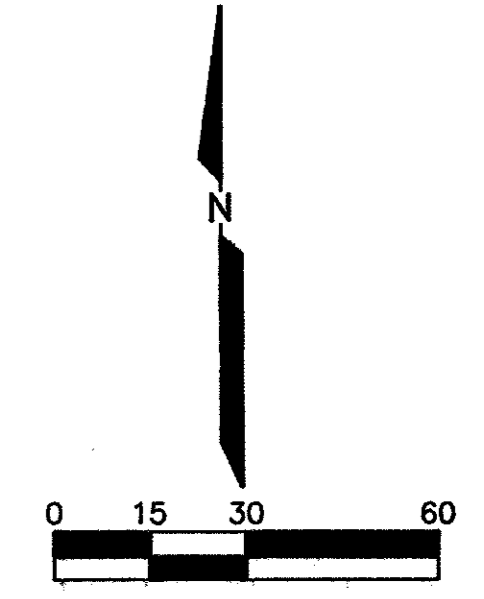


- LEGEND**
- ⊕ F.I. FIRE HYDRANT
 - ⊕ CHISELED "X" SET
 - ⊕ CHISELED "X" FOUND
 - ⊕ I.R. IRON ROD FOUND (SIZE AS NOTED)
 - ⊕ I.R. IRON ROD SET (SIZE AS NOTED)
 - ⊕ O.U.P. OVERHEAD UTILITY POLE W/ GUY
 - ⊕ U.E. UNDERGROUND ELECTRIC OR TELEPHONE
 - ⊕ L.P. LIGHT POLE
 - ⊕ S.S.M. SANITARY SEWER MANHOLE
 - ⊕ S.S.C. SAN. SWR. CLEAN OUT
 - ⊕ G.V. GAS VALVE
 - ⊕ W.V. WATER VALVE
 - ⊕ T. TREE

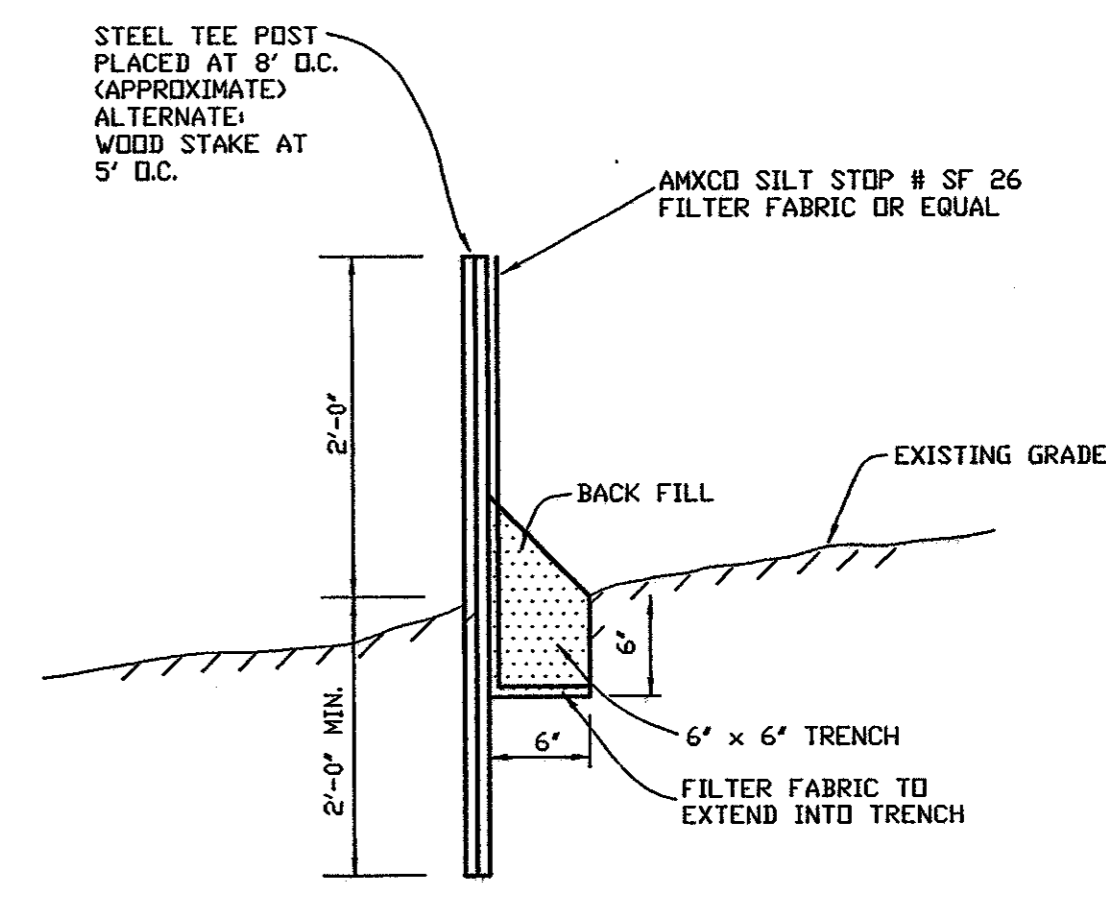


EROSION CONTROL GENERAL NOTES

1. GENERAL CONTRACTOR AND OWNER ARE RESPONSIBLE FOR PREVENTING THE FLOW OR OFF-SITE TRACKING OF SEDIMENT AND OTHER POLLUTANTS TO EXISTING STREETS AND ADJACENT PROPERTIES.
2. ALL POINTS USED AS AN EXIT FROM AREAS OF EXPOSED SOIL MUST HAVE A ROCK STABILIZED CONSTRUCTION ENTRY/EXIT FIFTY FEET (30') IN LENGTH WITH THREE INCH (3") DIAMETER STONE COVER. GENERAL CONTRACTOR IS RESPONSIBLE FOR MAINTAINING ACCESS POINTS AND PREVENTING EXIT AT UNPROTECTED LOCATIONS.
3. IF "SUMP" PUMPS ARE USED TO REMOVE WATER FROM EXCAVATED AREAS, FILTER THE DISCHARGE TO REMOVE SEDIMENT AND OTHER POLLUTANTS BEFORE THE WATER LEAVES THE SITE.
4. PERIMETER EROSION CONTROL MEASURES AND THE ROCK STABILIZED CONSTRUCTION EXIT MUST BE IN PLACED BEFORE STARTING SOIL DISTURBANCE.
5. DISTURBED SOIL MUST BE STABILIZED WITHIN 14 DAYS IN AREAS WHERE GRADING IS TEMPORARILY OR PERMANENTLY STOPPED FOR MORE THAN 21 DAYS.
6. ALL SURFACE AREAS DISTURBED WITHIN OR ADJACENT TO THE CONSTRUCTION LIMITS MUST BE PERMANENTLY STABILIZED. STABILIZATION IS OBTAINED WHEN THE SITE IS COVERED WITH IMPERVIOUS STRUCTURES, PAVING OR A UNIFORM PERENNIAL VEGETATIVE COVER. THE PERENNIAL VEGETATION MUST HAVE A COVERAGE DENSITY OF AT LEAST 70 PERCENT. STABILIZATION IS REQUIRED BEFORE TERMINATING MAINTENANCE AND REMOVAL OF EROSION CONTROL MEASURES.
7. THE GENERAL CONTRACTOR SHALL INSPECT EROSION CONTROL MEASURES AT LEAST ONCE EACH WEEK AND WITHIN 24 HOURS AFTER A STORM EVENT OF 0.5 INCH OR GREATER TO MAINTAIN FUNCTION OF THE CONTROLS. MAINTENANCE IS CRUCIAL TO EROSION CONTROL EFFECTIVENESS. EROSION CONTROL MEASURES THAT PROVE TO BE INEFFECTIVE SHALL BE REPLACED WITH MORE EFFECTIVE MEASURES OR ADDITIONAL MEASURES.
8. FOR DETAILS OF STABILIZATION AND EROSION CONTROL MEASURES, REFER TO THE CONSTRUCTION BEST MANAGEMENT PRACTICES (BMP) MANUAL PUBLISHED BY NORTH CENTRAL TEXAS COUNCIL OF GOVERNMENTS.

CONSTRUCTION SEQUENCE

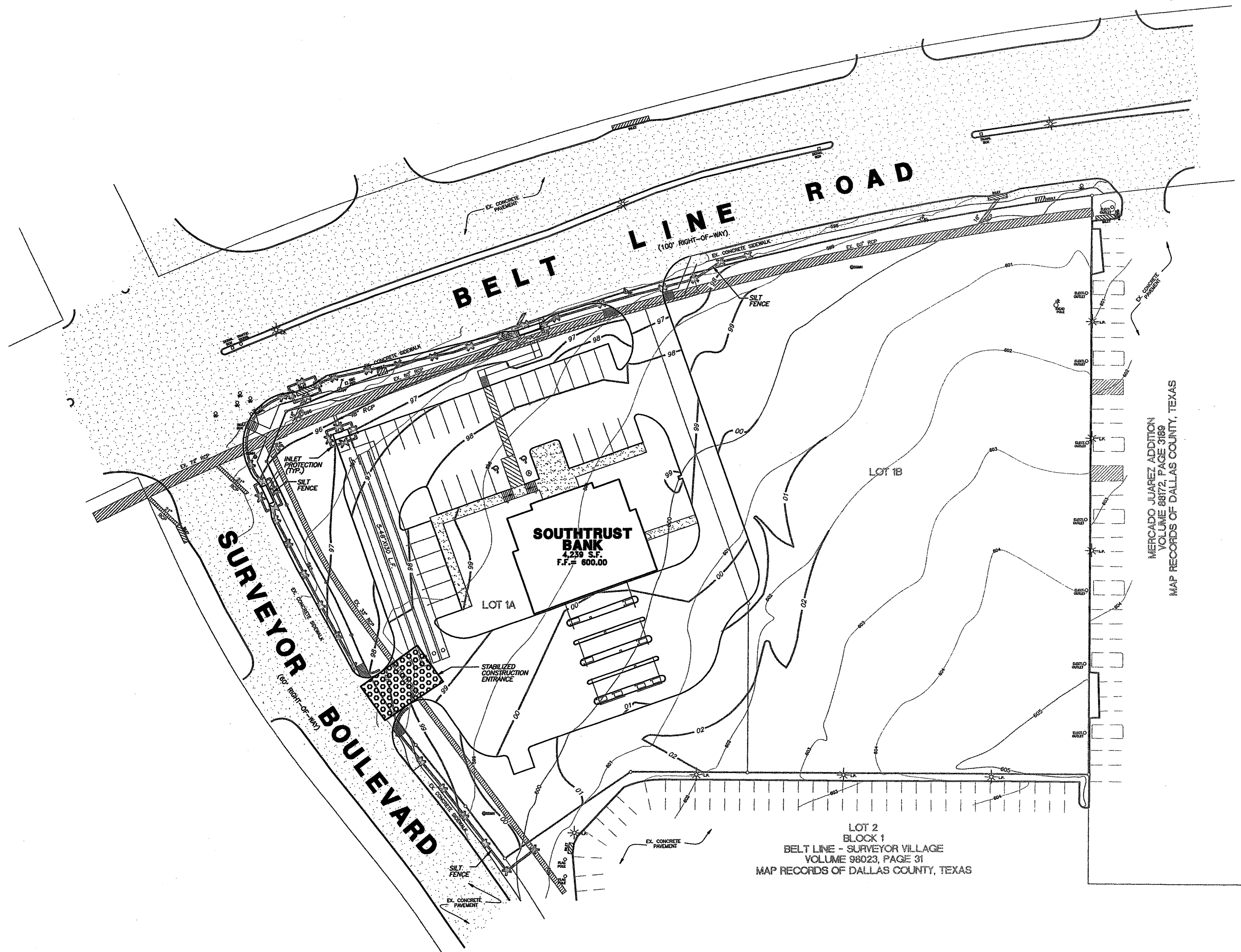
1. OBTAIN GRADING PERMIT.
2. INSTALL ALL EROSION CONTROL MEASURES AND DEVICES THAT CAN BE INSTALLED PRIOR TO SITE CLEARING.
3. CLEAR SITE.
4. INSTALL ANY REMAINING CONTROL MEASURES AND DEVICES THAT COULD NOT BE INSTALLED PRIOR TO SITE CLEARING.
5. GRADE SITE.
6. INSTALL ALL UNDERGROUND UTILITIES. INSTALL EROSION CONTROL AROUND CATCH BASINS AND INLETS.
7. INSTALL PAVEMENT.
8. INSPECT AND MAINTAIN ALL EROSION MEASURES UNTIL ALL DISTURBED OFFSITE & ONSITE AREAS HAVE BEEN HYDROMULCHED OR SODDED (IN ACCORDANCE WITH THE LANDSCAPE PLAN) AND A MOWABLE STAND OF GRASS IS ACHIEVED.



EROSION CONTROL FENCE
N.T.S.



NOTE: CONTRACTOR SHALL MAINTAIN SILT FENCE THROUGHOUT DURATION OF PROJECT.

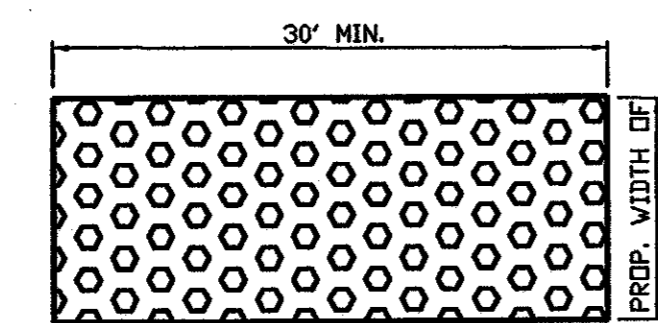


STABILIZED CONSTRUCTION ACCESS

A STABILIZED CONSTRUCTION ACCESS ENTRANCE APPLIES TO POINTS OF CONSTRUCTION INGRESS AND EGRESS WHERE SEDIMENT MAY BE TRACKED OR FLOW OFF OF THE CONSTRUCTION SITE.

A STABILIZED CONSTRUCTION ACCESS ENTRANCE WILL BE INSTALLED AT THE LOCATION SHOWN ON THE PLAN. THIS ENTRANCE SHALL CONSIST OF A FILTER FABRIC COVERED BY A MINIMUM OF 8" OF SUITABLE ROCK OR CRUSHED STONE.

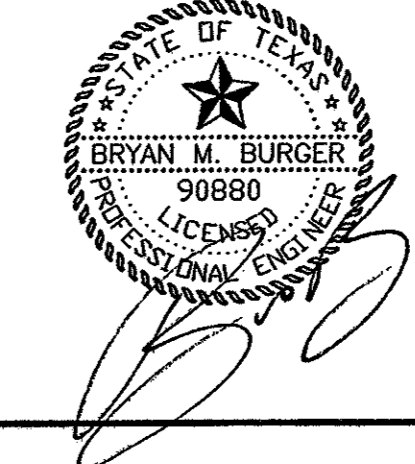
THE ENTRANCE SHALL BE MAINTAINED IN A CONDITION WHICH WILL PREVENT THE TRACKING OR FLOWING OF SEDIMENT ONTO PUBLIC RIGHTS-OF-WAY. THIS MAY REQUIRE PERIODIC TOP DRESSING WITH ADDITIONAL MATERIAL OR ADDITIONAL LENGTH AS CONDITIONS DEMAND AND REPAIR AND/OR CLEANOUT OF ANY MEASURES USED TO TRAP SEDIMENT. ALL SEDIMENT SPILLED, DROPPED WASHED OR TRACKED ONTO PUBLIC RIGHTS-OF-WAY MUST BE REMOVED IMMEDIATELY.



STABILIZED CONSTRUCTION ACCESS DETAIL



THE SEAL APPEARING ON THIS DOCUMENT WAS AUTHORIZED BY BRYAN M. BURGER, P.E. 90880 ON 5/27/09



REV.	DATE	REMARKS

EROSION CONTROL PLAN						
SOUTHTRUST BANK						
BELT LINE - SURVEYOR VILLAGE ADDITION						
TOWN OF ADDISON, TEXAS						
LAWRENCE A. CATES & ASSOC., LLP 14200 MIDWAY ROAD, SUITE 122 (972) 395-2272				CONSULTING ENGINEERS DALLAS, TEXAS		
DESIGN	DRAWN	DATE	SCALE	NOTES	FILE	NO.
BMB	CAC	FEB-04	1"=30'	D.P.	24001 EROS	C-9