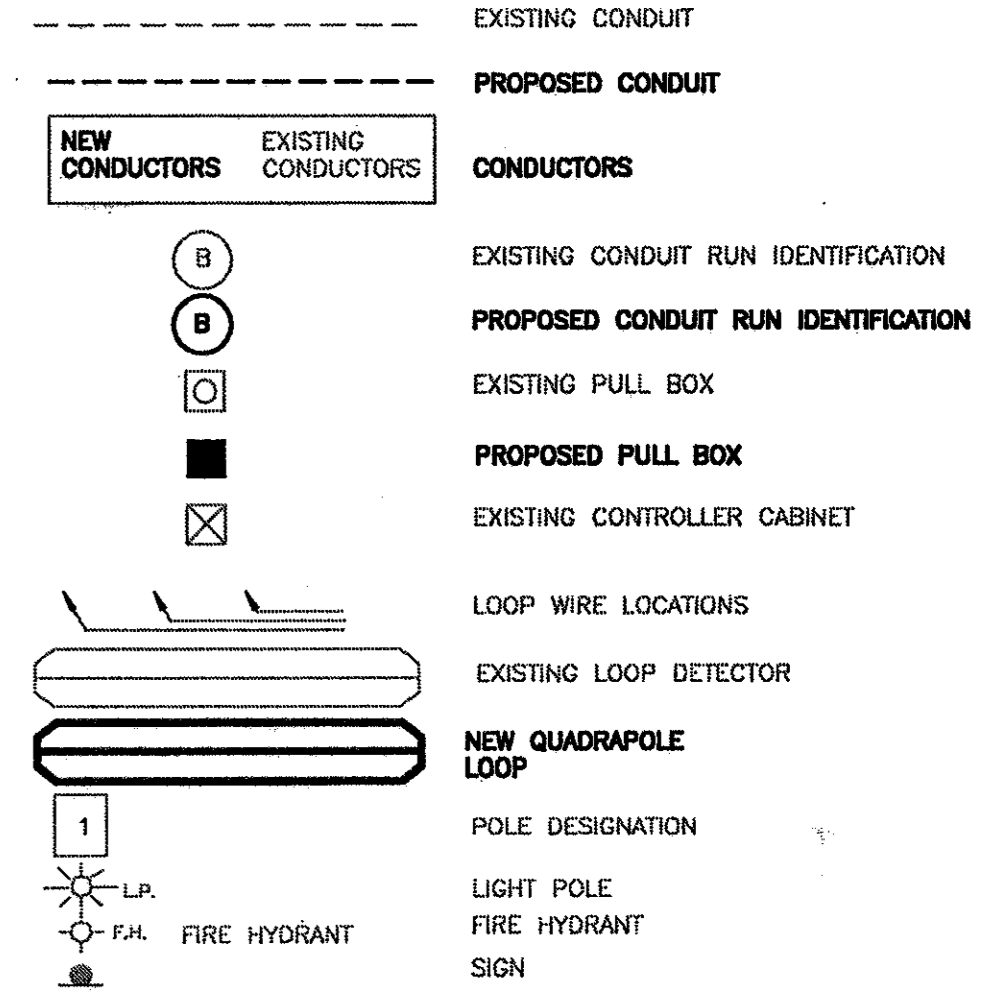
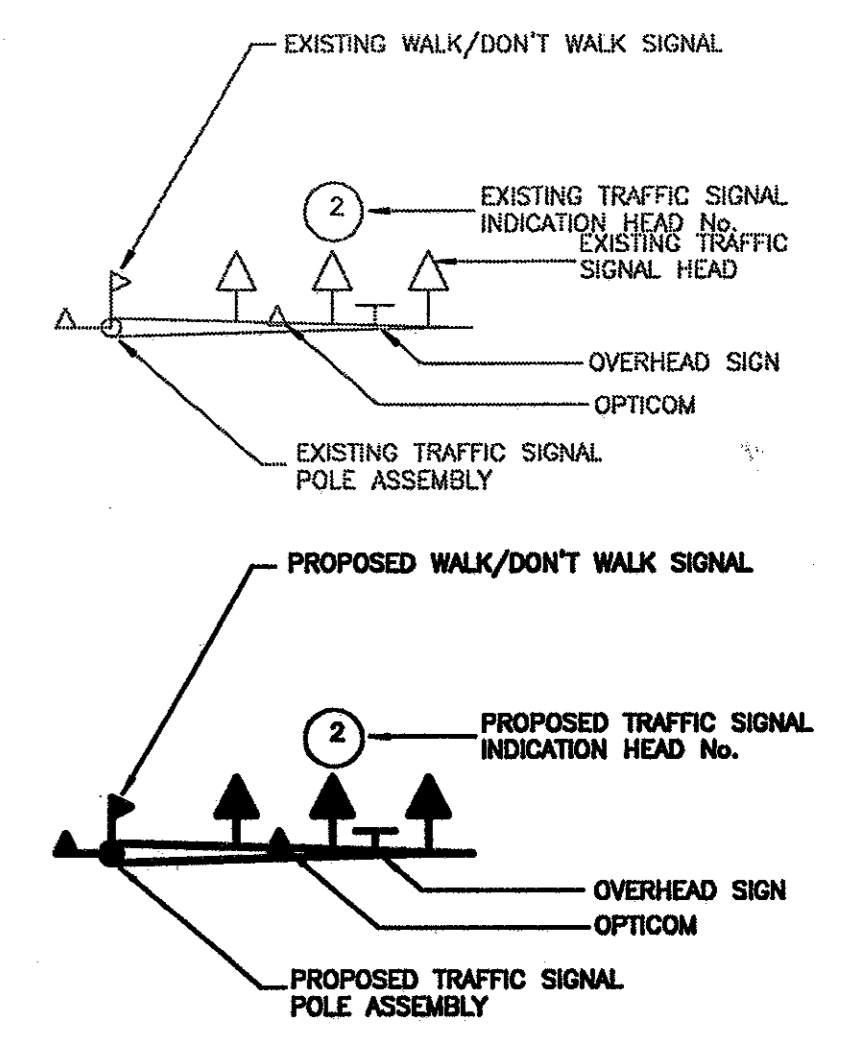


VICINITY MAP



**NOTES:**

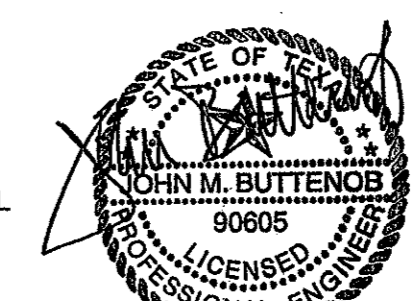
- EXISTING SIGNAL POLE ASSEMBLY INCLUDING SIGNAL HEADS TO BE REMOVED BY CONTRACTOR AND RETURNED TO TOWN OF ADDISON PUBLIC WORKS DEPARTMENT. REMOVE OLD FOUNDATION AND BOLTS TO 24" BELOW FINISHED GRADE.
- NEW SIGNAL POLE ASSEMBLY WILL BE SUPPLIED BY THE CONTRACTOR PER THE TOWN OF ADDISON SPECIFICATIONS AND DETAILS. THE CONTRACTOR WILL BE RESPONSIBLE FOR INSTALLATION OF NEW SIGNAL POLE ASSEMBLY, SIGNAL HEADS, OPTICOM, PEDESTRIAN HEADS AND ILLUMINATED STREET NAME SIGN. POLE SHALL BE LOCATED AS INDICATED ON PLANS. POLE FOUNDATION SHALL BE A TYPE 36-B AS DETAILED AND SPECIFIED ON TEXAS DEPARTMENT OF TRANSPORTATION STANDARD PLAN TS-FD-99. THE MAST ARM SHALL BE 40 FEET IN LENGTH. SIGNAL HEAD NO. 6 SHALL BE LOCATED AT END OF MAST ARM. SIGNAL HEAD NO. 5 SHALL BE LOCATED 15 FEET FROM END OF MAST ARM.
- CONTRACTOR SHALL BE RESPONSIBLE FOR LOCATING EXISTING CONDUIT OF RUN C AND EXTENDING THE CONDUIT TO THE NEW PULLBOX AS SHOWN.
- CONTRACTOR SHALL REMOVE PULL BOX AS INDICATED ON PLANS. NEW PULLBOX TO BE INSTALLED PER TOWN OF ADDISON SPECIFICATIONS AND DETAILS.
- CONTRACTOR SHALL COORDINATE WITH COMCAST AND ONCOR IN ORDER TO RAISE THE OVERHEAD LINES ON THE SOUTH SIDE OF THE INTERSECTION. THE WIRES SHOULD BE RAISED SUCH THAT THEY WILL CLEAR THE PROPOSED MAST ARM BY 30".
- CONTRACTOR SHALL BE RESPONSIBLE FOR READING AND INCORPORATING ALL APPLICABLE TOWN OF ADDISON SPECIFICATIONS FOR THIS JOB.
- REMOVE EXISTING LOOP DETECTORS. NEW LOOP DETECTORS WILL BE SUPPLIED AND INSTALLED BY THE CONTRACTOR PER THE TOWN OF ADDISON SPECIFICATIONS AND DETAILS.
- DUE TO THE ADDITION OF LEFT TURN PHASING FOR NORTHBOUND AND SOUTHBOUND APPROACHES, SIGNAL TIMING MODIFICATIONS WILL BE REQUIRED BY TOWN OF ADDISON'S TRAFFIC ENGINEERING CONSULTANT.
- RELOCATE EXISTING "NO TRUCKS" SIGN (MUTCD R5-2, 24"x24") TO LOCATION AS INDICATED ON PLANS.
- RELOCATE POLE MOUNTED, 3-SECTION SIGNAL HEAD FOR NORTHBOUND APPROACH 15 FEET FROM END OF MAST ARM AS SHOWN FOR SIGNAL HEAD NO. 9. THE CONTRACTOR WILL SUPPLY A FOUR-SECTION SIGNAL HEAD PER TOWN OF ADDISON SPECIFICATIONS AND DETAILS. THE CONTRACTOR WILL BE RESPONSIBLE FOR INSTALLATION OF NEW FOUR-SECTION SIGNAL HEAD NO. 10 ON POLE NO. 4.
- REMOVE POLE MOUNTED, 3-SECTION SIGNAL HEAD NO. 3 AND RETURN TO TOWN OF ADDISON PUBLIC WORKS DEPARTMENT. THE CONTRACTOR WILL SUPPLY A FOUR-SECTION SIGNAL HEAD PER TOWN OF ADDISON SPECIFICATIONS AND DETAILS. THE CONTRACTOR WILL BE RESPONSIBLE FOR INSTALLATION OF NEW FOUR-SECTION SIGNAL HEAD NO. 3 AT END OF MAST ARM ON POLE NO. 1.
- CONTRACTOR SHALL INSTALL LEFT TURN YIELD ON GREEN (MUTCD R10-12, 30"x36") ON POLE NO. 4 BELOW SIGNAL HEAD NO. 10 AND ON POLE NO. 1 NEXT TO SIGNAL HEAD NO. 3.
- CONTRACTOR SHALL INSTALL INTERSECTION LANE CONTROL SIGN (TX MUTCD R3-8B, 36"x30").
- CONTRACTOR SHALL INSTALL NEW CONDUCTORS FROM CONTROLLER CABINET TO NEW POLE NO. 2 AND EXISTING POLE NO. 4 PER THE CONDUIT/CONDUCTOR SCHEDULE.

SIGNAL HEAD ARRAYS			
HEAD NUMBERS	4,5,6	3,10	19,20
LENS SIZE	12"	12"	
TYPE	LED	LED	LED PED.
LENS CONFIGURATION	R	R	DW
	Y	Y	WALK
	G	G	
		Y/G	
TOTAL NUMBER OF UNITS	3	2	2

TABLE ABOVE ONLY SHOWS NEW SIGNAL HEADS

CONDUIT/CONDUCTOR SCHEDULE								
RUN	PVC CONDUIT T-TRENCH B-BORE	18C#12	2C(SH) (DET.)	1C #8 (GRD.)	2C #8 (SIGNS.)	4C#12 (SPARE)	7C#12	OPT CABLE
A	EXIST.	20'	40'	20'	20'	20'	40'	20'
B	EXIST.						70'	
C(EXIST.)	EXIST.	95'	190'	95'	95'			95'
C	2"T -10'	20'	40'	20'	20'			20'
D	2"T -5'	65'		50'	50'			65'
E	EXIST.				60'	60'	60'	
F	EXIST.				70'	70'	70'	
G	EXIST.				50'	50'	50'	
H	EXIST.				50'	50'	20'	
TOTAL	2"T -15'	200'	270'	185'	415'	250'	310'	200'

TABLE ABOVE ONLY SHOWS QUANTITIES OF NEW CONDUCTORS AND CONDUITS



4/21/04



REV.	DATE	REMARKS
<b>TRAFFIC SIGNAL PLAN</b>		
SOUTHTRUST BANK		
BELT LINE - SURVEYOR VILLAGE ADDITION		
TOWN OF ADDISON, TEXAS		
LAWRENCE A. CATES & ASSOC., LLP 14200 MIDWAY ROAD, SUITE 122 (972) 385-2272		CONSULTING ENGINEERS DALLAS, TEXAS
DESIGN	DRAWN	DATE
JMB	KPH	APRIL-04
SCALE	NOTES	FILE
1"=20'	JMB	T-1