

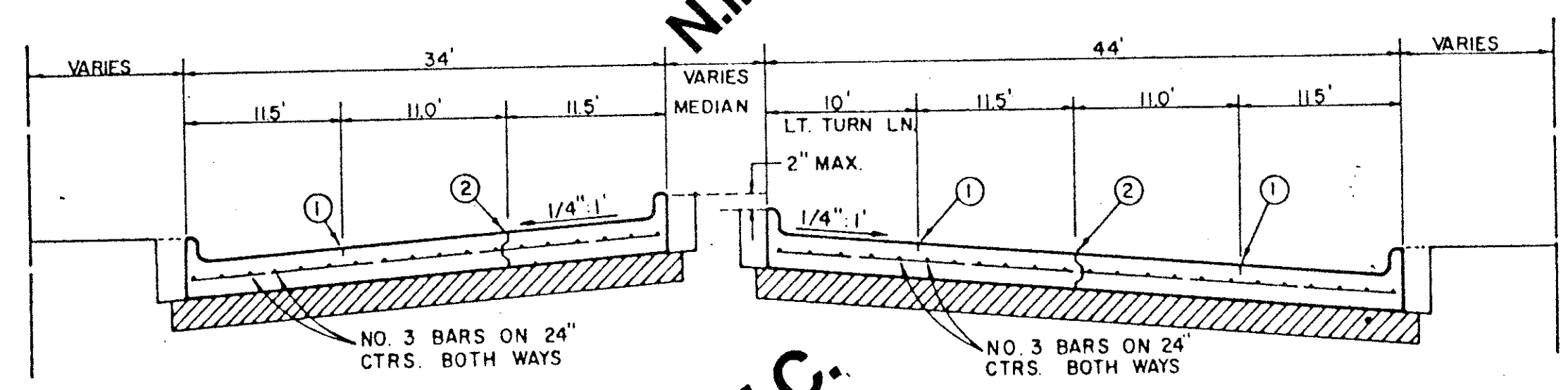
REGULAR SECTION

NOTE: BACKFILL NOT A SEPARATE PAY ITEM, INCIDENTAL TO CONST. MATERIAL ACQUIRED FROM EXCAVATION MAY BE USED IF APPROVED BY ENGR.

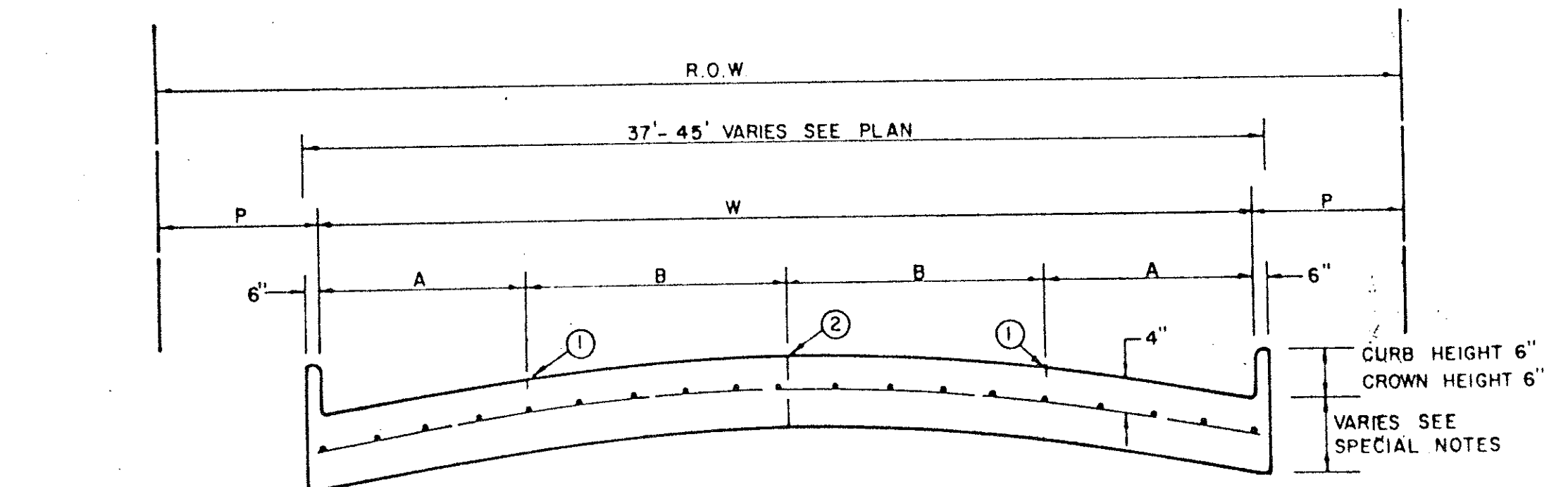
NOTE: ALL TYPICAL NOTES SHOWN THIS DETAIL SHALL APPLY TO ALL DETAILS THIS SHEET UNLESS OTHERWISE INDICATED.

MIN. SLOPE 1/4' / FT
MAX. SLOPE 3' / FT
UNLESS OTHERWISE DIRECTED BY ENGR
TYP. BOTH SIDES

LIMITS OF EXCAVATION
TYP. ALL DETAILS
THIS SHEET



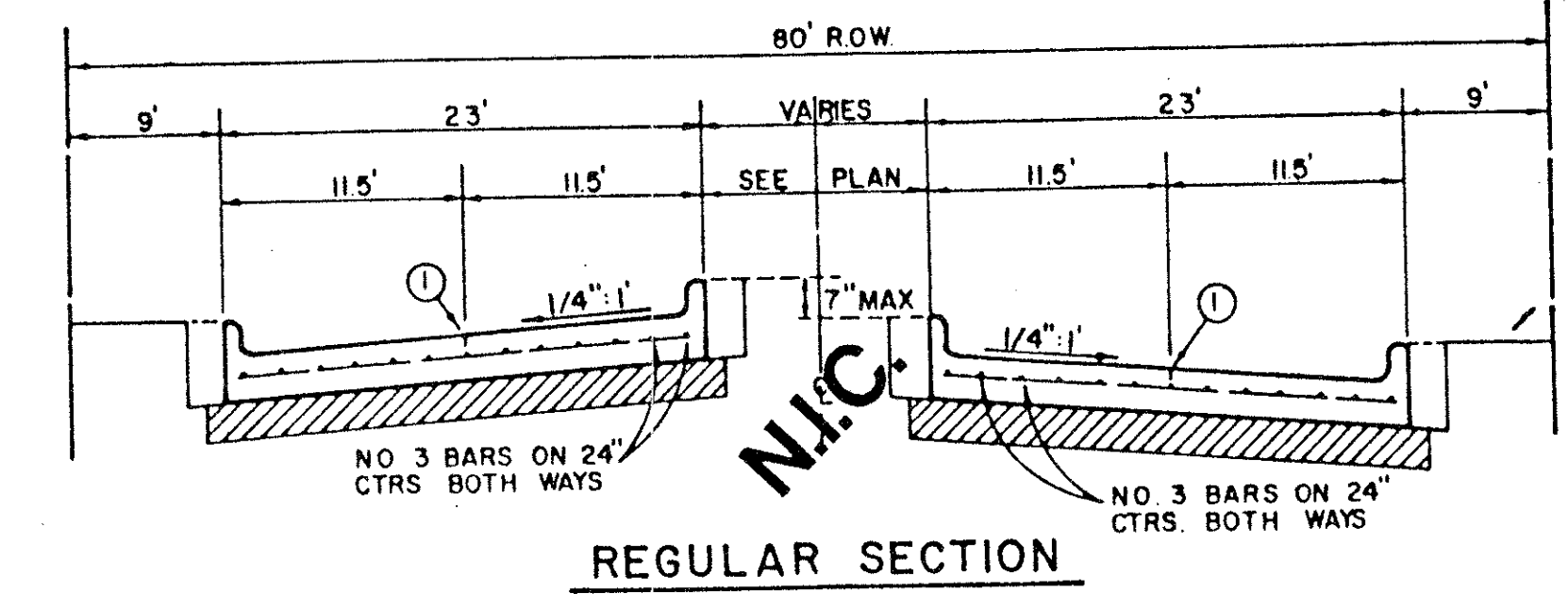
**LEFT TURN SECTION
MAJOR ARTERIAL**



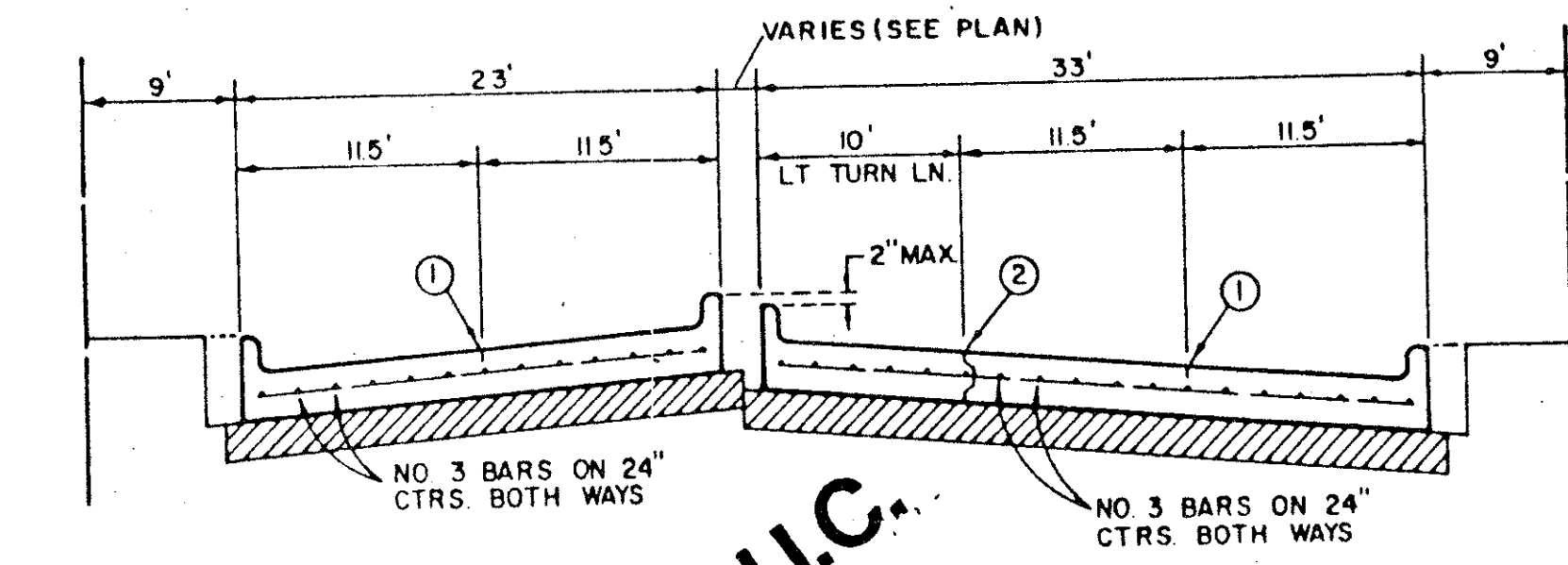
FOUR MOVING LANES OR TWO MOVING LANES / TWO PARKING LANES

STREET TYPE	STREET WIDTH (W)	A	B	ROW WIDTH	P
COLLECTOR	36'	8'	10'	60'	11.5'
COLLECTOR	40'	8' OR 10'	10' OR 12'	60'	9.5'
COLLECTOR	44'	11'	11'	65'	10.0'

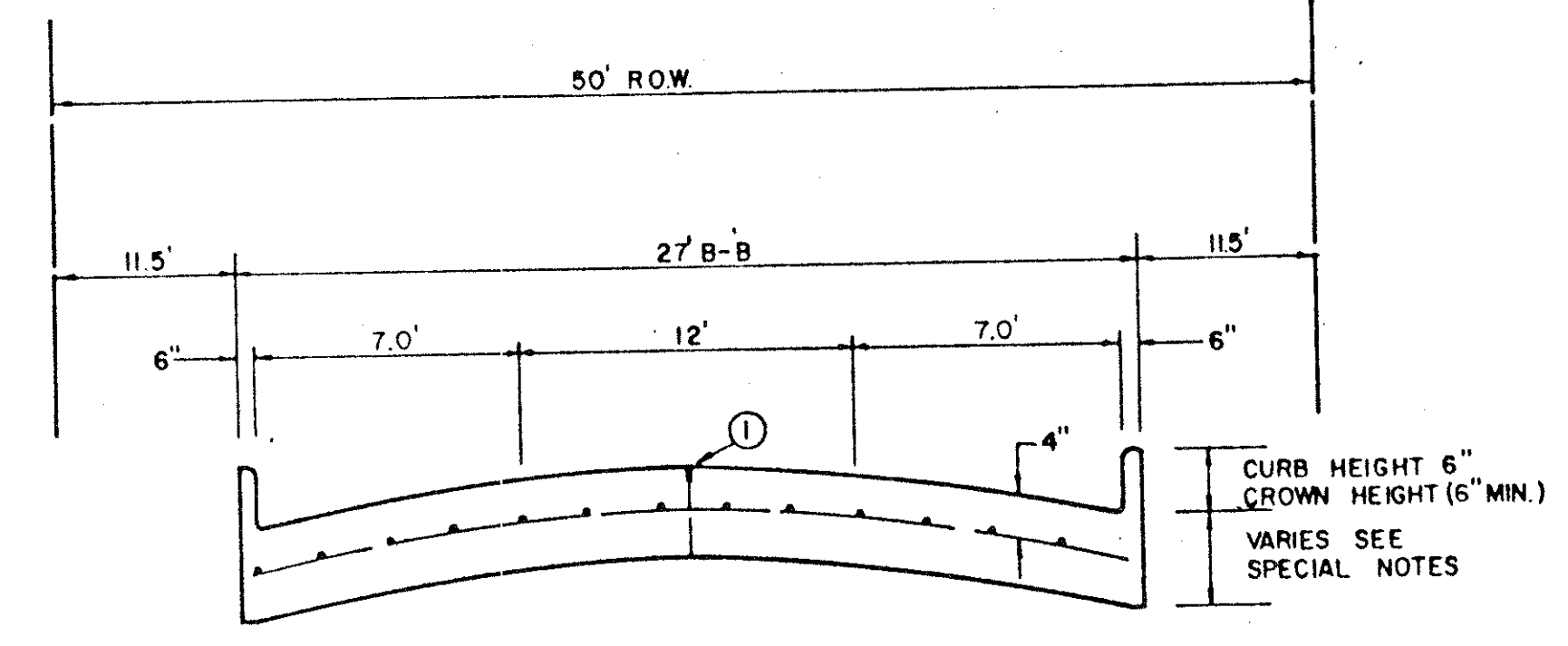
COLLECTOR STREET



REGULAR SECTION

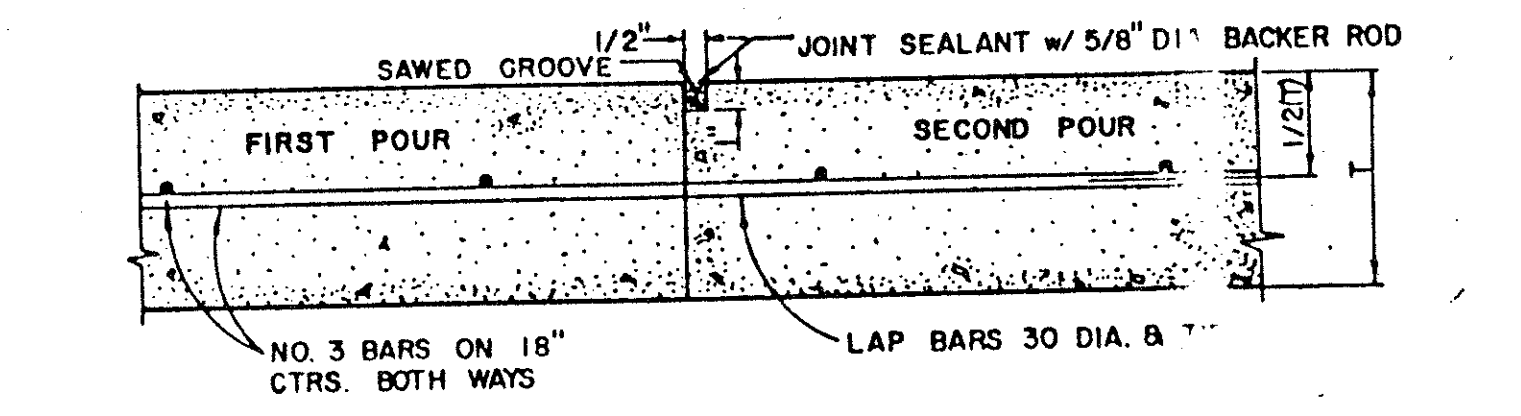
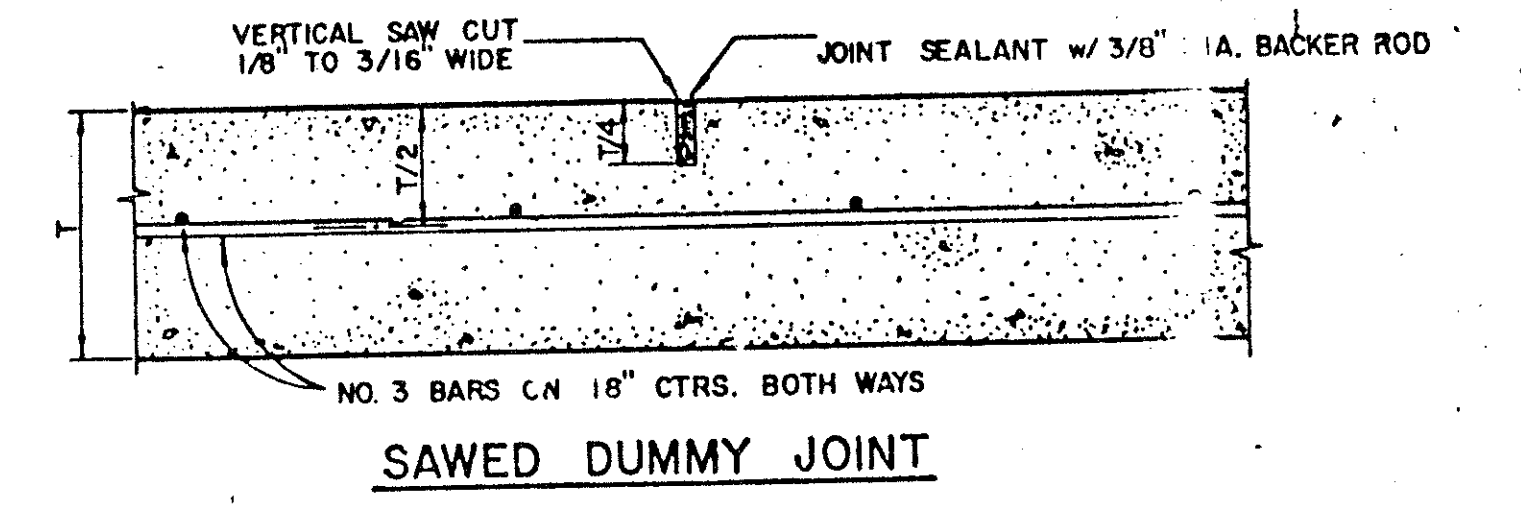


**LEFT TURN SECTION
MINOR ARTERIAL**

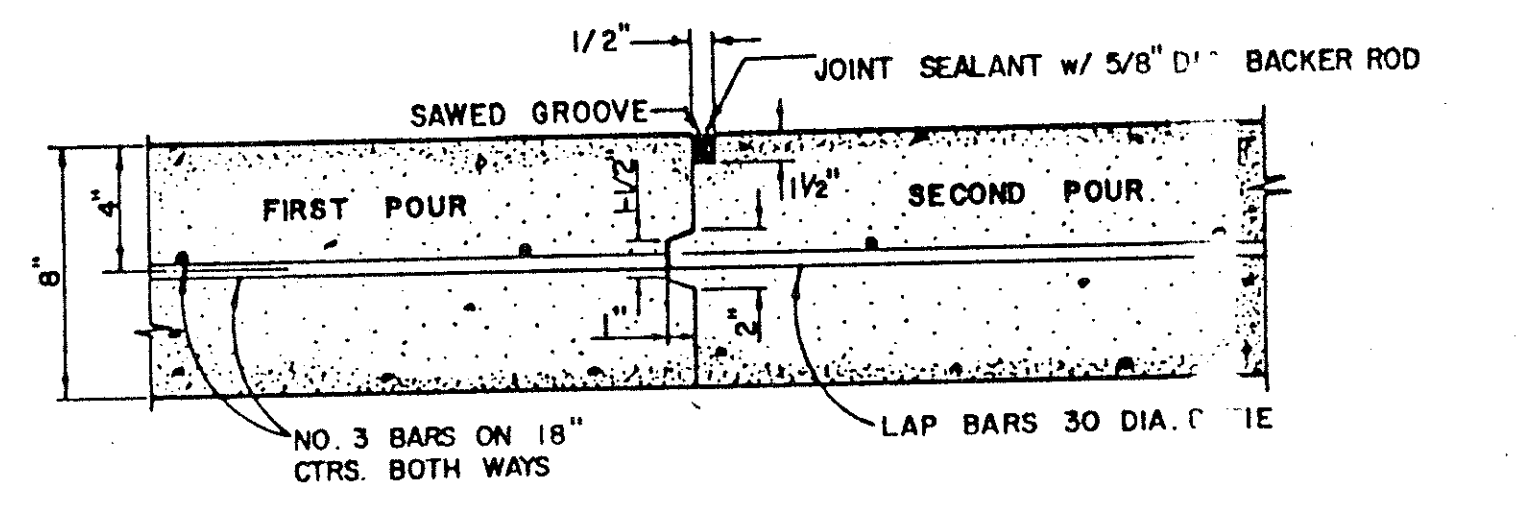


ONE MOVING LANE / TWO PARKING LANES

LOCAL STREET



CONSTRUCTION JOINT FOR 6 INCH PAVEMENT



CONSTRUCTION JOINT FOR 8 INCH PAVEMENT

GENERAL NOTES

- A. GENERAL PAVEMENT THICKNESS FOR STREETS SHALL BE AS SPECIFIED BELOW IN SPECIAL NOTES.
- B. STANDARD SPECIFICATIONS REINFORCED CONCRETE PAVEMENTS
- D. REINFORCED CONCRETE PAVEMENTS
 1. ALL CURBS SHALL BE PLACED INTEGRAL WITH PAVEMENT
 2. CURBS SHALL MEET THE SAME COMPRESSIVE STRENGTH AS SPECIFIED FOR THE CONCRETE PAVEMENT.
 3. DETAIL AND ARRANGEMENT OF JOINTS, ALL TYPES, SHALL BE AS SHOWN ON THE STANDARD CONSTRUCTION DETAILS, OR AS APPROVED BY ENGINEER.
 4. BAR LAPS SHALL BE 30 DIAMETERS.
- C. BAR CHAIRS OR AN APPROVED SUPPORTING DEVICE SHALL BE FURNISHED.

REINFORCED CONCRETE PAVEMENT

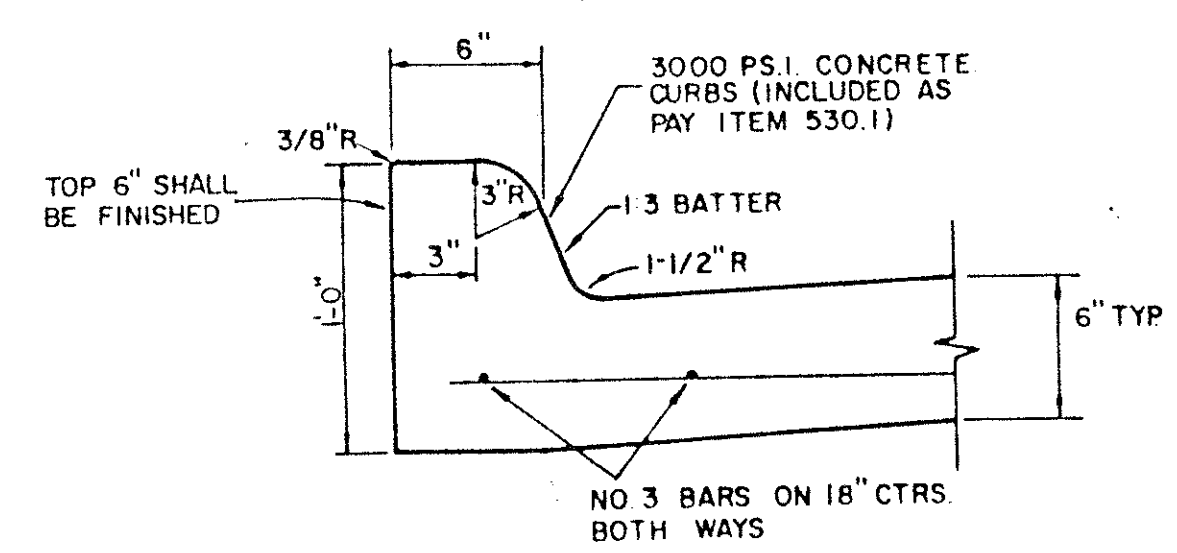
ALL REINFORCING BARS SHALL BE NO. 3 TRANSVERSE BARS TO BE SPACED ON 1'-6" CENTERS; LONGITUDINAL BARS TO BE SPACED ON 1'-6" EXCEPT WHERE NOTED.

UNDIVIDED STREETS-PROVIDE 4" DBL.-REF YELLOW & BUTTON P-H-Y PATTERNS TO BE ESTABLISHED BY ENGINEER. SEE DETAIL SHEET

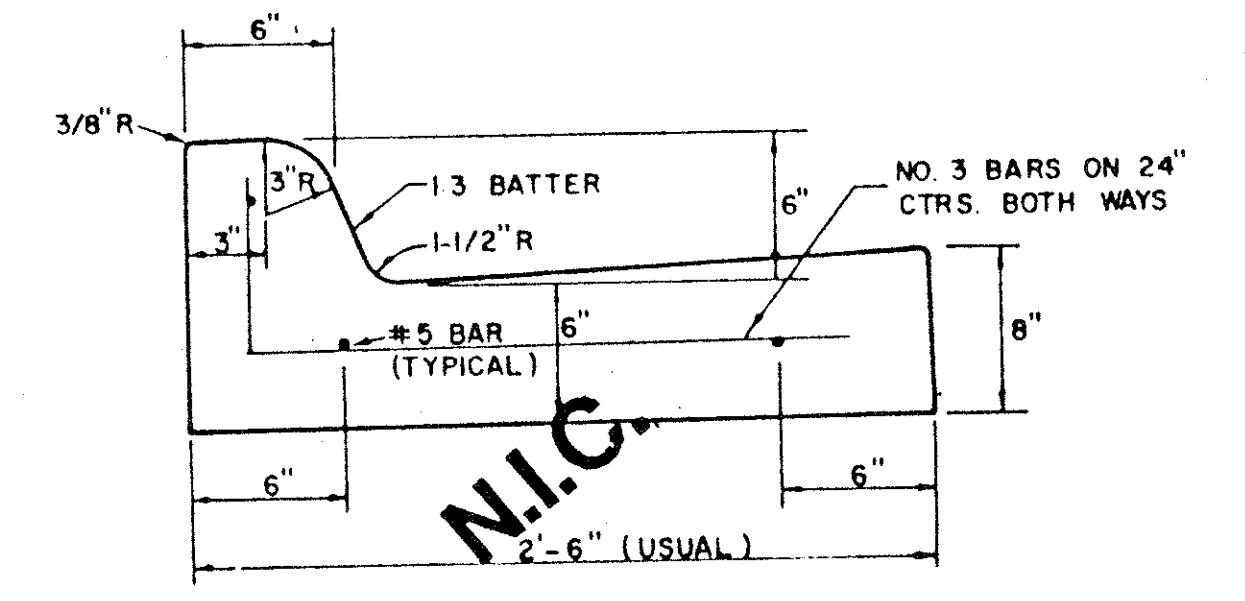
① SAWED LONGITUDINAL DUMMY JOINT.

② CONSTRUCTION JOINT (FULL WIDTH PAVT IS ALLOWED WHERE APPROVED BY ENGINEER.

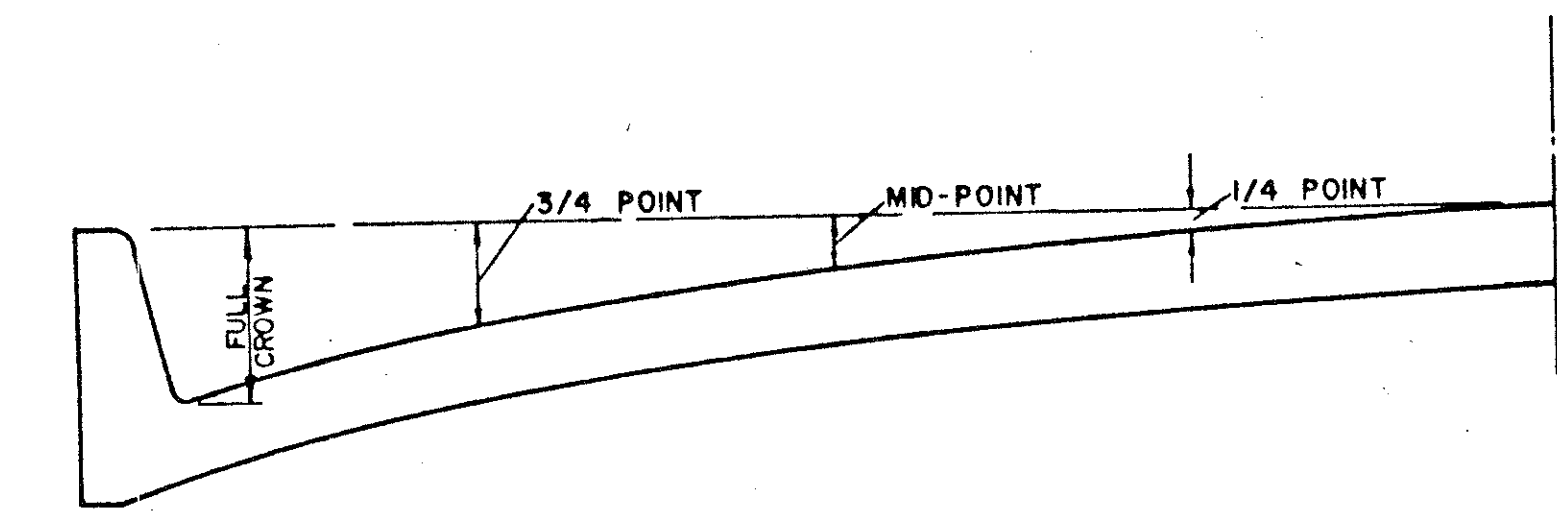
③ FINISH SHALL BE TRANSVERSE WITH TRAFFIC LANES AND SHALL BE STEEL TINED BROOM FINISH.



STANDARD CURB

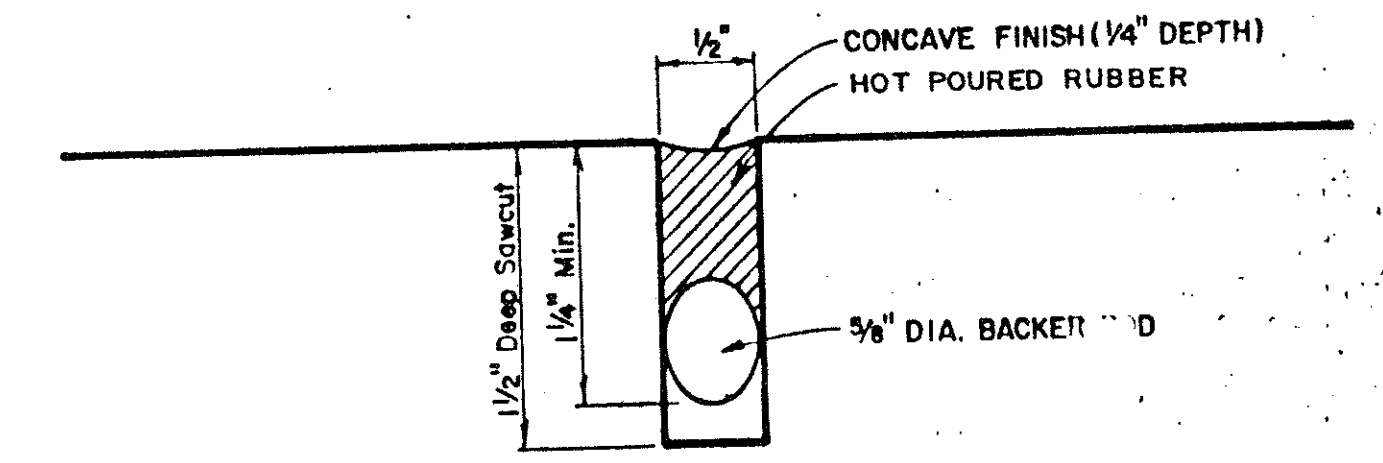


SEPARATE CURB AND GUTTER



ROADWAY WIDTH (W)	TOTAL CROWN HEIGHT	3/4 POINT	MID-POINT	1/4 POINT
26'	6"	3 - 3/8"	1 - 1/2"	3/8"
36'	6"	3 - 3/8"	1 - 1/2"	3/8"
44'	6"	3 - 3/8"	1 - 1/2"	3/8"
48'	6"	3 - 3/8"	1 - 1/2"	3/8"

TABLE OF CROWN HEIGHTS AND ORDINATES FOR VARIOUS PARABOLIC SECTIONS



TYPICAL JOINT DETAIL

TOWN OF ADDISON, TEXAS
DEPARTMENT OF ENGINEERING

**STANDARD CONSTRUCTION DETAILS
PAVING**

STREET CROWNS & JOINTS

Designed -	Drawn -	Date - AUGUST, 1991	Job No. -
Approved -	Checked -	Scale -	Sheet D-1 OF